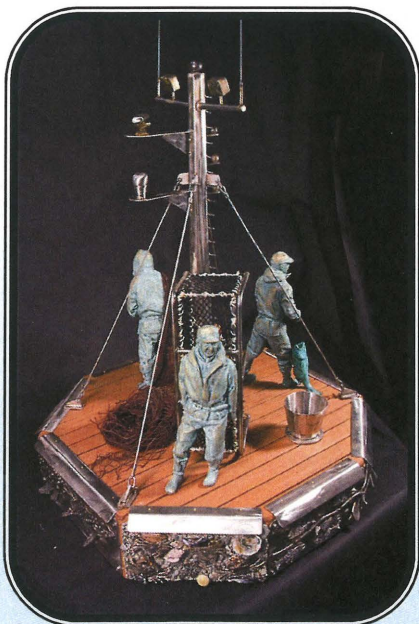
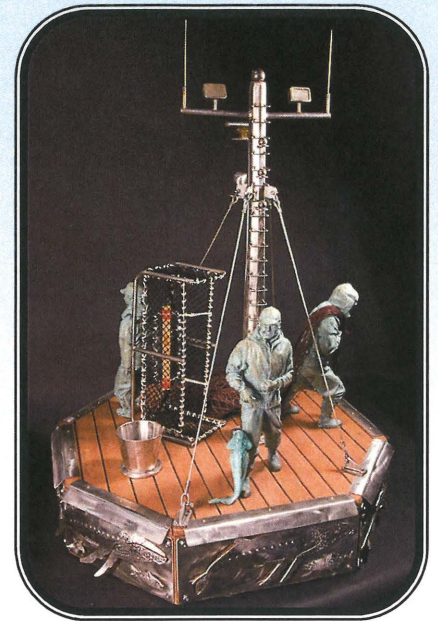


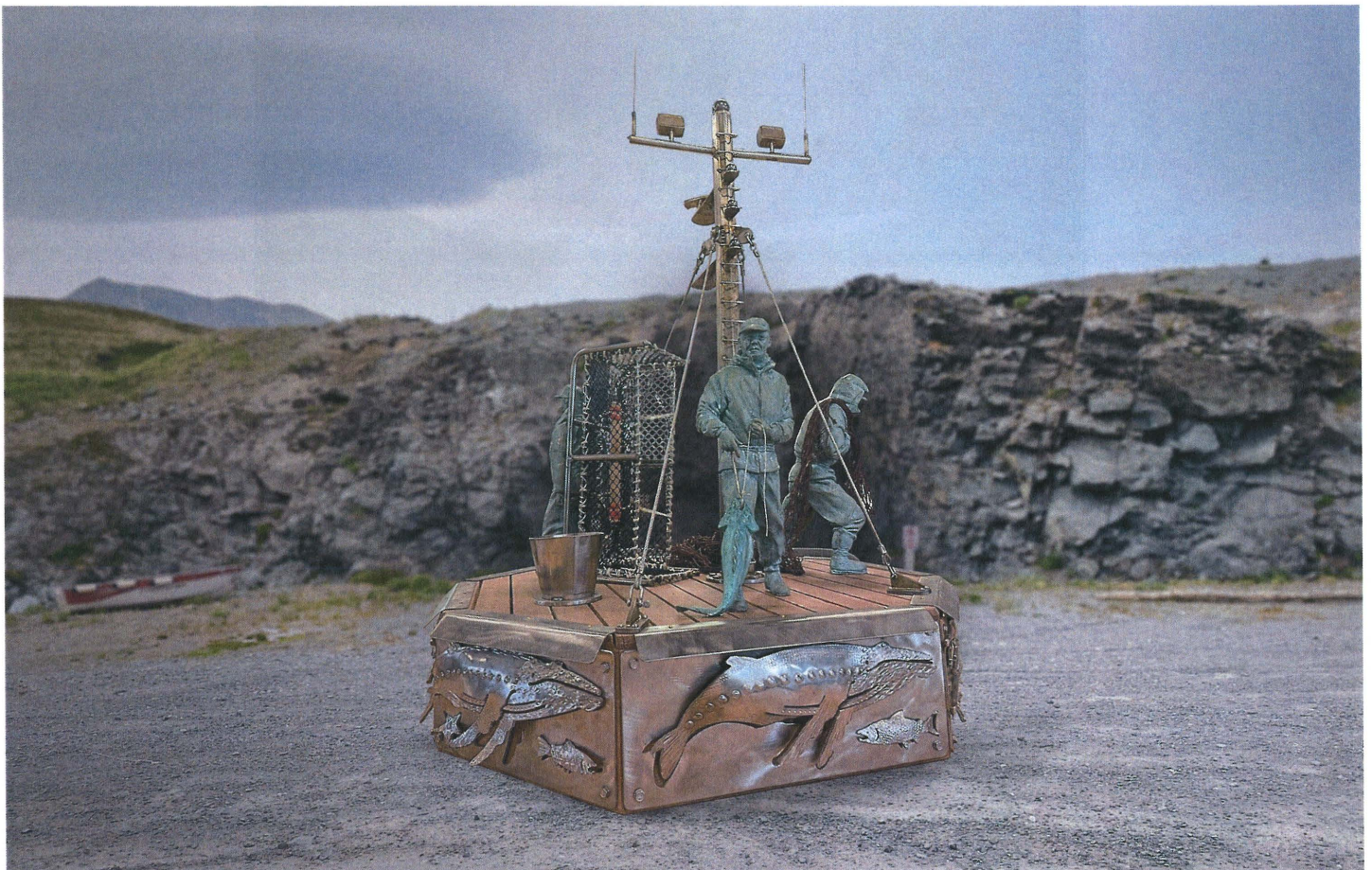
Memorial to the Fishermen of Unalaska



A Proposal by Karel Machalek

Contents

Cover Letter.....	3
Artist's Biography.....	4
Project Overview.....	5
Fundraising.....	6
Scope of Work.....	7
Timeline.....	7



Cover Letter

Karel Machalek
P.O. Box 920605
Dutch Harbor, AK 99692
907-581-4107 / 907-359-7785

August 20, 2021

Mayor and City Council
City of Unalaska
54 Raven Way
Unalaska, AK 99685

RE: Memorial to the Fishermen of Unalaska - Art Installation Proposal

Dear Mr. Mayor and City Council Members:

As a 30+ year resident of Unalaska and local business owner, I've had the pleasure and honor of working alongside many of our local fishermen. Their stories of adventure, strange creatures hauled aboard, and the treacherous seas always kept me spellbound. Sadly, many of our fishermen have been lost at sea doing the work they loved.

Gone but never forgotten, our fishermen live on in legends as well as in the hearts and minds of family and friends still among us. Unlike many fishing communities, Unalaska does not have a memorial to our fishermen. As a tangible and permanent way to commemorate the lives of so many fishermen no longer with us and to honor their contribution to our community, I am proposing to construct a life-sized memorial to be erected on City owned public property at a to-be-determined location here in Unalaska. Potential locations could include Memorial Park or Carl E. Moses Boat Harbor.

Photos on the cover and within this proposal provide a glimpse of the vision for this project. A detailed scale model is available for close-up inspection as well.

Funds are being raised from businesses and individuals to help reach the \$450,000 goal. Your support for this project will demonstrate the City of Unalaska's recognition of fishermen's key role in building and sustaining our community.

Thank you for considering this request to place the memorial on city property and request for a financial contribution to construct this memorial.

Regards,

Karel Machalek

Artist's Biography



Karel Machalek was born in former Czechoslovakia (now the Czech Republic) in 1958 where he learned the welding trade and worked as a welder honing his expertise. Karel immigrated to the United States in 1979 landing in Los Angeles, CA. He moved to Dutch Harbor in 1985 where he took a welding position with Magone Marine, Inc. In 1990 he established his own welding business, Alpha Welding, Inc.

Karel's interest in shape and form led to various artistic endeavors. In 1993 he worked on a collaborative piece with local Unalaska artist Mike Rasmussen. By 2005, Karel's artistic talent led to a year long metal art exhibition at the Museum of the Aleutians.

In 2013, Karel was asked to install 16 stainless steel bollard covers (vertical pipe embedded in the ground to protect electrical transformers, etc.) at the Carl Moses boat harbor. Each bollard cover depicts seafood favorites such as crab, halibut, and salmon.

The large 7,500 pound "Cube Meteor" in front of the Norwegian Rat Saloon was installed by Karel and his brother, Petr, in 2015. Softly glowing and alternating colored LED lights emanate from inside the cube at night.

Also at the Norwegian Rat Saloon, Karel created three metal sculptures that were on display inside the building from 2016—2019.

The metal sculpture entitled "Starving Halibut" in the Grand Aleutian Hotel lobby was constructed by Karel in 2018.

A great sampling of Karel's art can be seen at:

karelmachalekart.com

Project Overview

Visual Representation

This installation will be a life-sized exterior piece representing a long-liner fisherman, a crab fisherman, and a cod fisherman. The base will be 4' high, octagon shaped, constructed of a stainless steel frame with stainless steel sea life figures. The three fishermen will be cast of bronze. The deck will be made of cedar planks simulating the slightly tilted deck of a ship.

The detailed cabling, nets, gaff hook, crab pot, and clothing lend authenticity to the piece. Numerous stainless steel salmon will fill the scene. The mast will have lights and antenna to complete the feel of a ship at work.

The overall dimensions will be 12' tall x 7' diameter at the base. Mounting will be secure to withstand our punishing winds.

Location and Methods of Installation

The proposed location is yet to be determined but some have suggested Memorial Park or Carl E. Moses Boat Harbor would provide an appropriate setting.

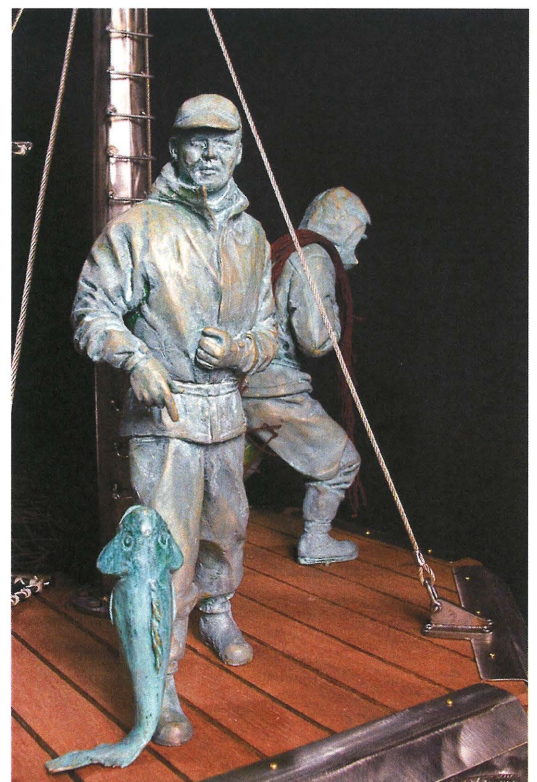
This exterior piece will be constructed of 3/8" mild steel and 1/8" stainless steel, the overall weight will be approximately 1000 pounds and securely anchored in a concrete base flush to the ground.

Care and Maintenance

No maintenance is required. The mild steel will naturally oxidize into a brownish hue while the stainless steel will maintain its light colored appearance. Should storm events cause debris to remain on the installation, simple hosing with water or light brushing will easily restore the piece.

Cost Estimate

\$450,000 all inclusive of materials, labor, and installation.



Fundraising

Materials and Trades

This life-sized installation will require a variety of materials and talent to construct. Mold making, bronze casting, stainless steel fabrication, wood working, and site work are all specialty fields. This is truly a collaborative effort. Detailed work takes hours and hours to accurately coordinate the precise scale of each component to blend seamlessly into a single piece of art. We anticipate that some trades people's time will be provided as in-kind donations, while most will be a project expense.

Businesses

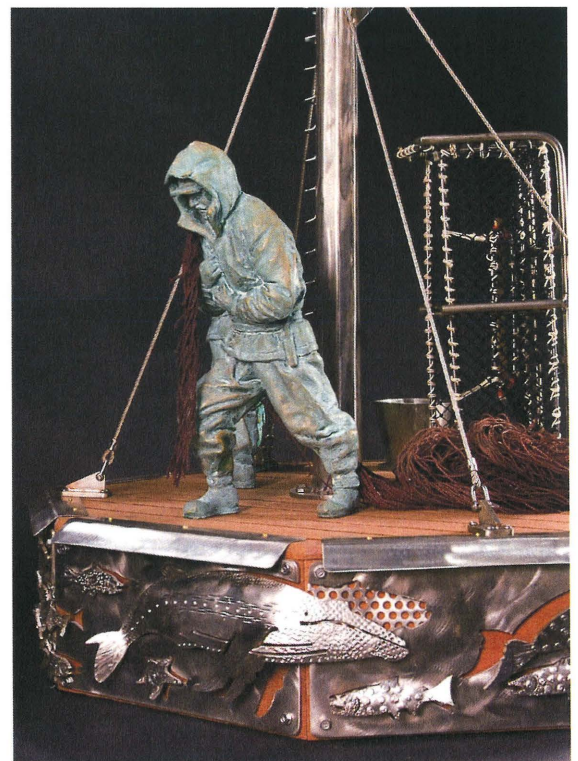
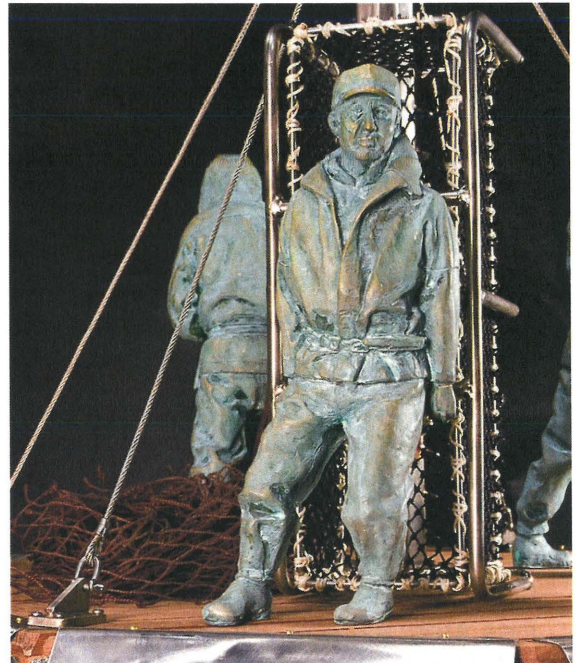
Efforts have already begun to contact local businesses and organizations to garner financial support. Trade unions, fish processors, industry support businesses, and fishing fleets are on the contact list.

Individuals

Participation by residents and non-residents are being sought out.

Trust Account

Key Bank is the agent holding funds for this project. All monies donated will be held in trust for the sole purpose of seeing this project to completion.



Scope of Work

Like most construction projects, this one will begin with the base. Materials will be carefully selected and procured on-island to the largest extent possible. Welding and fabrication will take place in Unalaska. Wood will also be hand selected for optimum grain and durability. As depicted in the photos, stainless steel sea creatures will appear to be swimming around the memorial and visible on all sides. The fishermen will be cast in bronze off-island and shipped to Unalaska. While the bronze is being cast, work on the mast, lights, cabling, crab pot, and finishes will be performed. After the above mentioned work is completed, site work will take place, followed by installation at the location site.

Timeline

Funding is anticipated to take 18 months to secure the full \$450,000.

Base construction will take 4 months.

Sea creature figurines and mounting on the base will take 3 months.

Bronze casting and shipping will take 7 months but will be done simultaneously with base construction and sea creature crafting and mounting.

Mast construction and mounting will take 2 months.

Gaff hook, crab pot, and nets will take 2 months.

Site work and mounting will take 1 month.

In Summary:

Funding 18 months

Construction 12 months

Project (fundraising) kick-off was held August 14, 2021



