

FY22-31 CMMP

# Rolling Stock Replacement Plan

## Table of Contents

	Pages
Rolling Stock Replacement Policy Statement	2
Replacement Plan Summary	3
Replacement Plan 10 Year Look Ahead	4 - 8
Vehicles Going on Surplus Sale	9 - 17

## Rolling Stock Replacement Policy Statement

### Rolling Stock Replacement Policy

The City of Unalaska has a formal, 7 page, written Rolling Stock Replacement Policy. The policy, effective January 1, 2008, establishes the Vehicle Maintenance Chief as the main person responsible for making recommendations to replace and remove vehicles and equipment from our rolling stock fleet.

### Rolling Stock Includes

Vehicles, equipment, trailers, mixers, pumps, generators, etc that move under their own power or are created to be pulled behind a motor-powered vehicle or piece of equipment. It also includes stationary equipment such as generators, air compressors, Landfill baler, welders, tire baler, and pumps. The City presently has 192 pieces in our rolling stock and equipment inventory.

### Rolling Stock Replacement Recommendations

Each fiscal year, the replacement list is initiated by our Vehicle Maintenance Chief based on the results of annual inspections and evaluations and in light of any extraordinary circumstances associated with the specific piece of rolling stock. In addition, when a vehicle reaches the recommended review date, the following criteria are used to determine whether the vehicle warrants replacement.

1. Level of reliability required
2. Historical maintenance and repair costs
3. Current physical conditions
4. Other factors such as safety and regulatory requirements

## FY22 Rolling Stock Replacement Plan Summary

### By Department

As of 02-03-21

Vehicle #	Dept	Primary Driver	Description	Year	Life Cycle	Replace Date	Replace With	Miles	Hours	Description of New Vehicle	Transfer Old Vehicle To	FY22 \$\$\$	Est or Quote
UPD9826	DPS	Chief	4x4 Explorer	2012	7	2019	<b>New</b>			Replaced in FY21 waiting for new to arrive	Finance	-	n/a
CH7413	City Hall	Finance	Red 4x4 Ford Explorer	2003	15	2018	UPD9826			Ford Expedition - Police Chief	City Hall - Floater	-	n/a
CH3710	City Hall	Floater	Blue Ford Ranger PU	1996	15	2011	CH7413	49,694		Red Ford Explorer	Surplus Sale	-	n/a
New	DPS	Patrol	New to Fleet	-	-	-	<b>New</b>	-		4x4 Chevy Tahoe	n/a	\$ 65,000	Est
New	DPS	Evidence	New to Fleet	2000	15	2015	N/A	-		White Ford Van from Impound	n/a	-	n/a
UPD5563	DPS	Patrol	4x4 Ford Expedition	2014	7	2021	<b>New</b>			4x4 Chevy Tahoe	PCR Floater	\$ 56,534	Quote
New	DPS	DPS/Fire	New to Fleet	-	-	-	<b>New</b>	-		Pisten Bully w/Trailer	n/a	\$ 429,000	Quote
New	UFD	Fire	New to Fleet	-	-	-	<b>New</b>	-		4x4 Chevy 2500 Crewcab	n/a	\$ 55,000	Est
PW1992	DPW	Roads	4x2 F250 Flatbed	1995	15	2010	<b>New</b>			4x4, Chevy Rollback Car Hauler	Surplus Sale	\$ 123,249	Quote
PW6372	DPW	Roads	4x4 F350 Flatbed w/plow	2003	15	2018	<b>New</b>	43,291		4x4 Chevy Silverado 1-Ton	Surplus Sale	\$ 75,000	Est
DT7	DPW	Roads	Volvo 12 CY Dump Truck	1996	18	2014	<b>New</b>			Sterling 12 CY Dump Truck	Surplus Sale	\$ 143,398	Quote
HS1	DPW	Roads	Hydro-Seeder/Mulcher	1997	20	2017	DNR			DNR - Hire Locally	Surplus Sale	-	n/a
L1	DPW	Roads	IT28G CAT Loader	2001	18	2019	<b>New</b>			CAT 930 Loader	Landfill	\$ 250,246	Quote
L4	DPU	Landfill	IT28B CAT Loader	1991	18	2009	L1			IT28G CAT Loader	Surplus Sale	-	n/a
LF1	DPU	Landfill	L20B-P Volvo Loader	2007	18	2025	<b>New</b>	-		908 CAT Loader	Surplus Sale	\$ 131,552	Quote
E1214	DPU	Line Crew	Ford F800 Crane Truck	1986	20	2006	<b>New</b>	-		2 TON Chevy Crane Truck	Surplus Sale	\$ 241,962	Quote
New	Ports	Ports	New to Fleet	-	-	-	<b>New</b>	-		908 CAT Loader	n/a	\$ 125,652	Quote
New	DPU	WW	New to Fleet	-	-	-	<b>New</b>	-		150 KVA Backup Genset - Lift Stations	n/a	\$ 89,680	Quote
New	DPU	W	Kato Backup Genset	1994	20	2014	<b>New</b>	-		100 KVA Backup Genset - Water Wells	Surplus Sale	\$ 77,369	Quote

**TOTAL** **\$ 1,863,643**

### By Fund

<b>GENERAL FUND</b>	\$ 1,197,428
<b>ELECTRIC FUND</b>	\$ 241,962
<b>WATER FUND</b>	\$ 77,369
<b>WASTEWATER FUND</b>	\$ 89,680
<b>SOLID WASTE FUND</b>	\$ 131,552
<b>PORTS / HARBOR FUND</b>	\$ 125,652

**TOTAL** **\$ 1,863,643**

FY22-31 Rolling Stock and Equipment Replacement Plan

10 Year Look-Ahead

**LEGEND:**

Salmon = General Fund
Pink = Electric Fund
Green = Solid Waste Fund
Blue = Ports Fund
Ivory = Wastewater Fund
Purple = Water Fund
White = FY22 Proposed New to Fleet
Yellow = FY22 Replacements

**Abbreviations:**

Department of Public Works	DPW	Department of Public Utilities	DPU	City Hall	CH	Department of Public Safety	DPS
Engineering	E	Water	W	City Manager	CM	Police	UPD
Roads	Roads	Wastewater	WW	Assistant City Manager	ACM	Fire/EMS	UFD
Facilities Maintenance	FM	Line Crew	LC	Clerks	C	Animal Control Officer	ACO
Supply	S	Powerhouse	P	Planning	Plan	PCR	PCR
Vehicle/Equipment Maintenance	VM	Solid Waste/Landfill	LDF	Finance	Fin	Ports	Port
Director	DIR	Floater	Float	Information Systems	IS	Do Not Replace	DNR
Deputy Director	DEP						

Vehicle #	Class	Primary User	Make	Function / Description	Year	Life Cycle	Replace Date	FY22 Replace Priority	Miles	Replace With	Transfer To	Hrs	2020	2021	2022	2023	2024	2025	2026	2027	2028	2029	2030	2031
CH3710	GP	CH-Float	Ford	4x4, Blue Ranger w/ Topper	1996	15	2011	1	36,495	CH7413	Surplus Sale				\$0									
E1214	HE	P	Ford	Crane Truck	1986	20	2006	2		New	Surplus Sale	1,294			\$241,962									
HS1	EQ	Roads	Hydro-Mulcher	Hydro-seeder on wheels	1997	15	2012	3		DNR	Surplus Sale				\$0			\$100,000						
L4	HE	LDF	CAT	Loader, IT28	1991	18	2009	4		L1	Surplus Sale	17,949			\$0									
PW1992	GP	Roads	Ford	F250 Flatbed 2WD Q-Tribe	1995	15	2010	5		New	Surplus Sale				\$123,249									
DT7	HE	Roads	Autocar/Volvo	Dump Truck	1996	18	2014	6		New	Surplus Sale	14,468			\$143,398									
GS13	EQ	W	Kato/John Deere	Gen Set - Well House #1 by DPW	2000	20	2020	7		New	Surplus Sale				\$77,369									
PW6372	GP	Roads	Ford	F350 Flatbed plow-salt spreader	2008	15	2023	8	24,467	New	Surplus Sale				\$75,000									
LF1	HE	LDF	Volvo	Loader	2007	18	2025	9		New	Surplus Sale	10,177			\$131,552					\$250,000				
CH7413	GP	Fin	Ford	4x4 Explorer - Red	2003	15	2018	10		UPD9826	CH Floater				\$0									
L1	HE	Roads	CAT	Loader, IT28	2001	18	2019	11		New	LDF	11,293			\$250,246									
UPD5563	GP	DPS	Ford	4x4 Expedition	2014	7	2021	12		New	PCR/Float				\$56,534									
n/a	GP	DPS	Chevrolet	4x4 Tahoe	Proposed New to Fleet				13						\$65,000									
n/a	GP	DPS	Ford	White Van in DPW Impound Lot	Proposed New to Fleet				14						\$0									
n/a	EQ	WW	Generac	Trailer mounted genset 150KVA	Proposed New to Fleet				15						\$89,680									
n/a	EQ	DPS	Pisten Bully	Tracked Rescue Unit	Proposed New to Fleet				17						\$390,000									
n/a	EQ	UFD	Chevrolet	4x4 2500 Crewcab Pickp	Proposed New to Fleet				18						\$55,000									
n/a	EQ	Ports	CAT	908 Loader	Proposed New to Fleet				19						\$125,652									
PUMPS780	EQ	UFD	Darley	Fire Pump - Trailer Mounted	1992	15	2007	20				620			\$50,000									
GW1	EQ	VM	Miller	Welder	1992	15	2007	21							\$25,000									
FL2	EQ	VM	Hyster	Forklift - Electric	1988	20	2008	22							\$80,000									
CL1	EQ	W	John Deere	Generator	1988	20	2008	23							\$65,000									
BD5	HE	Roads	CAT	D7 Dozer	1989	20	2009	24				8,660										\$400,000		
PW5954	HE	S	Ford	F700 4x4, Flatbed	1996	15	2011	25	6,321							\$65,000								
AC2	EQ	Roads	Ingersol Rand	Air Compressor - Portable	1994	20	2014	26				806					\$20,000							
PW8586	GP	VM	Ford	F350 4x4 Flatbed w/air compress	1996	15	2011	27	21,364	E5629	Surplus Sale				\$60,000									
AC3	EQ	LC	Ingersol Rand	Air Compressor - Portable	1994	20	2014	28				390									\$20,000			
TR2	EQ	FM	Trailmax	Trailer (Scissor lift)	1992	20	2012	29									\$50,000							
AC4	EQ	VM	Ingersol Rand	Air Compressor	1994	20	2014	30								\$35,000								
S3	EQ	Roads	Swenson	Gravel / Salt Spreader 12ft	1997	15	2012	31																
BH1	HE	LC	Case	590 Backhoe 4X4	2000	15	2015	32				2,635						\$250,000						
DT6	HE	Roads	GMC/Volvo	Dump Truck	1994	18	2012	33				11,072				\$150,000								
UFD0592	HE	UFD	Pierce	Fire Engine #2	1997	18	2015	34													\$1,000,000			
ST1	HE	Roads	Autocar/Volvo	Sand Truck Dump Truck	1998	15	2013	35				7,947												
WT2	HE	Roads	Autocar/Volvo	Water Tanker 4000 gal	1996	20	2016	36				6,993				\$100,000								
BH2	HE	WW	Case	580 Backhoe 4X4	1999	15	2014	37								\$150,000								
HB1	EQ	Roads		Asphalt Hot Box	2001	15	2016	38									\$150,000							
SS1	HE	Roads	International	Elgin Street Sweeper Crosswind J	2002	15	2017	39				1,491							\$300,000					
PW9623	GP	Eng	Ford	4x4 Explorer	2002	15	2017	40																
TR21	EQ	Roads	A-1 Welding	Shoring Trailer	1997	20	2017	41																
E6	HE	LC	Autocar/Volvo	Boom Truck	1997	20	2017	42				2,930				\$100,000								
LF6065	GP	LDF	Ford	F250 Pickup 4x4	2003	15	2018	43																
TR8	EQ	UFD	Foster Rescue	Trailer - Rescue-SCBA Refill	2005	13	2018	44																

FY22-31 Rolling Stock and Equipment Replacement Plan

10 Year Look-Ahead

LEGEND:

- Salmon = General Fund
- Pink = Electric Fund
- Green = Solid Waste Fund
- Blue = Ports Fund
- Ivory = Wastewater Fund
- Purple = Water Fund
- White = FY22 Proposed New to Fleet
- Yellow = FY22 Replacements

Abbreviations:			
Department of Public Works	DPW	Department of Public Utilities	DPU
Engineering	E	Water	W
Roads	Roads	Wastewater	WW
Facilities Maintenance	FM	Line Crew	LC
Supply	S	Powerhouse	P
Vehicle/Equipment Maintenance	VM	Solid Waste/Landfill	LDF
Director	DIR	Floater	Float
Deputy Director	DEP		
		City Hall	CH
		City Manager	CM
		Assistant City Manage	ACM
		Clerks	C
		Planning	Plan
		Finance	Fin
		Information Systems	IS
		Department of Public Safety	DPS
		Police	UPD
		Fire/EMS	UFD
		Animal Control Officer	ACO
		PCR	PCR
		Ports	Port
		Do Not Replace	DNR

Vehicle #	Class	Primary User	Make	Function / Description	Year	Life Cycle	Replace Date	FY22 Replace Priority	Miles	Replace With	Transfer To	Hrs	2020	2021	2022	2023	2024	2025	2026	2027	2028	2029	2030	2031
VT2	HE	WW	Volvo	Vactor Truck	1998	20	2018	45				7,346												
LF0750	HE	LDF	Ford	F-750 Flatbed with Lift	2003	15	2018	46	9,326								\$80,000							
PS1	EQ	Roads	Graco	Road Lazer - Strip Painter	2003	15	2018	47																
PW4751	HE	S	Ford	Flatbed F550 with Box	2004	15	2019	48	54,381								\$80,000							
GM2	EQ	FM	Toro	Riding Lawn Mower	2009	10	2019	49								\$20,000								
GS18	EQ	DPS	Generac	Stationary Backup Generator	1999	20	2019	50																
PS2	EQ	Roads	Ethyre	Asphalt Distributor	2004	15	2019	51																
BD6	HE	Roads	CAT	D4 Dozer	1992	20	2012	52				5,662									\$350,000			
AC1	EQ	VM	Ingersol Rand	Air Compressor in DPW	1999	20	2019	53				23,622				\$35,000								
BD7	HE	LC	CAT	D3 Dozer	1996	20	2016	54				1,075									\$350,000			
PW0688	GP	VM	Ford	4x4, Pickup Super Cab	2003	15	2019	55	40,871															
TR17	EQ	LC	Trail King	Utility Trailer	1995	20	2015	56									\$50,000							
BH3	HE	Roads	CAT	307C Mini Excavator	2005	15	2020	57				4,684										\$200,000		
TR18	EQ	FM	Big Tex	Utility Trailer	1995	20	2015	58																
CH4087	GP	ACM	Ford	4x4, Explorer	2005	15	2020	59	41,940							\$35,000								
BD8	HE	LDF	CAT	D6 Dozer	1996	20	2016	60				3,872									\$350,000			
CH7954	GP	C	Ford	4x4 Explorer - Red	2005	15	2020	61								\$35,000								
T2	HE	Roads	Autocar/Volvo	Tractor, 5th Wheel	1998	20	2018	62				2,828					\$100,000							
DT2	HE	Roads	GMC/Volvo	Dump Truck w/ Plow/Salt Spreader	2000	18	2018	63				10,132				\$100,000								
GS15	EQ	WW	Northern Lights	Gen Set - Diesel - On Trailer	2000	20	2020	64																
GS17	EQ	WW	Onan	Gen Set - Inside plant	2000	20	2020	65																
SP1	EQ	WW	Pioneer Prime	Trailer Mounted Diesel Pump	2005	15	2020	66																
UPD8407	GP	DPS/ACO	Ford	4x4, Explorer	2005	15	2020	66						\$0										
PW4572	GP	FM	GMC	One Ton Service Truck	2006	15	2021	67	34,909								\$60,000							
CC2	HE	Roads	CAT	Compactor	2001	20	2021	68				876										\$250,000		
HM9290	GP	Ports-DIR	Ford	4x4, Explorer XLT	2007	15	2022	69	54,898															
UPD5565	GP	DPS	Ford	4x4 Expedition	2015	7	2022	70								\$45,000								
S2878	HE	VM	GMC	C5500 Service Truck	2007	15	2022	71																
RG2	HE	Roads	CAT	Grader 14H	2004	18	2022	72				12,977										\$600,000		
HML1	HE	Ports	CAT	90B Loader	2004	18	2022	73				5,606				\$250,000								
CH9633	GP	Plan	Ford	4x4, Explorer	2008	15	2023	74	98,779								\$35,000							
L3	HE	Roads	CAT	Loader, 902 small	2005	18	2023	75				2,244					\$150,000							
UFD3535	HE	UFD	Kenworth	Pumper/Tender #3	2005	18	2023	76									\$250,000							
DPU9546	GP	DPU-DEP	Ford	4x4 Explorer	2008	15	2023	77									\$35,000							
UFD6859	GP	UFD	Ford	F350 Ambulance	2016	7	2023	78																
UPD9114	GP	DPS	Ford	4x4, Expedition	2016	7	2023	79									\$45,000							
W7587	GP	W	Ford	F150 4x4	2008	15	2023	80									\$40,000							
FL4	HE	Ports	Manitou	Forklift	2003	20	2023	81				586					\$75,000							
BH10	HE	Roads	Volvo	210 Excavator	2009	15	2024	82				1,869					\$500,000							
FL5	EQ	S	Manitou	Forklift	2004	20	2024	83				868					\$75,000							
ML4	EQ	P	Genie	JLG Electric Man Lift	2009	15	2024	84									\$40,000							
TR4	EQ	Roads	Load King	Lowboy Equipment Trailer	2004	20	2024	85														\$65,000		
TR7	EQ	UFD	Wells Fargo	Trailer - HAZMAT	2004	20	2024	86										\$35,000						

FY22-31 Rolling Stock and Equipment Replacement Plan

10 Year Look-Ahead

LEGEND:

- Salmon = General Fund
- Pink = Electric Fund
- Green = Solid Waste Fund
- Blue = Ports Fund
- Ivory = Wastewater Fund
- Purple = Water Fund
- White = FY22 Proposed New to Fleet
- Yellow = FY22 Replacements

Abbreviations:

Department of Public Works	DPW	Department of Public Utilities	DPU	City Hall	CH	Department of Public Safety	DPS
Engineering	E	Water	W	City Manager	CM	Police	UPD
Roads	Roads	Wastewater	WW	Assistant City Manage	ACM	Fire/EMS	UFD
Facilities Maintenance	FM	Line Crew	LC	Clerks	C	Animal Control Officer	ACO
Supply	S	Powerhouse	P	Planning	Plan	PCR	PCR
Vehicle/Equipment Maintenance	VM	Solid Waste/Landfill	LDF	Finance	Fin	Ports	Port
Director	DIR	Floater	Float	Information Systems	IS	Do Not Replace	DNR
Deputy Director	DEP						

Vehicle #	Class	Primary User	Make	Function / Description	Year	Life Cycle	Replace Date	FY22 Replace Priority	Miles	Replace With	Transfer To	Hrs	2020	2021	2022	2023	2024	2025	2026	2027	2028	2029	2030	2031
UPD1438	GP	DPS	Ford	4x4 Expedition	2017	7	2024	87									\$45,000							
UPD2891	GP	DPS	Ford	4x4 Expedition	2017	7	2024	88									\$45,000							
UPD4552	GP	DPS	Ford	4x4 Explorer	2017	7	2024	89									\$45,000							
UPD7430	GP	DPS	Ford	4x4, Expedition	2017	7	2024	90									\$45,000							
UPD5150	GP	DPS	Ford	4x4 Expedition	2017	7	2024	91									\$45,000							
UPD5153	GP	DPS	Ford	4x4 Expedition	2017	7	2024	92									\$45,000							
PW4397	GP	FM	Ford	4x4, Pickup Super Cab	2009	15	2024	93	30,041								\$50,000							
L9	HE	Roads	Volvo	Loader	2007	18	2025	94				8,430						\$300,000						
PW1765	GP	FM	Ford	Flatbed, F350 salt bin	2010	15	2025	95	19,901									\$50,000						
UFD3503	GP	UFD	Ford	Ambulance North Star Box	2012	13	2025	96										\$250,000						
HM2	EQ	Ports	Almar	Rescue Boat 34.6'	2005	20	2025	97										\$300,000						
TR9	EQ	Ports	EZLoad	Trailer (HM2 Rescue Boat)	2005	20	2025	98										\$65,000						
HM3672	GP	Ports	Ford	4x4 Expedition XLT	2010	15	2025	99		COP								\$0						
SB2	EQ	Roads	Snocrete	Snow Blower fits IT28	2000	25	2025	100				503						\$45,000						
WSM3	EQ	W	Ski Doo	Snow Machine	2010	15	2025	101										\$20,000						
TR19	EQ	W	Snow Sport	Trailer for Snow Machines	1995	20	2015	102										\$50,000						
WSM4	EQ	W	Ski Doo	Snow Machine	2010	15	2025	102										\$20,000						
HM8025	GP	Ports	Ford	4x4 Expedition XLT	2011	15	2026	103											\$40,000					
DT4	HE	Roads	Volvo	Multifunction Rock/Water/Plow	2009	18	2027	104				4,542								\$250,000				
EST1	EQ	PCR	Cargo Mate	Emergency Response Trailer	2012	15	2027	105												\$35,000				
GS12	EQ	WW	Marathon	Kato Generator Lift Station #4	2007	20	2027	106												\$50,000				
ML2	EQ	FM	Genie	Scissor Lift - Electric	2012	15	2027	107												\$25,000				
PWATV	GP	FM	Honda	Honda ATV 4x4	2012	15	2027	108												\$15,000				
RC5818	HE	PCR	Ford	14 Passenger Van	2012	15	2027	109	31,640											\$45,000				
S7	EQ	Ports	Buyers	Salt Dogg Electric Plastic	2012	15	2027	110												\$25,000				
TR11	EQ	Roads	Trailmax	Tilt-bed hauls D4, etc	2007	20	2027	111												\$75,000				
RG8	HE	Roads	Volvo	Grader G990	2010	18	2028	112				6,348											\$650,000	
CH5249	GP	CM	Ford	4x4 Expedition	2013	15	2028	113	11,211												\$45,000			
AC6	EQ	UFD	Bauer	Air Compressor-SCBA	2015	13	2028	114												\$50,000				
S5	EQ	Roads	Buyers	Salt Dogg Electric Stainless Steel	2013	15	2028	115												\$25,000				
CC3	HE	Roads	Ingersol Rand	Compactor	2009	20	2029	116				1,296											\$250,000	
GM3	EQ	FM	Toro	Riding Lawn Mower	2019	10	2029	117															\$25,000	
RC2682	GP	PCR-DIR	Ford	F250 4x4 Crewcab	2014	15	2029	118	7,689														\$60,000	
FL6	HE	P	CAT	Forklift - Propane	2009	20	2029	119															\$65,000	
PW2683	GP	Roads	Ford	F350 4x4 Super Cab salt spreader	2014	15	2029	120	13,910														\$45,000	
PW3479	GP	FM	Ford	Transit Cargo Van - Carps	2015	15	2030	121	1,346															
PW7213	GP	FM	Ford	F250 4x4 Super Cab Lift Gate	2015	15	2030	122	802															
LF4839	GP	LDF	Ford	4x4 PU Crew Cab F250 XL	2015	15	2030	123	3,000															
CV1	GP	LDF	Madvac	Compact Vacuum	2015	15	2030	124															\$30,000	
S4	EQ	Roads	Buyers	Salt Dogg Electric Stainless Steel	2015	15	2030	125																
BH11	HE	W	JCB	4x4 Backhoe	2016	15	2031	126																
AR1	EQ	Roads	Bagela	Asphalt Recycler	2011	20	2031	127																\$100,000
SD2920	GP	WW	Ford	F150 Pickup 4x4	2016	15	2031	128																

## FY22-31 Rolling Stock and Equipment Replacement Plan

# 10 Year Look-Ahead

**LEGEND:**

Salmon = General Fund
Pink = Electric Fund
Green = Solid Waste Fund
Blue = Ports Fund
Ivory = Wastewater Fund
Purple = Water Fund
White = FY22 Proposed New to Fleet
Yellow = FY22 Replacements

Abbreviations:			
Department of Public Works	DPW	Department of Public Utilities	DPU
Engineering	E	Water	W
Roads	Roads	Wastewater	WW
Facilities Maintenance	FM	Line Crew	LC
Supply	S	Powerhouse	P
Vehicle/Equipment Maintenance	VM	Solid Waste/Landfill	LDF
Director	DIR	Floater	Float
Deputy Director	DEP		
		City Hall	CH
		City Manager	CM
		Assistant City Manage	ACM
		Clerks	C
		Planning	Plan
		Finance	Fin
		Information Systems	IS
		Department of Public Safety	DPS
		Police	UPD
		Fire/EMS	UFD
		Animal Control Officer	ACO
		PCR	PCR
		Ports	Port
		Do Not Replace	DNR

Vehicle #	Class	Primary User	Make	Function / Description	Year	Life Cycle	Replace Date	FY22 Replace Priority	Miles	Replace With	Transfer To	Hrs	2020	2021	2022	2023	2024	2025	2026	2027	2028	2029	2030	2031
SD4363	HE	WW	Ford	F450 4x4 Flatbed	2016	15	2031	129	36															
BG1	EQ	DPW-E	Generac	Generator - LDF - Soil Aeration	2012	20	2032	130																
E3653	GP	LC	Ford	F250 4x4 Ext Cab w/Stahl box	2017	15	2032	131																
E8466	GP	LC	Ford	F150 4x4 Crew Cab	2017	15	2032	132																
E9076	GP	P	Ford	F250 4x4 Crew Cab w/Space Kap	2017	15	2032	133																
HM2309	GP	Ports	Ford	F250 Regular Cab XL	2017	15	2032	134																
HM2310	GP	Ports	Ford	F250 Regular Cab XL	2017	15	2032	135																
HM3659	GP	Ports	Ford	F350 Regular Cab Flatbed	2017	15	2032	136																
TR10	EQ	Roads	Gilson	Trailer (Cement Mixer)	1978	20	1998	137				5,740							\$50,000					
PW2653	GP	Roads	Ford	F350 Flatbed 4x4	2017	15	2032	138																\$200,000
PW3438	GP	Roads	Ford	F750 w/Dump Box	2017	15	2032	139																\$200,000
PW3660	GP	Roads	Ford	F350 Regular Cab Flatbed	2017	15	2032	140																\$150,000
S6	EQ	Roads	Buyers	Salt Dogg Electric	2017	15	2032	141																\$25,000
UFD1436	GP	UFD	Ford	4x4 Expedition	2017	15	2032	143																
UFD5149	GP	UFD	Ford	4x4 Expedition	2017	15	2032	144																
TR40	EQ	FM	Interstate	Ramp Trailer - School Loan	2000	20	2020	145																
W2312	GP	W	Ford	F250 Ext Cab w/Utility Box	2017	15	2032	146																
W6000	GP	W	Ford	F250 Ext Cab w/Utility Box	2017	15	2032	147																
UFD8364	GP	UFD	Pierce	Pumper Truck	2018	15	2033	148																
FL8	HE	WW	Manitou	Forklift	2014	20	2034	149																
CH4098	GP	IS	Ford	F250 4x4 Crew Cab w/Space Kap	2019	15	2034	150																
CH4106	GP	IS	Ford	F250 4x4 Extended Cab	2019	15	2034	151																
DPU7380	GP	DPU-DIR	Ford	4x4 Explorer	2019	15	2034	152																
E4126	GP	P	Ford	F250 4x4 Ext Cab w/Flatbed	2019	15	2034	153																
PW0466	GP	FM	Ford	F250 4x4 Super Cab w/rack	2019	15	2034	154																
PW0467	GP	VM	Ford	F250 4x4 Super Cab Tommy Lift	2019	15	2034	155																
PW0533	GP	FM	Ford	F250	2019	15	2034	156																
PW7379	GP	Eng	Ford	4x4 Explorer	2019	15	2034	157																
S8	EQ	Roads	Buyers	Salt Dogg Electric	2019	15	2034	158																
S9	EQ	Roads	Buyers	Salt Dogg Electric Stainless Steel	2019	15	2034	159																
UFD0465	GP	UFD	Ford	F250 4x4 Supercab Snow Plow	2019	15	2034	160																
UFD5247	GP	UFD	Ford	F150 Vaults	2019	15	2034	161																
W9802	GP	W	Ford	F350 Crew Cab Flatbed	2019	15	2034	162																
FL7	HE	WW	Toyota	Forklift - Electric	2015	20	2035	163																
FL9	HE	WW	Toyota	Forklift - Electric - Stand Up	2015	20	2035	164																
FL10	HE	S	Toyota	Forklift - Electric	2015	20	2035	165																
RG9	HE	Roads	CAT	Grader 14M3	2017	18	2035	166																
SD6223	GP	WW	Ford	4x4 Explorer	2020	15	2035	167																
TR3	EQ	DPS	Mirage	Response / Evidence Trailer	2015	20	2035	168																
TB1	HE	LDF	International	Tire Baler	2016	20	2036	169																
DT9	HE	Roads	International	Dump Truck International	2020	18	2038	170																
LF2	HE	LDF	CAT	950M Cat Loader	2018	20	2038	171																
L10	HE	Roads	CAT	930M Loader	2019	20	2039	172																

FY22-31 Rolling Stock and Equipment Replacement Plan

10 Year Look-Ahead

**LEGEND:**

Salmon = General Fund
Pink = Electric Fund
Green = Solid Waste Fund
Blue = Ports Fund
Ivory = Wastewater Fund
Purple = Water Fund
White = FY22 Proposed New to Fleet
Yellow = FY22 Replacements

**Abbreviations:**

Department of Public Works	DPW	Department of Public Utilities	DPU	City Hall	CH	Department of Public Safety	DPS
Engineering	E	Water	W	City Manager	CM	Police	UPD
Roads	Roads	Wastewater	WW	Assistant City Manage	ACM	Fire/EMS	UPD
Facilities Maintenance	FM	Line Crew	LC	Clerks	C	Animal Control Officer	ACO
Supply	S	Powerhouse	P	Planning	Plan	PCR	PCR
Vehicle/Equipment Maintenance	VM	Solid Waste/Landfill	LDF	Finance	Fin	Ports	Port
Director	DIR	Floater	Float	Information Systems	IS	Do Not Replace	DNR
Deputy Director	DEP						

Vehicle #	Class	Primary User	Make	Function / Description	Year	Life Cycle	Replace Date	FY22 Replace Priority	Miles	Replace With	Transfer To	Hrs	2020	2021	2022	2023	2024	2025	2026	2027	2028	2029	2030	2031
E7257	GP	LC	Ford	F550 Bucket Truck	2020	20	2040	173																
WX1	HE	Roads	CAT	Wheeled Excavator M314F	2020	20	2040	174																
GS19	EQ	W	CAT	Generator - Pyramid WTP	2016	25	2041	175																
BL1	HE	LDF	Mosley	Baler	1996	25	2021	DNR		Gasifier														
FL3	HE	P	Nissan	Forklift - Propane	1985	20	2005	DNR		DNR	Surplus Sale													
LF7211	GP	LDF	Ford	F250 Pickup 4x4	2002	15	2017	DNR			Surplus Sale													
PW0688	GP	VM	Ford	F150 4x4	2003	15	2018	DNR	55,345	DNR	Surplus Sale													
RH1	HE	LDF	Terex	Rock Hauler 33-05	1981	25	2006	DNR				3574												
BH12	EQ	FM	Kubota	Tractor-Backhoe	2011	15	2026	New FY21																
ML3	EQ	FM	Genie	Telescoping Man Lift	2020	15	2035	New FY21																
Unknown	GP	W	Ford	F250 Ext Cab w/Utility Box	2020	15	2035	New FY21																
RG3	HE	Roads	Volvo	Grader G976	2006	18	2024	Replaced FY18		RG9	Surplus Sale	9,126												
BH9	HE	WW	Case	580 Backhoe 4x4	1996	15	2011	Replaced FY20		BH2	Surplus Sale													
DT5	HE	Roads	GMC/Volvo	Dump Truck	1994	18	2012	Replaced FY20		New	Surplus Sale													
E4117	HE	LC	Ford	Bucket Truck	2001	20	2021	Replaced FY20		New	Surplus Sale													
PW3448	GP	FM	Ford	F250 Supercab 4x4	2000	15	2015	Replaced FY20		New	Surplus Sale													
SD5542	GP	WW	Ford	F150 4x4 Pickup	2004	15	2019	Replaced FY20	67,686		Surplus Sale													
UFDD0118	GP	UPD	Ford	F350 4x4 Supercab	2003	13	2016	Replaced FY20	40,741		Surplus Sale													
UFD5555	GP	UPD	Ford	F350 4x4 Equip Truck - Amaknak	1997	13	2010	Replaced FY20	8,520		VM													
CH7414	GP	CH/Float	Ford	4x4 Explorer	2003	15	2018	Replaced FY21		CH3710	Surplus Sale													
E5629	GP	LC	GMC	1 Ton Pickup w/Service Box	2008	15	2023	Replaced FY21		New	Surplus Sale													
ML1	EQ	FM	Genie	Telescoping Man Lift	1992	15	2007	Replaced FY21		ML3	Surplus Sale													
PW4212	GP	Roads	Ford	F350 4x4, Flatbed w/snow plow	2003	15	2018	Replaced FY21		New	Surplus Sale													
PW7449	GP	DPW-DIR	Ford	F150 4x4 Pickup	2000	15	2015	Replaced FY21		New	Surplus Sale													
SD5275	GP	WW	Ford	F350 Flatbed	2004	15	2019	Replaced FY21	41,255		Surplus Sale													
UPD0232	GP	DPS/ACO	Ford	4x4, Explorer	2005	15	2020	Replaced FY21	121,791	UPD8407	Surplus Sale													
UPD9826	GP	DPS/DIR	Ford	4x4, Expedition - waiting for new	2012	7	2019	Replaced FY21																
VT3	HE	Roads	Mack	Vector Truck	2020	20	2040	Replaced FY21																
													\$1,259,000	\$727,287	\$1,824,642	\$1,990,000	\$1,645,000	\$1,720,000	\$1,490,000	\$1,140,000	\$1,370,000	\$795,000	\$930,000	\$675,000



## This Vehicle Going on Surplus Sale

The vehicle pictured, driven by City Hall personnel as their Floater, will be replaced with CH7413 which is a 2003 4x4 Ford Expedition. The vehicle pictured will be disposed of at our annual Surplus Sale held at the DPW Warehouse.

# FY22-31 CMMP

## Rolling Stock Replacement Plan

### Surplus Sale

Vehicle #	Dept	Primary Driver	Description	Year	Life Cycle	Replace Date	Miles	Transfer To
CH3710	City Hall	Floater	Blue Ford Ranger PU	1996	15	2011	49,694	Surplus Sale



## This Vehicle Going on Surplus Sale

The vehicle pictured, driven by DPW Roads Division personnel, will be replaced with a new 4x4 F550 Rollback Car Hauler. The vehicle pictured will be disposed of at our annual Surplus Sale held at the DPW Warehouse.

# FY22-31 CMMP

## Rolling Stock Replacement Plan

### Surplus Sale

Vehicle #	Dept	Primary Driver	Description	Year	Life Cycle	Replace Date	Miles	Transfer To
PW1992	DPW	Roads	4x2 F250 Ford Flatbed	1995	15	2010		Surplus Sale



## This Vehicle Going on Surplus Sale

The vehicle pictured, driven by DPW Roads Division personnel, will be replaced with a new one ton 4x4 Chevy Silverado with a flat bed. The vehicle pictured will be disposed of at our annual Surplus Sale held at the DPW Warehouse.

# FY22-31 CMMP

## Rolling Stock Replacement Plan

### Surplus Sale

Vehicle #	Dept	Primary Driver	Description	Year	Life Cycle	Replace Date	Miles	Transfer To
PW6372	DPW	Roads	4x4 F350 Ford Flatbed w/plow	2003	15	2018	43,291	Surplus Sale



## This Vehicle Going on Surplus Sale

The vehicle pictured, driven by our Roads Maintenance personnel, will be replaced with a new 12 cubic yard dump truck. This 1996 vehicle is 7 years past its replacement date, has been well maintained, and runs good but has seen a lot of hard use. Chassis and drive train components are worn beyond repair. Rebuilding this faithful old truck would cost more than purchasing a new one. The vehicle pictured will be disposed of at our annual Surplus Sale held at the DPW Warehouse.

**FY22-31 CMMP**

## Rolling Stock Replacement Plan

### Surplus Sale

Vehicle #	Dept	Primary Driver	Description	Year	Life Cycle	Replace Date	Miles	Transfer To
DT7	DPW	Roads	Volvo 12 CY Dump Truck	1996	18	2014		Surplus Sale



## This Unit Going on Surplus Sale

The Hydro-Seeder/Mulcher pictured, utilized by DPW Roads Division personnel, will not be replaced. It is seldom used, only 2 or 3 times each summer for a few days. The rest of the time it sits outside deteriorating mechanically and electrically. Mechanics spend more time each year getting it ready to use than the time it's actually in use. Our best option is to contract with a local contractor for our periodic needs. The unit pictured will be disposed of at our annual Surplus Sale held at the DPW Warehouse.

# FY22-31 CMMP

## Rolling Stock Replacement Plan

### Surplus Sale

Vehicle #	Dept	Primary Driver	Description	Year	Life Cycle	Replace Date	Hours	Transfer To
HS1	DPW	Roads	Hydro-Seeded/Mulcher	1997	20	2017		Surplus Sale



## This Unit Going on Surplus Sale

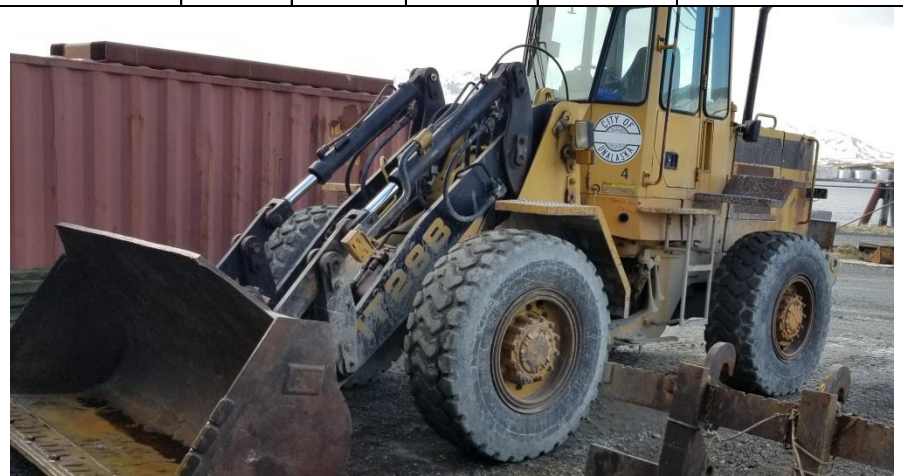
The loader pictured, driven by DPU Solid Waste Division personnel, will be replaced with L1 which is an IT28G CAT loader presently in use by DPW Roads. The loader pictured is a 1991 unit and will be disposed of at our annual Surplus Sale held at the DPW Warehouse.

# FY22-31 CMMP

## Rolling Stock Replacement Plan

### Surplus Sale

Vehicle #	Dept	Primary Driver	Description	Year	Life Cycle	Replace Date	Hours	Transfer To
L4	DPU	Landfill	IT28B CAT Loader	1991	18	2009		Surplus Sale



## This Unit Going on Surplus Sale

The loader pictured, driven by DPU Solid Waste Division personnel, will be replaced with a new 908 CAT loader. The loader pictured is a 2007 unit and is used extensively on a daily basis at the Landfill. The one pictured will be disposed of at our annual Surplus Sale held at the DPW Warehouse.

# FY22-31 CMMP

## Rolling Stock Replacement Plan

### Surplus Sale

Vehicle #	Dept	Primary Driver	Description	Year	Life Cycle	Replace Date	Hours	Transfer To
LF1	DPU	Landfill	L20B-P Volvo Loader	2007	18	2025		Surplus Sale



## This Vehicle Going on Surplus Sale

The crane truck pictured, driven by the DPU Powerhouse Division personnel, is shared with the DPU Water Division and will be replaced with a 2 ton Chevrolet crane truck. This truck is a 1986 model and is 16 years past its replacement date, is in poor condition and has only been kept in service because of its limited use. Because the Powerhouse and Water Divisions require a crane truck in a higher state of readiness, this one needs to be replaced. The vehicle pictured will be disposed of at our annual Surplus Sale held at the DPW Warehouse.

FY22-31 CMMP

## Rolling Stock Replacement Plan

### Surplus Sale

Vehicle #	Dept	Primary Driver	Description	Year	Life Cycle	Replace Date	Hours	Transfer To
E1214	DPU	Line Crew	F800 Ford Crane Truck	1986	20	2006		Surplus Sale





## This Unit Going on Surplus Sale

The genset pictured, used by DPU Water Division personnel, will be replaced with a new 100 KVA Generac genset. The genset is used as backup power for water wells in the Valley. The genset pictured is a 1994 unit with a John Deere engine mated to a Kato generator. It will be disposed of at our annual Surplus Sale held at the DPW Warehouse.

# FY22-31 CMMP

## Rolling Stock Replacement Plan

### Surplus Sale

Vehicle #	Dept	Primary Driver	Description	Year	Life Cycle	Replace Date	Hours	Transfer To
GS13	DPU	Water	Kato Genset w/John Deere Engine	1994	20	2014		Surplus Sale

