

---

---

## MEMORANDUM TO COUNCIL

---

---

To: Mayor and City Council Members  
From: Thomas Roufos, Associate Planner, Planning Department  
Through: William Homka, City Manager  
Date: June 13, 2023  
Re: Site Profiles for Unalaska Fishermen's Memorial

---

---

**SUMMARY:** The following is a preliminary review of the identified potential locations near the Carl E. Moses Boat Harbor (CEM) for placement of the Unalaska Fishermen's Memorial. The City of Unalaska contributed \$250,000 to the project through the Rusting Man Foundation and the artist, Karel Machalek. The artwork is nearing completion and being shipped from Czechoslovakia. A location for the memorial has not been determined, and a summary profile of five (5) sites is attached for consideration.

**PREVIOUS COUNCIL ACTION:** City Council has express support for the memorial project and directed the City Manager to review the CEM area for development of the memorial site. City Council also approved a \$250,000 contribution to the project -- \$125,000 in FY23 and \$125,000 in FY24.

**BACKGROUND:** A site needs to be selected. Parameters for consideration include visibility, accessibility, security and overall suitability. Also, the general consensus gleaned from previous Council discussions is that the site should be near the CEM. The Planning Department enlisted the assistance of the Fire Department to prepare a list of pros and cons for the five potential sites.

**DISCUSSION:** The statue and mast is 25 feet tall, including a 5 foot tall and 25 foot wide pedestal. Three fishermen representing local fishing will each be 7 feet tall. The Planning and Fire Departments were able to approximate the height of the pedestal with the rails of Fire's utility pickup truck and three people standing on the rails were used to approximate the artwork's visibility for the entire memorial, however none of them are 7 feet tall individually.

Five sites were reviewed:

1. End of Road
2. Float A Corner
3. Overlook
4. Bridge
5. Channel Overlook

Of chief importance was visibility, not just from the CEM facility, but also from the general area and Airport Beach Road, knowing that it would be a site for both fishermen and the public to enjoy. Each site will need varying degrees of investment to place the statue, create parking, landscaping and lighting.

The preferred location is #3, the Overlook, given its prominent location, being out of the way of operations of the port, and clear land for landscaping. Second preference would be #5, the Channel Overlook, given its broad area of sight lines, segregated interaction between the memorial and dock functions, access to the main road, and similar blank slate. The two preferred locations will require an agreement or land lease with Ounalashka Corporation. Discussions with

OC about this site have yielded excitement about the opportunity to demonstrate the commitment of the Tri-lateral group in working together to recognize fishermen who support our community.

The remaining sites are less desirable for several reasons including more interference with CEM operations, parking for vehicles and trailers is already tight. Furthermore, the site at the end of the road would displace the oil spill response equipment, which is pre-staged for quick deployment. The bridge site, while in a sheltered location, has poor visibility from the CEM, limited space, and safety concerns due to its proximity to the intersection.

**ALTERNATIVES:** The City is considering potential sites for the Unalaska Fishermen's Memorial and these are 5 options, which do not include the City's Memorial Park on Summer Bay Road.

**FINANCIAL IMPLICATIONS:** There are significant costs associated with this potential project, no matter the location.

**LEGAL:** N/A

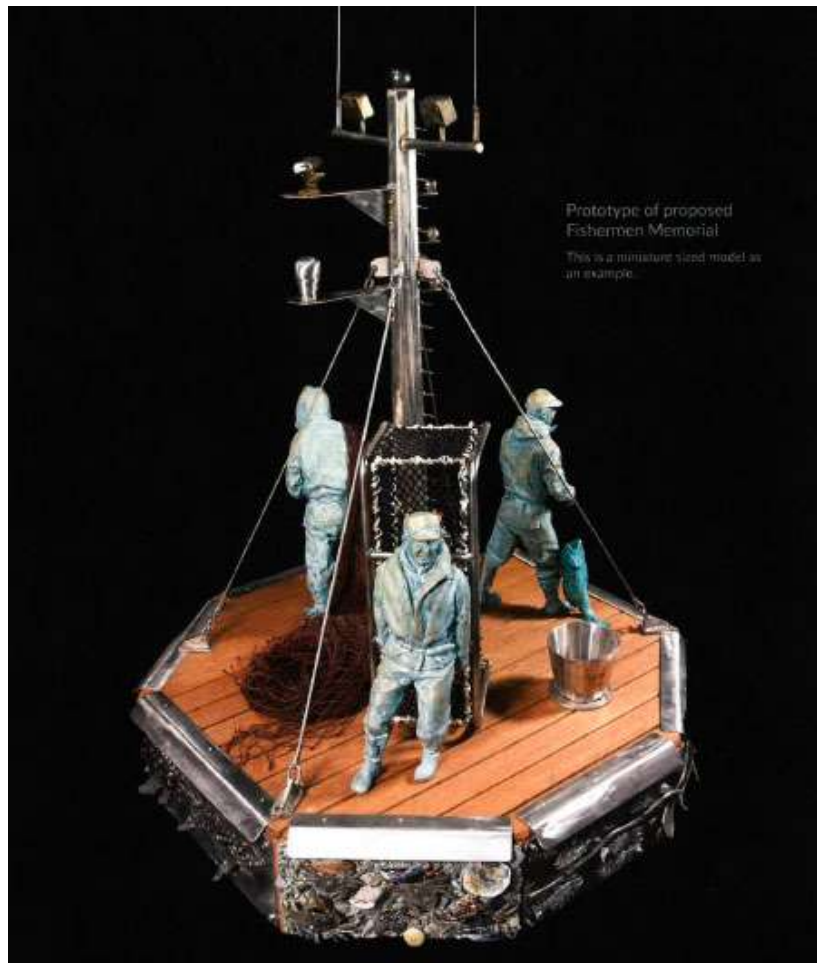
**STAFF RECOMMENDATION:** N/A

**PROPOSED MOTION:** N/A

**CITY MANAGER COMMENTS:** I support the sites and the rankings as presented by the Planning Department.

**ATTACHMENTS:**

- Images of the artwork provided by the artist; and
- Profiles of Possible Locations



**Prototype of proposed Fishermen Memorial**

This is a miniature sized model as an example.

**METHODS OF INSTALLATION**

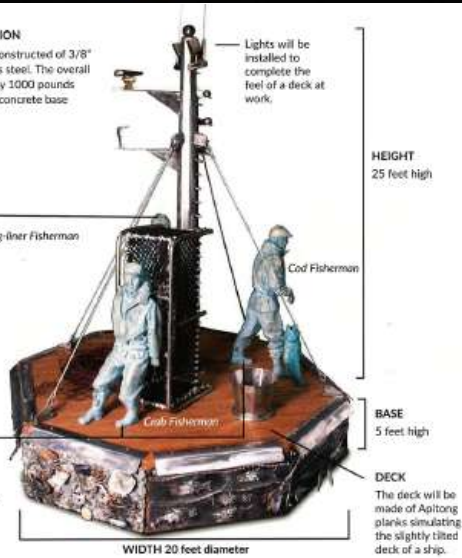
This exterior piece will be constructed of 3/8" mild steel and 1/8" stainless steel. The overall weight will be approximately 1000 pounds and securely anchored in a concrete base flush to the ground.



Long-liner Fisherman

**BRONZE CAST**

The three fishermen will be cast in bronze. Typically bronze oxidizes only superficially; once a copper oxide layer is formed, the underlying metal is protected from further corrosion.



**BASE**

The octagon shaped base will be constructed of concrete, and wrapped with stainless steel sea life figures.

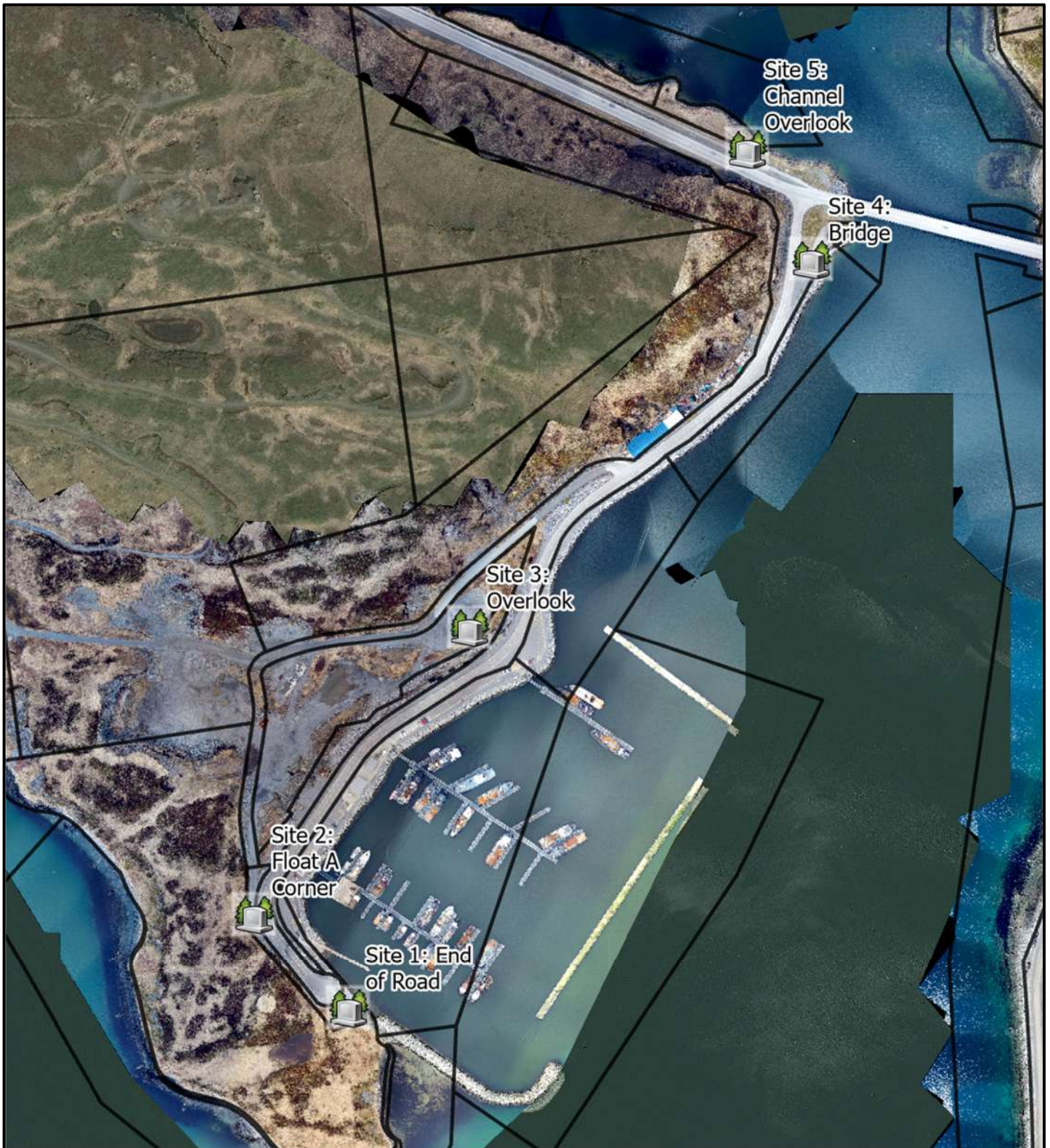
**CARE & MAINTENANCE**

No maintenance is required. The mild steel will naturally oxidize to maintain its brownish hue while the stainless steel requires no maintenance and will retain its light colored appearance. Should storm events cause debris to remain on the installation, simple hosing with water or lightly brushing will easily restore the piece.



# Fishermen's Memorial Site Profiles:

## Overview





# Fishermen's Memorial Site Profiles:

## Site 1: End of Road



### Pros:

- Existing Pad
- Minimal Site Work Needed

### Cons:

- Loss of Turn-Around
- Loss of Trailer Parking
- Loss of Spill Response Area
- Visibility Limited to C-Float
- Lack of Dedicated Parking
- Ports Department Least Preferred Location







# Fishermen's Memorial Site Profiles:

## Site 2: A-Float Corner



<b>Pros:</b>	<b>Cons:</b>
<ul style="list-style-type: none"><li>• More Visible from Overall CEM</li></ul>	<ul style="list-style-type: none"><li>• Lack of Dedicated Parking</li><li>• Invisible from Airport Beach Road</li><li>• Requires Site Work</li><li>• Small Area</li><li>• Interferes with Trailer Parking</li><li>• Invites Traffic Deep Into CEM</li><li>• Interferes with Dock Operations Due to Parking</li></ul>



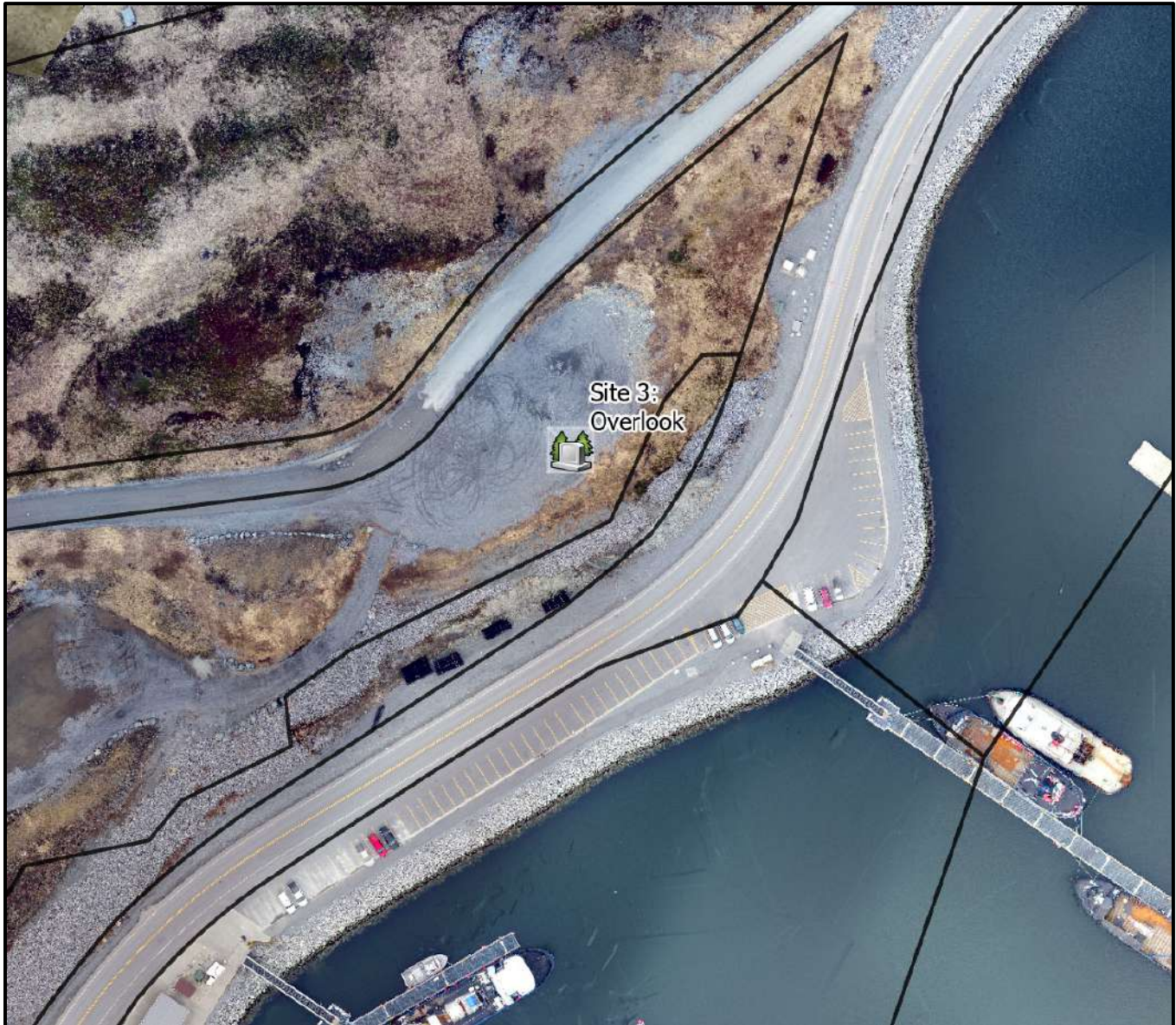






# Fishermen's Memorial Site Profiles:

## Site 3: Overlook



### Pros:

- Ports Department Preferred Location
- Blank Slate for Best Design
- Peak Visibility for All Vessels, & Airport Beach Road. Prominent Location
- Does Not Interfere with Dock Operations
- Must Pass Memorial to Utilize Docks
- Potential partnership with OC and/or Q-Tribe

### Cons:

- Requires Site Work for Maximum Visibility, Parking, Accessibility, Lighting
- Property Not Owned by the City
- Wind Exposure Risk











# Fishermen's Memorial Site Profiles:

## Site 4: Bridge



### **Pros:**

- City Owned Unused Space
- Visible to Airport Beach Road
- Must Pass Memorial to Utilize CEM Docks
- Waterfront Location
- Blank Slate for Best Design.
- Waterfront Location

### **Cons:**

- Limited Parking Area
- Below Grade
- Not Very Visible From CEM
- Turn-off Close to Major Intersection with Blind Corner
- Requires Extensive Site Work











# Fishermen's Memorial Site Profiles:

## Site 5: Channel Overlook



### Pros:

- Ports Second Preference
- Must Pass Memorial to Utilize CEM Dock
- Waterfront Location
- Highest Visibility from Airport Beach Road
- Blank Slate for Best Design
- Potential Partnership with OC and/or the Q-Tribe

### Cons:

- Not Visible From CEM
- Access Must Cross Pedestrian Pathway
- Exposed to High Winds
- Limited Space Adjacent to Main Road
- Property not owned by the City





