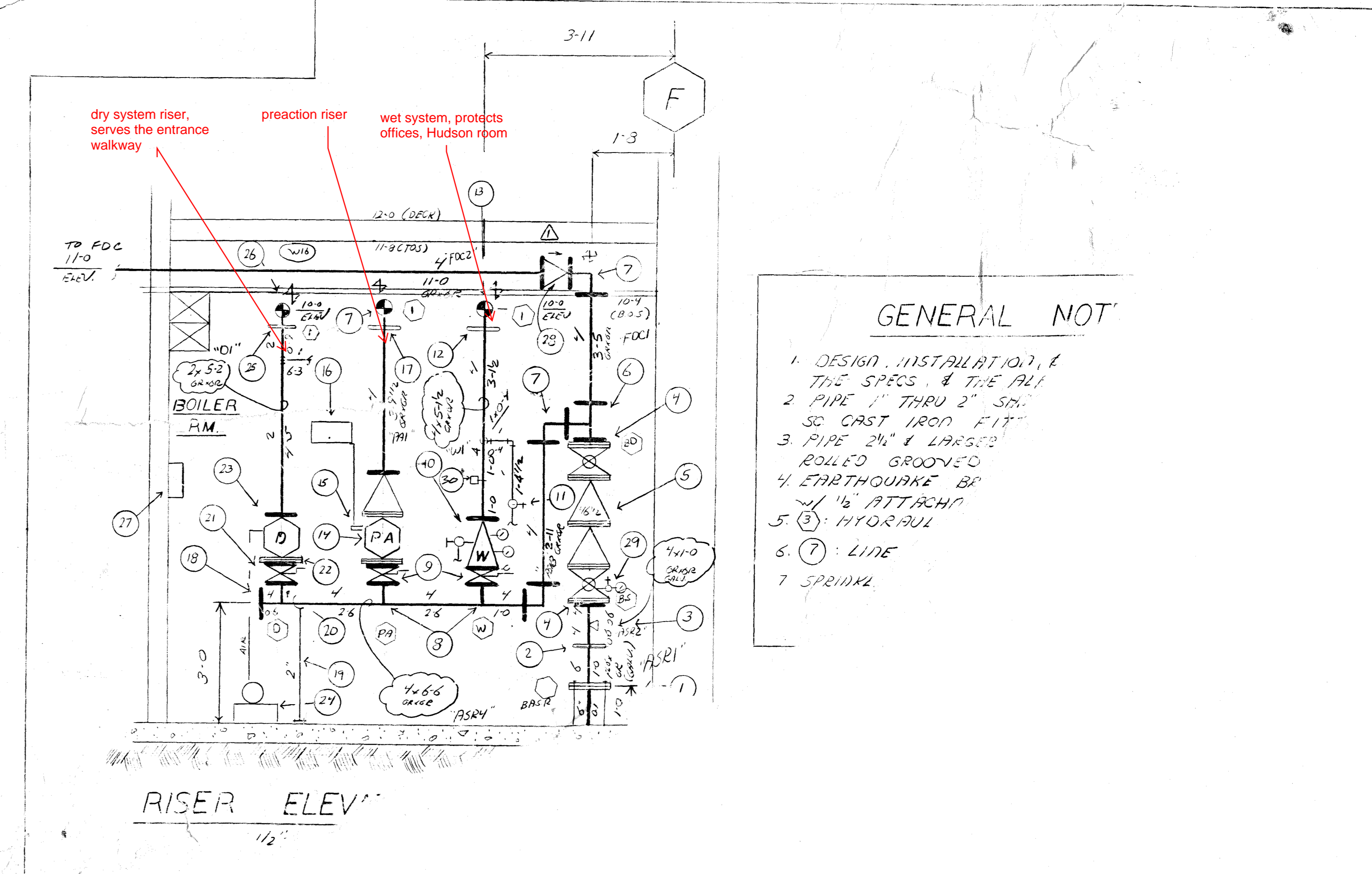


- ### RISER LEGEND
- GRINNELL FIRE PROTECTION - STARTS WORK @ 6' 125' FLOOR (ALL OTHER UNDERGROUND BY OTHERS)
 - 6x4 RED GR COUPLING
 - 2" OUTLET FOR DOMESTIC
 - 4" FLANGE GROOVE ADAPTER
 - 4" AMES MOD 200000 VERTICAL DOUBLE CHECK BACKFLOW - 1054Y VALVES - 1 TAMPER SWITCHES (WIRING BY OTHERS)
 - 4" GR TEE
 - 4" GR 90° ELL
 - 4 on 4 GO-L x 0-64 C-GR
 - 4" GRUNLOK SERIES 7700 FP GR-GR BUTTERFLY VALVE - 1 TAMPER SWITCH (WIRING BY OTHERS)
 - 4" GRINNELL MOD 517 GR-GR "READY-RISER" CHECK VALVE (WIRING BY OTHERS)
 - 1" INSPECTOR'S TEST VALVE - 1 SIGN
 - 4.3 RED GR COUPLING
 - 3 GR 90° ELL
 - 4" GRINNELL MOD 517 MULTIMATIC DELUSE VALVE (PRE ACTION) - 1 MOD RMV ELECTRIC ACTUATION TRIM & SOLENOID VALVE (WIRING BY OTHERS) (1171A B3)
 - GRINNELL MOD-FHM SUPERVISORY AIR MAINTENANCE - DELINE
 - GRINNELL MOD-FH2 SUPERVISORY AIR PANEL
 - 4" FLEXIBLE GROOVE COUPLING
 - 4 GR CAP
 - 2" PIPE CLAMP PIPE STAND x 3'0" HIGH FF-E
 - 2 on 4 GO-L x 0-54 C-GR
 - 2" GRUNLOK SERIES 7700 FP GR-GR BUTTERFLY VALVE - 1 TAMPER SWITCH (WIRING BY OTHERS)
 - 2" FLANGE GROOVE ADAPTER
 - 2" GRINNELL MOD F3061 FG-GR DRY PIPE VALVE - 1 PRESSURE SWITCH (WIRING BY OTHERS)
 - AIR COMPRESSOR ON VIBRATION ISOLATORS (SEE SECTION 15245) GPM 1500-17500X
 - 2" FLEXIBLE GR COUPLING
 - 2" GR 90° ELL
 - SPARE HEAD BOX - 1 (6) SPRINKLERS & SPARE WRENCHES
 - 4" GRUNLOK SERIES 7700 FP GR-GR CHECK VALVE
 - 1/2" BUSHING - 1 1/4" x 1/4" NIPPLE - 1 1/4" SOB VALVE WITH PLUG & #300 GAUGE
 - 4" POTTER MODEL VGR-F WATER FLOW SWITCH



IMPORTANT		CONTRACT RESPONSIBILITIES		SPECIAL REQUIREMENTS		FOREMAN NOTES	
In localities subject to freezing conditions, it is the owner's responsibility to provide heat throughout wet pipe sprinkler systems and to ensure for dry pipe design and other types of valves controlling water supplies to the system.		ITEM	DATE	OTHERS	DATE	OTHERS	ANY DESIGN CHANGES OR REVISIONS FOR THIS PLAN ORDERED THRU THE CONTRACTOR.
This drawing and the information contained herein are the property of Grinnell Fire Protection Systems Company, Inc. and/or its subsidiaries and are loaned upon the express condition that the same be returned to GFPS upon request. All information herein contains shall be treated as secret and confidential; no reproduction of this drawing or any part thereof shall be made without the written consent of GFPS.		DRY PIPE WATER PROTECTION			GRINNELL F.P.		CONTRACT: FEAR 1
		UNDERGROUND WATER MAINS			GRINNELL F.P.		PIPING: 307
		ELEVATION			GRINNELL F.P.		
		WIRING			GRINNELL F.P.		
		PAINTING			GRINNELL F.P.		