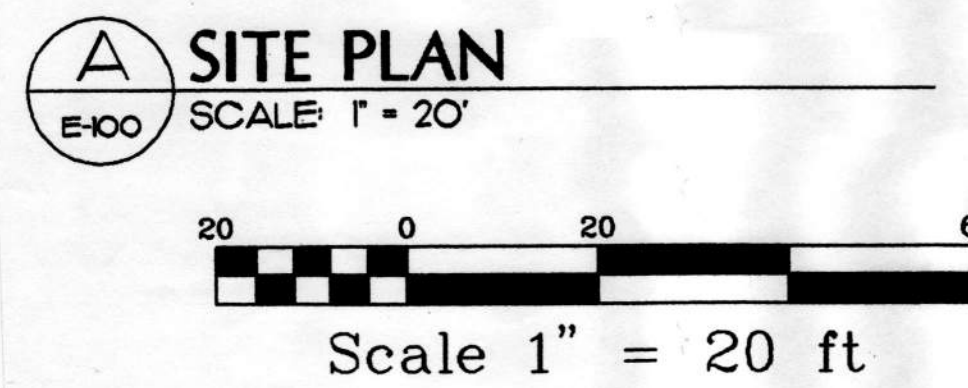


NOTES

- ① PROVIDE WALL BRACKET VERSION FOR THIS FIXTURE. WALL MOUNT ON TOWER AS HIGH AS POSSIBLE.
- ② CONNECT THRU EXTERIOR LIGHTING CONTROL TO INDICATED CIRCUIT. SEE DETAIL D5-200.
- ③ BASE BID ONLY. DELETE UNDER ADDITIVE ALTERNATE CONDITION.
- ④ SEE DETAIL G5-300 FOR POLE BASE.



LEGEND		
ABBR.	EXPLANATION	SYMBOL
NIC	NOT IN CONTRACT	
IGC	IN GENERAL CONSTRUCTION	
UON	UNLESS OTHERWISE NOTED	
A/100	LIGHTING FIXTURE DESIGNATION - SEE SCHEDULE	
ETR	EXISTING TO REMAIN	
N.L.	NIGHT LIGHT	
WP	WATERPROOF	
E	EMERGENCY LIGHT, CIRCUIT, PANEL	
C	CONDUIT, CONCEALED. SIZE AS NOTED (TYP.)	
	CONDUIT, UNDERGROUND OR UNDERFLOOR	
	CONDUIT, EXPOSED	
FLEX	CONDUIT, FLEXIBLE	
	MULTI-OUTLET ASSEMBLY--RECEPTACLES AS INDICATED	
	HOMERUN TO PANEL/CIRCUITS AS NOTED	
	WIRE COUNT OF # 12 UON/SPECIFIED	
	CONDUIT UP	
	CONDUIT DOWN	
	PANELBOARD - SEE SCHEDULES	
	REFER TO INDICATED NOTE	
	PUBLIC PAY PHONE BOX	
	TELEPHONE RECEPTACLE IN FLOOR BOX	
	DUPLEX RECEPTACLE - NEMA 5-20R	
	DUPLEX RECEPTACLE - NEMA 5-20R GFCI TYPE	
	ISOLATED GRD DUPLEX RECEPTACLE - NEMA 5-20R	
	DUPLEX RECEPTACLE IN FLOOR BOX	
	RECEPTACLE - NEMA CONFIGURATION AS NOTED	
	TELEVISION RECEPTACLE	
	JUNCTION BOX	
	SINGLE PHASE MOTOR - SIZE AS INDICATED	
	THREE PHASE MOTOR - SIZE AS INDICATED	
	MOTOR CONTROLLER	
	MOTOR DISCONNECT	
	COMBINATION STARTER/DISCONNECT	
XFMR	TRANSFORMER	
	MAGNETIC DOOR HOLDER	
SW	SWITCH - SINGLE POLE	
	SWITCH - TWO POLE	
	SWITCH - THREE WAY	
	SWITCH - FOUR WAY	
	SWITCH - DIMMING TYPE	
	SWITCH - WITH PILOT LIGHT	
	SWITCH - THERMAL OVERLOAD	
	SWITCH - LOW VOLTAGE	
	SWITCH - WITH TIMER	
	PHOTOELECTRIC TYPE SMOKE DETECTOR	
	IONIZATION TYPE SMOKE DETECTOR	
	HEAT DETECTOR - F INDICATES FIXED TEMP ONLY	
	RESIDENTIAL TYPE SMOKE DETECTOR	
	DUCT MOUNTED SMOKE DETECTOR	
	FIRE ALARM HORN/STROBE	
	FIRE ALARM STROBE	
	WEATHERPROOF FIRE ALARM HORN	
	FIRE ALARM MANUAL STATION	
FACP	FIRE ALARM CONTROL PANEL	
T'STAT	THERMOSTAT	
	TEL/DATA BOX	
	PUSHBUTTON SWITCH	
TTB/C	TELEPHONE TERMINAL BOARD/CABINET	
STBY	STANDBY CIRCUIT	
PC	PHOTOCELL	
TC	TIMECLOCK	
	CLOCK	
	FIRE ALARM ANNUNCIATOR	
	MAGNETIC DOOR SWITCH	
	SECURITY ALARM PANEL	
	SOUND/CLOCK CONSOLE	
	CALL-IN SWITCH	
	SPEAKER ASSEMBLY - CEILING MOUNTED	
	WALL MOUNTED SPEAKER ASSEMBLY	
	BELL	
	COMBINATION SPEAKER/CALL-IN SWITCH	
CCTV	CLOSED-CIRCUIT TELEVISION CAMERA	
	EXIT SIGN - SELF POWERED	
	BATTERY-POWERED EMERGENCY LIGHT	
	LIGHTING FIXTURES - VARIOUS TYPES AS NOTED	
	SHADING INDICATES EMERGENCY LIGHTING FIXTURE	
	DIAGONAL LINE INDICATES STANDBY FIXTURE	

THIS IS A STANDARD LEGEND, SOME SYMBOLS SHOWN ON LEGEND ARE NOT NECESSARILY ON THE DRAWING.

Plot Time: 07:27:53
Plot Date: 04/09/98
DWG Name: TRACEY:7033_E100.dwg

MBA Consulting Engineers, Inc.
3812 Spruce Road, Suite 200 • Anchorage, AK 99503
(907) 274-2522 • Fax: (907) 274-2523 • Email: mba@mba.com

City of Unalaska

UNALASKA LIBRARY

AS-BUILT

Unalaska, Alaska

LIVINGSTON STONE

ARCHITECTURE
PLANNING
INTERIOR DESIGN

3000 ANCHORAGE BOULEVARD
SUITE 801
ANCHORAGE, ALASKA 99503-0801
TEL: 907 562 6888

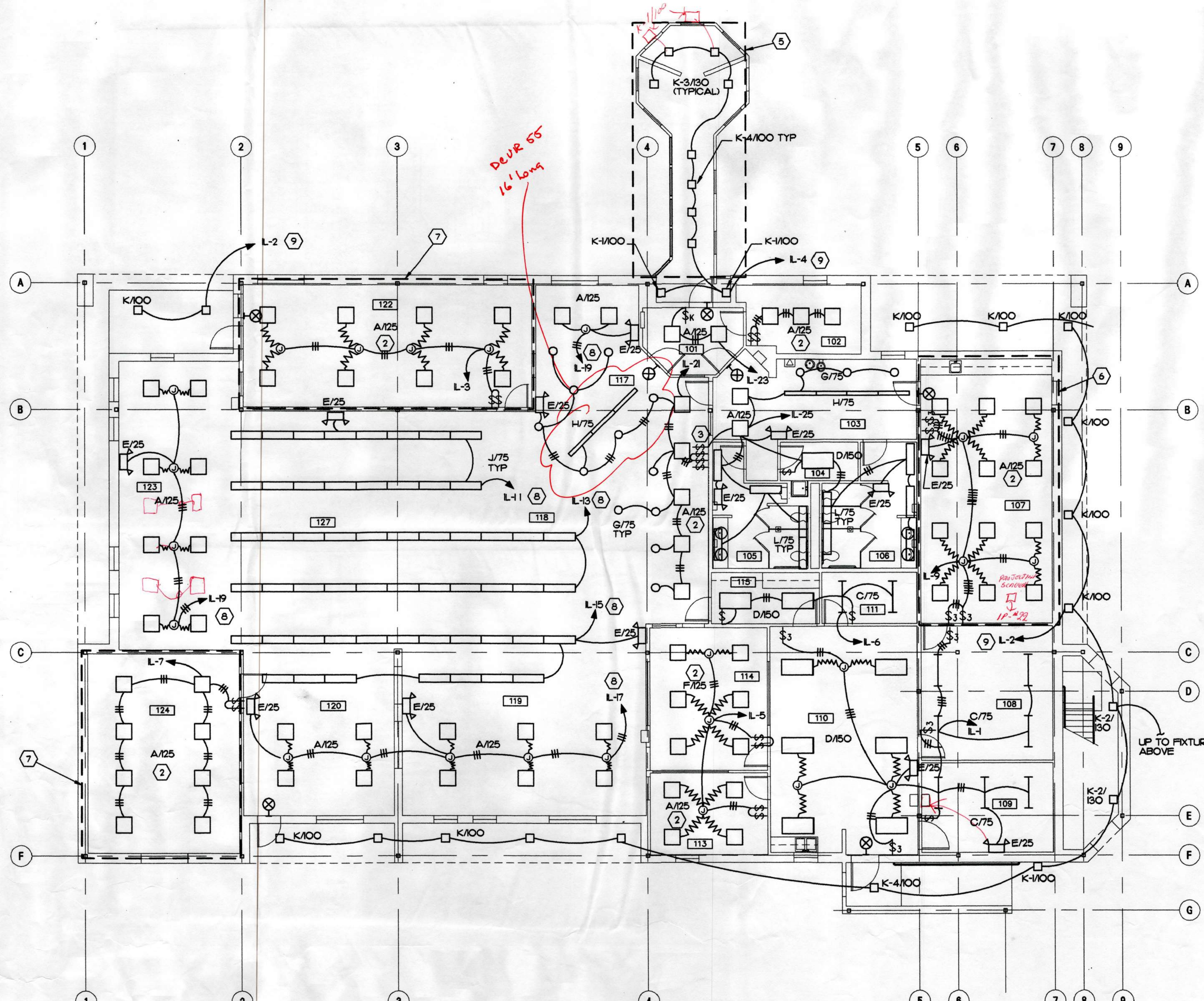


Copyright © 1998 by Livingston Stone, Inc.
All rights reserved. All parts of this drawing and the design it represents are instruments of service, and without the expressed, written permission of Livingston Stone, Inc. remain its exclusive property, and shall not be used, reproduced, or stored in any form. The "Livingston Stone, Inc." name and logo are trademarks of Livingston Stone, Inc.

PROJECT NO: 714.10
DRAWN BY: TLC
REVIEWED BY: DJM
DATE: APRIL 10, 1998

TITLE
SITE PLAN AND LEGEND

SHEET NO.
E-100



LIGHTING FIXTURE SCHEDULE

KEY	LAMPS		MTG. HT.	DESCRIPTION	MANUFACTURERS NO.
	NO.	TYPE			
A/125	3	F40BX 3500K	RECESSED CEILING	2' X 2' RECESSED PARABOLIC TROFFER, 1 2-LAMP AND 1 H-LAMP BALLAST.	LITHONIA #2PM3N 3CF40 9LD
C/75	2	F32T8 3500K	SURFACE CEILING	OPEN STRIP FLUORESCENT WITH WIRE GUARD ACCESSORY.	LITHONIA #C232
D/150	4	F32T8 3500K	RECESSED CEILING	2'X4' RECESSED LENSED TROFFER, 1 4-LAMP BALLAST.	LITHONIA #2SP432 A12125
E/25	2	5W MR16	WALL MNT AS HIGH AS POSSIBLE	ARCHITECTURAL EMERGENCY UNIT. BATTERY SHALL BE MAINTENANCE FREE LEAD 10 YEAR LIFE.	DUAL-LITE LZ SERIES
F/125	3	F40BX 3500K	RECESSED CEILING	2'X2' RECESSED PARABOLIC TROFFER, IES RP-1 COMPLIANT, 1 2-LAMP AND 1 H-LAMP BALLAST.	LITHONIA #2PM0GB 3CF40 12LS
G/75	2	CFQ26 3500K	RECESSED CEILING	8" APERTURE CAN STYLE DOWNLIGHT, BLACK MILLIGROOVE BAFFLE WITH CAST TRIM RING, COLOR SELECTED BY ARCH.	PRESCOLITE #CFR26EB-B492
H/75	2	F32T8 3500K	AC CABLE SUSPENSION SEE ARCH. DRAWINGS.	SUSPENDED INDIRECT UPLIGHT, SUSPENSION LENGTH AS REQD FOR BOTTOM OF FIXTURE TO BE EVEN WITH LOWER CEILING. CURVED BOTTOM, WITH CRISP LENS EDGE AND FLAT CURVED LENS. COLOR SHALL BE WEDGEWOOD.	LINEAR #R38-1-2-T8-120-NS -WD
J/75	2	F32T8 3500K	PENDENT MOUNT - 9'-0" AFF	SUSPENDED LOUVERED DIRECT FIXTURE, SUSPENDED FROM STRUCTURAL GRID POWER FEEDS FROM BOXES AT STRUCT. CEILING (CORD AND PLUG CONNECTION WITH CORD LENGTH ADEQUATE TO REACH HIGHEST CEILING HEIGHT) CONTINUOUS ROWS AS SHOWN ON PLAN. COLOR SHALL BE WEDGEWOOD.	LINEAR #D673-D-2-T8-120-MBL-WD
K/100	1	70W MH	SURFACE CEILING	1'X1'8" NOMINAL SQUARE OUTDOOR FIXTURE, SURFACE CEILING MOUNTING, WET LOCATION LISTED, TAPERED SQUARE PRISMATIC LENS. H-PF -20 DEGREES F BALLAST.	MOLDCAST MDL-5-00-19-12
K-1/100	1	70W MH	WALL LP 9'	SAME AS K/100 ONLY WALL MOUNTED.	MOLDCAST MDL-1-02-19-12
K-2/130	1	100W MH	WALL LP 9'	SAME AS K-1/100 ONLY 100W BALLAST AND LAMP.	MOLDCAST MDL-1-02-16-12
K-3/130	1	100W MH	SURFACE CEILING	SAME AS K/100 ONLY 100 WATT BALLAST AND LAMP.	MOLDCAST MDL-5-00-16-12
K-4/100	1	70W MH	RECESSED CEILING	SAME AS K/100 ONLY RECESSED MOUNTING.	MOLDCAST MDL-5-02-19-12
L/75	2	F32T8	SURFACE CEILING	SURFACE MOUNT RECTANGULAR FIXTURE WITH STRAIGHT BLADE WHITE LOUVER, 6" X 6" NOMINAL CROSS SECTION. COLOR SHALL BE WEDGEWOOD.	LINEAR #Q673-D-2-T8-120 PBL-WD
M/455	1	400W MH	POLE +30' AFF OR AS NOTED	COMPACT SITE LIGHTING FIXTURE, IES TYPE II DISTRIBUTION, 30' NOMINAL FIXTURE HEIGHT DIRECT BURY TYPE FIBERGLASS POLE. SEE SPECIFICATION SECTION 16530 AND DETAIL 05-300. FIXTURE & POLE SHALL BE WHITE.	KIM #1A/AR3/400M-120/VH-1P SHAKESPEARE #B235-0255BL20 POLE
P/100	1	70W MH	IN-GRADE	ALUMINUM BASE BOLLARD WITH CAST ALUMINUM DOME TOP AND LOUVERS. 43" HIGH. COLOR SHALL BE WHITE.	BEGA #8516MH
⊗			WALL +8'-0"	SELF POWERED EXIT SIGN, SINGLE FACE, CEILING OR WALL MOUNTED AS SHOWN ON PLAN, ARROWS AS SHOWN. WHITE HOUSING, GREEN LETTERING. 20 YEAR LIFE.	ISOLITE #2040-XX-20

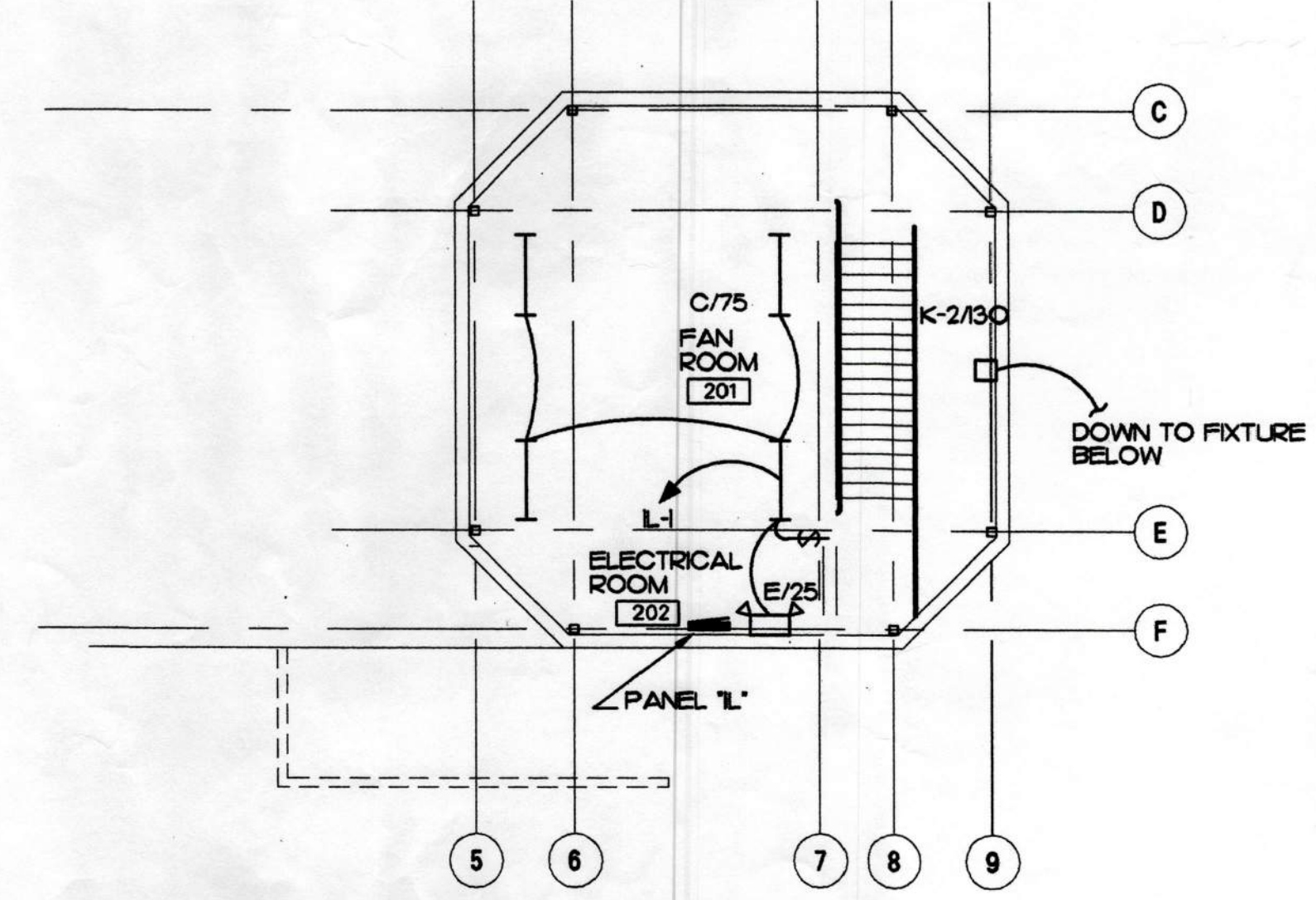
MBA Consulting Engineers, Inc.
 3812 Shepard Road
 Anchorage, Alaska 99507
 (907) 274-2822 • FAX (907) 274-0014
 Email: mbacon@alaska.net

City of Unalaska
UNALASKA LIBRARY
AS-BUILT
 Unalaska, Alaska

- ROOM LIST**
- 01 ENTRY
 - 02 FRIEND'S AREA
 - 03 VESTIBULE
 - 04 JANITOR
 - 05 MENS ROOM
 - 06 WOMENS ROOM
 - 07 MEETING ROOM
 - 08 STORAGE
 - 09 BOLER ROOM
 - 10 TECH SUPPORT/SHIPPING
 - 11 COMM. AREA
 - 12 BREAK AREA
 - 13 LIBRARIAN
 - 14 COMPUTER AREA
 - 15 COPY ROOM
 - 16 CIRCULATION DESK
 - 17 LOBBY
 - 18 REFERENCE AREA
 - 19 YOUNG ADULT READING
 - 20 ADULT READING 2
 - 21 CHILDRENS AREA
 - 22 ADULT READING 1
 - 23 ALASKANA ROOM
 - 24 BOOK STACKS
 - 27
 - 201 FAN ROOM
 - 202 ELECTRICAL ROOM

FIRST FLOOR LIGHTING PLAN
 SCALE: 1/8" = 1"
 PLAN NORTH

- NOTES**
- (1) NOT USED.
 - (2) PROVIDE SEPARATE SWITCHING OF INNER AND OUTER LAMPS.
 - (3) SWITCHES FOR CORRIDOR/RESTROOM LIGHTS, INNER LAMPS AT CIRCULATION DESK AND G/75 AND H/75 FIXTURES, OUTER LAMPS AT CIRCULATION DESK, AND CONTACTOR FOR ALL OTHER LIGHTS IN OPEN LIBRARY, DESIGNATED BY NOTE (B).
 - (4) ALL EXTERIOR LIGHTING TO BE CONTROLLED BY PHOTOCELL AND 7 DAY TIMECLOCK THRU CONTACTOR. PHOTOCELL SHALL BE MOUNTED ON NORTH EXTERIOR WALL OF BUILDING JUST BELOW EAVE.
 - (5) WORK THIS AREA IS ADDITIVE ALTERNATE #1. UNDER BASE BID, NO LIGHTING IN THIS AREA. K-1/100 FIXTURES CIRCUITED AS SHOWN UNDER BASE BID.
 - (6) WORK THIS AREA IS ADDITIVE ALTERNATE #2. UNDER BASE BID, PROVIDE ONE THREE WAY SWITCH AT EACH DOOR. PROVIDE TWO TYPE C/75 FIXTURES CONNECTED TO CIRCUIT INDICATED FOR ALTERNATE LIGHTS, AND SWITCHED BY THREE WAY AT EACH DOOR. PROVIDE BOXES WITH BLANK COVERS FOR SWITCHES NOT INSTALLED UNDER BASE BID. CIRCUITING FOR BASE BID FIXTURES SHALL BE SAME AS FOR ADDITIVE ALTERNATE.
 - (7) WORK THIS AREA IS ADDITIVE ALTERNATE #2. UNDER BASE BID, PROVIDE ONE SWITCH AND TWO TYPE C/75 FIXTURES IN EACH NOTED SPACE. PROVIDE BOXES WITH BLANK COVERS FOR SWITCHES NOT INSTALLED UNDER BASE BID. CIRCUITING FOR BASE BID FIXTURES SHALL BE SAME AS FOR ADDITIVE ALTERNATE.
 - (8) PROVIDE UNSWITCHED CONDUCTOR FOR EMERGENCY LIGHTS. THRU CONTACTOR ADJACENT TO PANEL, 20 AMP 6-POLE INCLUDES ONE SPARE POLE.
 - (9) CONNECT PER EXTERIOR LIGHTING CONTROL DIAGRAM, SEE DETAIL #05-200.



ELECTRICAL AND FAN ROOM LIGHTING PLANS
 SCALE: 1/8" = 1"

LIVINGSTON STONE

ARCHITECTURAL
 INTERIOR DESIGN
 49 TH STREET, SUITE 100
 ANCHORAGE, ALASKA 99501-4900
 TEL: 907.562.2800
 FAX: 907.562.4900



Copyright © 1998 by Livingston Stone, Inc.
 All rights reserved. All parts of this drawing and the design it represents are instruments of service, and without the expressed, written permission of Livingston Stone, Inc. remain the exclusive property, and shall not be used, reproduced, or stored in any form. The "Livingston Stone, Inc." name and logo are trademarks of Livingston Stone, Inc.

PROJECT NO. 714.10
 DRAWN BY: TLC
 REVIEWED BY: DJM
 DATE: APRIL 10, 1998

TITLE
**LIGHTING
 FIRST FLOOR
 AND FAN ROOM**

SHEET NO.
E-101

Plot Time: 13:46:28
 Plot Date: 04/09/98
 DWG Name: TRACE\70333_E101.dwg

Универсал' Витаска

УНИВЕРСАЛ' ВІТАСКА

City of Ukraine

STONE
MILITATION



PROJECT NO. 71410

DRAWN BY T.C.

REVISION BY D.M.

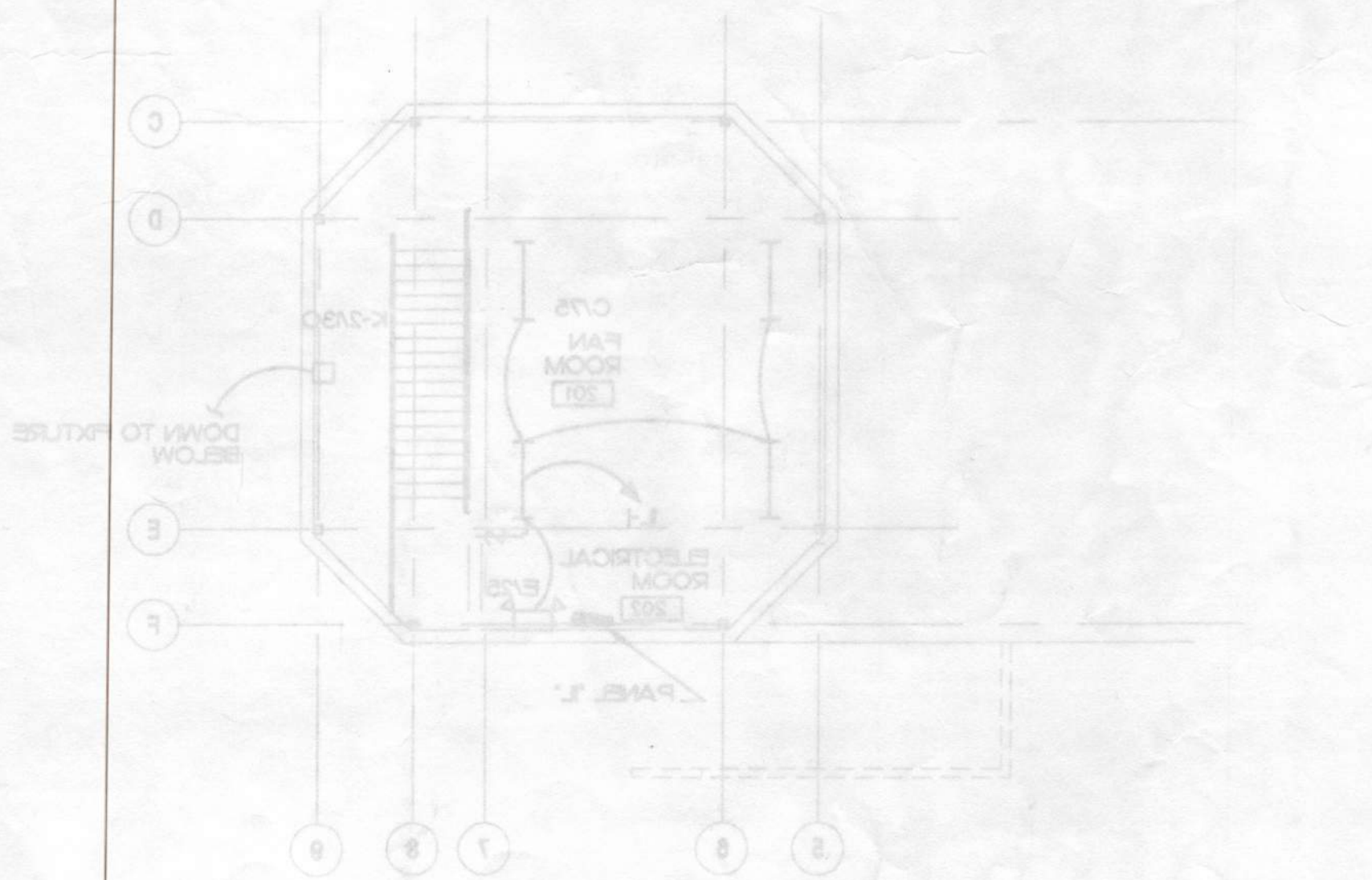
DATE APRIL 10, 1988

TITLE

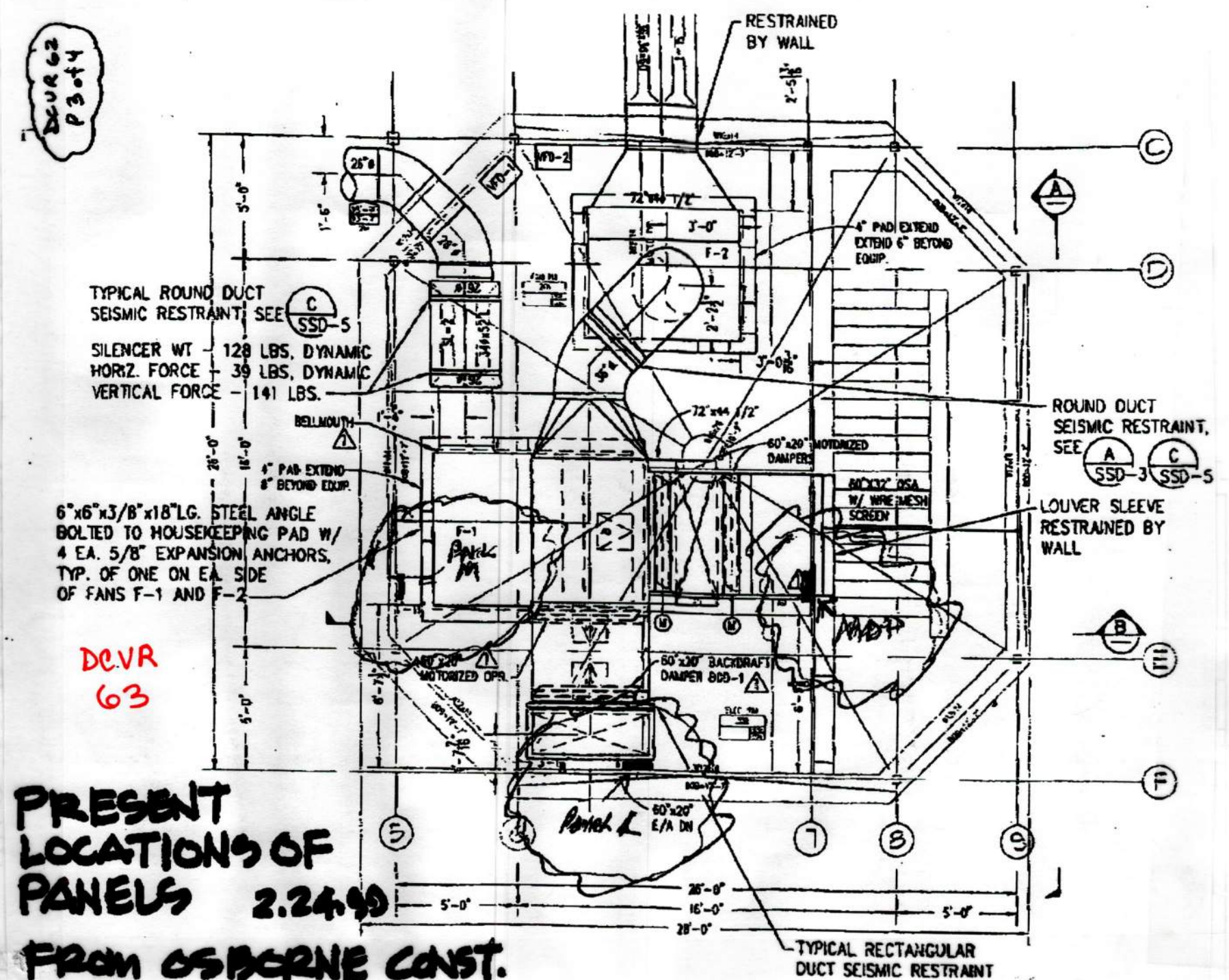
FIRST FLOOR
AND FAN ROOM

SHEET NO. E-101

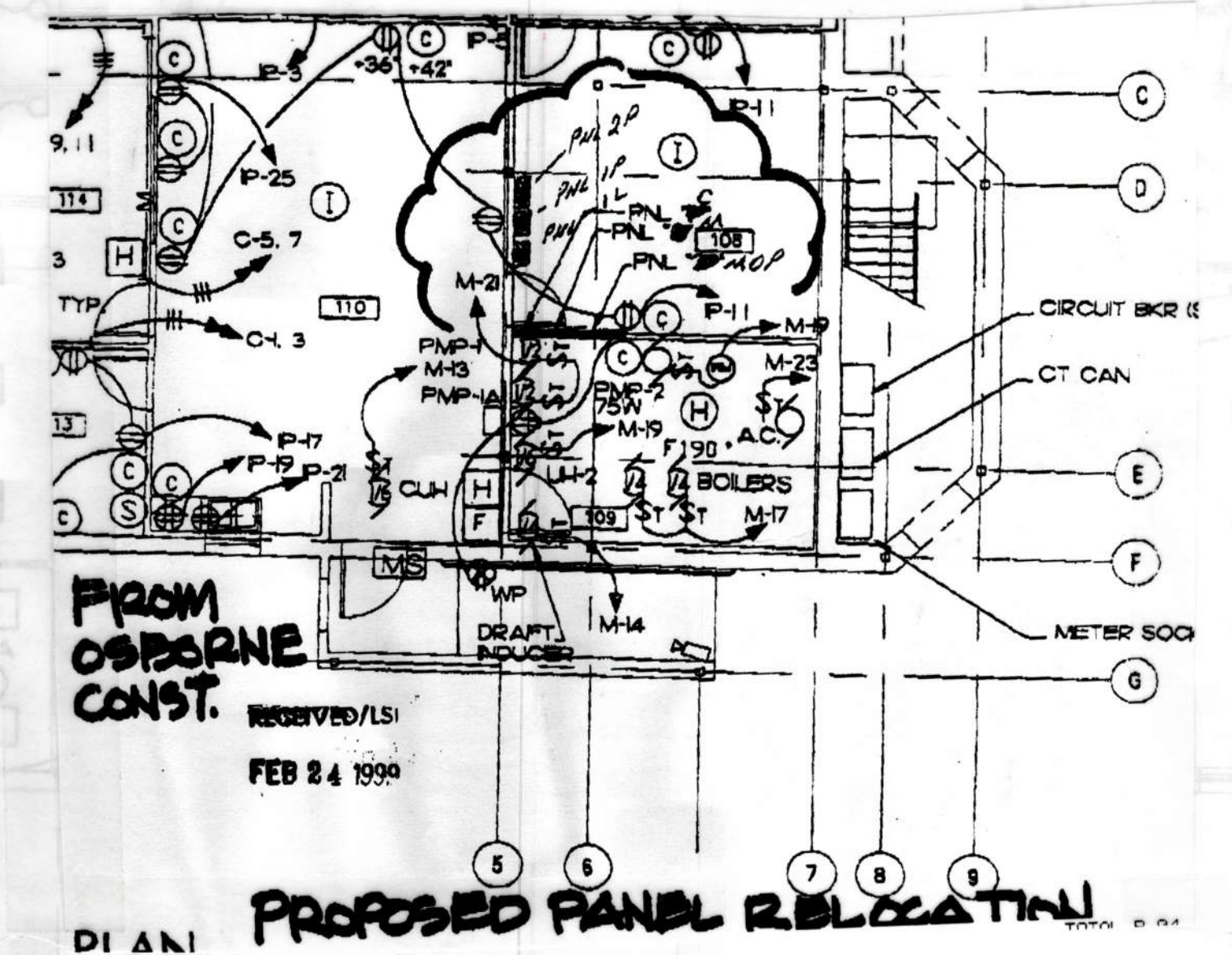
MANUFACTURERS NO.	DESCRIPTION	QTY	HT.	REMARKS
1
2
3
4
5
6
7
8
9
10
11
12
13
14
15
16
17
18
19
20
21
22
23
24
25
26
27
28
29
30



B ELECTRICAL AND FAN ROOM LIGHTING PLAN
SCALE: 1/8" = 1'



PRESENT LOCATIONS OF PANELS 2.24.90
FROM OSBORNE CONST.



PROPOSED PANEL RELOCATION
DIAGRAM

- NOTES
- NOT USED
 - PROVIDE SEPARATE SWITCHING OF INER AND OUTER LAMP
 - SWITCHES FOR CORRIDOR/STAIRWELL LIGHTS - INER LAMP AT CIRCULATION DECK AND OUTER LAMP AT CIRCULATION DECK
 - ALL EXTERIOR LIGHTING TO BE CONTROLLED BY PHOTOCELL AND 1 DAY
 - IN THIS AREA, KNOWN FIXTURES CONTROLLED AS SHOWN UNDER BASE BE
 - WORK THIS AREA IS ADDITIVE ALTERNATE #2 UNDER BASE BE. PROVIDE ONE THREE WAY SWITCH AT EACH DOOR. PROVIDE TWO TYPE CWS FIXTURES CONNECTED TO CIRCUIT RELOCATED FOR ALTERNATE LIGHTS AND SWITCHES BY THREE WAY AT EACH DOOR. PROVIDE BOXES WITH BLANK COVERS FOR SWITCHES NOT INSTALLED UNDER BASE BE.
 - WORK THIS AREA IS ADDITIVE ALTERNATE #2 UNDER BASE BE. PROVIDE ONE SWITCH AND TWO TYPE CWS FIXTURES IN EACH HOTTED SPACE. PROVIDE BOXES WITH BLANK COVERS FOR SWITCHES NOT INSTALLED UNDER BASE BE. PROVIDE ONE TYPE CWS FIXTURES SHALL BE SAME AS FOR ADDITIVE ALTERNATE #2.
 - PROVIDE SWITCHED CONDUCTOR FOR EMERGENCY LIGHTS - THRU CONDUCTOR ADJACENT TO PANEL. 20 AMP 4-POLE INCLUDES ONE SPARE POLE.
 - CONTACT PER EXTERIOR LIGHTING CONTROL DIAGRAM SEE DETAIL #02-200

SCALE: 1/8" = 1'

- ROOMS
- 01. ENTRY
 - 02. RECEPTION AREA
 - 03. WAITING ROOM
 - 04. WAITING ROOM
 - 05. WAITING ROOM
 - 06. WAITING ROOM
 - 07. WAITING ROOM
 - 08. WAITING ROOM
 - 09. WAITING ROOM
 - 10. WAITING ROOM
 - 11. WAITING ROOM
 - 12. WAITING ROOM
 - 13. WAITING ROOM
 - 14. WAITING ROOM
 - 15. WAITING ROOM
 - 16. WAITING ROOM
 - 17. WAITING ROOM
 - 18. WAITING ROOM
 - 19. WAITING ROOM
 - 20. WAITING ROOM
 - 21. WAITING ROOM
 - 22. WAITING ROOM
 - 23. WAITING ROOM
 - 24. WAITING ROOM
 - 25. WAITING ROOM
 - 26. WAITING ROOM
 - 27. WAITING ROOM
 - 28. WAITING ROOM
 - 29. WAITING ROOM
 - 30. WAITING ROOM
 - 31. WAITING ROOM
 - 32. WAITING ROOM
 - 33. WAITING ROOM
 - 34. WAITING ROOM
 - 35. WAITING ROOM
 - 36. WAITING ROOM
 - 37. WAITING ROOM
 - 38. WAITING ROOM
 - 39. WAITING ROOM
 - 40. WAITING ROOM
 - 41. WAITING ROOM
 - 42. WAITING ROOM
 - 43. WAITING ROOM
 - 44. WAITING ROOM
 - 45. WAITING ROOM
 - 46. WAITING ROOM
 - 47. WAITING ROOM
 - 48. WAITING ROOM
 - 49. WAITING ROOM
 - 50. WAITING ROOM

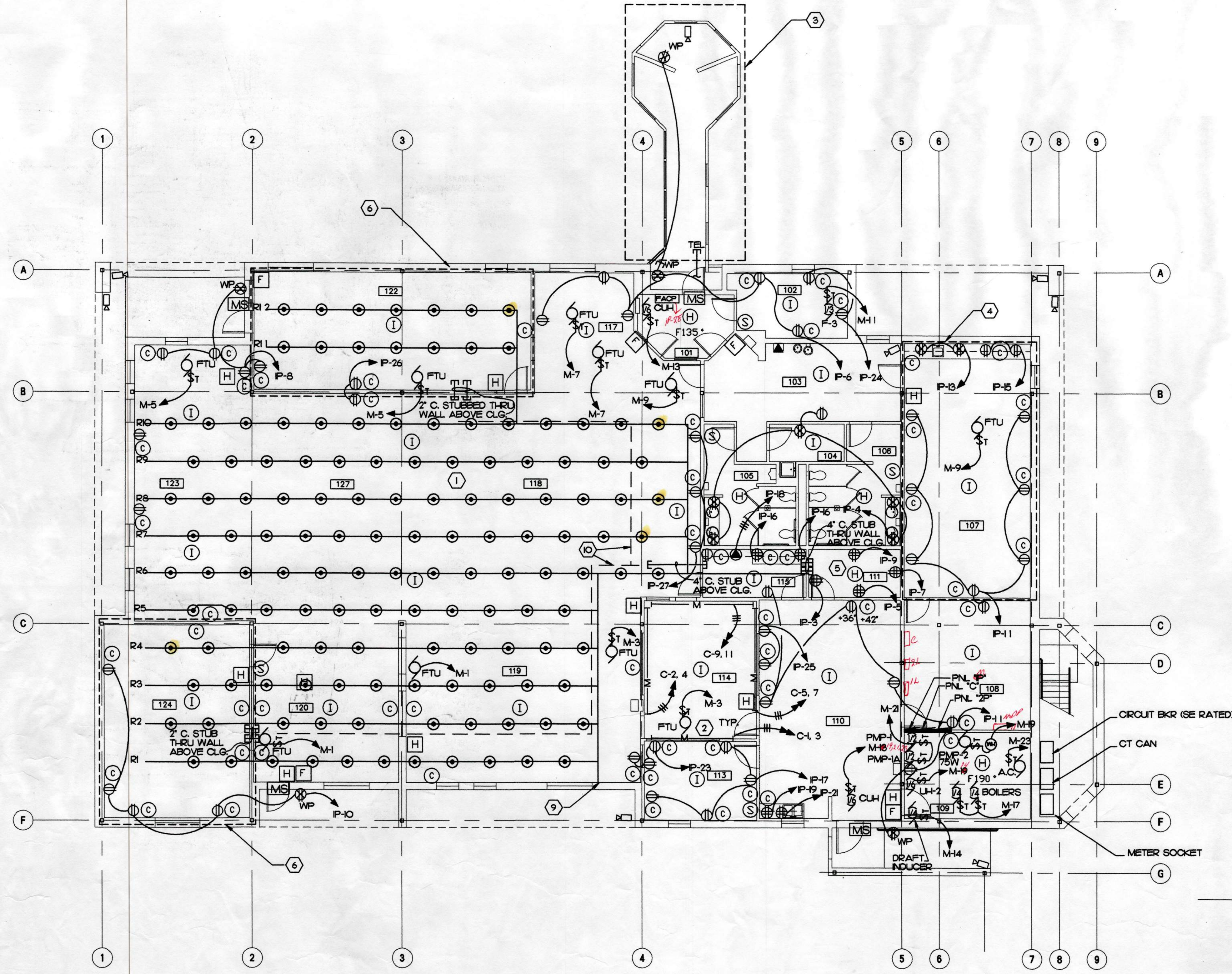


Copyright © 1998 by Livingston Stone, Inc. All rights reserved. All parts of this drawing and the design it represents are instruments of service, and without the expressed, written permission of Livingston Stone, Inc. remain its exclusive property, and shall not be used, reproduced, or stored in any form. The "Livingston Stone, Inc." name and logo are trademarks of Livingston Stone, Inc.

PROJECT NO. 714.10
 DRAWN BY: TLC
 REVIEWED BY: DJM
 DATE: APRIL 10, 1998

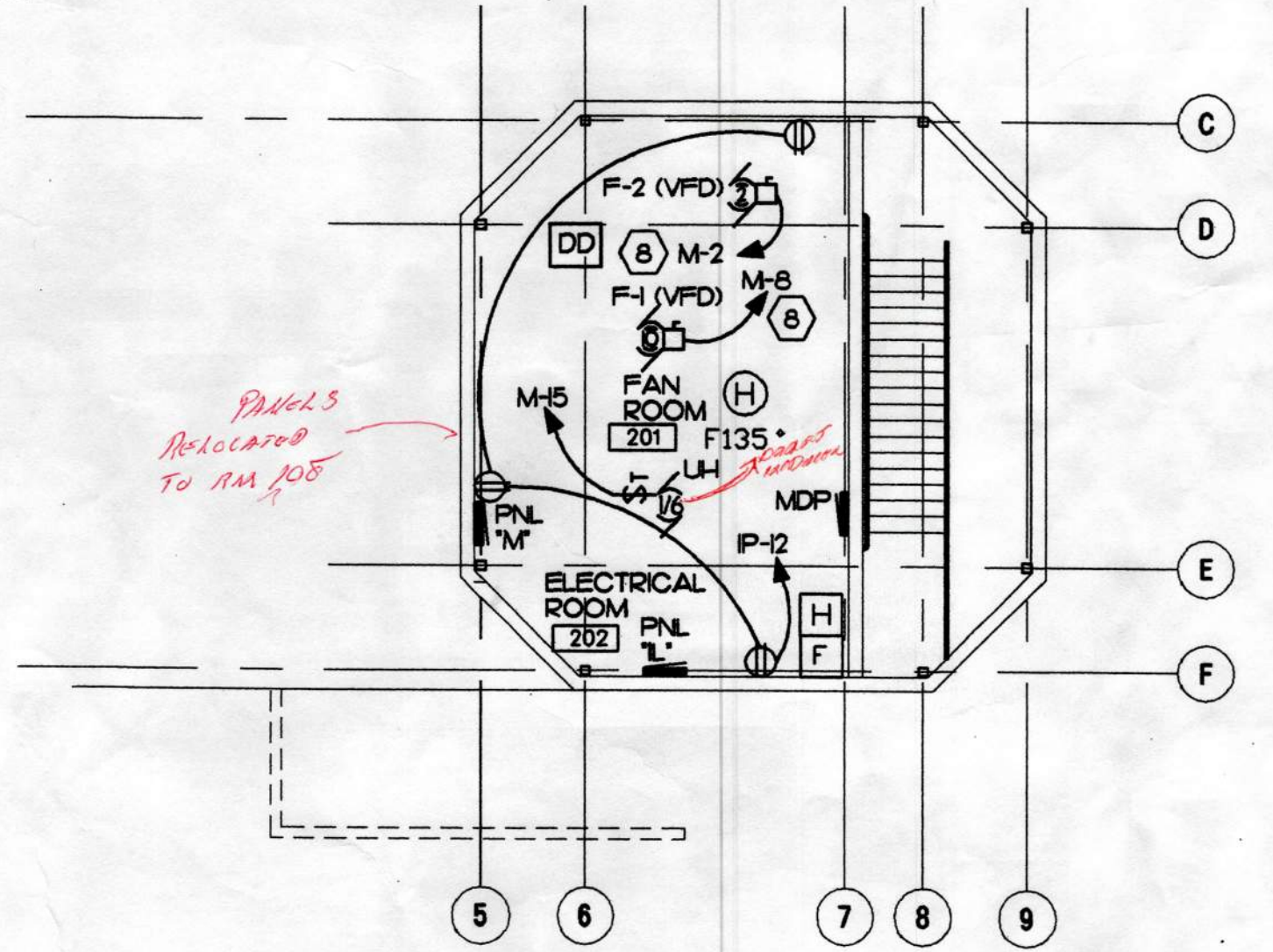
TITLE
**POWER + SIGNAL
 PLAN - FIRST FLOOR
 AND FAN ROOM**

SHEET NO.
E-102



NOTES

1. TRIPLE COMPARTMENT FLOOR DUCT SYSTEM WITH POWER, TELEPHONE, AND DATA COMPARTMENTS. PROVIDE SERVICE POINT FROM ALL THREE COMPARTMENTS AT EACH INDICATED FLOOR SERVICE LOCATION. LINES INDICATE DUCTS. RUN DUCT HEADER BACK TO TEL/DATA ROOM. SEE SPECIFICATION SECTION 1618. RUN POWER IN CONDUITS FROM PANEL TO TEL/DATA ROOM. HEADER - CIRCUIT AS SHOWN ON PANEL SCHEDULE 2P, ROW NUMBERS DENOTED BY "R#" AT WEST END OF ROW.
2. DUAL COMPARTMENT SMR TEL/DATA SHARE LOW POTENTIAL COMPARTMENT. WIREMOLD 4100 SERIES OR EQUAL. PROVIDE POWER RECEPTACLES 18" O.C. TEL/DATA COVER PLATES 18" O.C. MOUNTING HEIGHT SHALL BE 24" TO CENTER OF WIREMOLD.
3. WORK IN THIS AREA IS ADDITIVE ALTERNATE #1 UNDER BASE BID STUBOUT CONDUIT FOR POWER, TELEPHONE, AND CCTV AND CAP TO EACH.
4. WORK IN THIS AREA IS ADDITIVE ALTERNATE #2 UNDER BASE BID STUB CONDUITS INTO SPACE AND CAP. INSTALL ALL FIRE ALARM SYSTEM DEVICES UNDER BASE BID.
5. PROVIDE ONE 4 INCH AND ONE 2 INCH CONDUIT STUBBED 6" ABOVE FLOOR AND CAPPED ADJACENT TO TERMINAL BOARD. THESE CONDUITS SHALL EXTEND 5' OUTSIDE OF EAST WALL OF BUILDING AT A DEPTH OF 3 FEET. COORDINATE LOCATION WITH TEL/DATA. PROVIDE ONE #6 BC GROUND TIED INTO BUILDING GROUNDING NETWORK, AND TERMINATING ON TELEPHONE TERMINAL BOARD. TERMINAL BOARD SHALL BE 4'X4'X5/8" AC GRADE PLYWOOD PAINTED WHITE MOUNTED +4" A.F.F. TO BOTTOM MOUNT ON EAST WALL.
6. WORK IN THIS AREA IS ADDITIVE ALTERNATE #2 EXCEPT INSTALL UNDERFLOOR DUCT AND BOXES, AND ALL FIRE ALARM SYSTEM DEVICES UNDER BASE BID. FOR ALL OTHER DEVICES, STUB CONDUITS INTO SPACE AND CAP.
7. CCTV LOCATIONS ARE SHOWN FOR REFERENCE. PROVIDE BOXES AND CONDUITS ONLY FOR CABLES. PROVIDE AN ENERGIZED POWER J-BOX WITH BLANK COVER FOR POWER CONNECTIONS FROM CIRCUIT P-2. SEPARATE BOX FOR COAX, FC TO TEL/COMM ROOM.
8. THRU VFD. SEE MECHANICAL FOR LOCATION.
9. EXTEND DUCT TO FOUNDATION WALL AND CAP.
10. PROVIDE J-HOOKS 4' ON CENTER ALONG PATH INDICATED BY DASH-ED LINE. SEE SPECIFICATION SECTION 1674I FOR REQUIREMENTS.

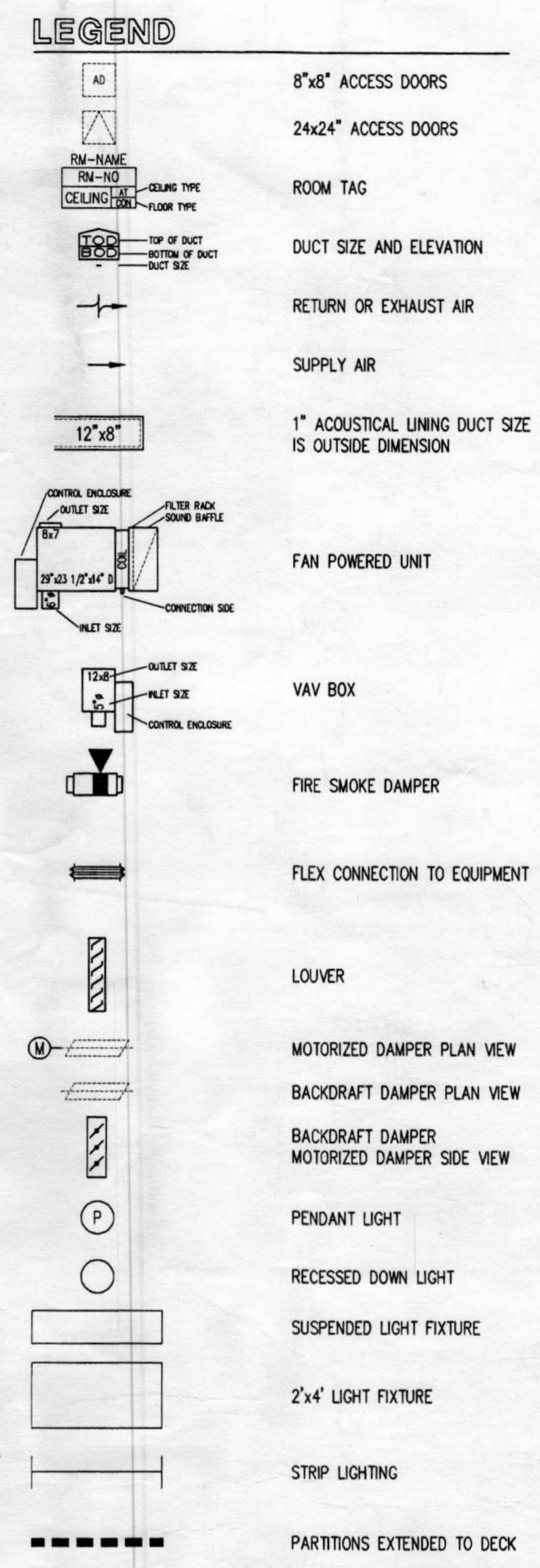
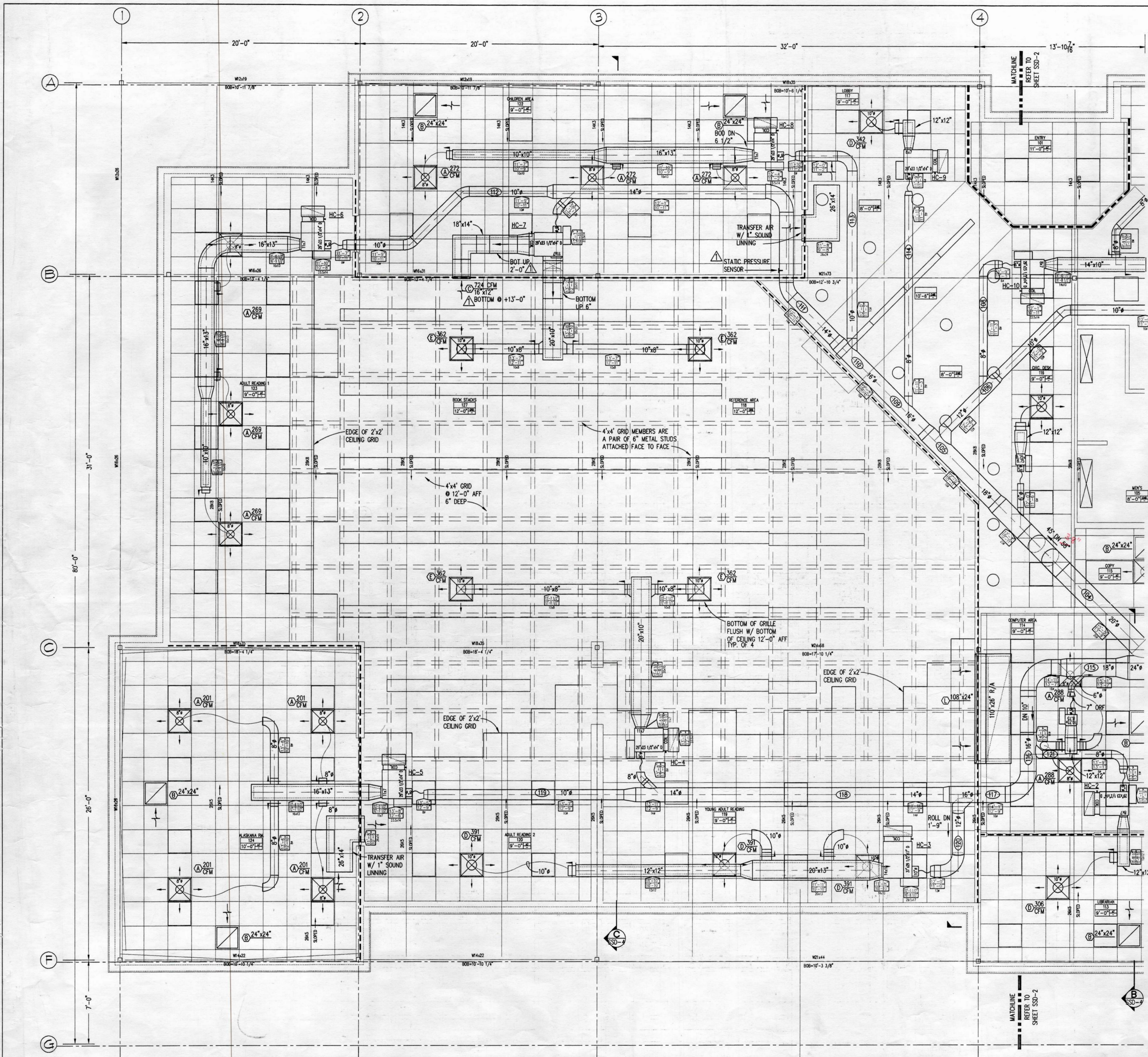


(B) FAN AND ELECTRICAL ROOM POWER & SIGNAL PLAN
 E-102 SCALE: 1/8" = 1"

(A) FIRST FLOOR POWER & SIGNAL PLAN
 E-102 SCALE: 1/8" = 1"
 PLAN NORTH

ROOM LIST

101	ENTRY
102	FRIEND'S AREA
103	VESTIBULE
104	JANITOR
105	MENS ROOM
106	WOMENS ROOM
107	MEETING ROOM
108	STORAGE
109	BOILER ROOM
110	TECH SUPPORT/SHIPPING COMM.
111	BREAK AREA
112	LIBRARIAN
113	COMPUTER AREA
114	COPY ROOM
115	CIRCULATION DESK
116	LOBBY
117	REFERENCE AREA
118	YOUNG ADULT READING
119	ADULT READING 2
120	CHILDRENS AREA
121	ADULT READING 1
122	ALASKANA ROOM
123	BOOK STACKS
124	FAN ROOM
201	FAN ROOM
202	ELECTRICAL ROOM



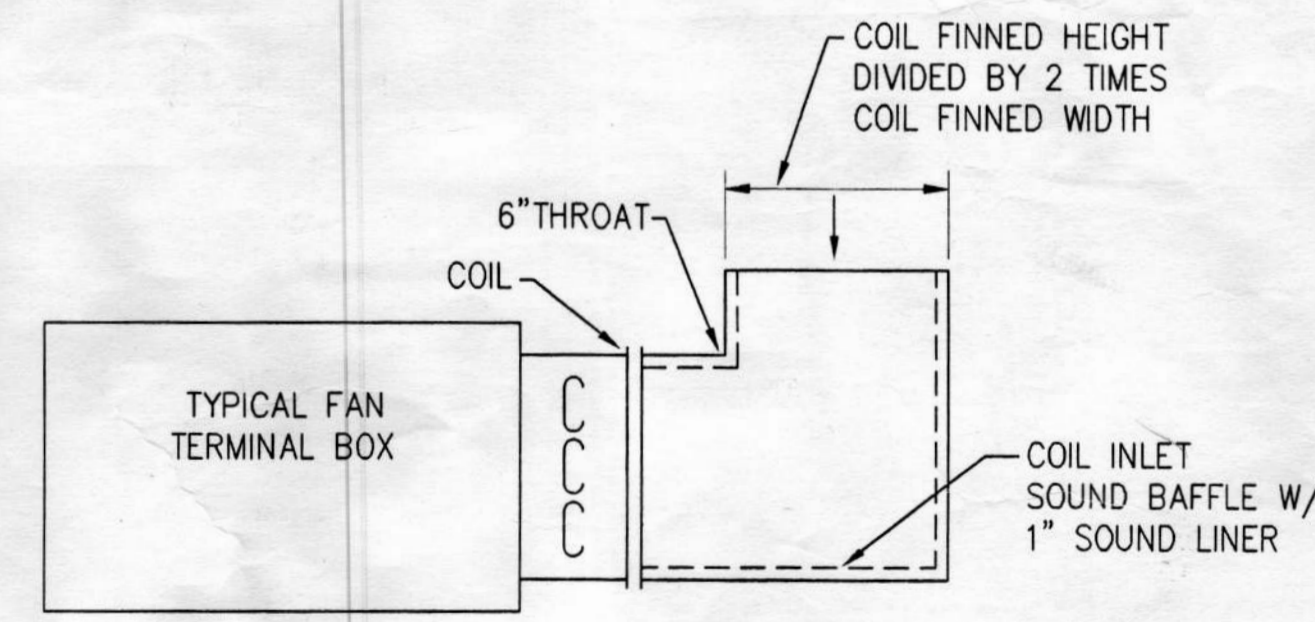
NOTES

ALL TRANSITIONS FLAT ON BOTTOM UNLESS NOTED OTHERWISE

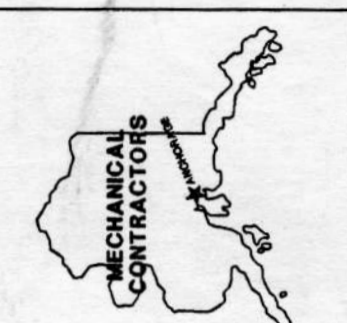
12" MAX. MED. PRESSURE FLEX TO VAV BOXES

10" MAX LOW PRESSURE FLEX

SUPPLY AIR DUCT DOWNSTREAM OF AIR TERMINAL BOXES #111 & #118 MUST BE RECTANGULAR ROUND IS NOT ACCEPTABLE



TYPICAL FAN TERMINAL BOX COIL INLET DUCT DETAIL
NO SCALE



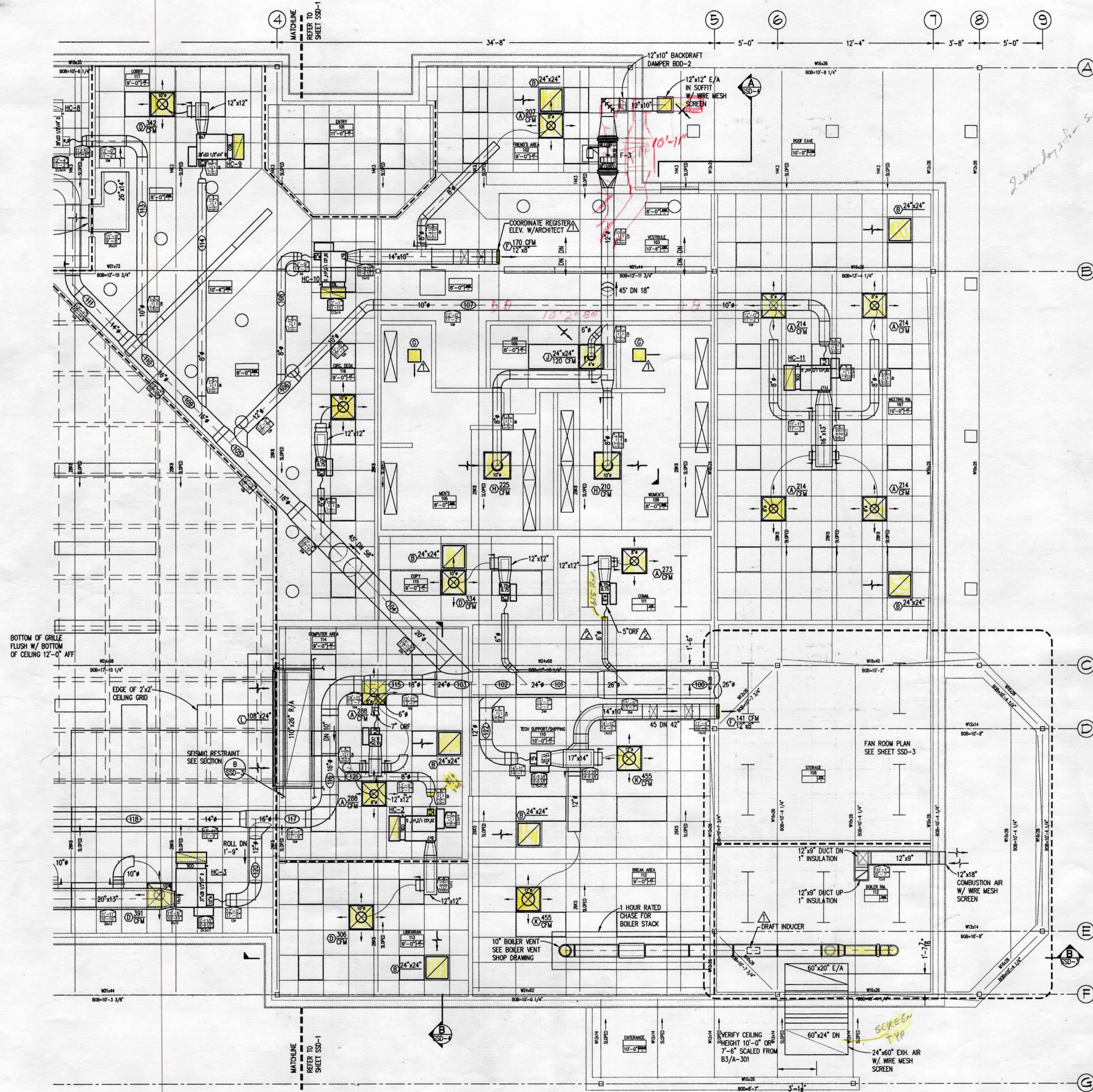
Alaska
Sheet Metal, Inc.
558 Whitney Road
Anchorage, Alaska 99501
(807) 279-9009 FAX (807) 278-0342

City of Unalaska
UNALASKA LIBRARY
Unalaska, Alaska

DATE: 10/22/96
DRAWN: JS
CHECKED: LARRY
CADD: JS
JOB NO: 98328
SCALE: 1/4" = 1'-0"
REVISIONS DATE
12/1/98, ENGR'S. COMMENTS

SHEET NUMBER
SSD-1
OF 5

82286



LEGEND

	8'x8' ACCESS DOORS
	24'x24' ACCESS DOORS
	ROOM TAG
	DUCT SIZE AND ELEVATION
	RETURN OR EXHAUST AIR
	SUPPLY AIR
	12'x8' ACOUSTICAL LINING DUCT SIZE IS OUTSIDE DIMENSION
	FAN POWERED UNIT
	VAV BOX
	FIRE SMOKE DAMPER
	FLEX CONNECTION TO EQUIPMENT
	LOUVER
	MOTORIZED DAMPER PLAN VIEW
	BACKDRAFT DAMPER PLAN VIEW
	BACKDRAFT DAMPER MOTORIZED DAMPER SIDE VIEW
	PENDANT LIGHT
	RECESSED DOWN LIGHT
	SUSPENDED LIGHT FIXTURE
	2'x4' LIGHT FIXTURE
	STRIP LIGHTING
	PARTITIONS EXTENDED TO DECK

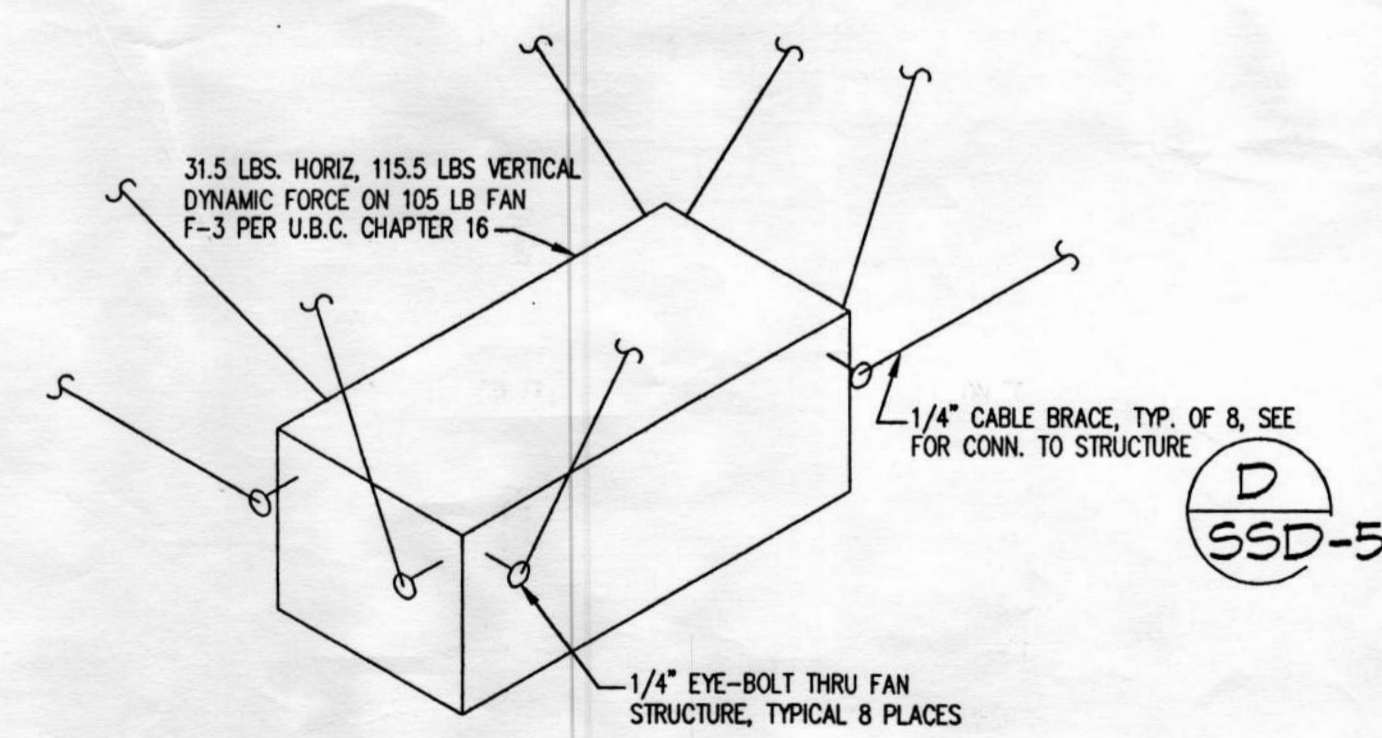
NOTES

ALL TRANSITIONS FLAT ON BOTTOM UNLESS NOTED OTHERWISE

12" MAX. MED. PRESSURE FLEX TO VAV BOXES

10" MAX LOW PRESSURE FLEX

SUPPLY AIR DUCT DOWNSTREAM OF AIR TERMINAL BOXES #111 & #118 MUST BE RECTANGULAR ROUND IS NOT ACCEPTABLE



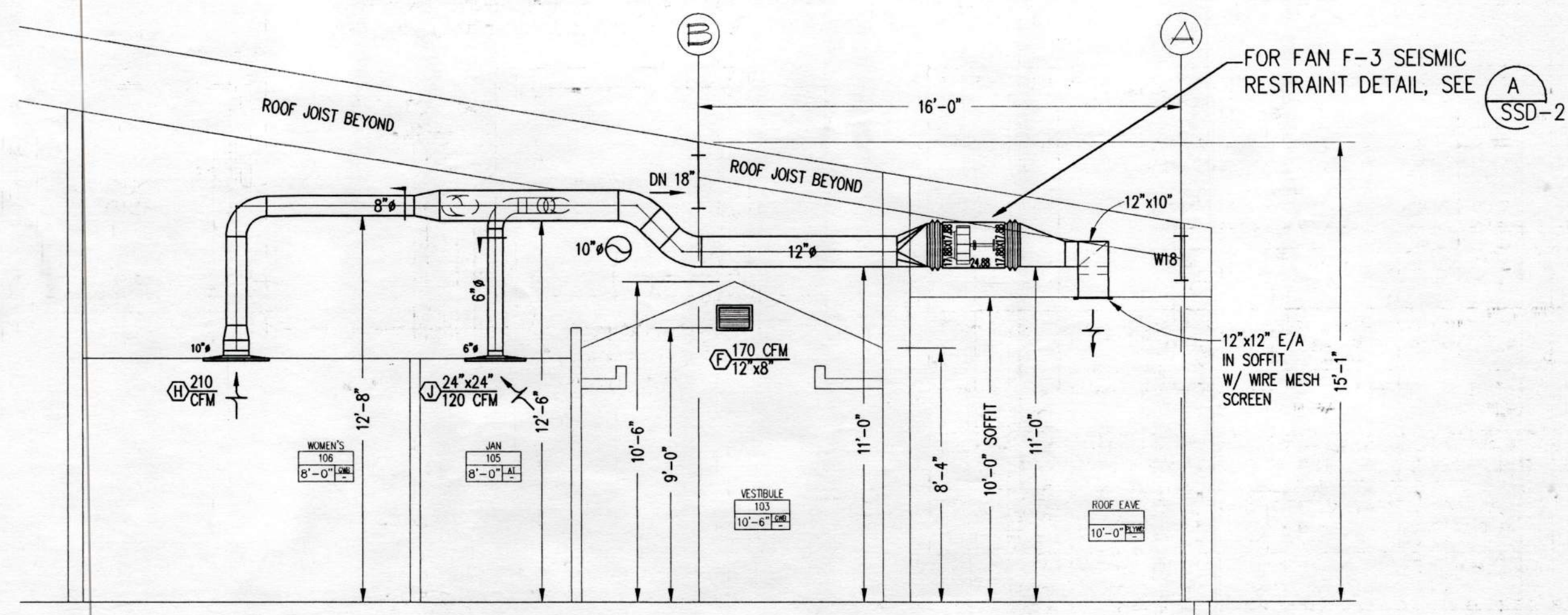
FAN F-3 SEISMIC RESTRAINT DETAIL A SSD-2

Alaska Sheet Metal, Inc.
 566 Whitney Road
 Anchorage, Alaska 99501
 (807) 278-6008 FAX (807) 278-6342

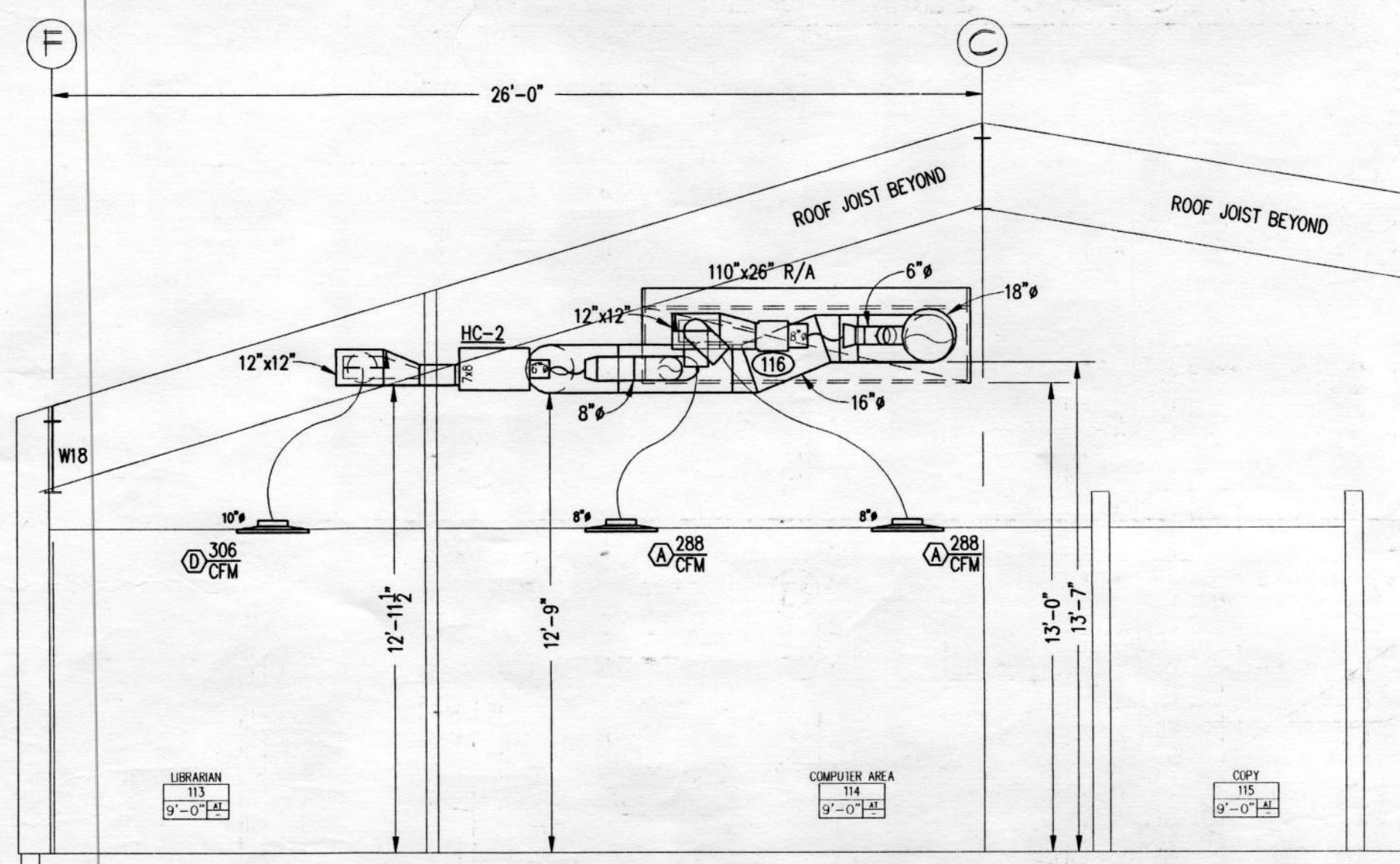
City of Unalaska
UNALASKA LIBRARY
 Unalaska, Alaska

DATE: 10/22/98
 DRAWN: JS
 CHECKED: LARRY
 CADD: JS
 JOB NO: 98328
 SCALE: 1/4" = 1'-0"
 REVISIONS: DATE
 12/1/98, ENGR'S COMMENTS
 1/11/99, REVISED COMPUTER RUN

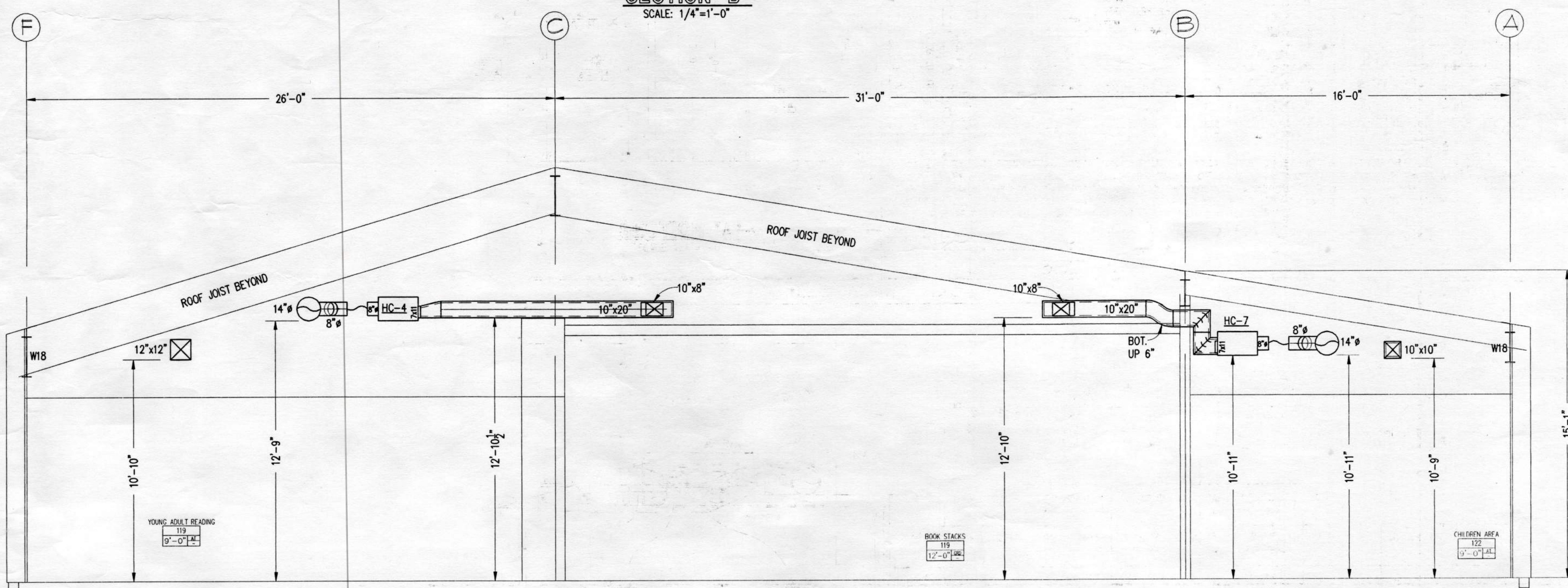
SHEET NUMBER
SSD-2
 OF 5



SECTION A
SCALE: 1/4"=1'-0"



SECTION B
SCALE: 1/4"=1'-0"



SECTION C
SCALE: 1/4"=1'-0"

FAN SCHEDULE									
SYMBOL	LOCATION	MANFACT.	MODEL	CFM	TSP	RPM	USE	MOTOR HP/VOLTS/PH	REMARKS
F-1	FAN ROOM	TRANE	MCCA021	8312	4.50	1290	S/A	10/200/3	WITH MAGNETEK VARIABLE FREQUENCY DRIVE, VFD-1 208V/3PH
F-2	FAN ROOM	TRANE	MCCA021	7369	0.75	742	R/A	2/200/3	WITH MAGNETEK VARIABLE FREQUENCY DRIVE, VFD-2 208V/3PH
F-3	ROOM 102	ACME	XB120E1	555	0.50	1224	E/A	1/4/115/1	WITH HANGING SPRING ISOLATORS, MOTOR WEATHER COVER

FILTER SCHEDULE					
SYMBOL	LOCATION	MANFACT.	MODEL	SIZE	REMARKS
FF-1	FAN ROOM	FARR	30/30	20"x20"x2"D & 24"x20"x2"D	3 EACH
FF-1	FAN ROOM	FARR	100/PH	20"x20"x12"D & 24"x20"x12"D	3 EACH

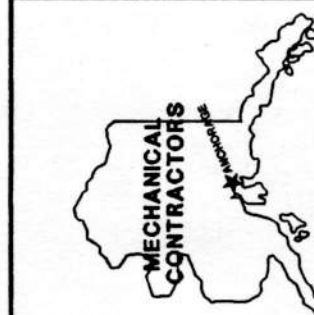
BACKDRAFT DAMPER SCHEDULE					
SYMBOL	LOCATION	MANFACT.	MODEL	SIZE	REMARKS
BDD-1	FAN ROOM	RUSKIN	CB02	60"x20"	EXHAUST AIR, CHANNEL FRAME, AIR FLOW HORIZONTAL
BDD-2	ROOM 102	RUSKIN	CB02	12"x10"	EXHAUST AIR, CHANNEL FRAME, AIR FLOW HORIZONTAL

SILENCER SCHEDULE								
SYMBOL	LOCATION	MANFACT.	MODEL	CFM	P.D.	FPM	USE	REMARKS
SL-1	ROOM 107	VBRO-ACOUSTICS	24 RPB-NO	7369	0.13	819	R/A	36"x36"x60"L
SL-2	FAN ROOM	VBRO-ACOUSTICS	26 CGB-2	8312	0.08	2254	R/A	34"x52"L, 26" CONNECTION

VAV AND HEATING COIL SCHEDULE									
BOX	MODEL	INLET SIZE	OUTLET SIZE	COIL	LOCATION	CFM	COIL CONN.	USE	REMARKS
100	SDR	5"	8 3/4"x8 3/4"		ROOM 111	273		S&DRIVE	
101	SDR	6"	8 3/4"x8 3/4"		ROOM 115	334		S&DRIVE	
104	SDR	6"	8 3/4"x8 3/4"		ROOM 116	338		S&DRIVE	
107	VFR-HC	8"	11"x7"	HC-11	ROOM 107	854	RIGHT	1 1/2" STRAIGHT	
108	VFR-HC	6"	8"x7"	HC-10	ROOM 117	377	RIGHT	1 1/2" STRAIGHT	
111	VFR-HC	8"	11"x7"	HC-7	ROOM 122	724	RIGHT	1 1/2" STRAIGHT	
112	VFR-HC	8"	11"x7"	HC-6	ROOM 123	808	RIGHT	1 1/2" STRAIGHT	
113	VFR-HC	8"	11"x7"	HC-8	ROOM 122	816	RIGHT	1 1/2" STRAIGHT	
114	VFR-HC	6"	8"x7"	HC-9	ROOM 117	342	RIGHT	1 1/2" STRAIGHT	
115	SDR	8"	10 3/4"x8 3/4"		ROOM 114	575		S&DRIVE	
118	VFR-HC	8"	11"x7"	HC-4	ROOM 119	724	RIGHT	1 1/2" STRAIGHT	
119	VFR-HC	8"	11"x7"	HC-5	ROOM 120	804	RIGHT	1 1/2" STRAIGHT	
120	VFR-HC	10"	14"x10"	HC-3	ROOM 119	1127	RIGHT	1 1/2" STRAIGHT	
121	VFR-HC	6"	8"x7"	HC-2	ROOM 114	306	RIGHT	1 1/2" STRAIGHT	
122	SDR	10"	12 3/4"x11 1/4"		ROOM 110	1051		S&DRIVE	

GRILLES REGISTERS & DIFFUSERS SCHEDULE										
SYMBOL	QTY.	MANFACT.	MODEL	MOUNT	NECK SIZE	FACE SIZE	USE	MATERIAL	FINISH	REMARKS
(A)	18	TITUS	TMS-AA	LAY-IN	8"	24"x24"	S/A	ALUMINUM	WHITE	
(B)	9	TITUS	PXP-AA	LAY-IN	-	24"x24"	R/A	ALUMINUM	WHITE	
(C)	1	PRICE	SDS	SURFACE	16"x12"	16"x12"	R/A	ALUMINUM	WHITE	
(D)	7	TITUS	TMS-AA	LAY-IN	10"	24"x24"	S/A	ALUMINUM	WHITE	
(E)	4	TITUS	TMS-AA	LAY-IN	10"	24"x24"	S/A	ALUMINUM	WHITE	SQUARE TO ROUND ADAPTER
(F)	2	TITUS	1700L-07	SURFACE	12"x8"	12"x8"	S/A	ALUMINUM	WHITE	
(G)	1	TITUS	8F	SURFACE	12"x12"	12"x12"	S/A	ALUMINUM	WHITE	
(H)	2	TITUS	PAR-AA-08D	SURFACE	10"	16"x16"	E/A	ALUMINUM	WHITE	WITH MODEL AG75 OPPOSED BLADE DAMPER
(J)	1	TITUS	PAR-AA-08D	SURFACE	6"	24"x24"	E/A	ALUMINUM	WHITE	WITH MODEL AG75 OPPOSED BLADE DAMPER, LAY-IN FOR ROOM 105
(K)	2	TITUS	TMS-AA	LAY-IN	12"	24"x24"	S/A	ALUMINUM	WHITE	
(L)	1	TITUS	33RL	SURFACE	108"x24"	108"x24"	R/A	ALUMINUM	WHITE	

AIR MIXER SCHEDULE					
SYMBOL	LOCATION	MANFACT.	CFM	SIZE	REMARKS
AM-1	FAN ROOM	KEES	2770	20"x20"	3 EACH



Superior
Plumbing & Heating, Inc.
6861 Elm Street
Anchorage, Alaska 99507
(907) 348-8572 FAX (907) 348-4480

City of Unalaska
UNALASKA LIBRARY
Unalaska, Alaska

DATE: 10/22/98
DRAWN: JS
CHECKED: LARRY
CADD: JS
JOB NO: 98328
SCALE: 1/4"=1'-0"
REVISIONS: DATE
12/1/98, ENGR'S. COMMENTS

SHEET NUMBER
SSD-4
OF 5

98328

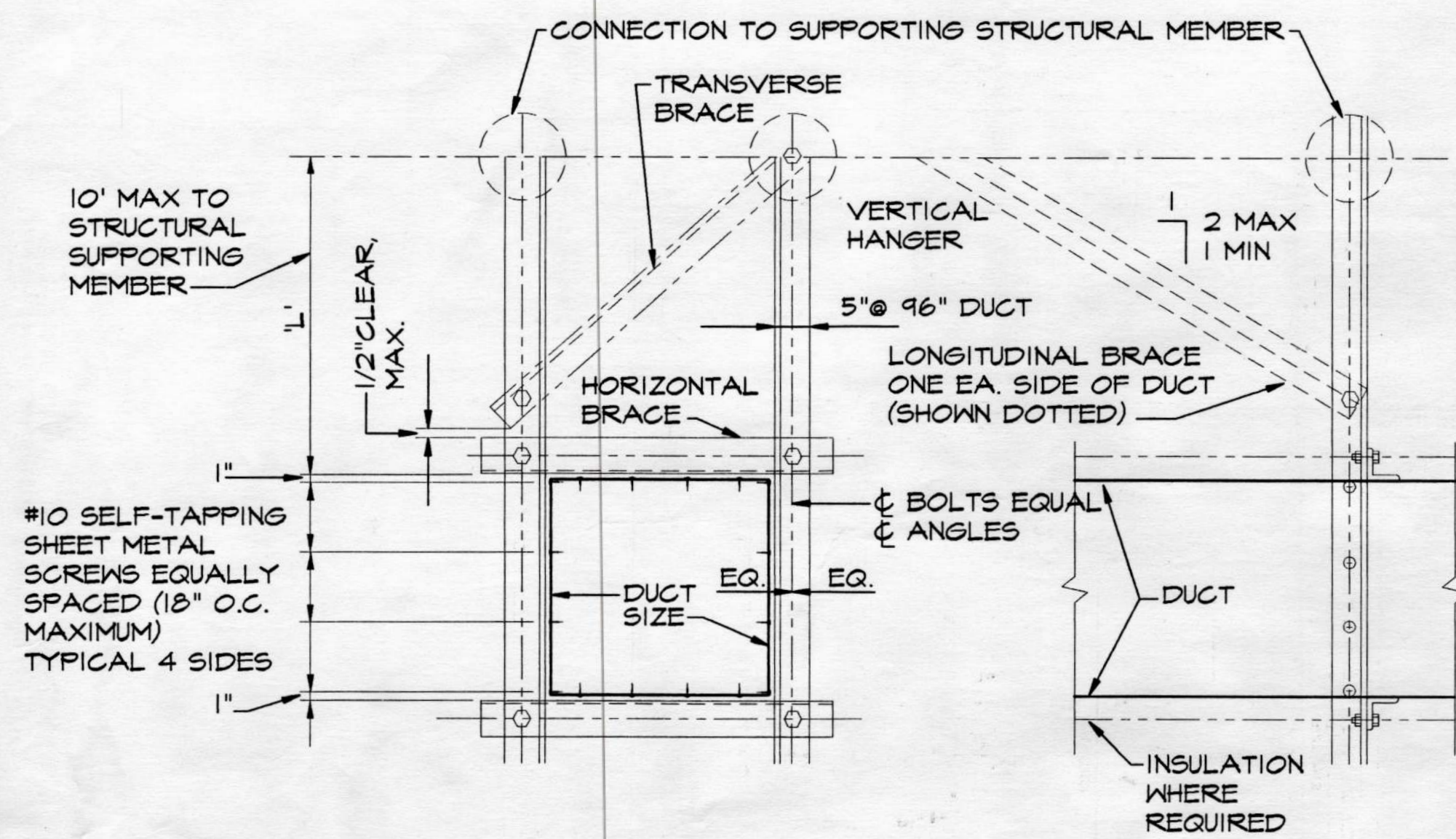


Table 5-2a. Center Bracing For Rectangular Ducts, SHL A L=10'

DUCT SIZE WxD (3) (IN)	VERTICAL HANGERS	DIAGONAL BRACES (CABLE SIZE)	HORIZONTAL BRACES	LONGITUDINAL BRACES (CABLE SIZE)	CONNECTION TYPE TO STRUCTURAL MEMBER (1) CONNECTION LEVEL (4)			MAX. WT. PER FOOT (2) (LBS)	
30x30	L4x4x1/2GA	L4x4x1/4GA (1/4\"CABLE)	L2x2x1/2GA	2-1/2\" PIPE (1/4\"CABLE)	3/8	C	C	D	17
42x42	L4x4x1/2GA	L4x4x1/4GA (1/4\"CABLE)	L2-1/2x2-1/2x1/2GA	2-1/2\" PIPE (1/4\"CABLE)	3/8	C	D	E	29
54x54	L3x3x1/4	L4x4x1/2GA (1/4\"CABLE)	L2-1/2x2-1/2x1/2GA	2-1/2\" PIPE (1/4\"CABLE)	1/2	C	E	F	46
60x60	L3x3x1/4	L4x4x1/2GA (1/4\"CABLE)	L2-1/2x2-1/2x1/2GA	2-1/2\" PIPE (1/4\"CABLE)	1/2	D	E	F	54
84x84	L5x3x1/4	L4x4x1/2GA (3/8\"CABLE)	L2-1/2x2-1/2x1/2GA	2-1/2\" PIPE (3/8\"CABLE)	5/8	E	F	H	103
96x96	L5x3x3/8	L4x4x1/2GA (3/8\"CABLE)	L2-1/2x2-1/2x1/2GA	2-1/2\" PIPE (3/8\"CABLE)	5/8	F	B	H	129
54-28	L4x4x1/2GA	L4x4x1/2GA (1/4\"CABLE)	L2-1/2x2-1/2x1/2GA	2-1/2\" PIPE (1/4\"CABLE)	1/2	F	E	F	34
60x30	L4x4x1/2GA	L4x4x1/2GA (1/4\"CABLE)	L2-1/2x2-1/2x1/2GA	2-1/2\" PIPE (1/4\"CABLE)	1/2	E	F	G	39
84x42	L3x3x1/4	2\" PIPE (3/8\"CABLE)	L2-1/2x2-1/2x1/2GA	2-1/2\" PIPE (3/8\"CABLE)	5/8	E	H	H	74
96x48	L4x4x1/4	2\" PIPE (3/8\"CABLE)	L2-1/2x2-1/2x1/2GA	2-1/2\" PIPE (3/8\"CABLE)	3/4	F	H	H	97
108x54	L4x4x1/4	2-1/2\" PIPE (1/2\"CABLE)	L2-1/2x2-1/2x1/2GA	2-1/2\" PIPE (1/2\"CABLE)	3/4	G	H	(6)	110
120x60	L5x3x1/4	2-1/2\" PIPE (1/2\"CABLE)	L2-1/2x2-1/2x1/2GA	2-1/2\" PIPE (1/2\"CABLE)	7/8	H	H	(6)	121

- NOTES:
- SEE TABLE 8-1 FOR "CONNECTION TYPE" TO STRUCTURAL SUPPORTING MEMBERS.
 - MAXIMUM WEIGHT OF DUCT OR COMBINATIONS OF DUCTS PER LINEAR FOOT. FOR DUCTS WEIGHING MORE THAN THE MAX. WT. PER FOOT, USE THE NEXT HIGHER DUCT SIZE.
 - THE DUCTS' MAXIMUM DIMENSIONS SHALL GOVERN WHAT BRACING IS REQUIRED. EXAMPLE: A 72' x 30' DUCT SHALL BE BRACED LIKE AN 84' x 42' DUCT.

RECTANGULAR DUCT SEISMIC RESTRAINT DETAILS

SCALE: NONE

A
SSD-5

Table 8-1. Schedule for Typical Connections to Structural Supporting Members (1)

TYPE	MAX. LOAD CAPACITY (LBS)	EXPANSION ANCHORS TO CONCRETE	MACHINE BOLT END OF BRACE	SPREADER SIZE	MACHINE BOLT AT WOOD	HOLLOW CORE FLANK ROD	ANGLE TO SUPPORTING STRUCTURAL MEMBER
A	1040	1/2"	3/8"	C4x5.4	1/2"	3/8"	L3-1/2x2-1/2x3/8x0'-3" LLH
B	1415	5/8"	3/8"	C4x5.4	5/8"	3/8"	L5x3x3/8x0'-3" LLH
C	1586	2-1/2"	1/2"	C5x6.7	3/4"	3/8"	2-L4x3x3/8x0'-4" LLH
D	2020	2-5/8"	1/2"	C6x8.5	(8)	1/2"	2-L5x3x3/8x0'-4" LLH
E	2870	2-3/4"	5/8"	C8x11.5	(8)	1/2"	2-L6x3-1/2x3/8x0'-4" LLH
F	4600	4-5/8"	3/4"	C9x13.4	(8)	(8)	2-L5x3x3/8x0'-10" LLH
G	7040	4-3/4"	7/8"	C10x15.3	(8)	(8)	2-L6x3-1/2x1/2x0'-11-1/2" LLH
H	9240	4-7/8"	1"	C12x20.7	(8)	(8)	2-L8x4x3/4x1'-1-1/2" LLH

RECTANGULAR DUCT SEISMIC RESTRAINT DETAIL

SCALE: NONE

B
SSD-5

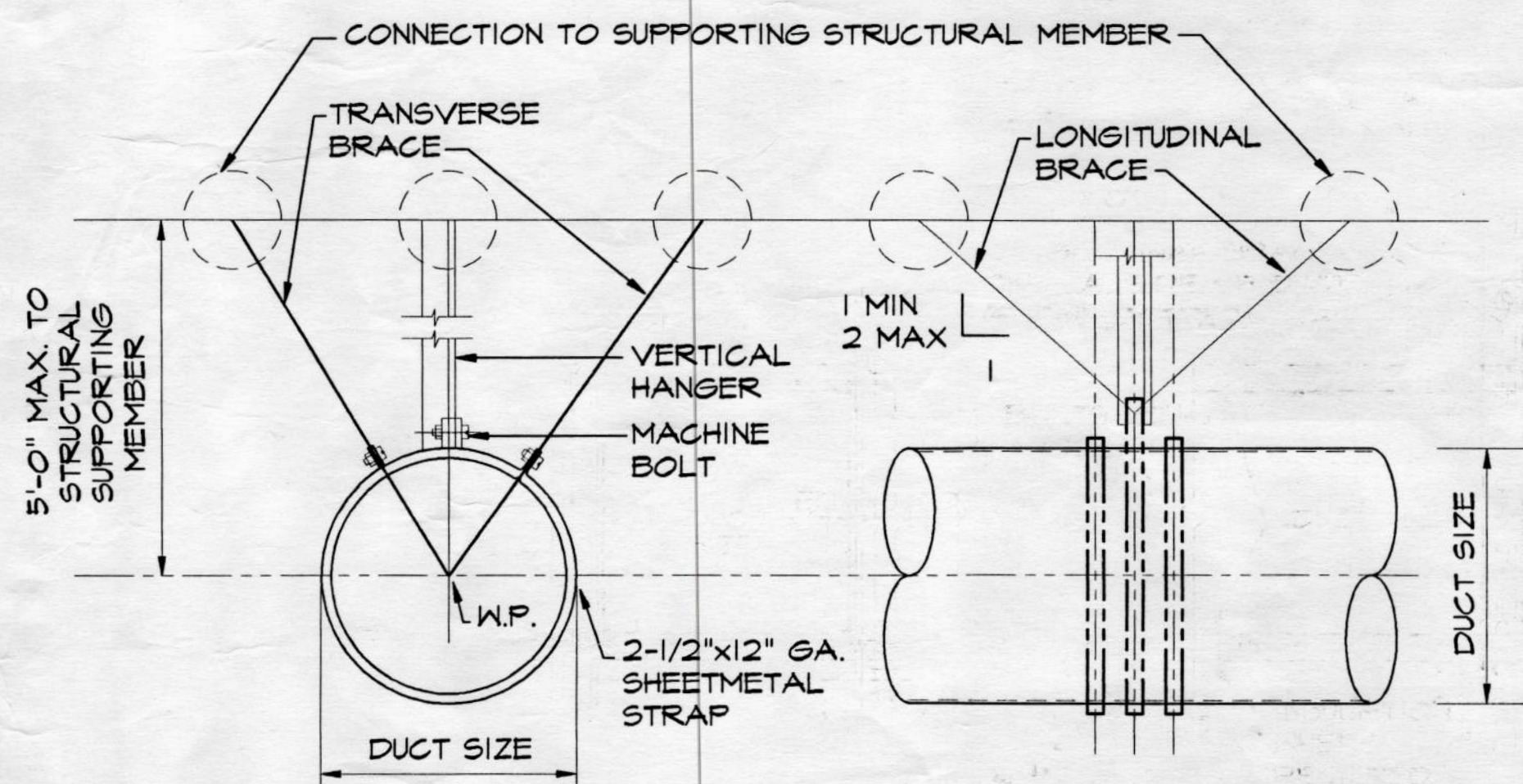


Table 5-3. Bracing For Round Ducts, SHL A

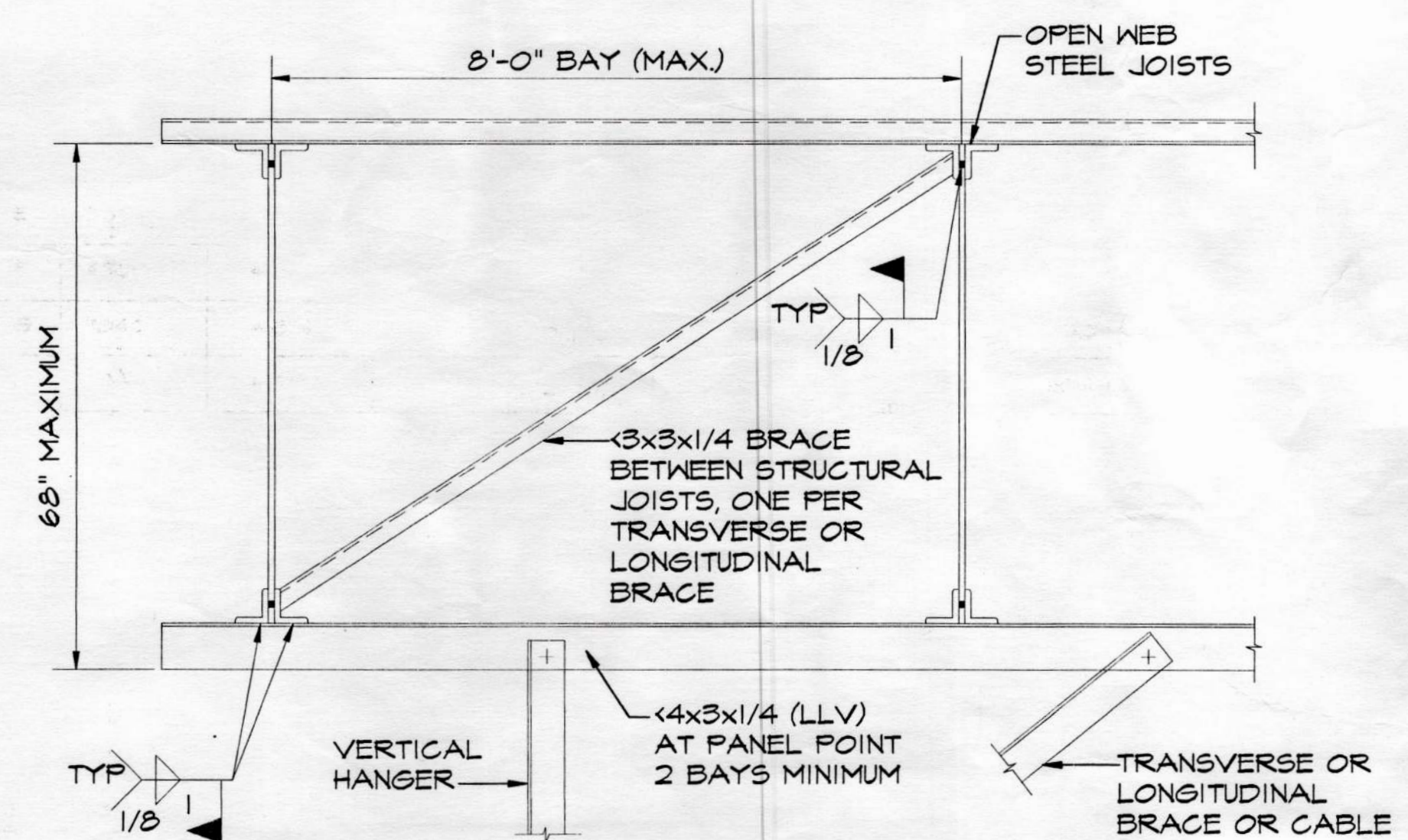
DUCT SIZE (3) (IN)	VERTICAL HANGERS	DIAGONAL BRACES (CABLE SIZE)	BOLT SIZE (IN)	CONNECTION TYPE TO STRUCTURAL MEMBER (1) CONNECTION LEVEL (4)			MAX. WT. PER FOOT (2) (LBS)	REMARKS
				1	2	3		
28	L2x2x1/6GA	L2x2x1/6GA (1/4\"CABLE)	3/8	A	A	B	12	SINGLE HANGER
36	L2x2x1/6GA	L2x2x1/6GA (1/4\"CABLE)	3/8	A	B	C	16	SINGLE HANGER
48	L2x2x1/6GA	L2x2x1/6GA (1/4\"CABLE)	3/8	B	C	D	21	SINGLE HANGER
60	L3x3x1/6GA	L4x4x1/4GA (1/4\"CABLE)	3/8	D	D	E	34	DOUBLE HANGER
84	L3x3x1/6GA	L4x4x1/4GA (1/4\"CABLE)	1/2	F	F	G	69	DOUBLE HANGER

- NOTES:
- SEE TABLE 8-1 FOR "CONNECTION TYPE" TO STRUCTURAL SUPPORTING MEMBERS.
 - MAXIMUM WEIGHT OF DUCT OR COMBINATIONS OF DUCTS PER LINEAR FOOT. FOR DUCTS WEIGHING MORE THAN THE MAX. WT. PER FOOT, USE THE NEXT HIGHER DUCT SIZE.
 - THE DUCTS' MAXIMUM DIMENSIONS SHALL GOVERN WHAT BRACING IS REQUIRED. EXAMPLE: A 52' DUCT SHALL BE BRACED LIKE A 60' DUCT. IF EXACT SIZE IS NOT LISTED, USE NEXT HIGHER SIZE.

ROUND DUCT SEISMIC RESTRAINT DETAILS

SCALE: NONE

C
SSD-5



TYPICAL CONNECTION TO STRUCTURE

SCALE: NONE

D
SSD-5



Alaska
Sheet Metal, Inc.
566 Whitney Road
Anchorage, Alaska 99501
(807) 278-0008 FAX (807) 278-3842

City of Unalaska
UNALASKA LIBRARY
Unalaska, Alaska

DATE: 10/22/98
DRAWN: JT
CHECKED: LARBY
CADD:
JOB NO: 98327
SCALE: 1/4" = 10"
REVISIONS | DATE

SHEET NUMBER
SSD-5
OF 5