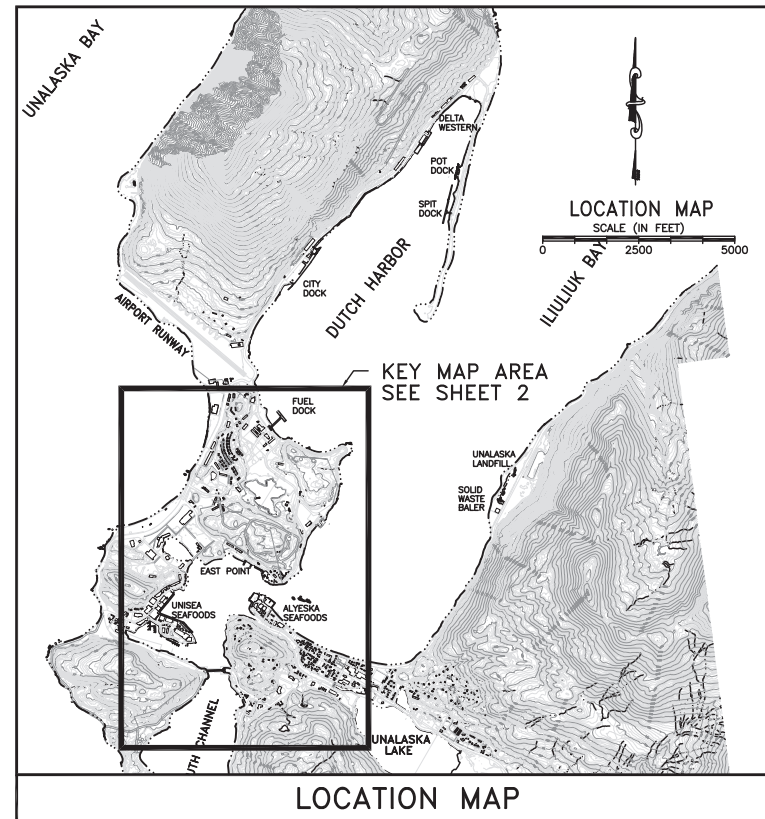
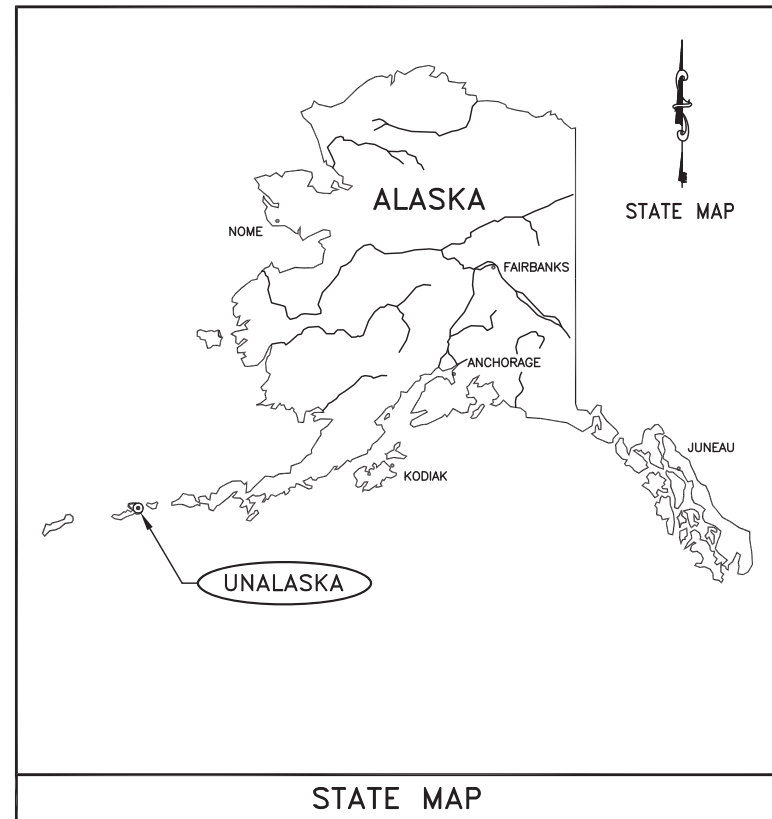


City of Unalaska

2020 PARK AND PLAYGROUND IMPROVEMENTS

DPW Project No. 19102 SITKA SPRUCE PARK IMPROVEMENTS

DPW Project No. 15202 UCSD PLAYGROUND RENOVATIONS



SHEET INDEX

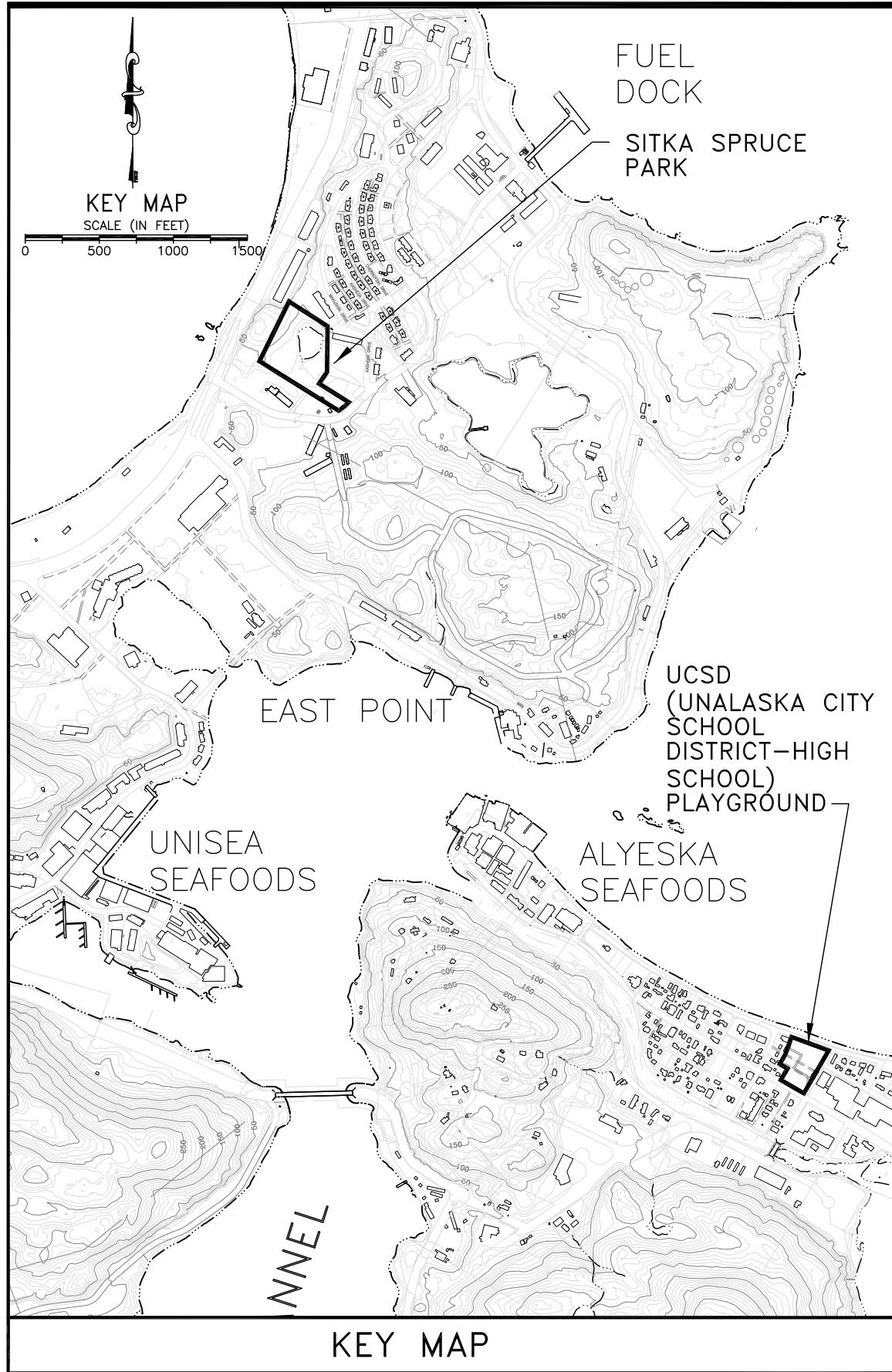
1	COVER SHEET
2	KEY MAP, ABBREVIATIONS, LEGEND
3	UCSD PARK EXISTING SITE
4	UCSD PARK SITE PHOTOGRAPHS
5	UCSD PARK DEMOLITION PLAN
6	UCSD PARK DEVELOPMENT & LAYOUT PLAN
7	UCSD PARK DRAINAGE/ELEVATION PLAN
8	UCSD PARK PLAY FIELD
8.1	UCSD PARK PLAY FIELD DETAIL
9	UCSD PARK BASKETBALL/VOLLEYBALL COURT
10	UCSD PARK SWING SET
11	UCSD PARK PYRAMID CLIMBER
12	UCSD PARK BOULDER STACK
13	UCSD PARK CHAIN LINK FENCE
14	UCSD PARK STORM DRAIN PLAN & PROFILE
14.1	UCSD PARK STORM DRAIN DETAILS
14.2	UCSD PARK STORM DRAIN DETAILS
15	UCSD PARK MISCELLANEOUS DETAILS
16	SITKA SPRUCE PARK EXISTING SITE
17	SITKA SPRUCE PARK DEMOLITION PLAN
18	SITKA SPRUCE PARK DEVELOPMENT & LAYOUT PLAN
18.1	SITKA SPRUCE PARK DEVELOPMENT PLAN ENTRY
19	SITKA SPRUCE PARK PLAYGROUND
19.1	PLAYGROUND FOUNDATIONS
20	SITKA SPRUCE PARK SUMMIT ROCK
21	SITKA SPRUCE PARK BASKETBALL COURT
22	SITKA SPRUCE PARK WOOD FENCE
23	SITKA SPRUCE PARK SEPARATOR WALL
24	PLAYGROUND DETAILS
25	MISCELLANEOUS DETAILS

GENERAL NOTES

1. THE SCOPE OF THIS WORK INCLUDES DEMOLITION OF IDENTIFIED FACILITIES AND CONSTRUCTION OF IMPROVEMENTS AT TWO CITY OWNED PUBLIC PARKS LOCATED IN UNALASKA, ALASKA. SITKA SPRUCE PARK (SSP) IS A NATIONAL HISTORIC LANDMARK, REPRESENTING THE OLDEST REFORESTATION PROJECT IN NORTH AMERICA. THE TREES WERE PLANTED BY THE RUSSIAN AMERICA COMPANY CIRCA 1805. WORK NEEDS TO BE CONSTRUCTED WITHOUT DAMAGE TO EXISTING SITKA SPRUCE TREES OR ROOTS. THE UNALASKA CITY SCHOOL DISTRICT (UCSD) PARK IS PRIMARILY INTENDED TO SUPPORT HIGH SCHOOL PHYSICAL EDUCATION USE BUT WILL BE OPEN TO THE PUBLIC OUTSIDE OF SCHOOL HOURS. BOTH PROJECTS ARE INTENDED TO ENHANCE AND IMPROVE THE QUALITY OF LIFE IN UNALASKA/DUTCH HARBOR.
2. ALL WORK SHALL BE CONDUCTED ON THE CITY OWNED PARK PARCELS. PROPERTY LINES SHALL BE SURVEYED AND CLEARLY MARKED ADJACENT TO IMPROVEMENTS TO ASSURE WORK IS CONFINED TO THE PROJECT PROPERTIES.
3. ALL UTILITIES SHOWN ARE APPROXIMATE. SITKA SPRUCE PARK UTILITIES EXISTS BUT ARE NOT SHOWN. THE CONTRACTOR SHALL OBTAIN UTILITY LOCATES AND VERIFY THE EXACT LOCATION OF UTILITIES PRIOR TO ANY EXCAVATION. THE CONTRACTOR IS RESPONSIBLE TO REPAIR AND/OR REPLACE ANY UTILITIES THAT ARE DAMAGED DURING CONSTRUCTION.
4. AT A SUFFICIENT DISTANCE PRIOR TO ENCOUNTERING A KNOWN OBSTACLE OR A TIE INTO AN EXISTING UTILITY, THE CONTRACTOR SHALL EXPOSE AND VERIFY THE EXACT LOCATION OF THE OBSTACLE OR UTILITY SO THAT ALIGNMENT AND/OR GRADE MAY BE DETERMINED BEFORE THE PIPE SECTIONS ARE LAID IN THE TRENCH AND BACKFILLED. NO EXTRA PAYMENT WILL BE MADE FOR REWORK OF NEWLY INSTALLED UTILITIES REQUIRED BY FAILURE TO EXPOSE EXISTING UTILITIES PRIOR TO THE START OF WORK.
5. THE CONTRACTOR IS RESPONSIBLE TO PROPERLY DISPOSE OF ALL DEMOLISHED ITEMS NECESSARY FOR CONSTRUCTION, INCLUDING PAYMENT OF APPLICABLE DISPOSAL FEES.
6. THE CITY RETAINS THE FIRST RIGHT OF REFUSAL FOR ANY AND ALL MATERIALS REMOVED FROM THE SITES, INCLUDING BUT NOT LIMITED TO PLAY EQUIPMENT OR OTHER ITEMS SUITABLE FOR REUSE.
7. EVEN THOUGH THE PLAN SHEETS ARE IDENTIFIED BY PROJECT SITE, SOME OF THE DETAILS ARE COMMON TO BOTH PARKS AND THEY APPLY AS REQUIRED OR REFERENCED TO SUPPORT THE DESCRIBED WORK.

FOR BID
NOV. 11, 2019

REGAN ENGINEERING, P.C.	
<small>PROJECT:</small>	City of Unalaska 2020 PARK AND PLAYGROUND IMPROVEMENTS
<small>TITLE:</small>	COVER SHEET
<small>DESIGNED BY:</small>	<small>TR</small>
<small>CHECKED BY:</small>	<small>TR</small>
<small>DATE:</small>	11/11/2019
<small>PROJECT NOS:</small>	19102, 15202
<small>SHEET NO:</small>	1 OF 30



ABBREVIATIONS

APPROXIMATE	APPROX.
ABANDONED	ABND.
ALASKA DEPT OF TRANSPORTATION	ADOT, DOT
ALUMINUM	ALUM
CATCH BASIN	CB
CENTERLINE	CL
CORRUGATED METAL PIPE	CMP
CORRUGATED PLASTIC PIPE	CPEP
CLEANOUT	CO
CULVERT	CULV
DIAMETER	DIA.
DEGREE	DEG.
DUCTILE IRON PIPE	DIP
ELECTRIC	ELEC, ELE
ELEVATION	ELEV, EL
ELECTRIC	E
EXISTING	(E), EX, EXIST
FOUNDATION	FDN
FEET, FOOT	FT.
GALVANIZED	GALV.
GAUGE	GA.
HEIGHT	H
INSIDE DIAMETER	I.D.
INVERT	INV.
LINEAR FEET	L.F.
LEFT	LT, L
LENGTH	L
MANHOLE	MH
MAXIMUM	MAX
MINIMUM	MIN.
NORTH, NORTHING	N
NOT-TO-SCALE	N.T.S.
NOT-IN-CONTRACT	NIC
OUTSIDE DIAMETER	OD, O.D.
ON-CENTER	O.C.
OUNCE	OZ.
POUND, POUNDS	LB, LBS.
POUNDS PER SQUARE INCH	PSI
RADIUS	R
RIGHT OF WAY	ROW, R/W, R-O-W
RIGHT	RT, R
SLOPE, SOUTH	S
SEWER	S
SQUARE FOOT	SF
STORM DRAIN	SD
STATION	STA.
STORM DRAIN MANHOLE	SDMH
SS	STAINLESS STEEL
TELEPHONE	T
TEMPORARY BENCH MARK	TBM
TESTHOLE	TH
TOP OF GRATE	TOG
TYPICAL	TYP.
UNDERGROUND ELECTRIC	UE
UNDERGROUND TELEPHONE	UT
ULTRA-VIOLET	UV
VERTICAL	VERT
WATER	W
WELDED WIRE FABRIC	WWF
WIDTH	W
WITH	W/
WATER VALVE	WV
WORLD WAR II	WWII

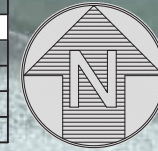
LEGEND

	EXISTING	PROPOSED
FOUND 3" ALUMINUM CAP	X	
FOUND ALUMINUM CAP	⊙	
FOUND 5/8" REBAR	⊙	
STORM DRAIN	— SD — SD — SD —	— SD —
TELEPHONE/CABLE PEDESTAL		
ELECTRICAL BOX	⊠	
SANITARY SEWER LINE	— S —	
WATER LINE	— W —	
UNDERGROUND ELECTRIC	— E —	
UNDERGROUND TELEPHONE	— T —	
DESIGN COORDINATE	5	
ELEVATION CONTOUR	10	
LUMINAIRE	☼	
SANITARY SEWER MANHOLE	⊙	
STORM MANHOLE	⊙	⊙
WATER VALVE		
WATER SERVICE		
HYDRANT	☼	
CATCH BASIN	□	
BOLLARD	●	
ELEV, NEW/EXIST	16.8' 15.6'	
GUARDRAIL	○ — ○ — ○	
SIGN	b	
CHAIN LINK FENCE	○ — ○ — ○	○ — ○ — ○
DRAINAGE ARROW/SLOPE		1%
PHOTOGRAPH NO. & DIRECTION		9 ↗

**FOR BID
NOV. 11, 2019**

REGAN ENGINEERING, P.C.		
PROJECT: City of Unalaska		
2020 PARK AND PLAYGROUND IMPROVEMENTS		
TITLE: KEY MAP, ABBREVIATIONS, LEGEND		
DESIGNED BY: TR	DATE: 11/11/2019	SHEET NO:
CHECKED BY: TR	PROJECT NOS: 19102, 15202	2 OF 30

CONTROL POINT TABLE				
POINT	NORTHING	EASTING	ELEVATION	DESCRIPTION
10	1185503.5560	5316696.4240	11.78	MON
444	1183559.1710	5318255.5620	17.01	BM
1014	1183409.4190	5318351.6730	16.32	REBAR
1015	1183448.3030	5318062.3100	14.41	REBAR



SCALE IN FEET



PLAN VIEW

FOR BID
NOV. 11, 2019

REGAN ENGINEERING, P.C.	
PROJECT:	City of Unalaska 2020 PARK AND PLAYGROUND IMPROVEMENTS
TITLE:	UCSD PARK EXISTING SITE
DESIGNED BY:	TR DATE: 11/11/2019 SHEET NO:
CHECKED BY:	TR PROJECT NOS: 19102, 15202 3 OF 30



1



2



3



4



5



6



7



8



9



10



11



12



13



14



15



16




17



18

FOR BID
NOV. 11, 2019

 REGAN ENGINEERING, P.C.			
PROJECT:		City of Unalaska 2020 PARK AND PLAYGROUND IMPROVEMENTS	
TITLE:		UCSD PARK SITE PHOTOGRAPHS	
DESIGNED BY:	TR	DATE:	11/11/2019
CHECKED BY:	TR	PROJECT NOS:	19102, 15202
			SHEET NO: 4 OF 30



PLAN VIEW

FOR BID
NOV. 11, 2019

REGAN ENGINEERING, P.C.			
PROJECT:		City of Unalaska 2020 PARK AND PLAYGROUND IMPROVEMENTS	
TITLE:		UCSD PARK DEMOLITION PLAN	
DESIGNED BY:	TR	DATE:	11/11/2019
CHECKED BY:	TR	PROJECT NOS:	19102, 15202
			SHEET NO: 5 OF 30



SCALE IN FEET

Bayview Avenue

N. 5th St.

Mission Avenue

Block 5

RELOCATE BERMS TO OUTSIDE OF FENCE ALONG BAYVIEW AVENUE

112' 8" HIGH CHAIN LINK FENCE, SEE SHEET 13

96'x135' PLAY FIELD WITH RADIUSED CORNERS, TOTAL AREA 12,426 SF ARTIFICIAL TURF, SEE SHEET 8

STORM DRAIN, SEE SHEET 14

12' WIDE GRAVEL TRAIL (950'), TOTAL AREA 11,360 SF

PYRAMID CLIMBER SEE SHEET 11

BOULDER STACK SEE SHEET 12

(E) Concrete Pad

4-SQUARE COURT, PAINT STRIPES TO MATCH BLUE, ALL SQUARES 8'x8'

RELOCATE 116' GUARDRAIL, SEE SHEET 15

4' HIGH CHAIN LINK FENCE (657' EXCLUDING 8' FENCE AND GATES), SEE SHEET 13

6'x45' CONCRETE SIDEWALK EXTENSION, SEE SHEET 15

Gravel Parking

4' WIDE MAN GATE, ENTRY SIGN

16' WIDE EQUIP. ACCESS GATE

4' WIDE MAN GATE, ENTRY SIGN

FOR BID NOV. 11, 2019

LAYOUT COORDINATES			
NO.	NORTHING	EASTING	DESCR.
1	1183431.11	5318053.62	8' FENCE COR
2	1183528.51	5318108.92	8' FENCE COR
3	1183533.76	5318142.26	FENCE COR
4	1183582.30	5318159.81	FENCE COR
5	1183505.84	5318371.30	FENCE COR
6	1183321.11	5318247.98	FENCE COR
7	1183478.58	5318097.85	C.L. PLAYFIELD
8	1183412.19	5318215.14	C.L. PLAYFIELD
9	1183412.89	5318223.18	COR ROCK
10	1183402.99	5318240.56	COR ROCK
11	1183444.72	5318277.76	COR PYR
12	1183457.45	5318255.09	COR PYR
13	1183462.83	5318295.71	COR BBALL
14	1183485.61	5318232.70	COR BBALL
15	1183495.82	5318228.42	COR SWING

PLAN VIEW

REGAN ENGINEERING, P.C.

PROJECT: City of Unalaska
2020 PARK AND PLAYGROUND IMPROVEMENTS

TITLE: UCSD PARK
DEVELOPMENT & LAYOUT PLAN

DESIGNED BY: TR DATE: 11/11/2019 SHEET NO: 6 OF 30
CHECKED BY: TR PROJECT NOS: 19102, 15202



SCALE IN FEET

Bayview Avenue

N. 5th St.

Mission Avenue

Block 5



SHEET LEGEND
SPOT ELEVATION
PROPOSED/EXISTING

Gravel
Parking

PLAN VIEW

RELOCATE 116'
GUARDRAIL, SEE
SHEET 15

(E)
Concrete
Pad

Building

Fuel

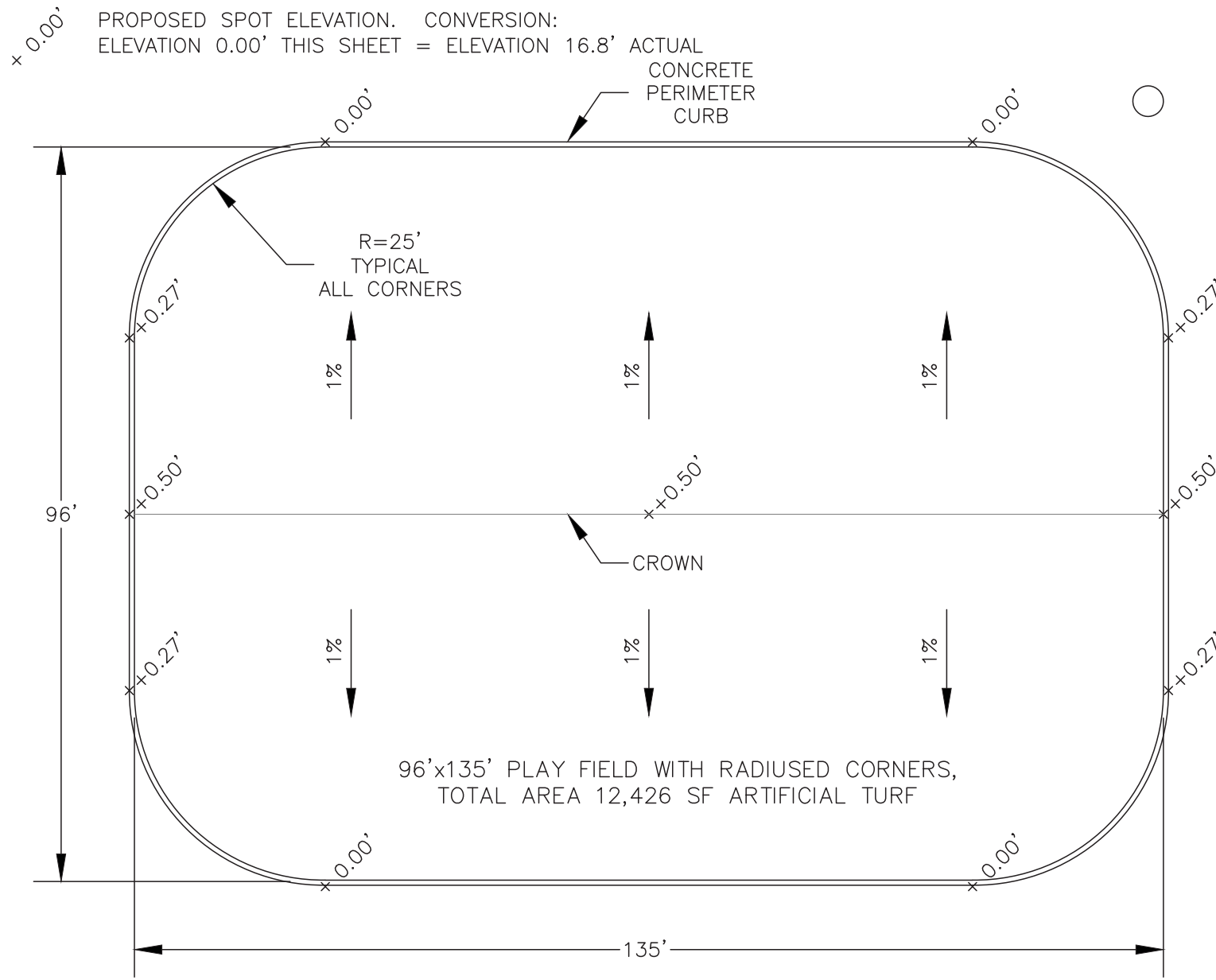
FOR BID
NOV. 11, 2019

REGAN ENGINEERING, P.C.

PROJECT: City of Unalaska
2020 PARK AND PLAYGROUND IMPROVEMENTS

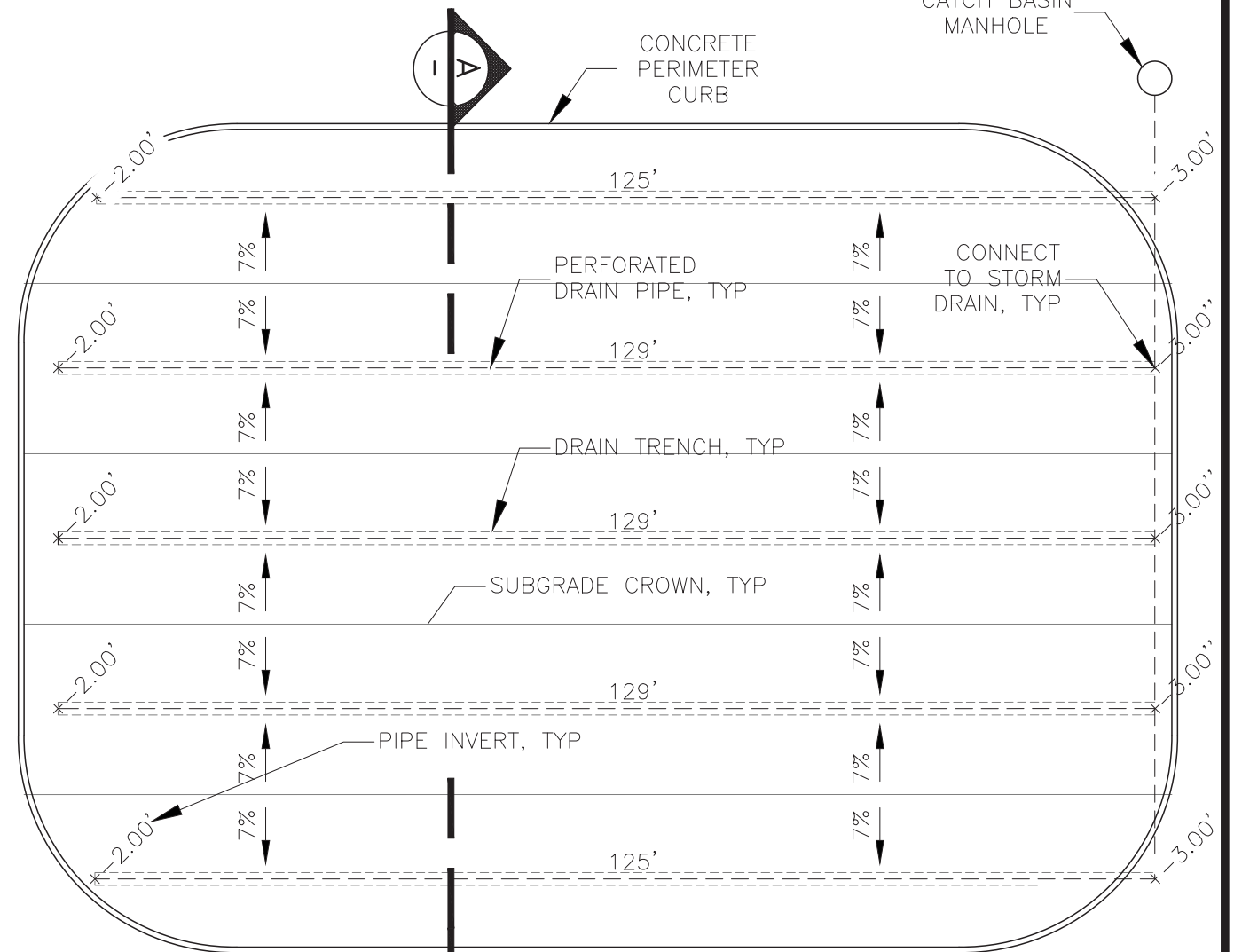
TITLE: UCSD PARK
DRAINAGE/ELEVATION PLAN

DESIGNED BY: TR DATE: 11/11/2019 SHEET NO: 7 OF 30
CHECKED BY: TR PROJECT NOS: 19102, 15202



PLAN VIEW - PLAY FIELD SURFACE

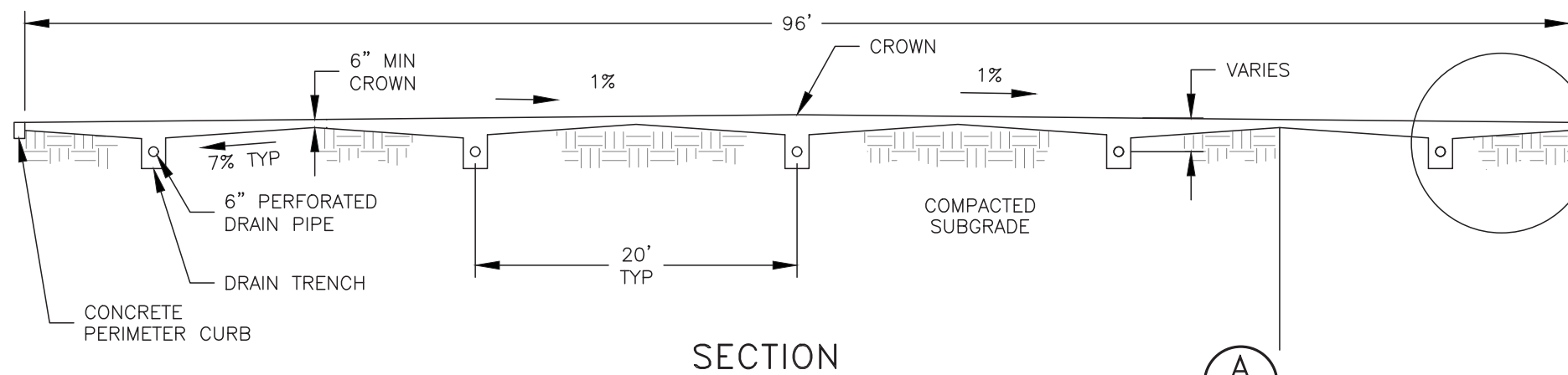
SCALE: 1"=20'



NOTE: SEE STORM PLAN AND PROFILE SHEET 14 FOR STORM DRAIN COLLECTION PIPE ELEVATIONS. CONNECT TO NEW STORM DRAIN WITH 45-DEG BENDS CONNECTING TO ROLLED TEES TO TRANSITION ELEVATIONS.

PLAN VIEW - PLAY FIELD UNDERDRAIN

SCALE: 1"=20'



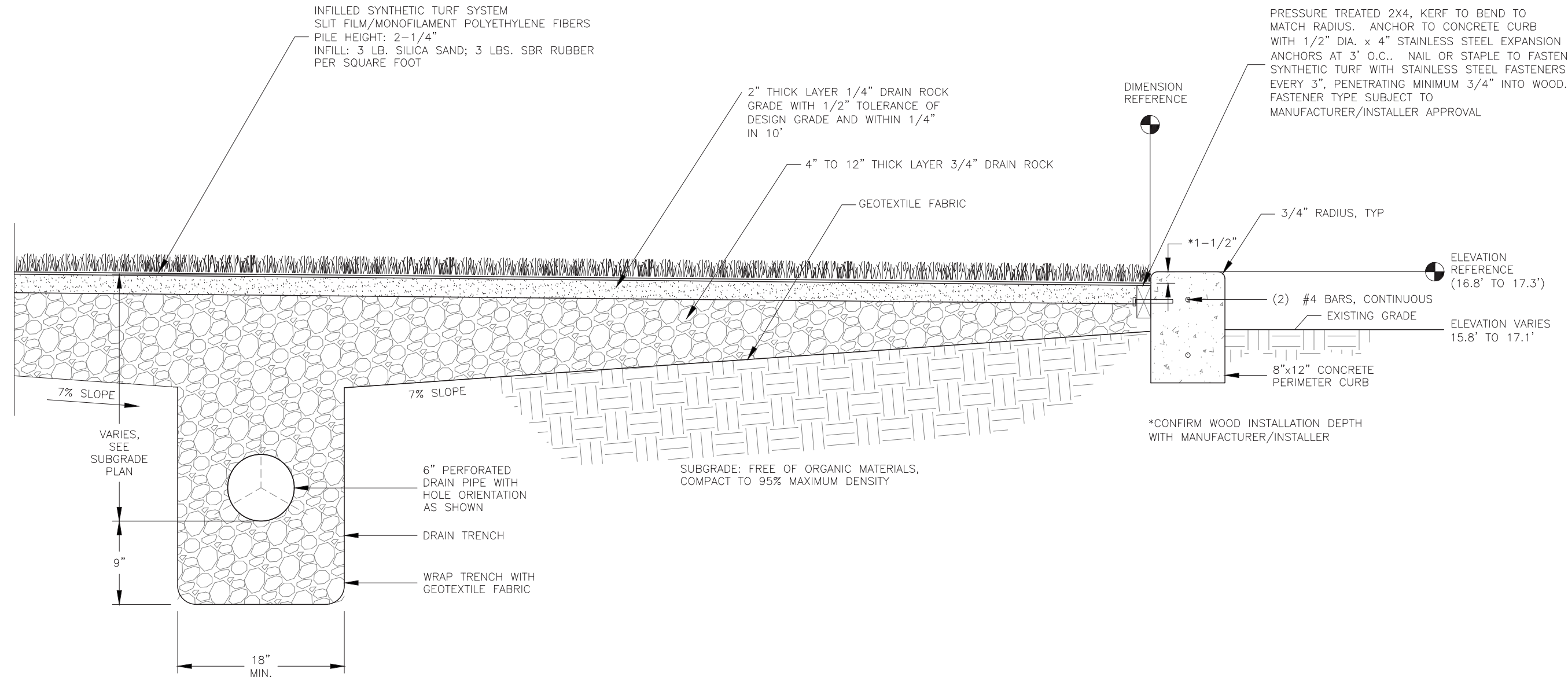
SECTION

SCALE: 1"=10'



FOR BID
NOV. 11, 2019

REGAN ENGINEERING, P.C.	
PROJECT: City of Unalaska 2020 PARK AND PLAYGROUND IMPROVEMENTS	
TITLE: UCSD PARK PLAY FIELD	
DESIGNED BY: TR	DATE: 11/11/2019 SHEET NO: 8 OF 30
CHECKED BY: TR	PROJECT NOS: 19102, 15202



DETAIL – PLAY FIELD SURFACE AND TRENCH DRAIN

SCALE: 1"=1'-0"

1
-

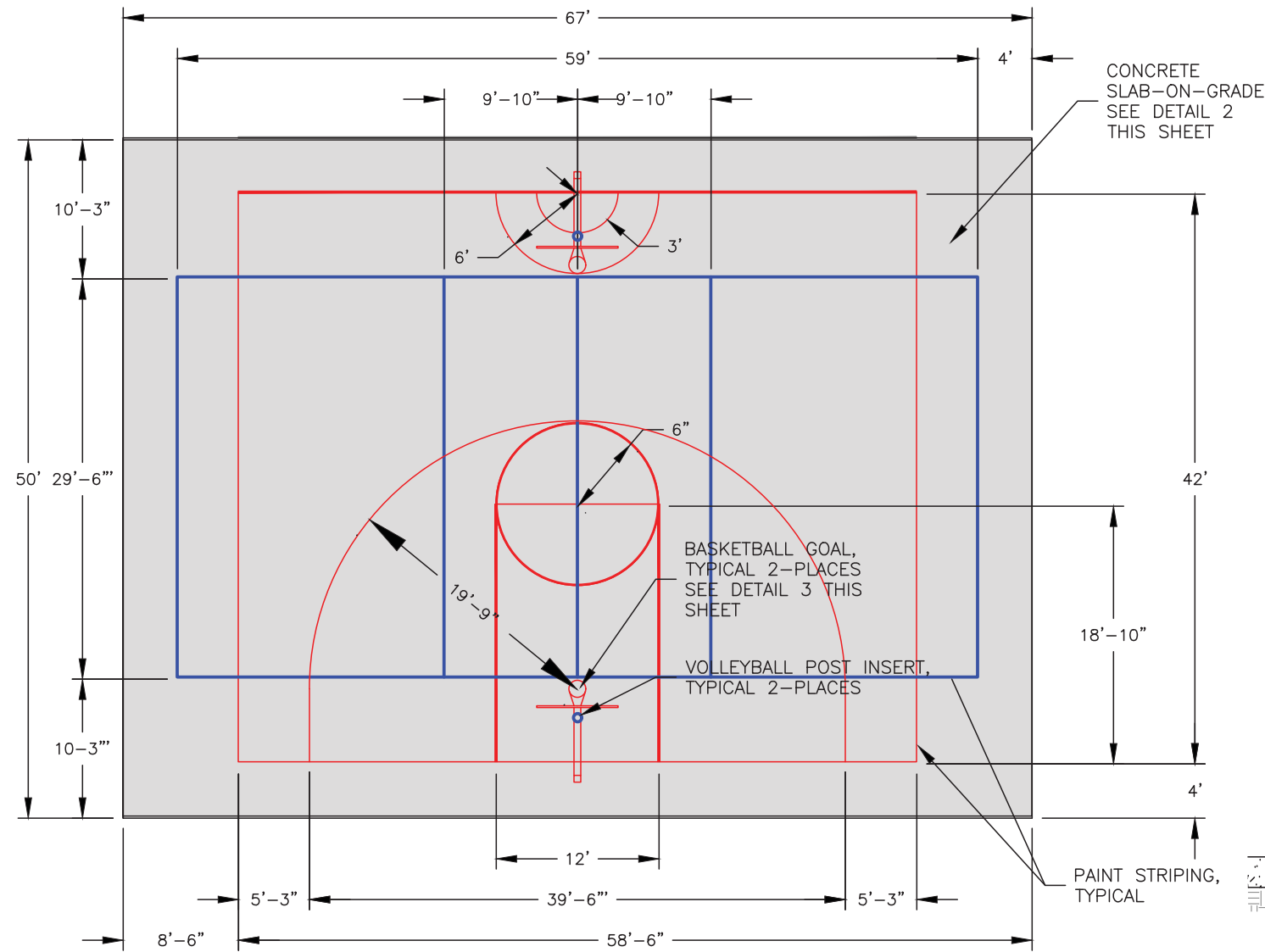
FOR BID
NOV. 11, 2019

REGAN ENGINEERING, P.C.

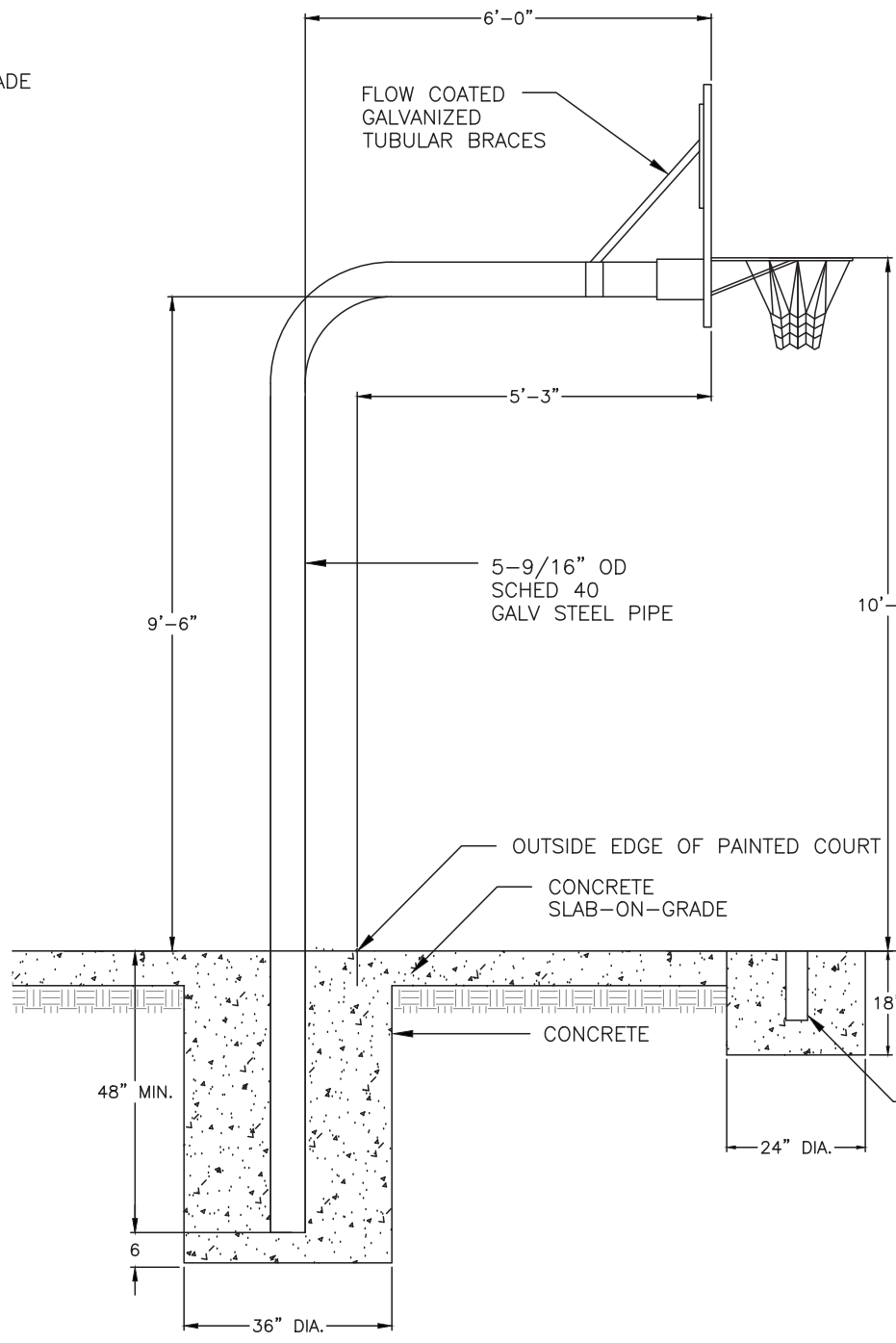
PROJECT: City of Unalaska
2020 PARK AND PLAYGROUND IMPROVEMENTS

TITLE: UCSD PARK
PLAYFIELD DETAIL

DESIGNED BY: TR	DATE: 11/11/2019	SHEET NO: 8.1 OF 30
CHECKED BY: TR	PROJECT NOS: 19102, 15202	

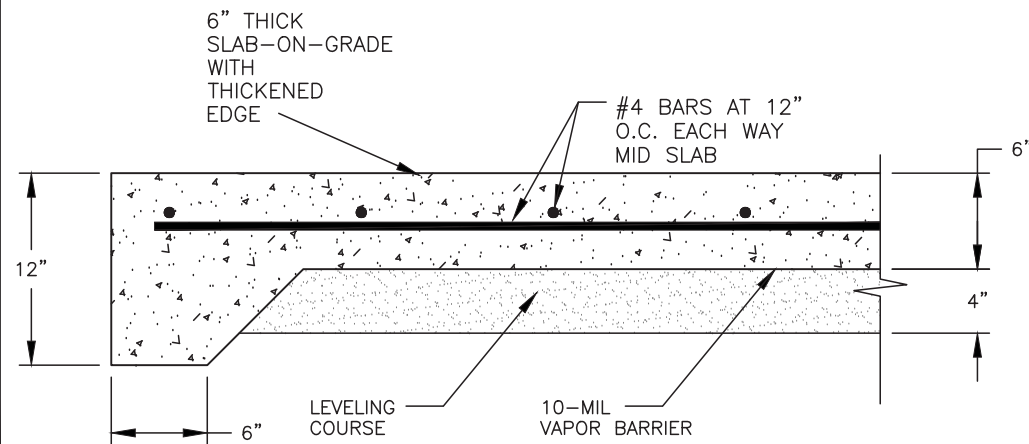


PLAN VIEW - BASKETBALL/VOLLEYBALL COURT (1)
SCALE: 1"=12'-0"



DETAIL - BASKETBALL GOAL SYSTEM (3)
SCALE: 3/8"=1'-0"

- SPECIFICATIONS:**
- BASKETBALL SYSTEM SHALL BE "BISON PR75 MEGA-DUTY FINISHED ALUMINUM FAN GOOSNECK" OR EQUAL WITH THE FOLLOWING OPTIONS:
 - BACKBOARD: 1-1/2" THICK, 35-1/2"x54" FAN SHAPED PLAYING SURFACE, ALUMINUM WITH TEXTURED POLYESTER POWDER COATED FINISH WITH OFFICIAL SIZE ORANGE SHOOTERS SQUARE AND BORDER.
 - HOT-DIP GALVANIZED FINISH ON POLE AND HARDWARE.
 - UNCONDITIONAL LIFETIME FUNCTIONAL WARRANTY.
 - DOUBLE RING, NYLON NET GOAL WITH OPTIONAL CHAIN NET PROVIDED. RIM SHALL ATTACH DIRECTLY TO HORIZONTAL POLE SECTION THROUGH BACKBOARD.
 - INSTALL SYSTEM PLUMB AND TRUE TO THE REQUIREMENTS OF THE MANUFACTURER.
 - VOLLEYBALL SYSTEM SHALL BE "VOLLEYBALL USA POP-BAZOOKA" OR EQUAL WITH THE FOLLOWING OPTIONS:
 - 3.5" POSTS, HEAVY WALL 12' ANODIZED ALUMINUM.
 - COMPLETELY STAINLESS STEEL WINCH.
 - PROVIDE FLOOR SOCKETS WITH REMOVABLE CAP, ALL POWDER COATED SEAMLESS ALUMINUM WITH WELDED BASE RING.

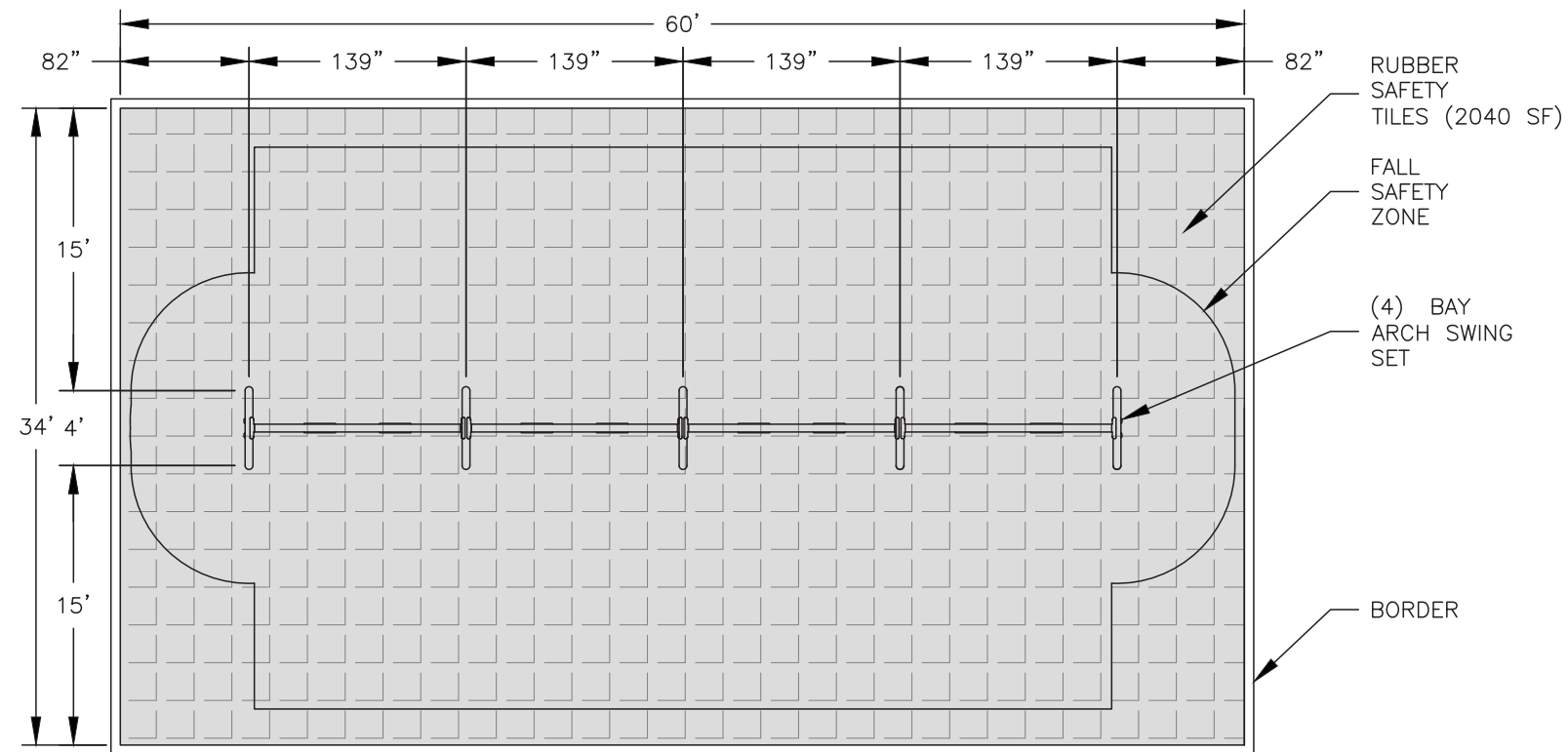


SECTION - COMBINATION BASKETBALL/VOLLEYBALL COURT (2)
SCALE: 1"=1'-0"

- GENERAL NOTES:**
- PROVIDE 2" WIDE PAINTED STRIPES AS DIMENSIONED IN THE PLAN VIEW. COLOR AS SHOWN. PAINT TO MEET A-A-3183, LATEX, ACRYLIC EMULSION, EXTERIOR (ADOT 708-2.03), APPLIED PER RECOMMENDATIONS OF MANUFACTURER. PAINT 4-SQUARE COURT SIMILIARLY.
 - SLOPE ENTIRE COURT SURFACE UNIFORMLY AS SHOWN ON DRAINAGE PLAN.
 - COURT AND GOAL DETAILS AT SITKA SPRUCE PARK ARE SIMILAR. SEE SHEET 21 FOR COURT DIMENSIONS.

FOR BID
NOV. 11, 2019

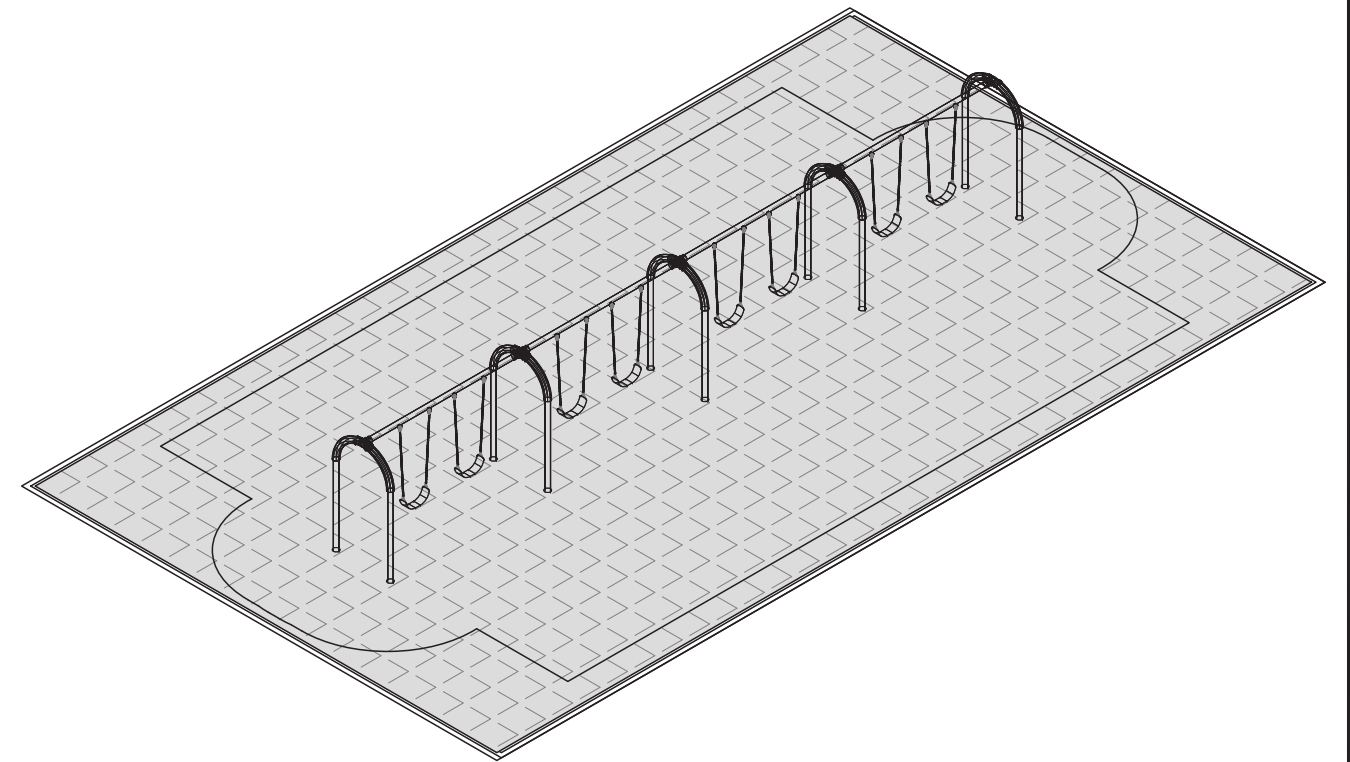
REGAN ENGINEERING, P.C.			
PROJECT:		City of Unalaska	
		2020 PARK AND PLAYGROUND IMPROVEMENTS	
TITLE:		UCSD PARK	
		BASKETBALL/VOLLEYBALL COURT	
DESIGNED BY:	TR	DATE:	11/11/2019
CHECKED BY:	TR	PROJECT NOS:	19102, 15202
			SHEET NO: 9 OF 30



PLAN VIEW – SWING SET

SCALE: 1"=10'-0"

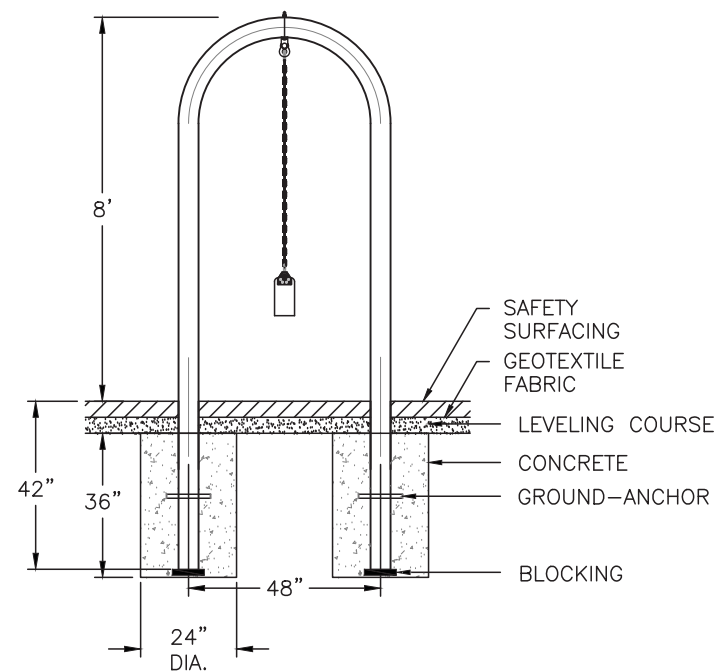
1
—



ISOMETRIC – SWING SET

SCALE: 1"=10'-0"

2
—

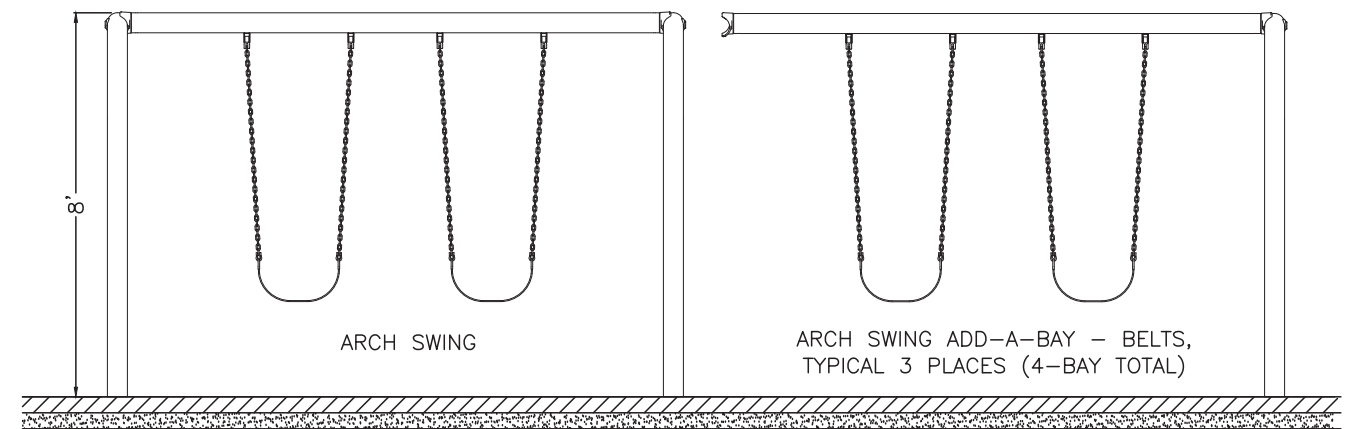


SIDE VIEW – SWING SET

SCALE: 1/4"=1'-0"

3
—

- GENERAL NOTES:
1. CONFIRM THE USE ZONE AND THE RUBBER SAFETY TILE THICKNESS ARE APPROPRIATE FOR THE SUPPLIED SWING SET.
 2. SEE DETAIL 1 SHEET 24 FOR PLAY AREA AND BORDER DETAILS.
 3. IN ADDITION TO (8) BELT SEATS, PROVIDE (1) BUCKET SEAT AND (1) ADA SEAT.
 4. SET SWING HEIGHTS IN ACCORDANCE WITH APPLICABLE STANDARDS AND MFGR RECOMMENDATIONS.



FRONT VIEW – SWING SET

SCALE: 1/4"=1'-0"

4
—

FOR BID
NOV. 11, 2019

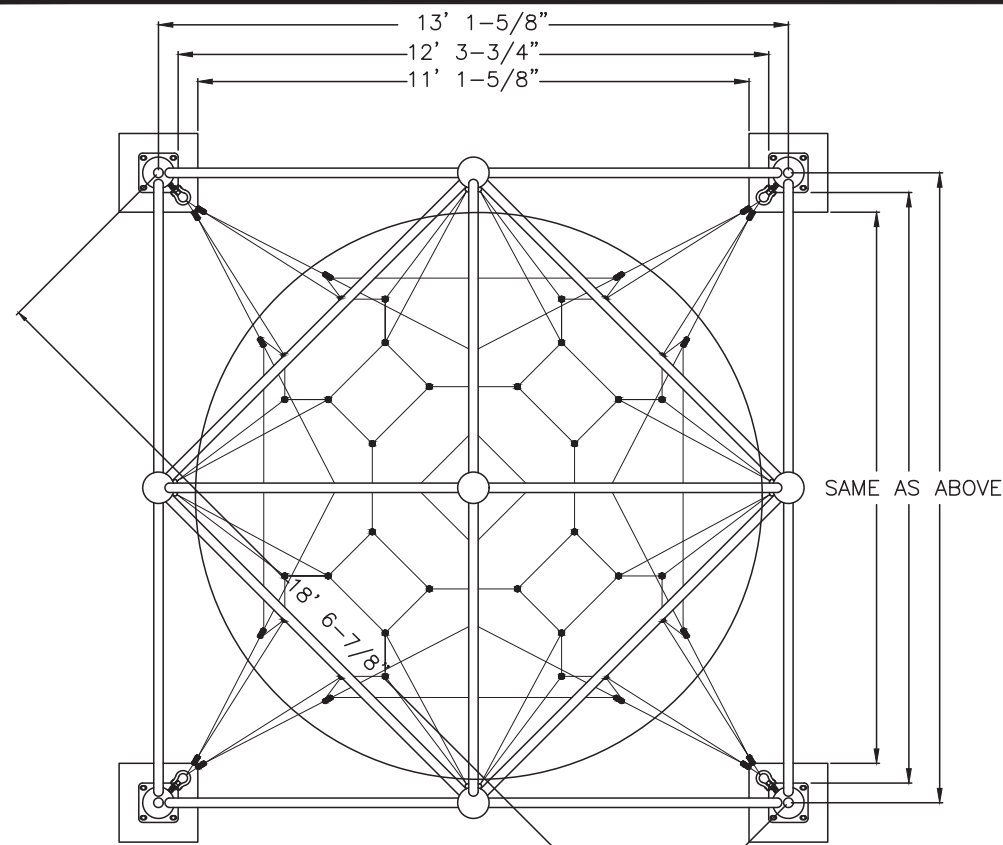
REGAN ENGINEERING, P.C.

PROJECT: City of Unalaska
2020 PARK AND PLAYGROUND IMPROVEMENTS

TITLE: UCSD PARK
SWING SET

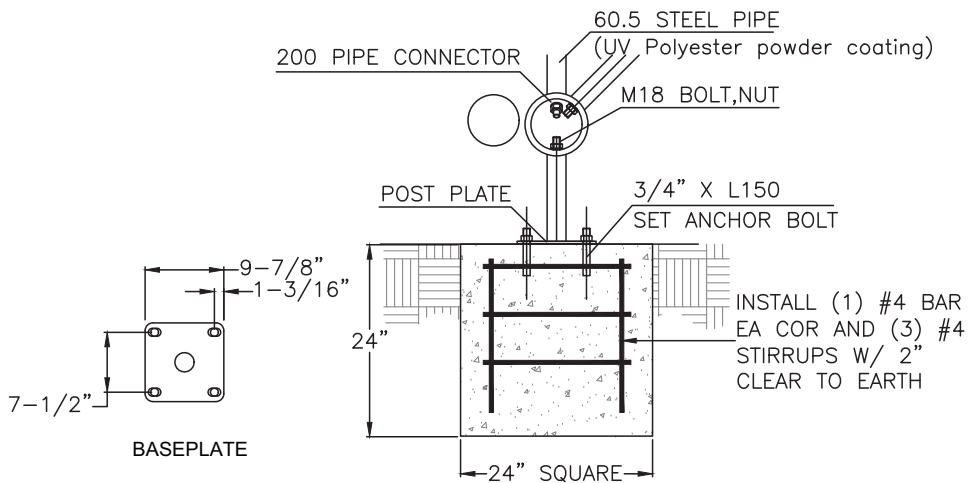
DESIGNED BY: TR DATE: 11/11/2019 SHEET NO:
CHECKED BY: TR PROJECT NOS: 19102, 15202

10 OF 30



PLAN VIEW - PYRAMID CLIMBER

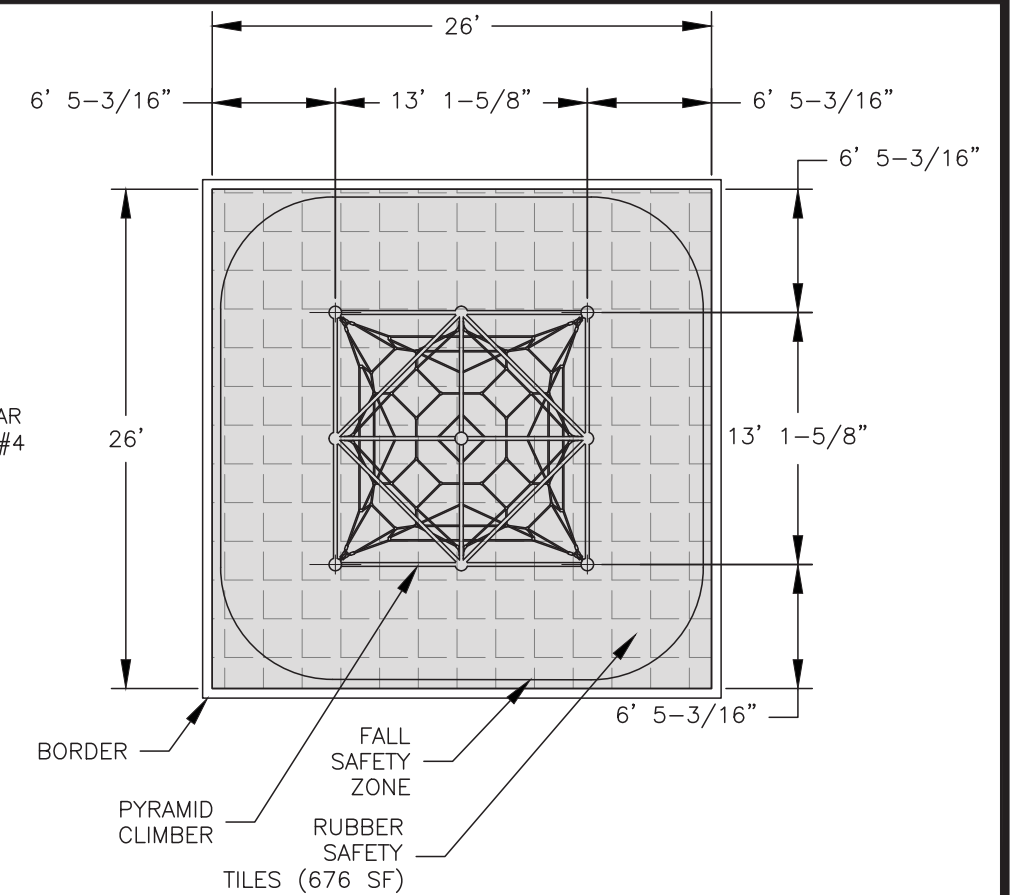
SCALE: 1/4"=1'-0"



FOOTING DETAIL

SCALE: 1/2"=1'-0"

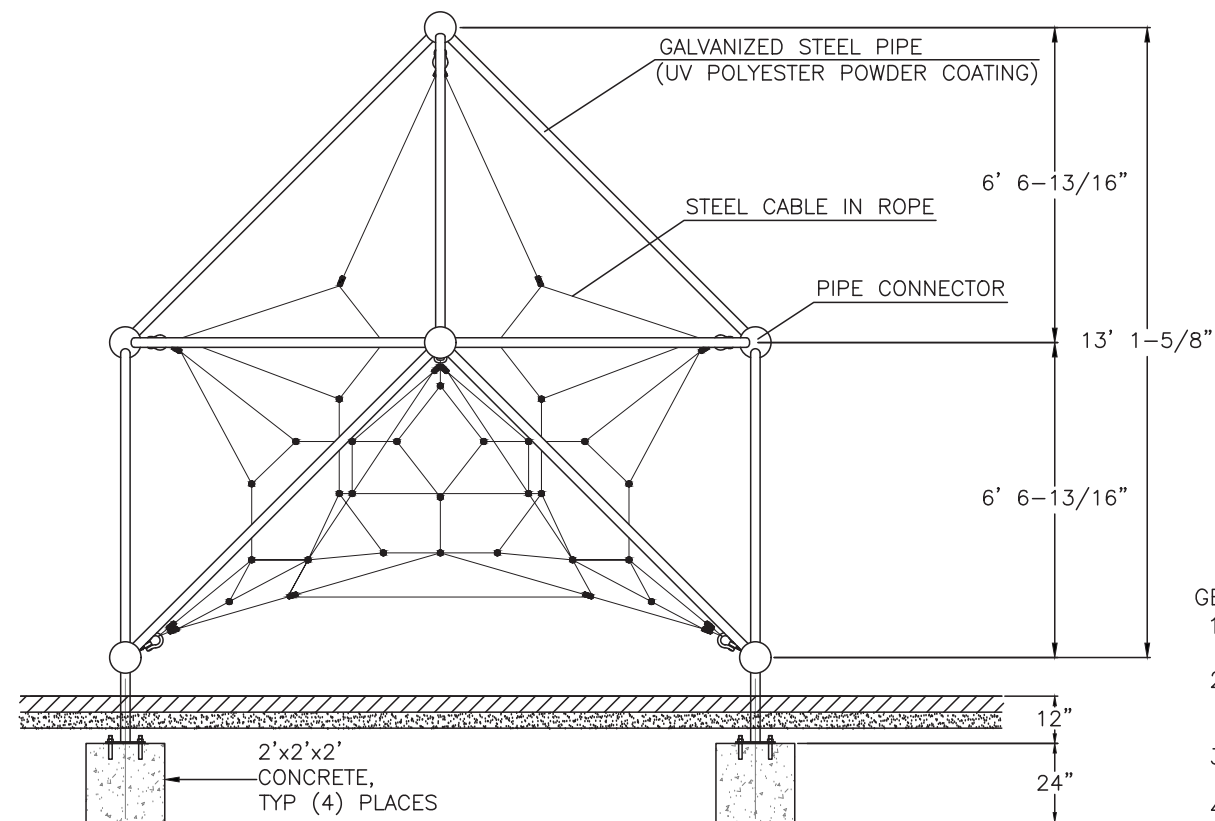
5



PLAN VIEW - PYRAMID CLIMBER AREA

SCALE: 1"=10'-0"

2



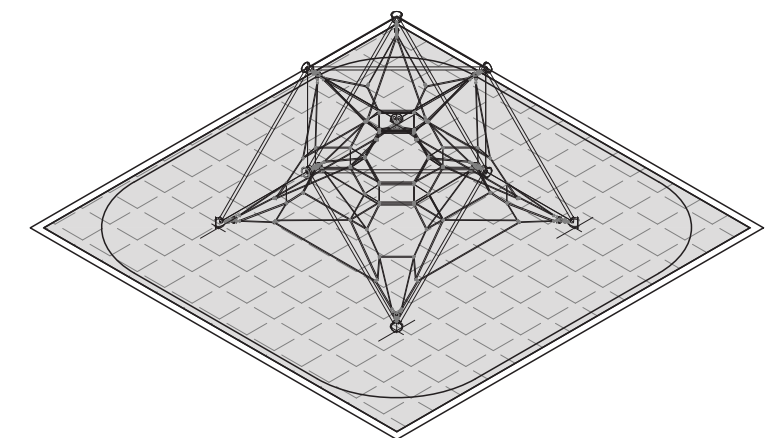
SIDE VIEW - PYRAMID CLIMBER

SCALE: 1/4"=1'-0"

3

GENERAL NOTES:

1. DESIGN BASED ON "DYNAMO - METEOR REGULAR DX-802".
2. CONFIRM THE USE ZONE AND THE RUBBER SAFETY TILE THICKNESS ARE APPROPRIATE FOR THE SUPPLIED EQUIPMENT.
3. CONFIRM DIMENSIONS WITH SUPPLIED PLAY EQUIPMENT.
4. SEE DETAIL 1 SHEET 24 FOR PLAY AREA AND BORDER DETAILS.
5. PYRAMID CLIMBER AT SITKA SPRUCE PARK IS IDENTICAL.



ISOMETRIC VIEW - PYRAMID CLIMBER

SCALE: 1"=10'-0"

4

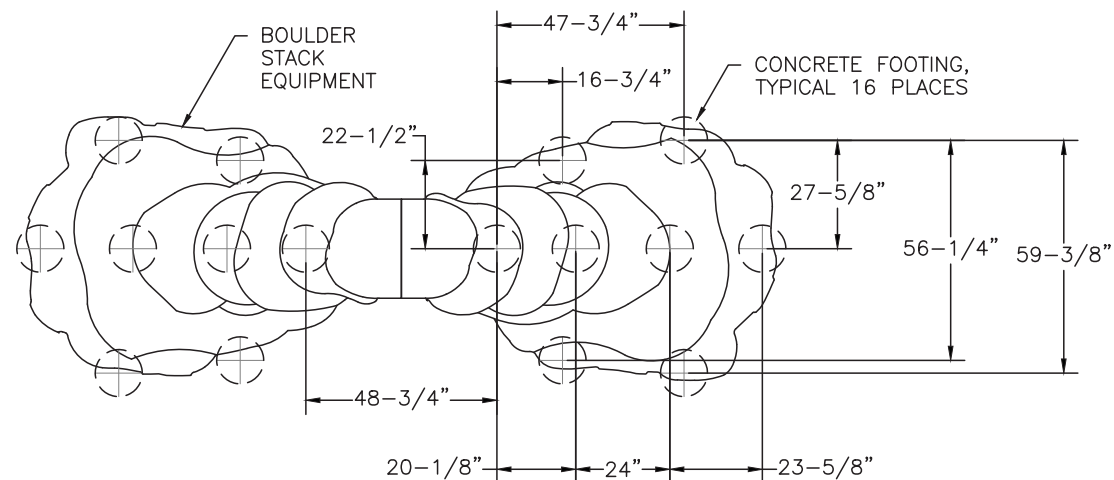
FOR BID
NOV. 11, 2019

REGAN ENGINEERING, P.C.

PROJECT: City of Unalaska
2020 PARK AND PLAYGROUND IMPROVEMENTS

TITLE: UCSD & SITKA SPRUCE PARKS
PYRAMID CLIMBER

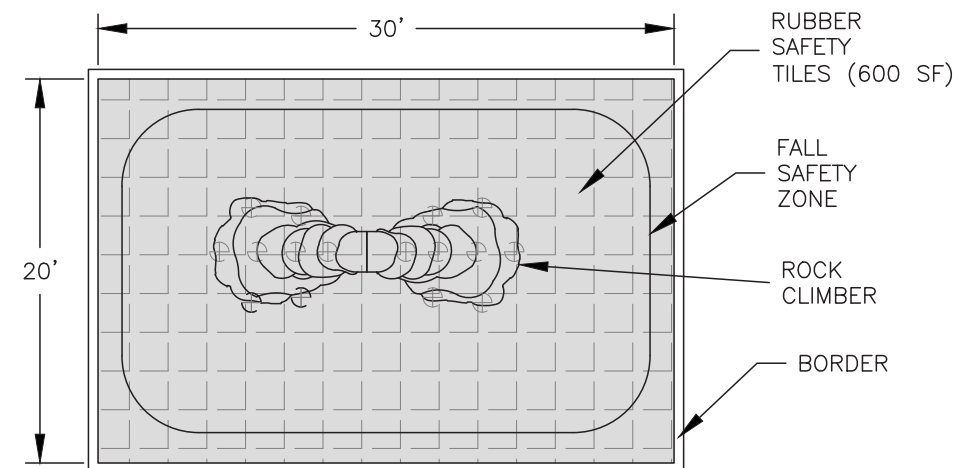
DESIGNED BY: TR DATE: 11/11/2019 SHEET NO:
CHECKED BY: TR PROJECT NOS: 19102, 15202



PLAN VIEW – BOULDER STACK FOOTING LAYOUT

SCALE: 1/4"=1'-0"

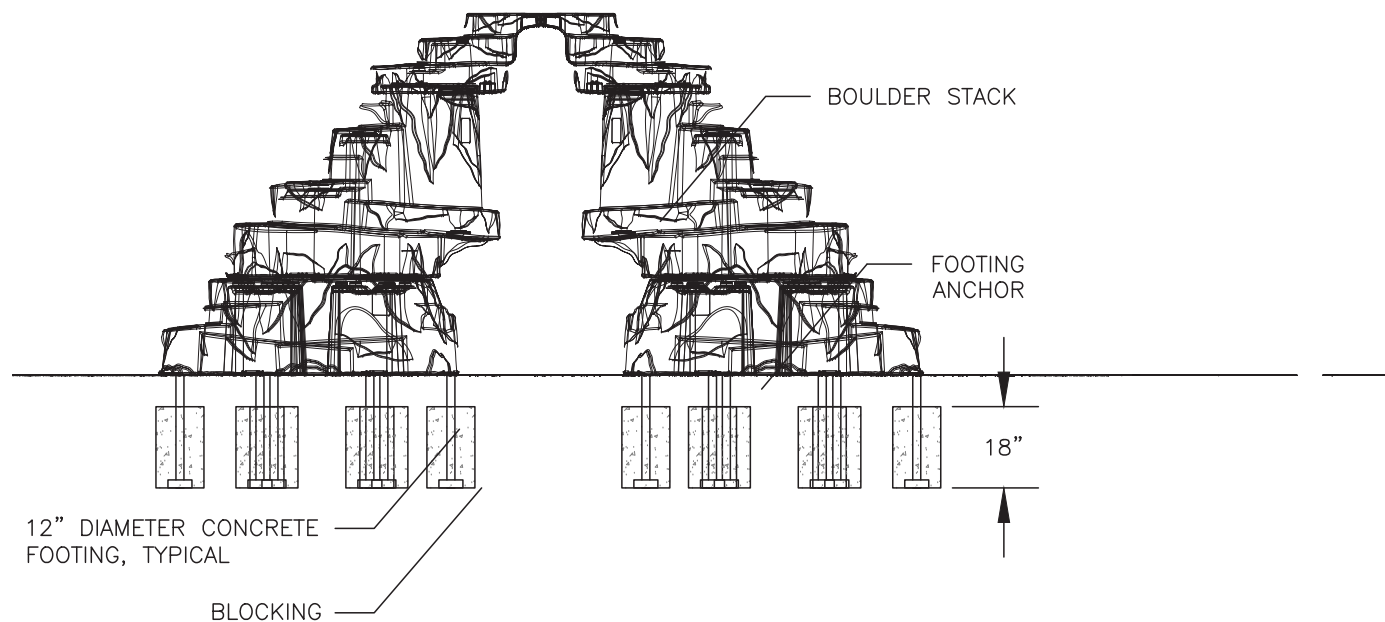
1
-



PLAN VIEW – BOULDER STACK AREA

SCALE: 1"=10'-0"

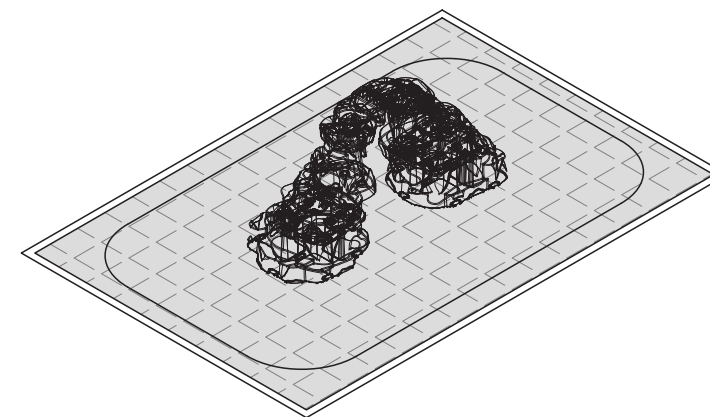
2
-



SIDE VIEW – BOULDER STACK

SCALE: 1/4"=1'-0"

3
-



ISOMETRIC VIEW – BOULDER STACK

SCALE: 1"=10'-0"

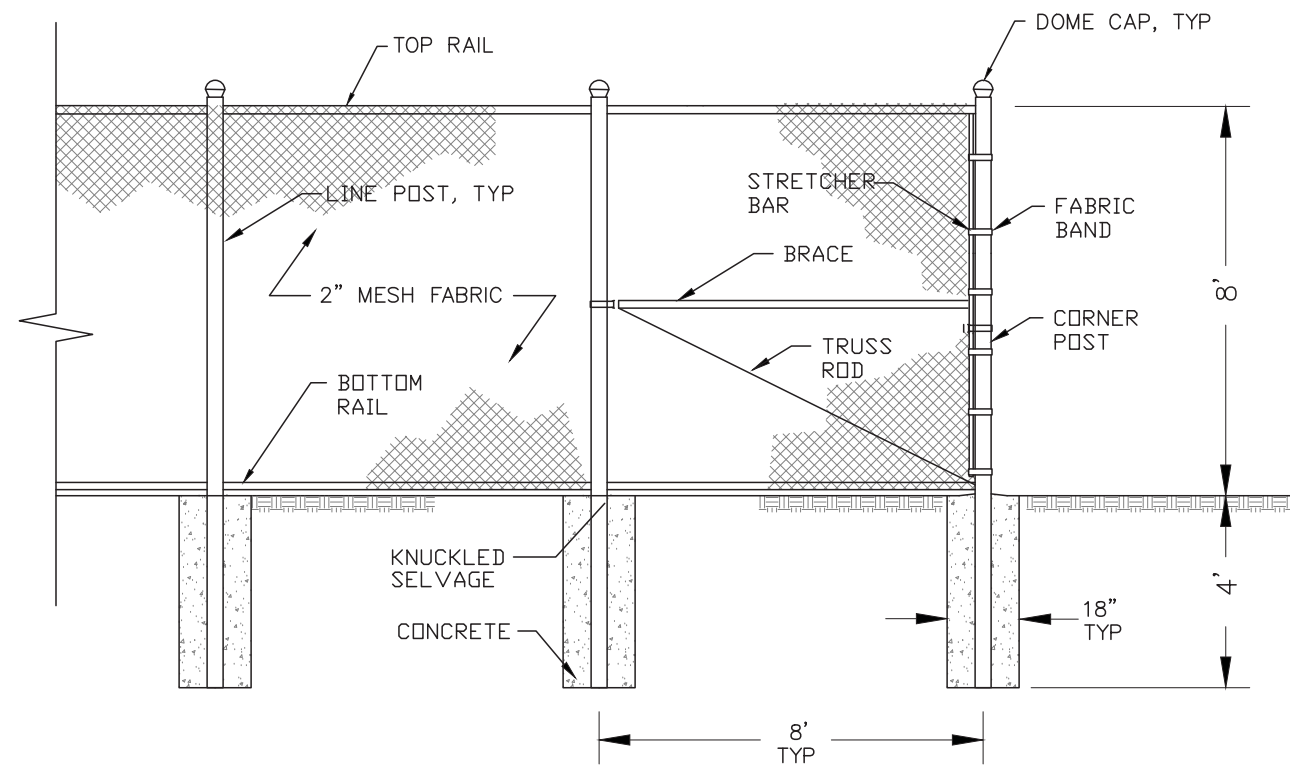
4
-

GENERAL NOTES:

1. DESIGN BASED ON "BOULDER STACK, PLAYCRAFT PC-2272-90".
2. CONFIRM THE USE ZONE AND THE RUBBER SAFETY TILE THICKNESS ARE APPROPRIATE FOR THE SUPPLIED EQUIPMENT.
3. CONFIRM DIMENSIONS WITH SUPPLIED PLAY EQUIPMENT.
4. SEE DETAIL 1 SHEET 24 FOR PLAY AREA AND BORDER DETAILS.

FOR BID
NOV. 11, 2019

REGAN ENGINEERING, P.C.			
PROJECT:		City of Unalaska 2020 PARK AND PLAYGROUND IMPROVEMENTS	
TITLE:		UCSD PARK BOULDER STACK	
DESIGNED BY:	TR	DATE:	11/11/2019
CHECKED BY:	TR	PROJECT NOS:	19102, 15202
			SHEET NO: 12 OF 30

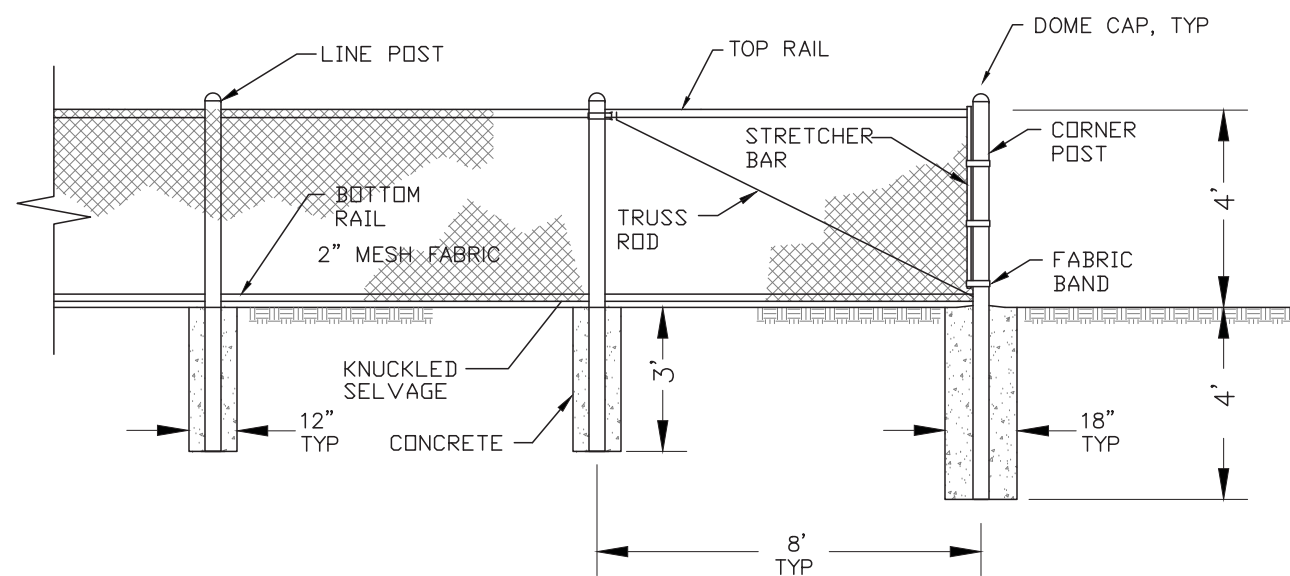


DETAIL - 8' FENCE AND CORNER POST

SCALE: 1/4"=1'-0"

1

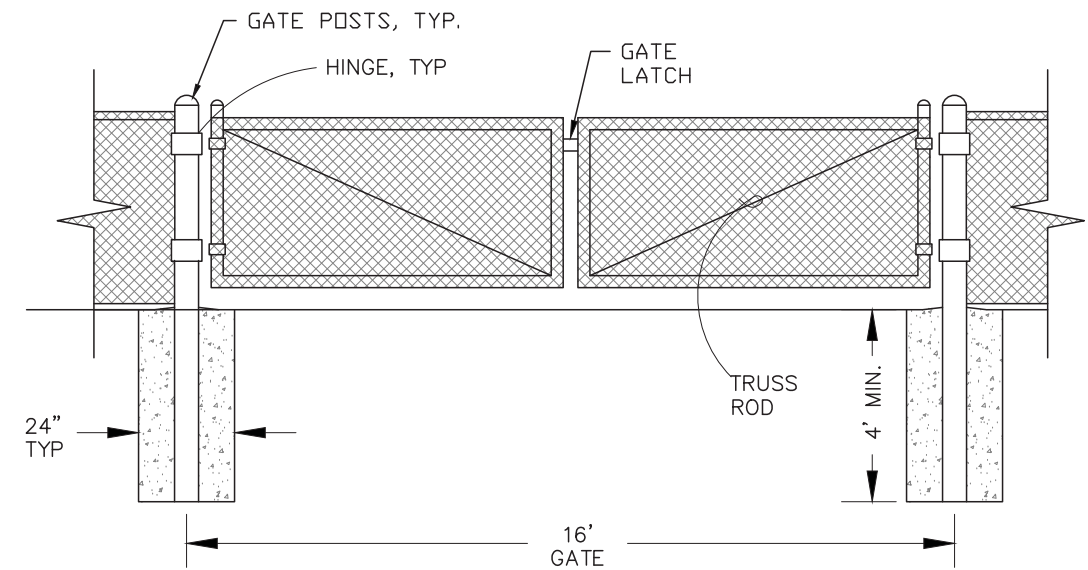
NOTE: PRIOR TO INSTALLING FENCE, LOCATE PROPERTY CORNERS TO VERIFY NO ENCROACHMENT ON ADJOINING PROPERTIES. INSTALL FENCE PARALLEL TO PROPERTY LINES 1'-0" INSIDE LINE.



DETAIL - 4' FENCE AND CORNER POST

SCALE: 1/4"=1'-0"

2



DETAIL - 16' DOUBLE SWING GATE

SCALE: 1/4"=1'-0"

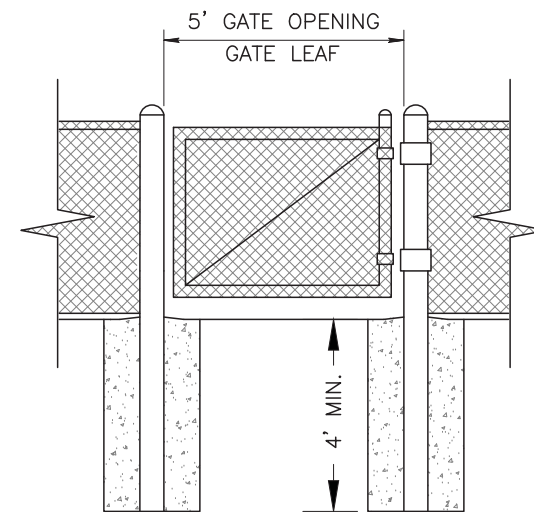
3

INSTALLATION NOTES:

1. FENCE FABRIC: FASTEN TO END AND CORNER POSTS WITH STRETCHER BARS AND FABRIC BANDS AT MAXIMUM 12" INTERVALS. FASTEN TO LINE POSTS, TOP AND BOTTOM RAILS WITH 9 GA TIE WIRE AT MAX. 12" INTERVALS. INSTALL WITH DRILL.
2. INSTALL FENCE FABRIC ON EXTERIOR OF FENCED ENCLOSURE.
3. BACKFILL FOR EXCAVATED SONO TUBES OR POST FORMS SHALL CONSIST OF BEDDING MATERIAL COMPACTED AS SPECIFIED.
4. REPAIR ALL DAMAGE TO GALVANIZED COATINGS WITH HEAT APPLIED HOT-STICK "REV-GALV", "GALV-WELD", OR "GALV-OVER" APPLIED IN ACCORDANCE WITH THE MANUFACTURERS RECOMMENDATIONS FOLLOWED BY A COAT OF ZINC RICH PAINT.
5. REPAIR ALL DAMAGE TO POLYMER COATINGS PER MFGRS RECOMMENDATIONS.

MATERIALS:

1. COAT FENCE FABRIC, POSTS, RAILS AND HARDWARE WITH PVC POLYMER COATING. COLOR TO BE SELECTED BY OWNER.
2. 4' FENCE CORNER AND END POSTS: 2-7/8" DIA., SCHED 40 STEEL, (2.875" O.D., 5.79#/FT. LENGTH, YIELD=50,000 PSI)
3. 4' FENCE LINE POSTS: 2-3/8" DIA. SCHED 40 STEEL, (2.375" O.D., 3.65#/FT. LENGTH, YIELD=50,000 PSI)
4. 16' WIDE GATE POSTS: 4.5" DIA. SCHED 40 STEEL (4.5" O.D., 10.79#/FT. LENGTH, YIELD=50,000 PSI).
5. 5' WIDE GATE POSTS: 2-7/8" DIA., SCHED 40 STEEL, (2.875" O.D., 5.79#/FT. LENGTH, YIELD=50,000 PSI)
6. 8' FENCE LINE AND END POSTS: 4.0" DIA. SCHED 40 STEEL (4.0" O.D., 9.11#/FT. LENGTH, YIELD=50,000 PSI).
7. ALL POSTS & RAILS: 1.8 OZ/SF HOT DIP GALVANIZED.
8. FENCE FABRIC: 2" MESH SIZE, 9 GAGE, (0.148" DIA. OF WIRE), 2 OZ/SF HOT DIP GALVANIZED, KNUCKLE SELVAGE TOP AND BOT.
9. RAILS AND POST BRACES: 1-5/8" DIA. SCHED 40 STEEL, (1.660" O.D., 2.27#/FT. LENGTH, YIELD=50,000 PSI), HOT DIP GALVANIZED.
10. TRUSS ROD: MINIMUM 3/8" DIA. NOMINAL, HOT DIP GALVANIZED.
11. STRETCHER BARS: MINIMUM 3/16" BY 3/4", HOT DIP GALVANIZED.



MAN GATE DETAIL

FOR BID
NOV. 11, 2019

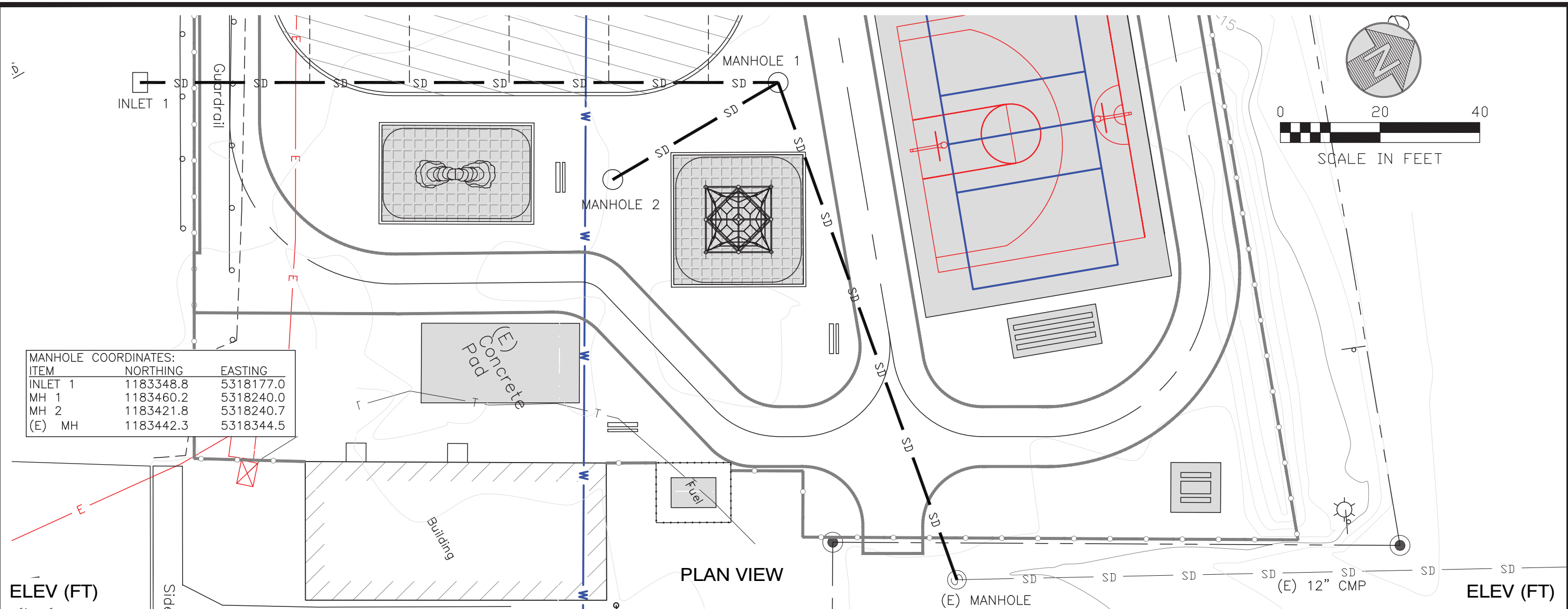
REGAN ENGINEERING, P.C.

PROJECT: **City of Unalaska
2020 PARK AND PLAYGROUND IMPROVEMENTS**

TITLE: **UCSD PARK
CHAIN LINK FENCE**

DESIGNED BY: TR DATE: 11/11/2019 SHEET NO:
CHECKED BY: TR PROJECT NOS: 19102, 15202

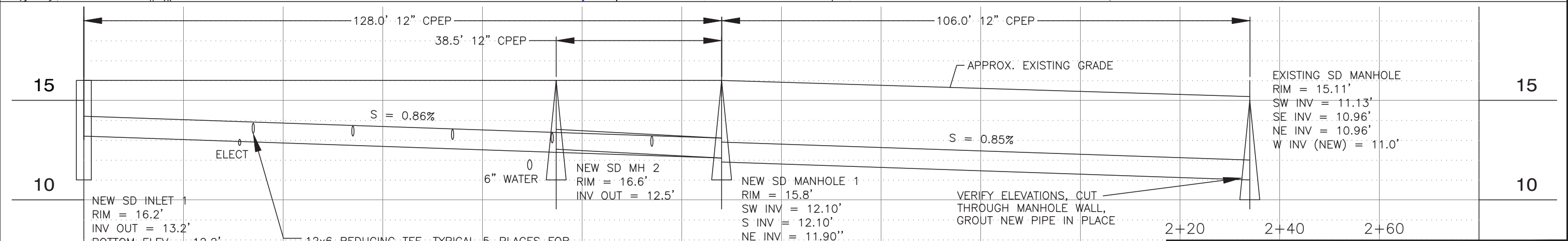
13 OF 30



MANHOLE COORDINATES:

ITEM	NORTHING	EASTING
INLET 1	1183348.8	5318177.0
MH 1	1183460.2	5318240.0
MH 2	1183421.8	5318240.7
(E) MH	1183442.3	5318344.5

PLAN VIEW



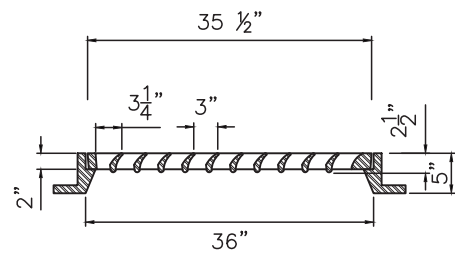
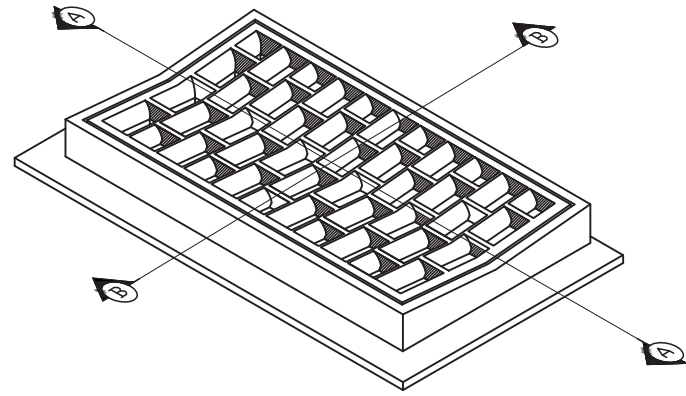
FOR BID
NOV. 11, 2019

REGAN ENGINEERING, P.C.

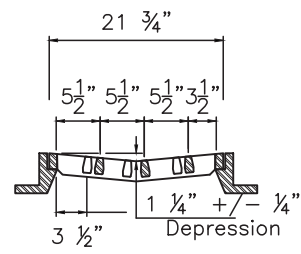
PROJECT: City of Unalaska
2020 PARK AND PLAYGROUND IMPROVEMENTS

TITLE: UCSD PARK
STORM DRAIN PLAN & PROFILE

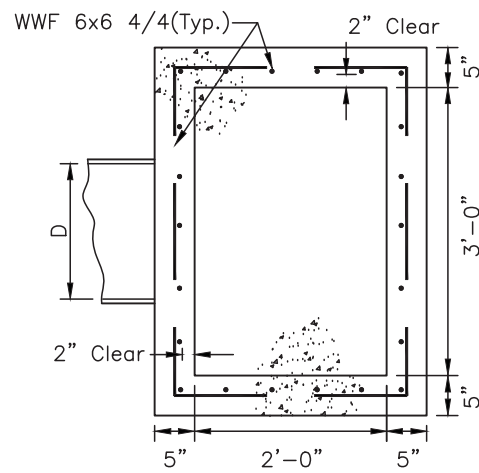
DESIGNED BY: TR DATE: 11/11/2019 SHEET NO: 14 OF 30
CHECKED BY: TR PROJECT NOS: 19102, 15202



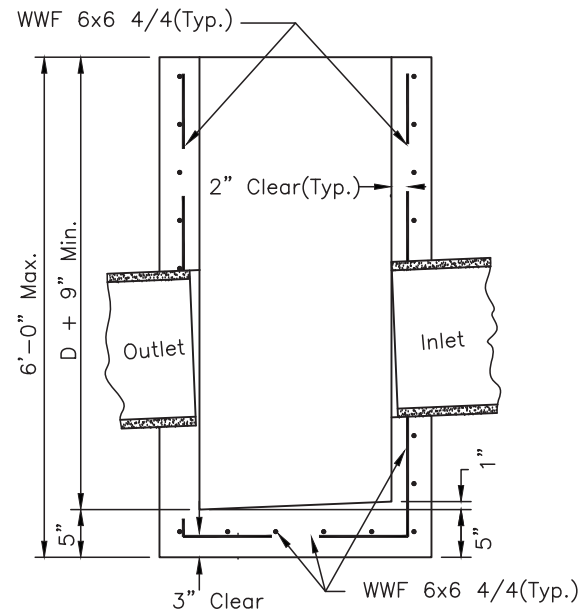
SECTION A-A



SECTION B-B



PLAN VIEW



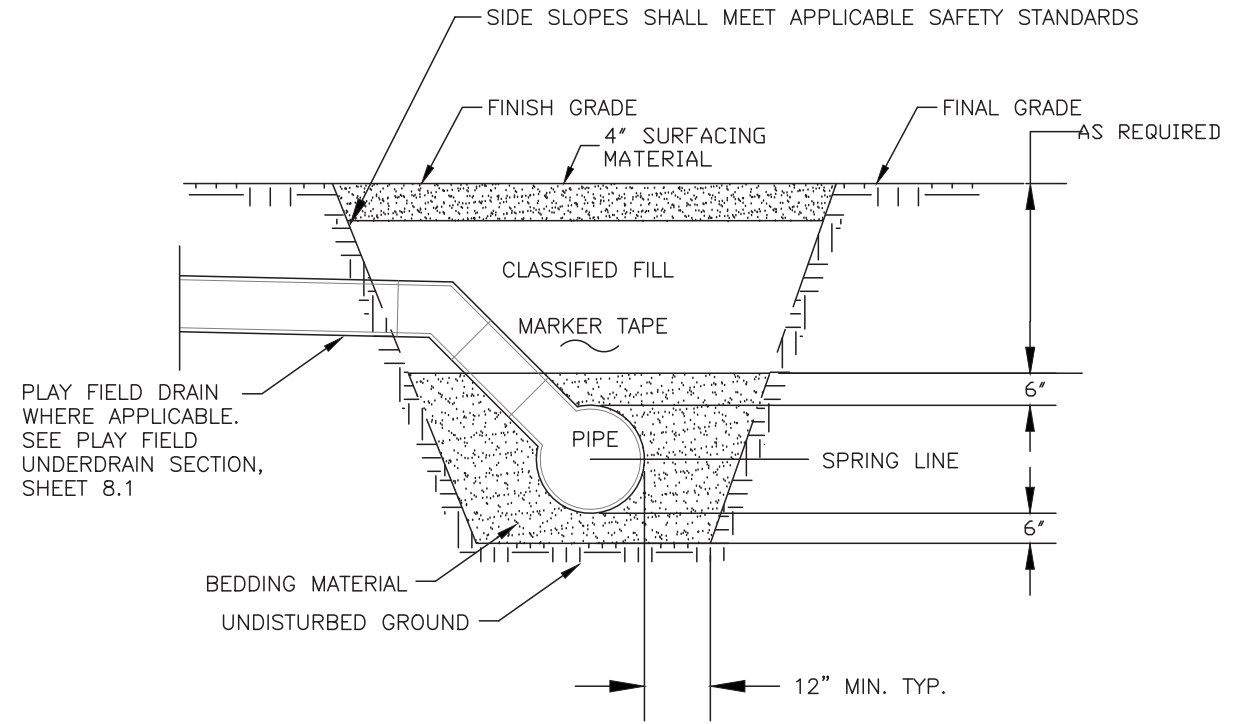
SECTION

DETAIL - STORM DRAIN INLET

NOT-TO-SCALE



NOTE: GRADE FINISHED SURFACE SMOOTH TO MATCH EXISTING ROAD.



NOTES:

1. BEDDING MATERIAL UNDER PIPE SHALL BE PLACED AND COMPACTED PRIOR TO INSTALLATION OF THE PIPE.
2. SUBSEQUENT BEDDING SHALL NOT BE PLACED ABOVE THE SPRING LINE OF THE PIPE IN A SINGLE LIFT.
3. ALL BEDDING SHALL BE COMPACTED TO A MINIMUM OF 95% MAXIMUM DENSITY

DETAIL - TRENCH SECTION

NOT-TO-SCALE



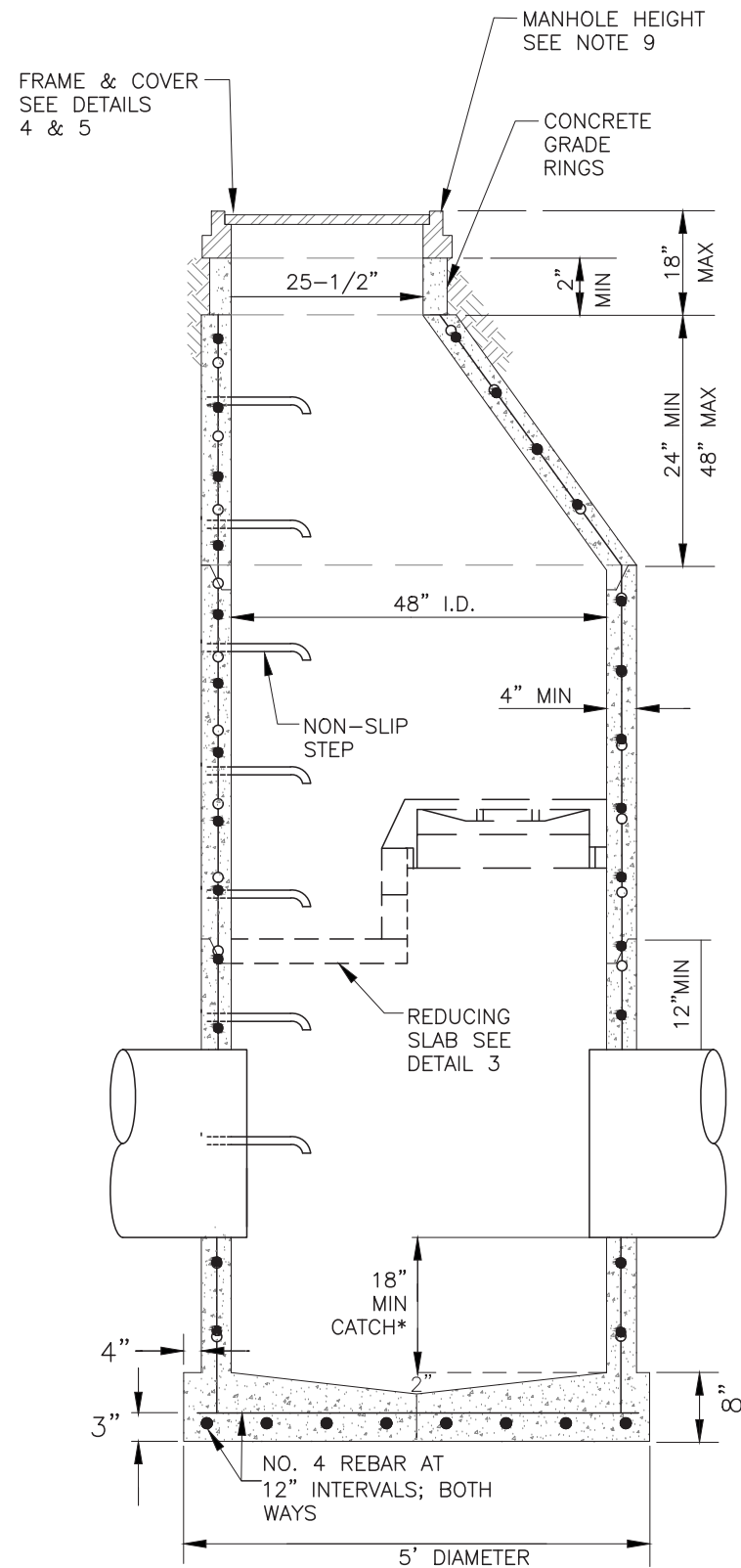
FOR BID
NOV. 11, 2019

REGAN ENGINEERING, P.C.

PROJECT: City of Unalaska
2020 PARK AND PLAYGROUND IMPROVEMENTS

TITLE: UCSD PARK
STORM DRAIN DETAILS

DESIGNED BY: TR DATE: 11/11/2019 SHEET NO: 14.1 OF 30
CHECKED BY: TR PROJECT NOS: 19102, 15202



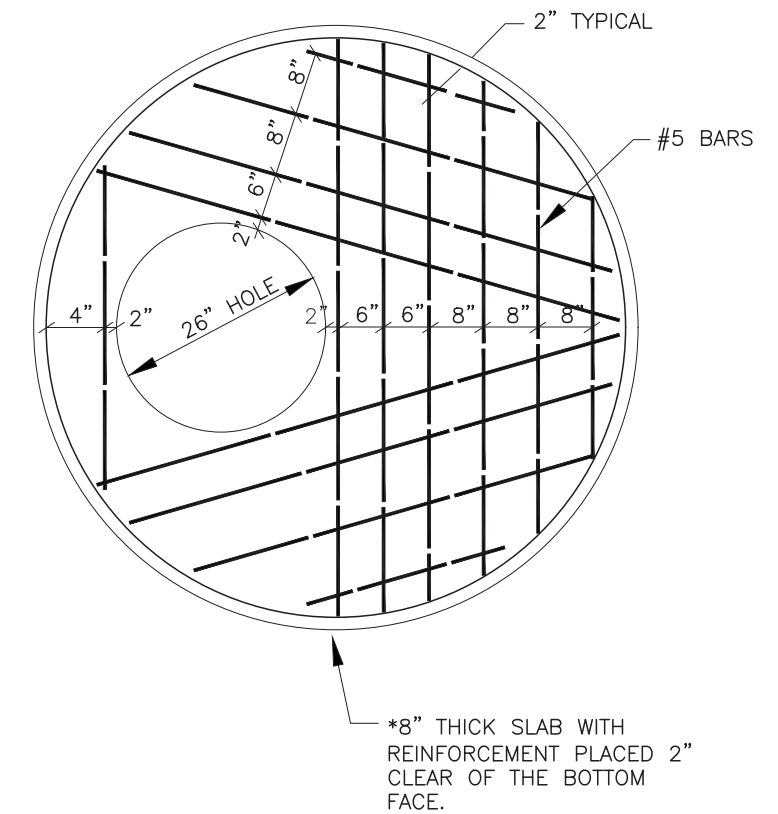
DETAIL – STORM DRAIN MANHOLE

NOT-TO-SCALE

1

NOTES:

1. MANHOLE SECTIONS SHALL CONFORM TO A.S.T.M. C-478.
2. EXTEND PIPE 2" INTO MANHOLE. SEAL PIPE PENETRATIONS WITH NON-SHRINKABLE GROUT MIXED WITH POTABLE WATER IN ACCORDANCE WITH MANUFACTURERS RECOMMENDATIONS.
3. BLOCKOUTS SHALL BE FORMED.
4. PLACE LADDER RUNGS 12" ON-CENTER ON UNOBSTRUCTED SIDE OF MANHOLE 18" MAX. FROM BOTTOM OF MANHOLE & 6" MAX. FROM TOP OF CONE. IF UNOBSTRUCTED SIDE NOT AVAILABLE, BOTTOM RUNG TO BE PLACED 6" OVER SMALLEST PIPE. WHEN USING FLAT SINGLE ACCESS LIDS, THE MAXIMUM DEPTH TO THE FIRST LADDER RUNG IS 28". RUNGS TO BE INJECTED MOLDED COPOLYMER POLYPROPYLENE.
5. MANHOLE SHALL HAVE MINIMUM OF ONE 4" GRADE RING.
6. BACKFILL AROUND MANHOLE WITH A MINIMUM OF 12" CLASSIFIED FILL & BACKFILL.
7. STEEL REQ'D FOR BARREL SHALL CONFORM TO A.S.T.M. C-478. EMBED STEEL IN BASE SO THAT FIRST BARREL SECTION IS CONNECTED WITH BASE.
8. "RAM-NEK" OR EQUAL AND PRIME BARREL JOINTS. HEAT "RAM-NEK" AND SEAL SURFACES BEFORE FINAL ASSEMBLY.
9. PROVIDE A 5'x5'x6" THICK CONCRETE SLAB WITH #4 REBAR AT 12" ON-CENTER EACH WAY AROUND FRAME OF MANHOLES AND INLET. PROVIDE SLOTTED LIDS ON MANHOLES.
10. FRAME AND LID ELEVATIONS SHOWN ON THE DRAWINGS ARE +/- APPROXIMATELY 0.2'.
11. PROVIDE ADJUSTMENTS USING GRADE RINGS TO DRAIN SURROUNDING AREAS.



*8" NOTE: CONCRETE REDUCING SLAB FOR MANHOLE PF-2 SHALL BE MINIMUM 1'-3" THICK AND DESIGNED TO AIRFIELD LOADING REQUIREMENTS PER NOTE WITH MANHOLE DETAIL THIS SHEET

DETAIL – CONCRETE REDUCING SLAB

NOT-TO-SCALE

2

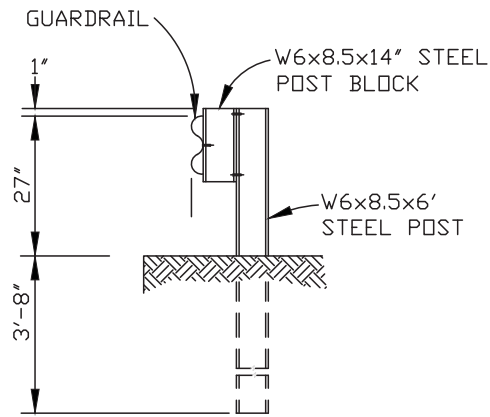
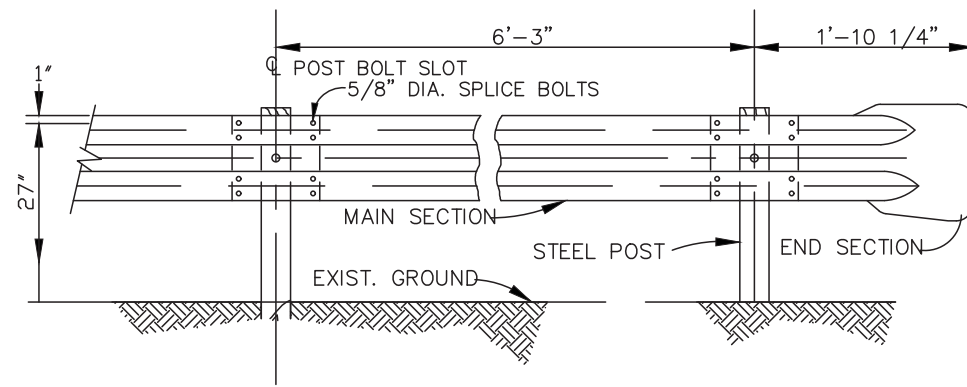
FOR BID
NOV. 11, 2019

REGAN ENGINEERING, P.C.

PROJECT: City of Unalaska
2020 PARK AND PLAYGROUND IMPROVEMENTS

TITLE: UCSD PARK
STORM DRAIN DETAILS

DESIGNED BY: TR DATE: 11/11/2019 SHEET NO: 14.2 OF 30
CHECKED BY: TR PROJECT NOS: 19102, 15202



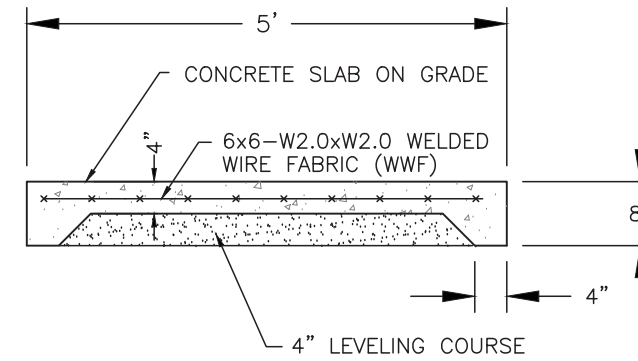
STEEL POST

GENERAL NOTES:

1. RELOCATE GUARDRAIL SYSTEM APPROXIMATELY 10' SOUTH OF ITS CURRENT LOCATION. REUSE ALL MATERIALS. ALIGN FACE OF RELOCATED GUARDRAIL WITH EXTENSION LINE OF BACK OF EXISTING SIDEWALK.
2. THERE ARE A TOTAL OF 19 POSTS AND TWO END SECTIONS.
3. BURY POSTS AND INSTALL RELOCATED GUARDRAIL AS DETAILED. BACKFILL WITH D-1 OR EQUIVALENT CRUSHED ROCK MATERIAL AND COMPACT TO 95% MAXIMUM DENSITY.
4. REPLACE DAMAGED SECTION(S) OF GUARDRAIL WITH CITY SUPPLIED MATERIALS.

GUARDRAIL DETAIL

NOT-TO-SCALE

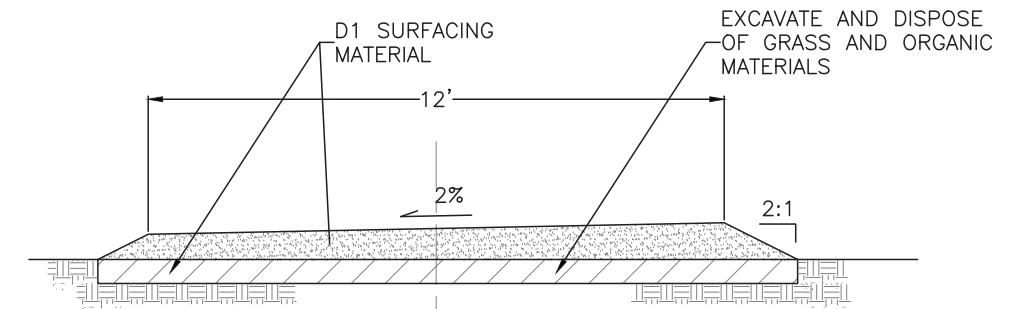
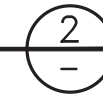


NOTES:

1. TOOL OR CUT 1/8" x 1/2" CONTROL JOINTS AT 5' INTERVALS. CAULK JOINTS WITH SEALANT.
2. BROOM FINISH SURFACE PERPENDICULAR TO DIRECTION OF TRAVEL.
3. INSTALL WELDED WIRE FABRIC IN MIDDLE OF SLAB.
4. CROSS SLOPE NEW SIDEWALK SURFACE 2% TO DRAIN TOWARDS PARKING LOT.

SECTION - CONCRETE SIDEWALK

SCALE: 1/2" = 1'-0"

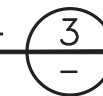


WIDEN SECTION OUT AT INTERSECTIONS AS SHOWN ON THE SITE IMPROVEMENT PLAN.

HEIGHT ABOVE GRADE VARIES. SEE DRAINAGE PLAN.

SECTION - GRAVEL TRAIL

SCALE: 1/4" = 1'-0"



FOR BID
NOV. 11, 2019

REGAN ENGINEERING, P.C.

PROJECT: City of Unalaska
2020 PARK AND PLAYGROUND IMPROVEMENTS

TITLE: UCSD PARK
MISCELLANEOUS DETAILS

DESIGNED BY: TR DATE: 11/11/2019 SHEET NO: 15 OF 30
CHECKED BY: TR PROJECT NOS: 19102, 15202

TRACT A-1
SITKA SPRUCE PLANTATION
PLAT NO. 82-33

196,763.5 sq.ft.
4.52 acres

LAKE SURFACE
ELEV. 27.25'
N 51-28.4
(AP. PHOTO)

MAKUSHIN SUBDIVISION
PLAT NO. 92-40

NOTES:

TWO ACTIVE ALASKA DEPT OF ENVIRONMENTAL CONSERVATION (ADEC) IDENTIFIED CONTAMINATED SITES BORDER THIS PARK. IN 2018, THE CITY CONTRACTED WITH TRAVIS/PETERSON ENVIRONMENTAL CONSULTING, INC. (TPECI) TO CONDUCT A SITE CHARACTERIZATION OF THE SOILS AND GROUNDWATER TO ASSURE THE SITE IS SUITABLE FOR THE PROPOSED IMPROVEMENTS.

SEVEN TESTHOLES (TH) WERE EXCAVATED TO APPROXIMATELY 4' BELOW GROUND SURFACE (BGS). GROUNDWATER WAS ENCOUNTERED IN 6 OF THE 7 TESTHOLES APPROXIMATELY 4' BGS. TESTHOLE 3 ENCOUNTERED BEDROCK AT 3' BGS SO WATER WAS NOT ENCOUNTERED. DETECTABLE QUANTITIES OF CONTAMINATION WERE ENCOUNTERED BUT ALL SAMPLES TESTED BELOW ADEC CLEANUP LEVELS EXCEPT FOR VOLATILE ORGANIC COMPOUNDS (VOC's) IN TH6.

NO WATER SAMPLES HAD DETECTABLE LEVELS OF CONTAMINATION EXCEPT TH7 EXCEEDED DIESEL RANGE ORGANICS (DRO) CLEANUP LEVELS.

THE REPORT AND SUBSEQUENT ADEC APPROVAL AGREE THAT HUMAN HEALTH EXPOSURE PATHWAYS ARE INCOMPLETE AND THE SITE IS SUITABLE FOR THE INTENDED IMPROVEMENTS. CONSTRUCTION NEAR THE SEPARATOR WALL AND BASKETBALL COURT (TH7) WAS APPROVED SO LONG AS GROUNDWATER IS NOT EXPOSED OR REMOVED DURING CONSTRUCTION. AS SUCH, DEWATERING IN THIS AREA IS NOT ALLOWED. THE TPECI STUDY IS AVAILABLE UPON REQUEST.



LEGEND
 ● TESTHOLE, Travis Peterson Investigation 2018
 TH 1
 x SPOT ELEVATION

PLAN VIEW
 SCALE: 1"=60'-0"

1

FOR BID
NOV. 11, 2019

REGAN ENGINEERING, P.C.

PROJECT: City of Unalaska
2020 PARK AND PLAYGROUND IMPROVEMENTS

TITLE: SITKA SPRUCE PARK
EXISTING SITE

DESIGNED BY:	TR	DATE:	11/11/2019	SHEET NO:	16 OF 30
CHECKED BY:	TR	PROJECT NOS:	19102, 15202		



REMOVE AND DISPOSE OF
PLAYGROUND EQUIPMENT,
BORDER, RUBBER SAFETY
TILES

REMOVE WOOD FENCE WHERE SHOWN

PARK SIGN
TO REMAIN

FOR BID
NOV. 11, 2019



PLAN VIEW

SCALE: 1"=60'-0"

1
-

REGAN ENGINEERING, P.C.			
PROJECT:		City of Unalaska 2020 PARK AND PLAYGROUND IMPROVEMENTS	
TITLE:		SITKA SPRUCE PARK DEMOLITION PLAN	
DESIGNED BY:	TR	DATE:	11/11/2019
CHECKED BY:	TR	PROJECT NOS:	19102, 15202
			SHEET NO: 17 OF 30



PYRAMID CLIMBER, 26'x26'
RUBBER SAFETY TILE WITH
BORDER
SEE SHEET 11

PARK BENCH, TYP
SEE SHEET 25

42'x52' PLAYGROUND,
RUBBER SAFETY TILE WITH
BORDER, SEE SHEET 19

SEPARATOR WALL,
SEE SHEET 23

SUMMIT ROCK CLIMBER,
18'x20' RUBBER SAFETY
TILE WITH BORDER, SEE
SHEET 20

1/2-COURT BASKETBALL
SEE SHEET 21

NEW WOOD FENCE,
SEE SHEET 22

SEE SHEET 18.1 FOR
BLOWUP DETAIL THIS
AREA



SCALE IN FEET

- NOTES:
1. ALL EXISTING SPRUCE TREES NEED TO REMAIN UNDISTURBED.
 2. LOCATIONS OF PARK IMPROVEMENTS SHOWN ARE APPROXIMATE. THE FINAL LOCATIONS SHALL BE JOINTLY STAKED BY THE CONTRACTOR AND OWNER.

PLAN VIEW

SCALE: 1"=60'-0"



FOR BLDG
NOV. 11, 2019

REGAN ENGINEERING, P.C.

PROJECT: City of Unalaska
2020 PARK AND PLAYGROUND IMPROVEMENTS

TITLE: SITKA SPRUCE PARK
DEVELOPMENT & LAYOUT PLAN

DESIGNED BY: TR	DATE: 11/11/2019	SHEET NO:
CHECKED BY: TR	PROJECT NOS: 19102, 15202	18 OF 30



LANDSCAPE DIVIDER AROUND TREE

REMOVE GRASS INSIDE OF FENCE, INSTALL 6" OF COMPACTED SURFACING COURSE

NEW FENCE, 252 LF SEE SHEET 22

NEW CONCRETE SLAB-ON-GRADE BASKETBALL HALF-COURT; SEE SHEETS 21 & 9 FOR DIMENSIONS AND DETAILS

TRASH CAN, SEE SHEET 25

GRILL, SEE SHEET 25

12' GATE, SEE SHEET 22 FIELD LOCATE W/OWNER

5,580 SF GRAVEL PARKING AREA

NEW CROSS FENCE & GATE, 82 LF INCL. GATE, SEE SHEET 22

SEPARATOR WALL, 135 LF +/- SEE SHEET 23

CONSTRUCT WOOD FENCE TO CLOSE GAP BETWEEN EXISTING FENCE AND NEW WALL

BIORKA DRIVE

5015

50



0 20 40



SCALE IN FEET

PARKING/ENTRY - PLAN VIEW

SCALE: 1"=20'-0"



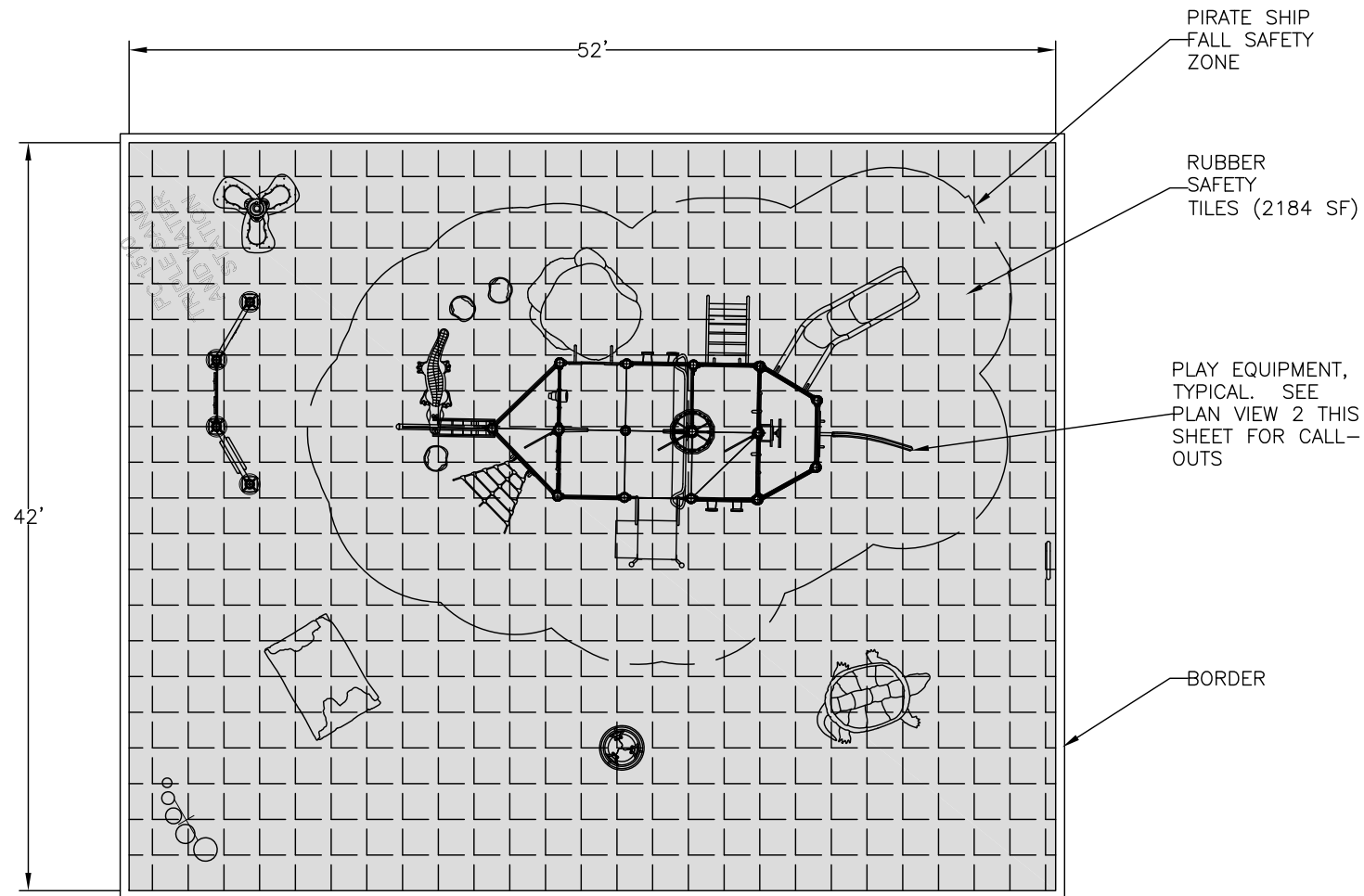
FOR BID
NOV. 11, 2019

REGAN ENGINEERING, P.C.

PROJECT: City of Unalaska
2020 PARK AND PLAYGROUND IMPROVEMENTS

TITLE: SITKA SPRUCE PARK
DEVELOPMENT PLAN ENTRY

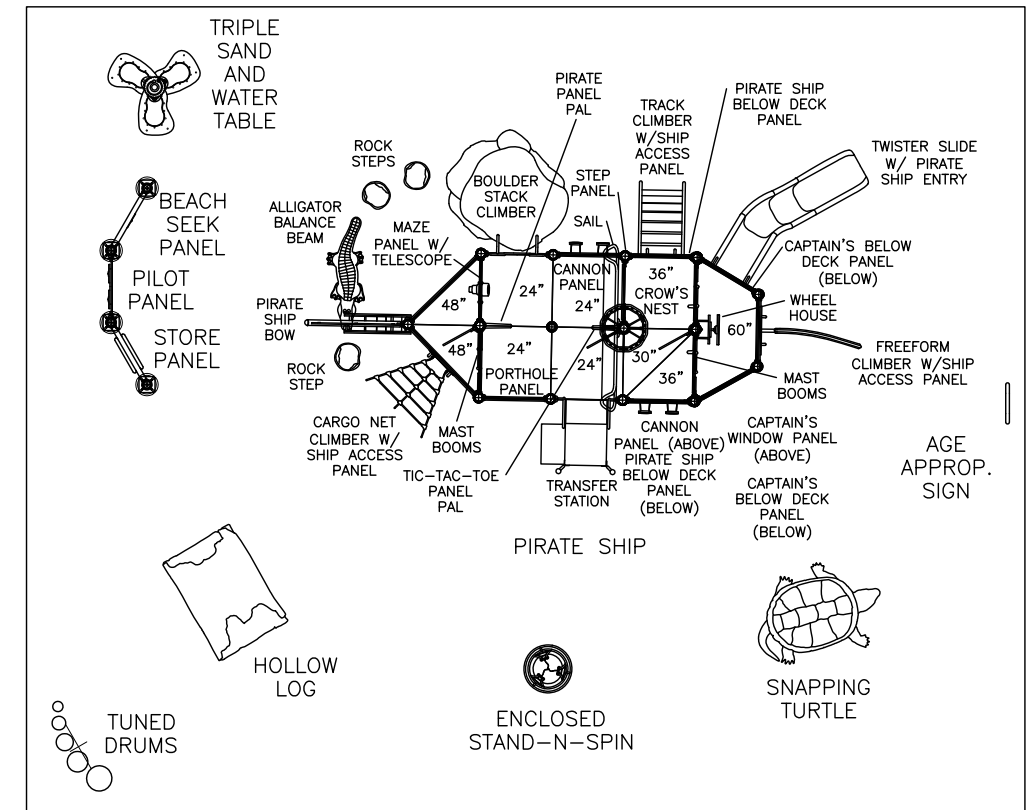
DESIGNED BY: TR	DATE: 11/11/2019	SHEET NO:
CHECKED BY: TR	PROJECT NOS: 19102, 15202	18.1 OF 30



PLAN VIEW – PLAYGROUND

SCALE: 1"=10'-0"

1



PLAN VIEW – PLAY EQUIPMENT

SCALE: 1"=10'-0"

2

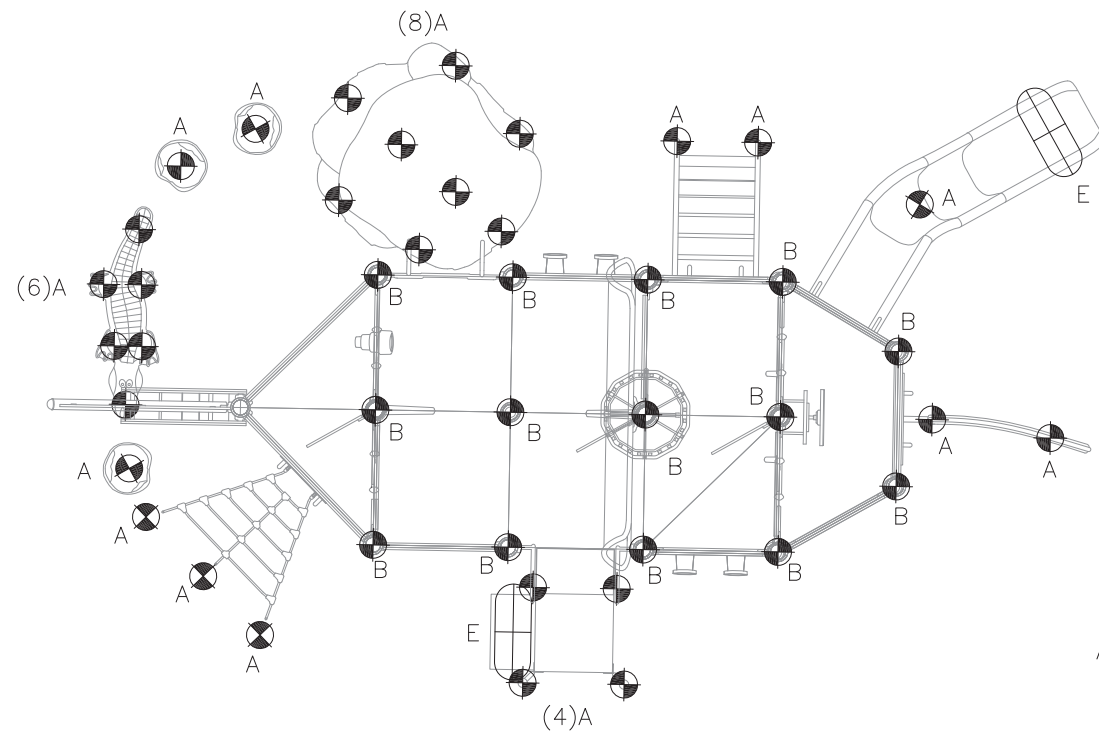
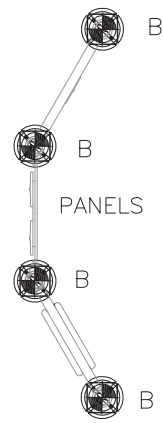
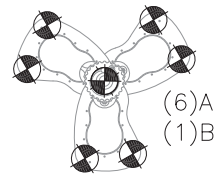
GENERAL NOTES:

1. PLAY EQUIPMENT SUPPLIER SHALL CONFIRM THE USE ZONE AND THE RUBBER SAFETY TILE THICKNESS ARE APPROPRIATE FOR THE SUPPLIED PLAY EQUIPMENT. PROVIDE LAYOUT AND DIMENSION PLAN TO DEMONSTRATE EQUIPMENT IS LOCATED TO LIMIT FALL SAFETY ZONES TO RUBBER SAFETY TILE AREA.
2. PLAY EQUIPMENT BASED ON PLAYCRAFT SYSTEMS MODELS R5066589A (PIRATE SHIP), FREPCTC030 (SNAPPING TURTLE), FREPC1510 (TRIPLE SAND AND WATER TABLE), FREPC2474 (ENCLOSED SAND-N-SPIN), FREPCAP008 (HOLLOW LOG), R50B17E9A (STORE PANEL, PILOT PANEL, BEACH SEEK PANEL), FREPCFTDNPNGAN (TUNED DRUMS), AND STAPC1303 (AGE APPROPRIATE SIGN). SEE SPECIFICATIONS FOR ADDITIONAL INFORMATION.
3. SEE DETAIL 1 SHEET 24 FOR PLAY AREA, SUBSURFACE AND BORDER DETAILS.
4. SEE SHEET 19.1 FOR PLAY EQUIPMENT FOUNDATION REQUIREMENTS.
5. SLOPE PLAYGROUND SURFACING A MINIMUM OF 1% IN THE DIRECTION OF PREVAILING GRADES.

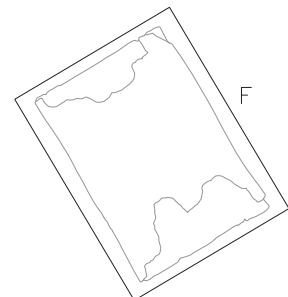
FOR BID
NOV. 11, 2019

REGAN ENGINEERING, P.C.	
PROJECT:	City of Unalaska 2020 PARK AND PLAYGROUND IMPROVEMENTS
TITLE:	SITKA SPRUCE PARK PLAYGROUND
DESIGNED BY:	TR DATE: 11/11/2019
CHECKED BY:	TR PROJECT NOS: 19102, 15202
SHEET NO: 19 OF 30	

TRIPLE SAND AND WATER TABLE



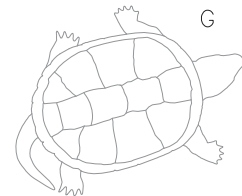
AGE APPROPRIATE SIGN



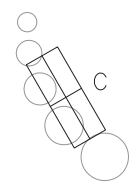
HOLLOW LOG



STAND-N-SPIN



SNAPPING TURTLE



TUNED DRUMS

EDGE OF RUBBER SAFETY SURFACING

PLAY EQUIPMENT FOUNDATION SCHEDULE

FOOTING TYPE	SIZE			QUANTITY
	WIDTH	LENGTH	DEPTH	
A	12"	12"	18"	37
B	18"	18"	30"	15
C	27"	67"	12"	1
D	24"	24"	30"	1
E	12"	24"	25"	2
F	60"	78"	6"	1
G	-	-	-	1

FOUNDATION NOTES:

- SEE SHEET 19 FOR GENERAL PLAY EQUIPMENT AND COORDINATION NOTES.
- COORDINATE WITH PLAY EQUIPMENT MANUFACTURER FOR LAYOUT, EQUIPMENT FOUNDATION LOCATIONS, EQUIPMENT FOUNDATION CONSTRUCTION REQUIREMENTS, DEPTHS BELOW FINISHED GRADE, CONNECTIONS AND DETAILS. ALL FOOTINGS TO BE CONCRETE WITH MINIMUM DIMENSIONS AS TABULATED ABOVE. LOCATE TOP OF FOOTINGS BELOW GRADE AS DETAILED AND AS REQUIRED BY MANUFACTURER.
- FOOTINGS C, D, E & F SHALL HAVE #4 BARS INSTALLED AT 12" O.C. EACH WAY MID-SLAB.
- THE SNAPPING TURTLE (G) HAS AN INTEGRAL FOOTING, WHICH SITS DIRECTLY ON COMPACTED LEVELING COURSE.

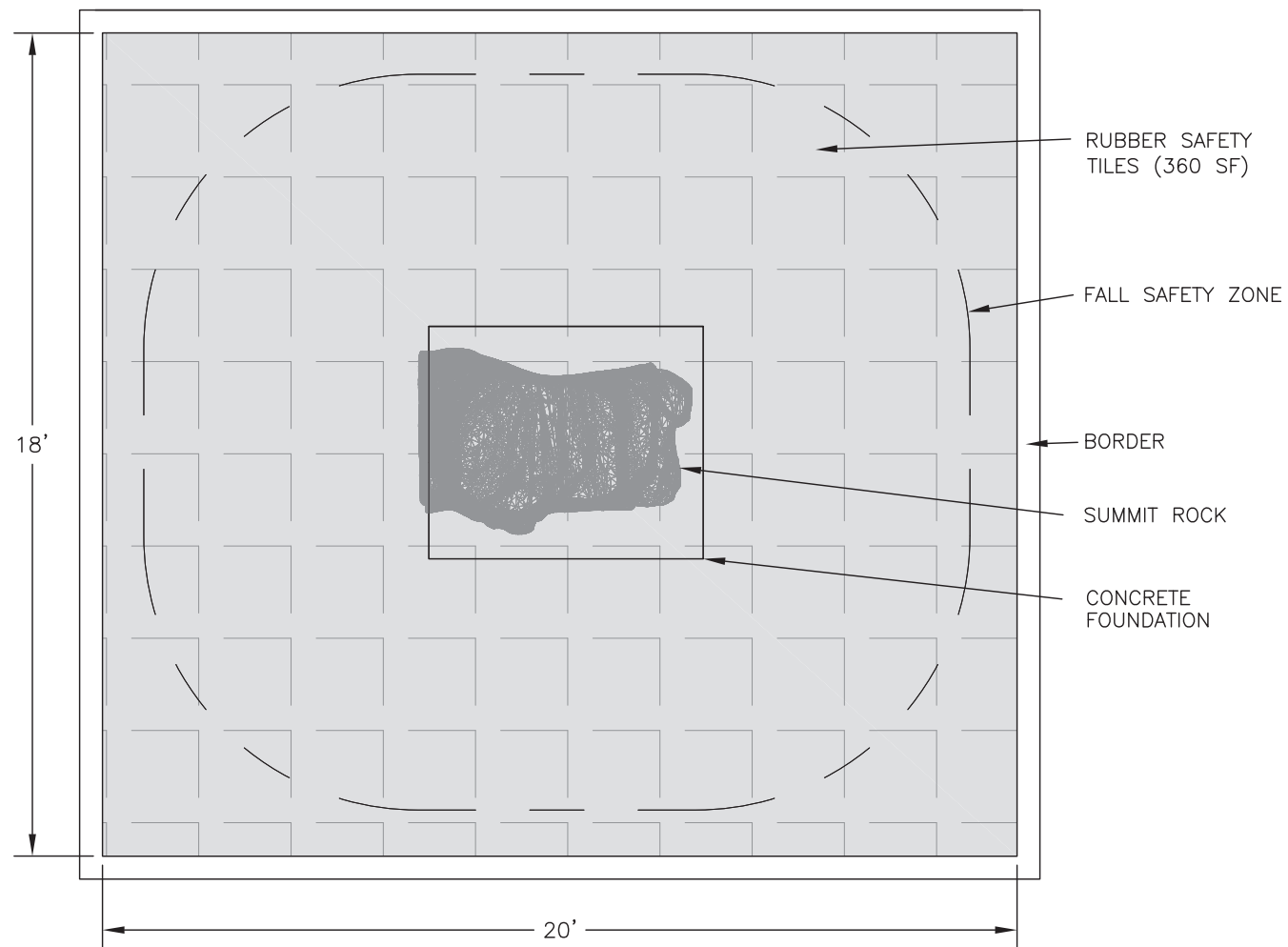
PLAN VIEW – PLAY EQUIPMENT FOOTINGS

SCALE: 3/16"=1'-0"



FOR BID
NOV. 11, 2019

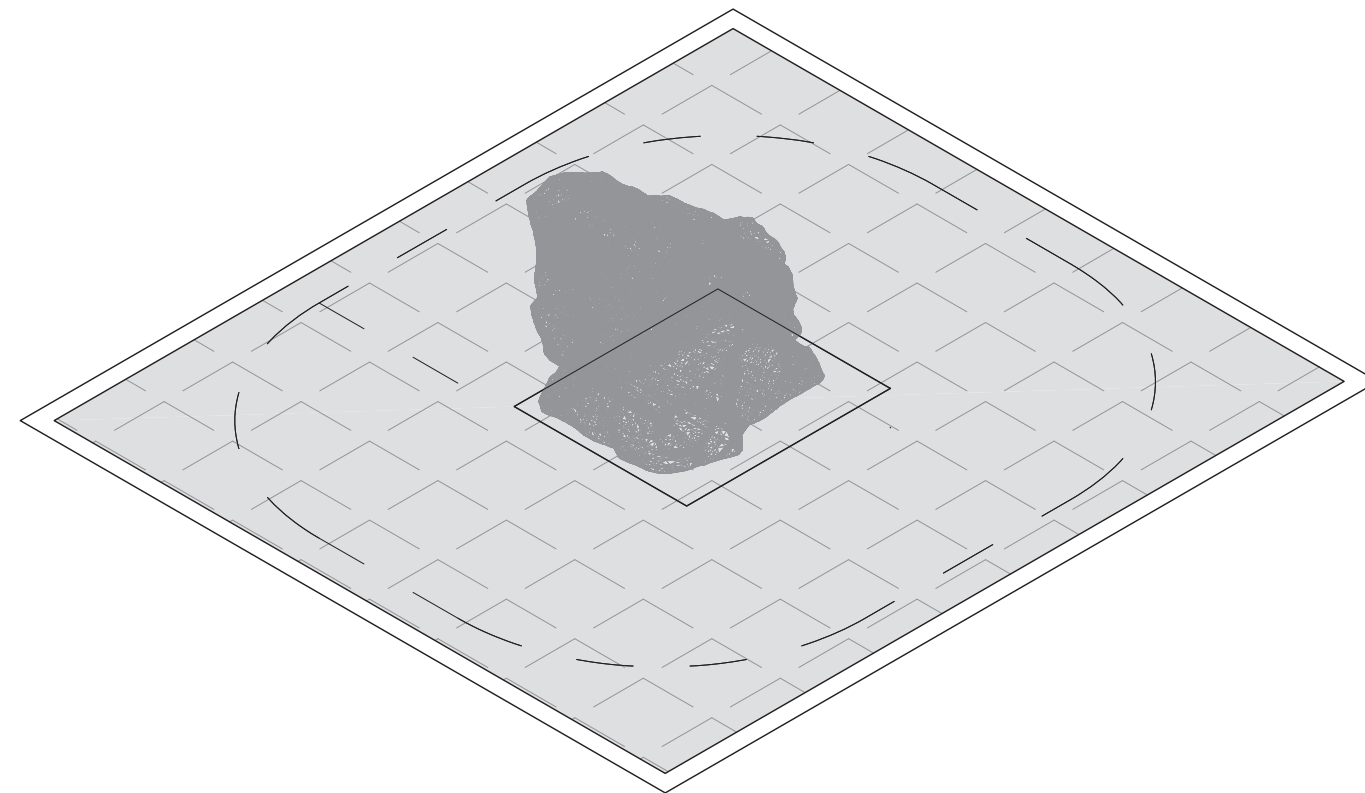
PROJECT: City of Unalaska 2020 PARK AND PLAYGROUND IMPROVEMENTS	
TITLE: SITKA SPRUCE PARK PLAYGROUND FOUNDATIONS	
DESIGNED BY: TR	DATE: 11/11/2019
CHECKED BY: TR	PROJECT NOS: 19102, 15202
SHEET NO: 19.1 OF 30	



PLAN VIEW – SUMMIT ROCK

SCALE: 1/4"=1'-0"

1
-



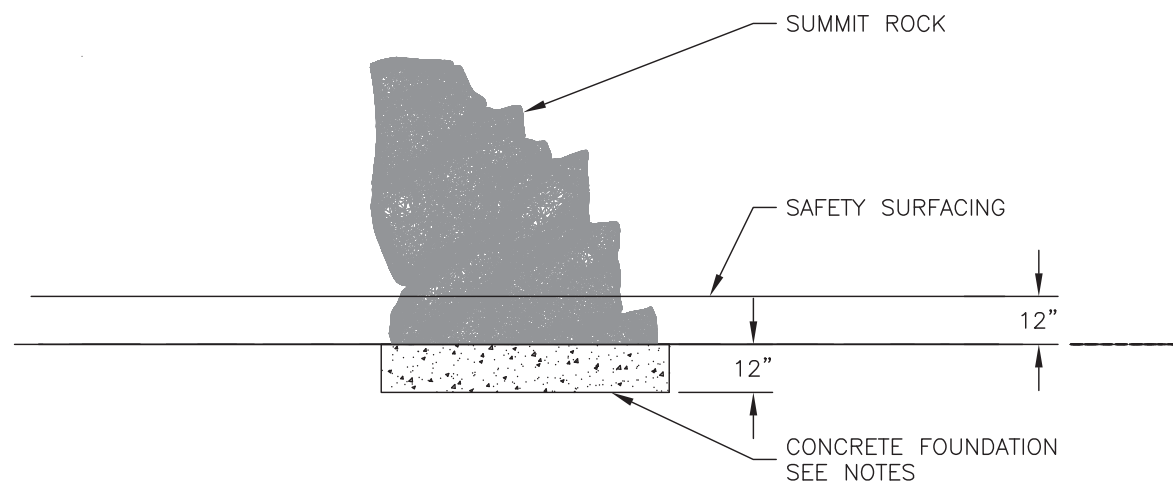
ISOMETRIC VIEW – SUMMIT ROCK

SCALE: 1/4"=1'-0"

2
-

GENERAL NOTES:

1. DESIGN BASED ON "SUMMIT ROCK (LARGE), PLAYCRAFT FREPCCB008".
2. CONFIRM THE USE ZONE AND THE RUBBER SAFETY TILE THICKNESS ARE APPROPRIATE FOR THE SUPPLIED EQUIPMENT.
3. CONFIRM DIMENSIONS WITH SUPPLIED PLAY EQUIPMENT.
4. SEE DETAIL 1 SHEET 24 FOR PLAY SURFACING, SUBGRADE AND BORDER DETAILS.
5. CENTER PLAY EQUIPMENT IN RUBBER SAFETY TILE AREA.
6. CONCRETE FOUNDATION: 72"L x 61"W x 12"H WITH #5 BARS AT 12" O.C. EACH WAY. CONNECT (4) ALUMINUM ANGLE MOUNTING BRACKETS WITH (1) 5/8" x 8-1/2" SS WEDGE ANCHORS WITH 7-1/2" EMBEDMENT.



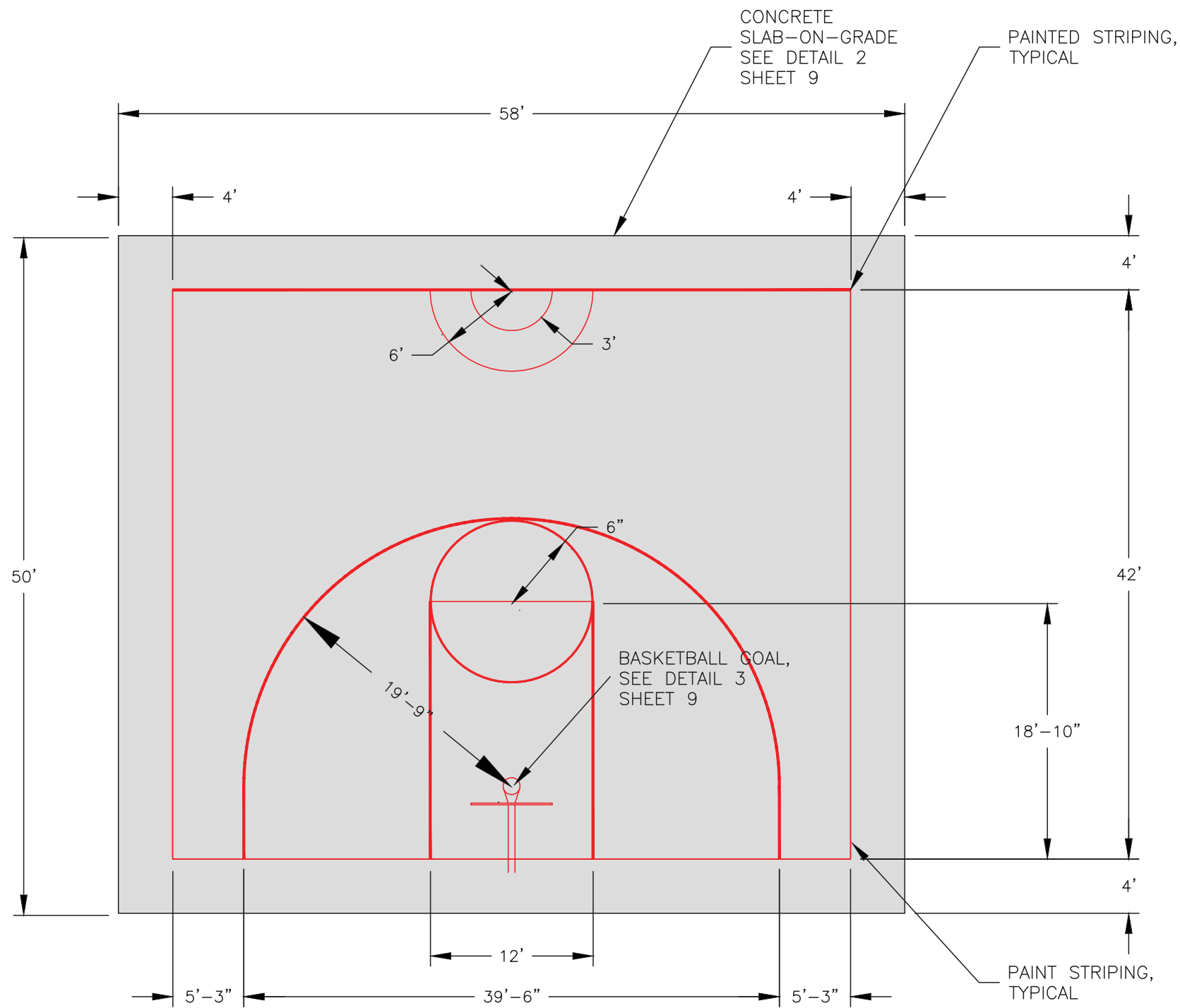
FRONT VIEW – SUMMIT ROCK

SCALE: 1/4"=1'-0"

3
-

FOR BID
NOV. 11, 2019

REGAN ENGINEERING, P.C.	
PROJECT:	City of Unalaska 2020 PARK AND PLAYGROUND IMPROVEMENTS
TITLE:	SITKA SPRUCE PARK SUMMIT ROCK
DESIGNED BY: TR	DATE: 11/11/2019
CHECKED BY: TR	PROJECT NOS: 19102, 15202
SHEET NO: 20 OF 30	



PLAN VIEW – SWING SET

SCALE: 1"=10'-0"

1
-

NOTE: CROWN COURT AT CENTERLINE AND SLOPE SURFACE GRADE AT 1% EACH WAY TOWARDS SIDES FOR DRAINAGE.



SCALE IN FEET

FOR BID
NOV. 11, 2019

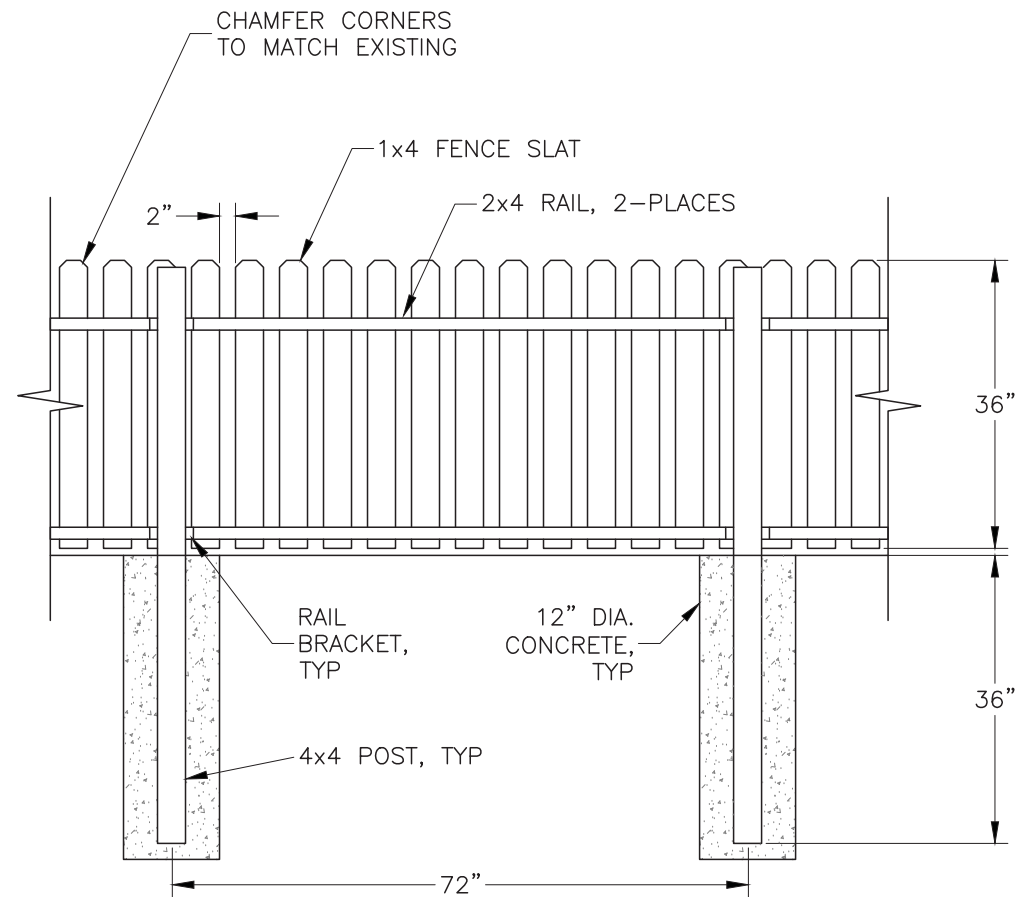
REGAN ENGINEERING, P.C.

PROJECT: City of Unalaska
2020 PARK AND PLAYGROUND IMPROVEMENTS

TITLE: SITKA SPRUCE PARK
BASKETBALL COURT

DESIGNED BY: TR DATE: 11/11/2019 SHEET NO:
CHECKED BY: TR PROJECT NOS: 19102, 15202

21 OF 30

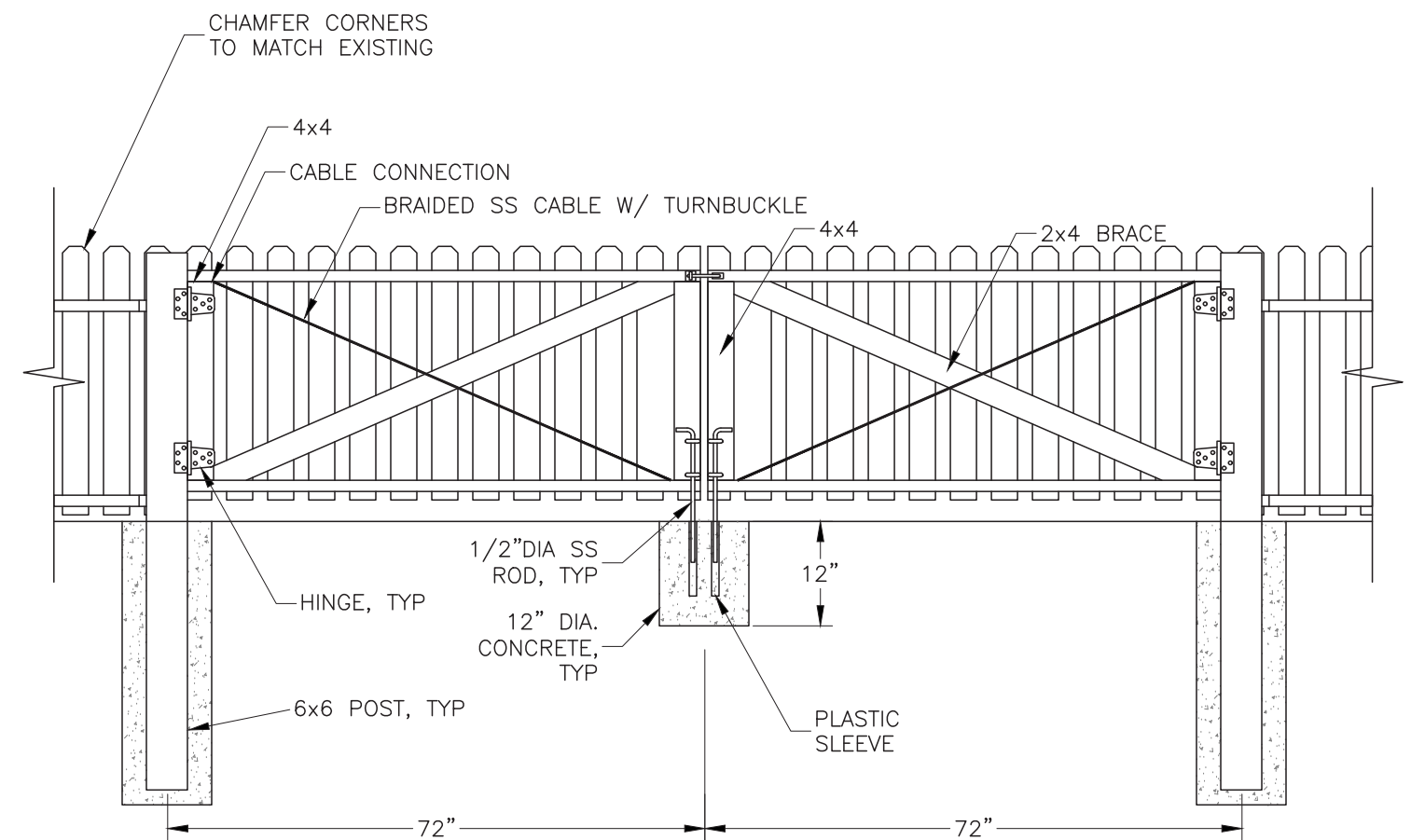


NOTES/SPECIFICATIONS:

1. GENERAL: CONSTRUCT FENCE SO APPEARANCE MATCHES EXISTING. CONSTRUCT STRAIGHT AND PLUMB. TIE TO EXISTING FENCE WHERE DESIGNATED TO REMAIN.
2. POSTS: GROUND CONTACT ALL WEATHER WOOD, PRESSURE TREATED, AMERICAN WOOD PROTECTION ASSOCIATION (AWPA) UC4A RATED.
3. RAILS: WESTERN RED CEDAR, 2x4, S4S, KILN DRIED, SELECT NO. 2 CLEAR & BETTER GRADE.
4. SLATS: WESTERN RED CEDAR, 3/4" THICK 1x4, S4S, SELECT NO. 2 CLEAR & BETTER GRADE.
5. SCREW FASTENERS: #10x2", 316 STAINLESS STEEL, SIMPSON T10200WPB. INSTALL (2) PER SLAT AT EACH RAIL. PRE-DRILL NEAR SLAT ENDS TO PREVENT SPLITTING. SPLIT SLATS SHALL BE REPLACED.
6. RAIL BRACKETS: SIMPSON ML23Z ANGLES, (1) EA AT BOTTOM OF EACH RAIL W/ (4) 1/4" X 1-1/2" SDS FASTENERS, ALL 316 STAINLESS STEEL.
7. CONCRETE: 3,000 PSI COMPRESSIVE STRENGTH, 4-6% ENTRAINED AIR, MAX. SLUMP 4".
8. FENCE TREATMENT: IMMEDIATELY AFTER INSTALLATION AND BEFORE WEATHERING, USE SPRAYER TO SPRAY AND BACKROLL TEAK OIL ON NEW FENCE AFTER INSTALLATION. APPLY TWO APPLICATIONS TO ALL EXPOSED WOOD.
9. PROVIDE SUBMITTALS FOR ALL FENCE AND GATE MATERIALS SPECIFIED THIS SHEET.

DETAIL – WOOD FENCE

SCALE: 1/2"=1'-0"



NOTES/SPECIFICATIONS:

1. GENERAL: GATE MATERIALS AND LAYOUT SHALL MATCH WOOD FENCE DETAIL 1 NOTES/SPECIFICATIONS.
2. CABLE: 1/8"-1x19 SS316 BRAIDED STAINLESS STEEL WITH TURNBUCKLE. SECURELY ATTACH AT ENDS USING EYEBOLTS EXTENDED THROUGH 4X4'S. ALL MATERIALS AND HARDWARE SHALL BE STAINLESS STEEL.
3. HINGES, LATCH, STOP RODS, FASTENERS, AND MISCELLANEOUS HARDWARE SHALL BE STAINLESS STEEL. HINGE DESIGN BASED ON STANLEY TEE HINGES WITH 3-3/8" STRAPS.

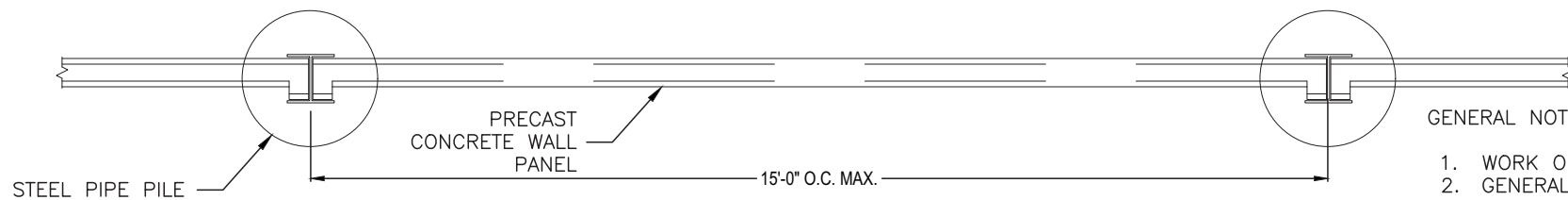
DETAIL – WOOD FENCE GATE

SCALE: 1/2"=1'-0"



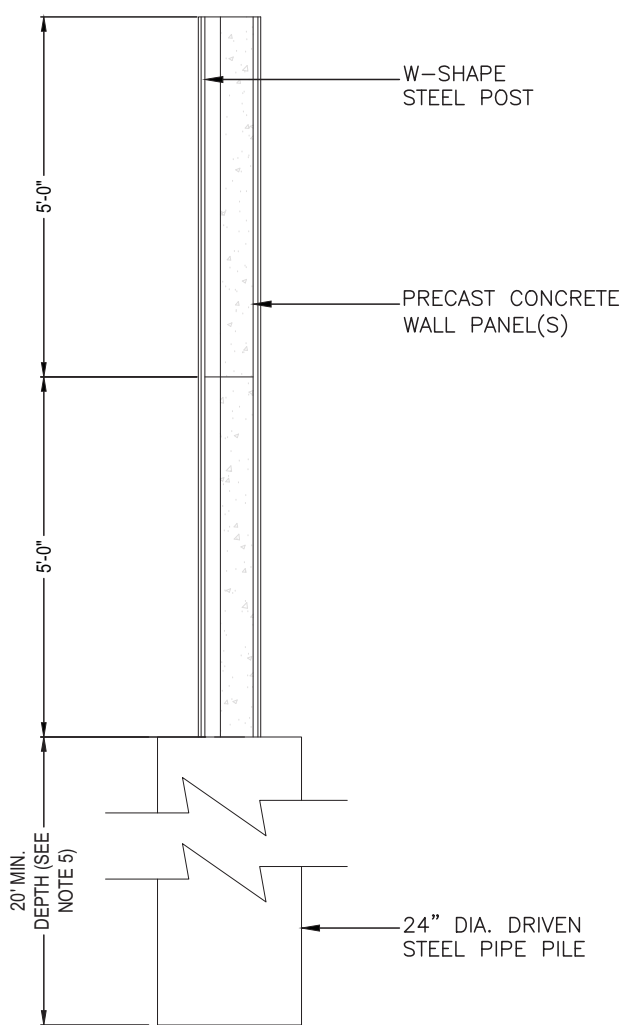
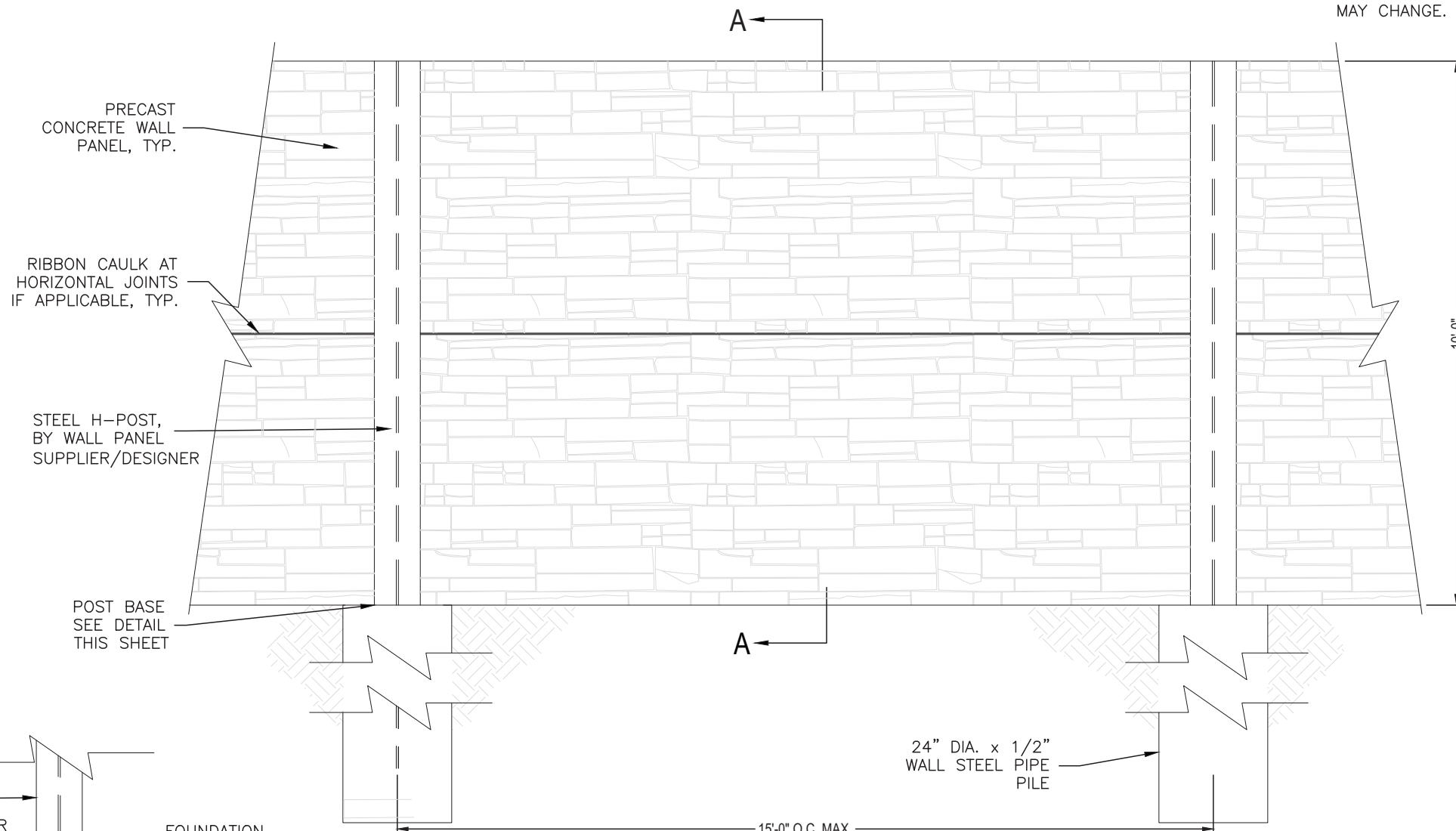
FOR BID
NOV. 11, 2019

REGAN ENGINEERING, P.C.			
PROJECT:		City of Unalaska 2020 PARK AND PLAYGROUND IMPROVEMENTS	
TITLE:		SITKA SPRUCE PARK WOOD FENCE	
DESIGNED BY:	TR	DATE:	11/11/2019 SHEET NO:
CHECKED BY:	TR	PROJECT NOS:	19102, 15202
			22 OF 30

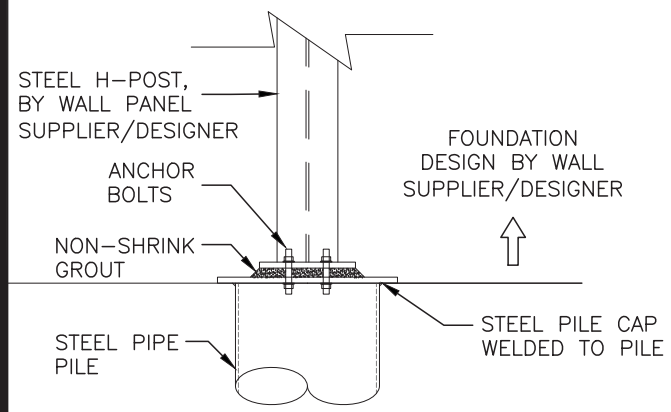


- GENERAL NOTES:
1. WORK ON THIS SHEET COMPRISES ADDITIVE ALTERNATE 1.
 2. GENERAL: CONSTRUCT WALL WHERE SHOWN. LOCATE SO FOUNDATIONS AND APPURTENANCES ARE ON CITY PROPERTY.
 3. ALL STEEL SHALL BE HOT-DIP GALVANIZED PER ASTM A123.
 4. CONCRETE PANELS SHALL BE PRECAST WITH COLOR AND PATTERN. PATTERN WILL BE SELECTED BY OWNER DURING SUBMITTAL PROCESS.
 5. SEE SHEET 16 FOR SUBSURFACE INFORMATION. EXCAVATION AND DEWATERING ARE NOT ALLOWED IN THIS AREA.
 6. PRECAST CONCRETE PANELS, POSTS, AND PILE CAP/POST BASE/CONNECTION DESIGN DETAILS ARE THE RESPONSIBILITY OF THE WALL PANEL MANUFACTURER. DETAILS SHOWN MAY CHANGE.

B -10' WALL WITH FOUNDATION TOP VIEW



A-A 10' WALL WITH FOUNDATION SIDE ELEVATION



POST BASE DETAIL

10' WALL WITH FOUNDATION ELEVATION

DETAIL - SEPARATOR WALL

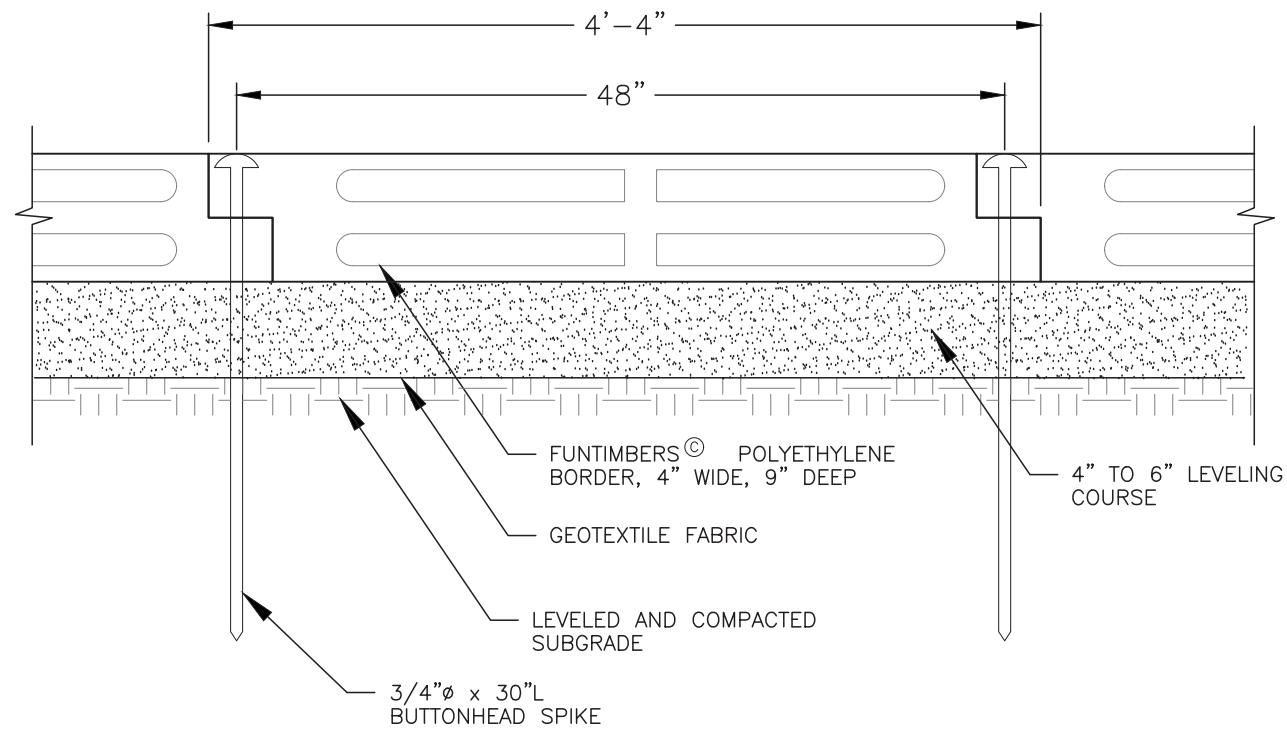
SCALE: 3/8"=1'-0"



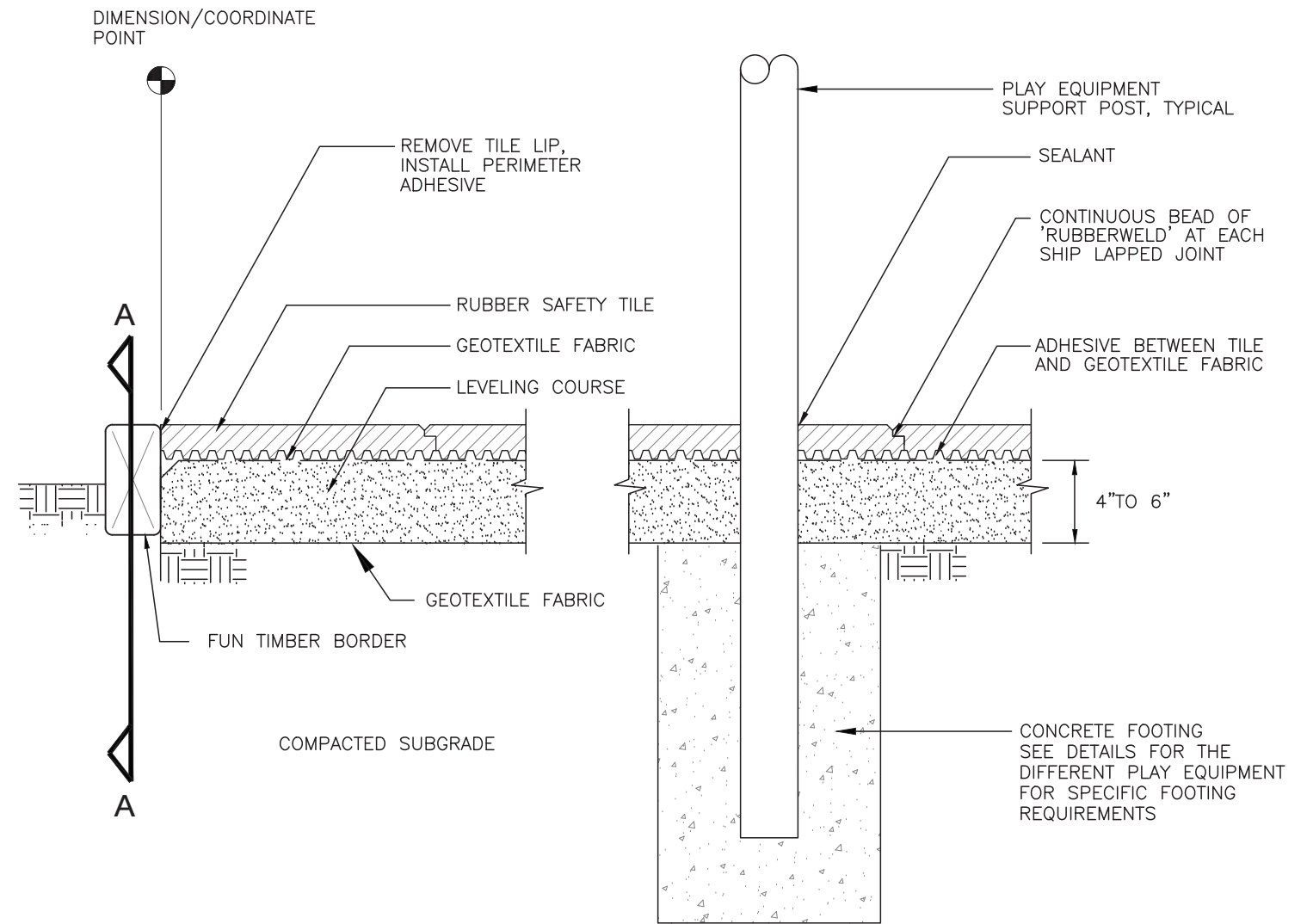
FOR BID
NOV. 11, 2019

REGAN ENGINEERING, P.C.			
PROJECT:		City of Unalaska 2020 PARK AND PLAYGROUND IMPROVEMENTS	
TITLE:		SITKA SPRUCE PARK ADD. ALT. 1 - SEPARATOR WALL	
DESIGNED BY:	TR	DATE:	11/11/2019
CHECKED BY:	TR	PROJECT NOS:	19102, 15202
			SHEET NO: 23 OF 30

NOTE: FUN TIMBER BORDER SHALL BE INSTALLED WITH THE TOP MATCHING THE SURFACE OF THE RUBBER SAFETY TILES AND/OR TO MATCH GRADES AS SHOWN ON DRAINAGE PLAN. INSTALL FUN TIMBERS WITHIN A TOLERANCE OF 0.25" HORIZONTALLY AND VERTICALLY FROM TRUE LINE AND GRADE. FUN TIMBERS[®] SHALL BE FURNISHED AND INSTALLED BY THE CONTRACTOR. MATERIALS SHALL BE AS MANUFACTURED BY CHILDFORMS[®] AND INSTALLED IN ACCORDANCE WITH THE RECOMMENDATIONS OF THE MANUFACTURER. PROVIDE ADJUSTIBLE END KITS WHERE APPROPRIATE.



BORDER SECTION A-A



PLAY SURFACE SECTION

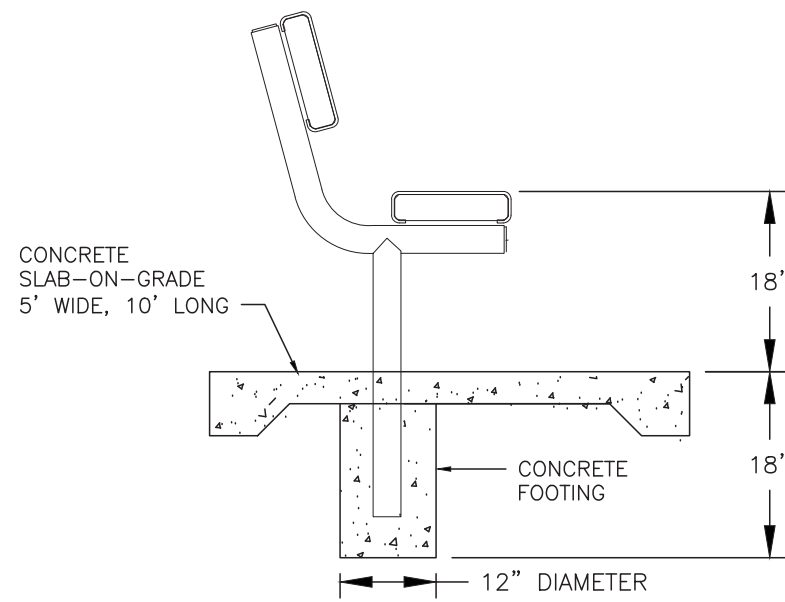
DETAILS – PLAYGROUND SURFACE AND BORDER

SCALE: 1/2" = 1'-0"

1
-

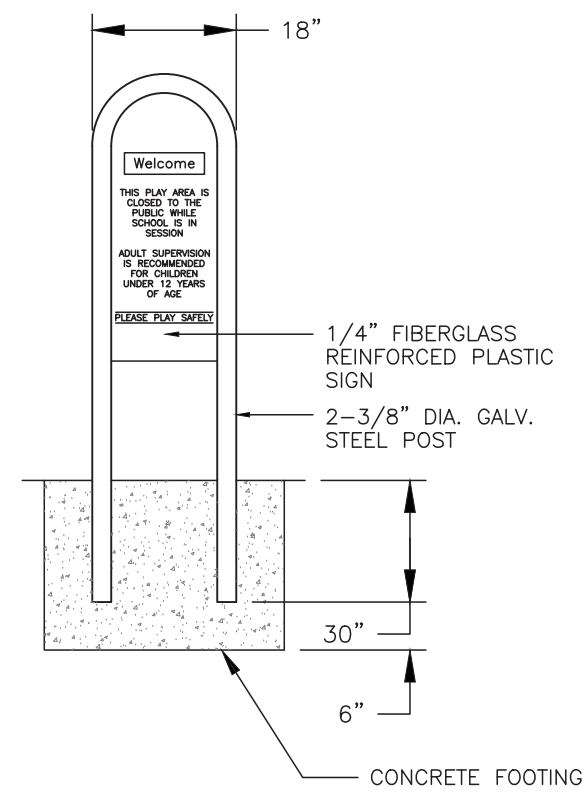
FOR BID
NOV. 11, 2019

REGAN ENGINEERING, P.C.			
PROJECT: City of Unalaska 2020 PARK AND PLAYGROUND IMPROVEMENTS			
TITLE: UCSD & SITKA SPRUCE PARKS PLAYGROUND DETAILS			
DESIGNED BY: TR	DATE: 11/11/2019	SHEET NO:	24 OF 30
CHECKED BY: TR	PROJECT NOS: 19102, 15202		



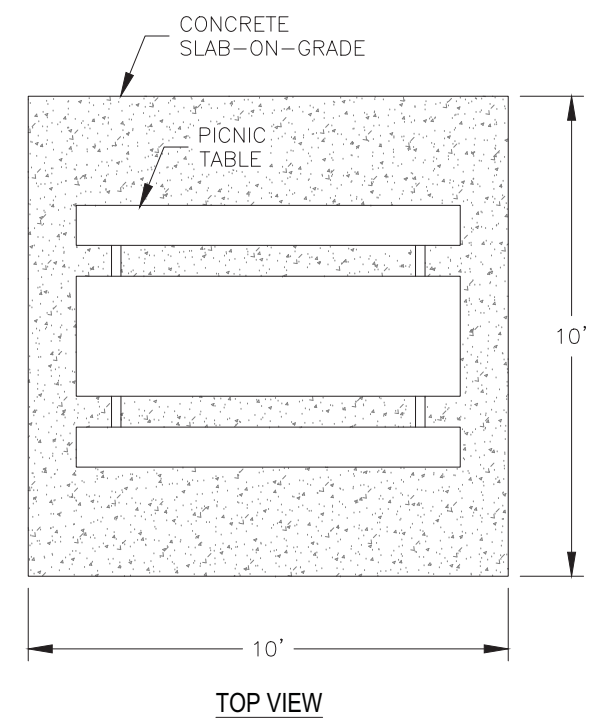
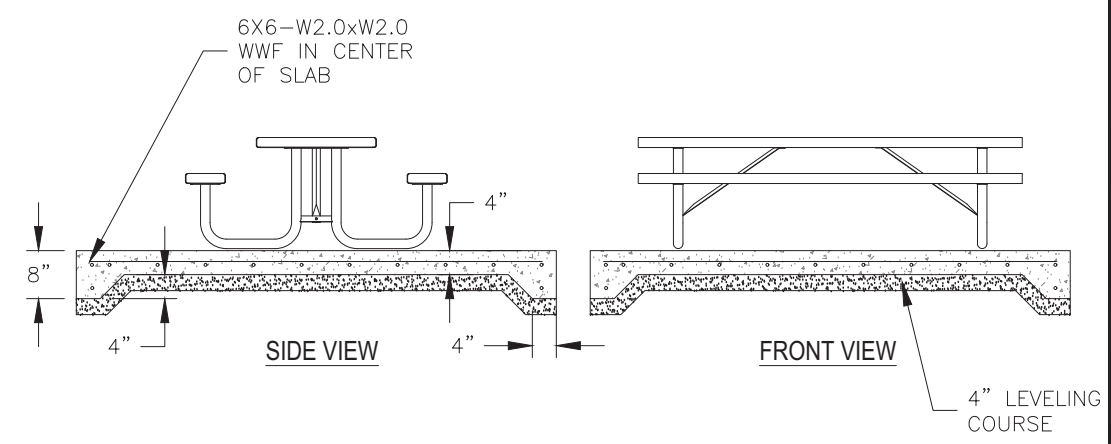
- NOTES:
1. FURNISH 8' BENCH WITH (2) POSTS AND FOOTINGS EACH.
 2. MATCH CONCRETE SLAB DETAILS WITH RQMTS. FOR PICNIC TABLE.

DETAIL - PLAYGROUND BENCH 1
SCALE: 1/2"=1'-0"



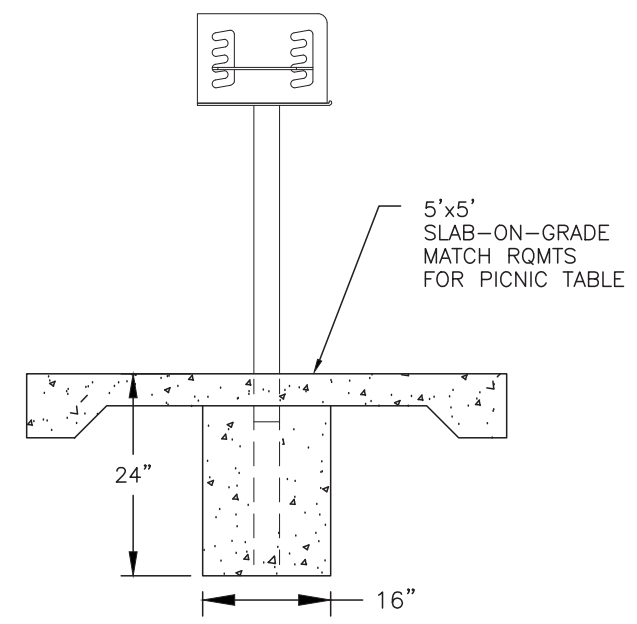
- NOTES:
1. INSTALL CONCRETE A MINIMUM OF 6" AROUND POSTS.
 2. SIGN WORDING TO BE VERIFIED PRIOR TO MANUFACTURING.

DETAIL - UCSD PARK SIGN 2
SCALE: 1/2"=1'-0"

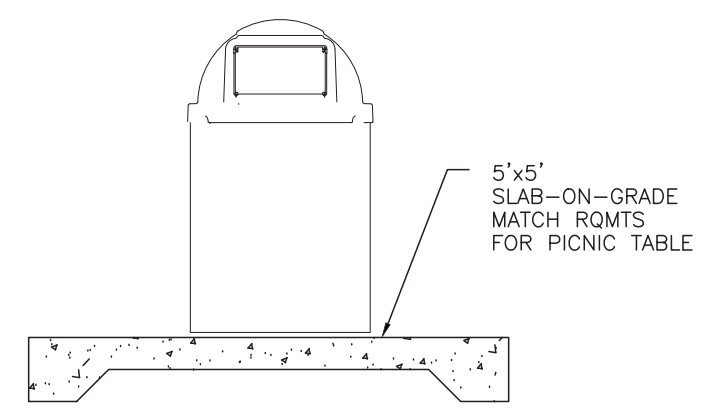


- NOTE:
1. THREE-TIER BELACHERS SHALL BE INSTALLED ON A 10' BY 20' CONCRETE SLAB-ON-GRADE CONSTRUCTED SIMILAR TO WHAT IS SHOWN FOR THE PICNIC BENCH.
 2. DRILL AND ANCHOR BLEACHERS AND PICNIC TABLES TO SLAB WITH FOUR 1/2" STAINLESS STEEL WEDGE ANCHORS.

DETAIL - PICNIC BENCH 3
SCALE: 1/4"=1'-0"



DETAIL - GRILL 4
SCALE: 1/2"=1'-0"



DETAIL - TRASH CAN 5
SCALE: 1/2"=1'-0"

FOR BID
NOV. 11, 2019

REGAN ENGINEERING, P.C.			
PROJECT: City of Unalaska			
2020 PARK AND PLAYGROUND IMPROVEMENTS			
TITLE: UCSD & SITKA SPRUCE PARKS			
MISCELLANEOUS DETAILS			
DESIGNED BY: TR	DATE: 11/11/2019	SHEET NO: 25 OF 30	
CHECKED BY: TR	PROJECT NOS: 19102, 15202		