

ADDENDUM NUMBER: 4

To Contract Documents for:

Unalaska Backflow Prevention Project DPW Project No. 15401/Contract No.: 15401-01

Prepared for:
City of Unalaska
Department of Public Works
1035 E. Broadway Avenue
Unalaska, Alaska 99685

By
Stantec Architecture Inc.
725 E. Fireweed Lane, Suite 200
Anchorage, AK 99503-2245
Phone 907.276.4245
Fax 907.258.4653

July 12, 2016

Please acknowledge receipt of this Addendum No. 4 in the appropriate blanks on the bid form.

The following corrections, changes, additions, deletions, revisions, and/or clarifications are hereby made a part of the contract documents for the **UNALASKA BACKFLOW PREVENTION PROJECT**. In case of conflicts between this Addendum and previously issued documents, this Addendum shall take precedence.

This addendum consists of the following:

Page(s) 1 of 1

Sheet 4.01 "PUBLIC WORKS UPCH – POST HYDRANT DEMOLITION", 1 page.

Sheet 4.02 "PUBLIC WORKS UPCH – POST HYDRANT NEW WORK", 1 page.

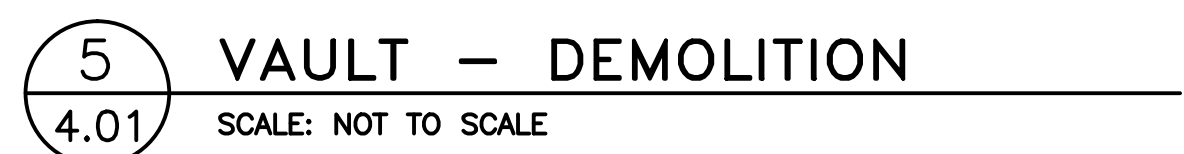
DRAWINGS

AD4-1 Sheet 4.01 "PUBLIC WORKS UPCH – POST HYDRANT DEMOLITION": **REPLACE** sheet in its entirety.

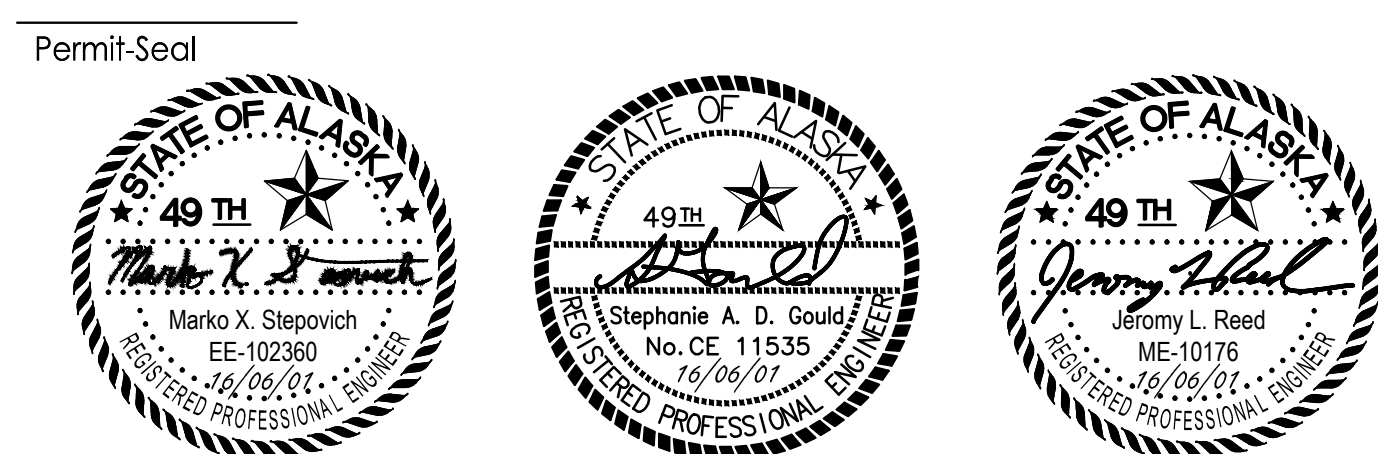
AD4-2 Sheet 4.02 "PUBLIC WORKS UPCH – POST HYDRANT NEW WORK": **REPLACE** sheet in its entirety.

END OF ADDENDUM NUMBER: 4

REMOVE EXISTING VALVES AND PIPE IN EXISTING VAULT
AND REPLACE WITH SPOOL.



| | | | |
|---|------------|------------|-------------------|
| 06/07/12 1:51 PM By: Down, Dorinda [Archived] | | | |
| | | | |
| | | | |
| | | | |
| | | | |
| | | | |
| | | | |
| | | | |
| | | | |
| Issued | By | Appd. | YY.MM.DD |
| ADDENDUM 4 | SDG | RMC | 2016/07/12 |
| | | | |
| | | | |
| | | | |
| | | | |
| | | | |
| | | | |
| | | | |
| Revision | By | Appd. | YY.MM.DD |



Client/Project

CITY OF UNALASKA
BACKFLOW PREVENTION PROJECT
DPW PROJECT / FILE NO. 15401
DPW CONTRACT NO. 15401-01

Original Sheet Size - 22 x 34

| | | | |
|---|--|---|---|
| <div>Sheet Title</div> <div>PUBLIC WORKS UPCH - POST HYDRANT DEMOLITION</div> | | | |
| <div>2046051500_401.DWG</div> <div>File Name</div> | <div>DGB JAR</div> <div>Dwn.</div> | <div>JLR GRH</div> <div>Chkd.</div> | <div>MXS SDG</div> <div>Dsgn.</div> |

Project No.

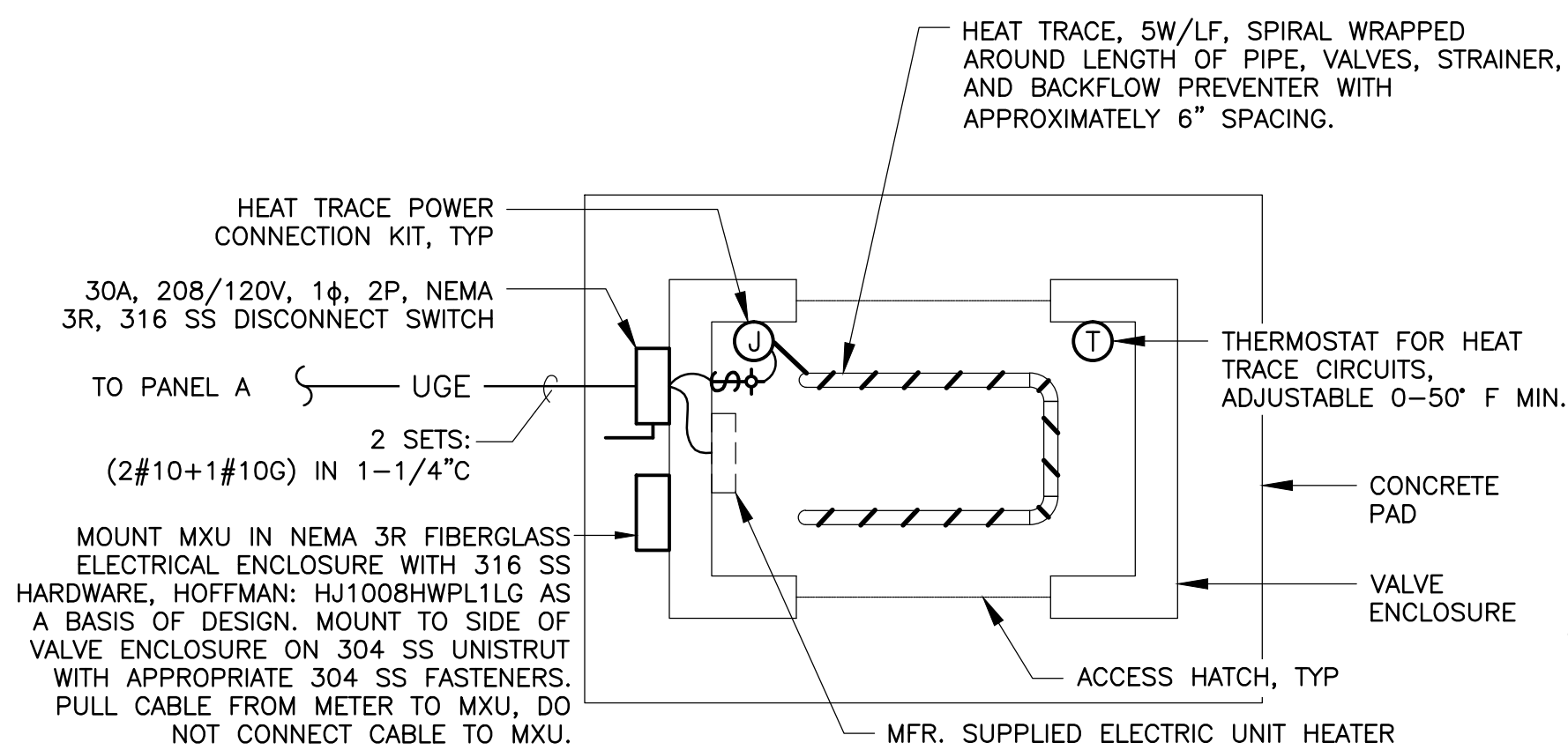
2046051500

BID DOCUMENTS

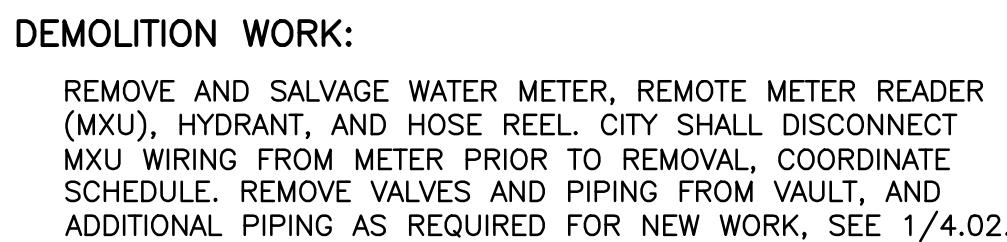
4.01

Drawing No.

| PANEL MDP | | | | | | | | | | | |
|---|---------------------|--------|-------|---------------|------|------|--------|------------------------------------|------------------|-----|-------|
| CKT | LOAD | BRANCH | | CONNECTED KVA | | | BRANCH | | LOAD | CKT | |
| | | BKR | VA | A | B | C | VA | BKR | | | |
| 1 | BYPASS PUMP (25 HP) | 60/3 | 9,418 | 9.4 | | | | | | 2 | |
| | | | 9,418 | | 9.4 | | | | | | |
| | | | 9,418 | | | 9.4 | | | | | |
| 3 | BASEBOARD HEAT | 20/1 | 4,432 | | 4.4 | | | | | 4 | |
| | BASEBOARD HEAT | 20/1 | 4,432 | | | 4.4 | | | | | |
| 5 | MAIN BREAKER | 225/3 | | 1.7 | | | 1,680 | 40/3 | EXISTING PANEL A | 6 | |
| | | | | | 3.9 | | | | | | 3,880 |
| | | | | | | 2.0 | | | | | 1,980 |
| CONNECTED LOAD | | | | 44.7 KVA | 11.1 | 17.7 | 15.8 | PANEL SPECIFICATIONS | | | |
| | | | | 54 AMPS | 40 | 64 | 57 | MAINS RATING AMPS – 400 | | | |
| NEC DEMAND | | | | 52.2 KVA | | | | MAIN CIRCUIT BREAKER AMPERES – MCB | | | |
| | | | | 63 AMPS | | | | CAPACITY THREE-POLE CIRCUITS – 10 | | | |
| PANEL NOTES | | | | | | | | SYSTEM VOLTAGE – 480Y/277 | | | |
| 1.) AS A RESULT OF NEW WORK 1.5 AMPS HAS BEEN ADDED TO THE SERVICE. | | | | | | | | PHASE, NO. OF WIRES – 3 PH, 4 W | | | |
| | | | | | | | | AIC RATING – 25,000 | | | |
| | | | | | | | | MOUNTING – SURFACE | | | |



4 ENCLOSURE ELECTRICAL PLAN
4.02 SCALE: 1/2" = 1'-0"



NEW WORK:

SEE 1/4.02 AND 3/4.02. INSTALL **NEW WATER SERVICE,** WATER METER, SHUT-OFF VALVES, STRAINER, BACKFLOW PREVENTER AND PIPE AS REQUIRED FOR A COMPLETE SYSTEM NEW METER FURNISHED BY CITY. CONTRACTOR SHALL INSTALL MXU, CITY SHALL MAKE FINAL WIRING CONNECTION TO METER, COORDINATE SCHEDULE. REINSTALL HOSE REEL AND HYDRANT. INSTALL HEATED ENCLOSURE, SEE 2/6.02. SEE UNALASKA DEPARTMENT OF PUBLIC UTILITIES (DPU) STANDARD DETAIL 60-6 FOR METER AND VALVE CONFIGURATION **INCLUDING ALL COMPONENTS AND INSTALLATION REQUIREMENTS**

METER MODEL: SENSUS OMNI C2
BACKFLOW PREVENTER TYPE: RPBA

