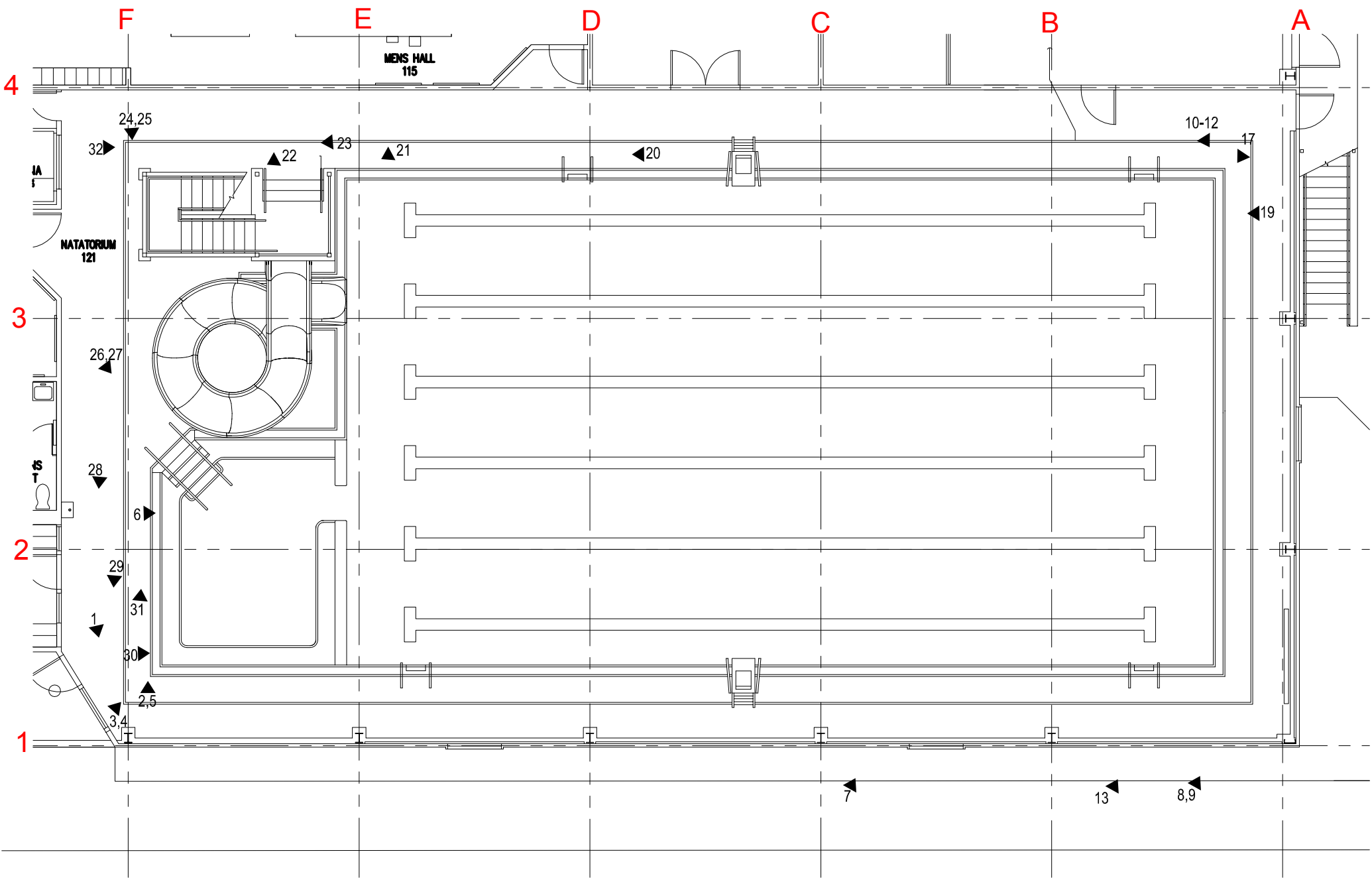


Unalaska Aquatics Center

NATORIUM 121

(ATTACHMENT 2E)



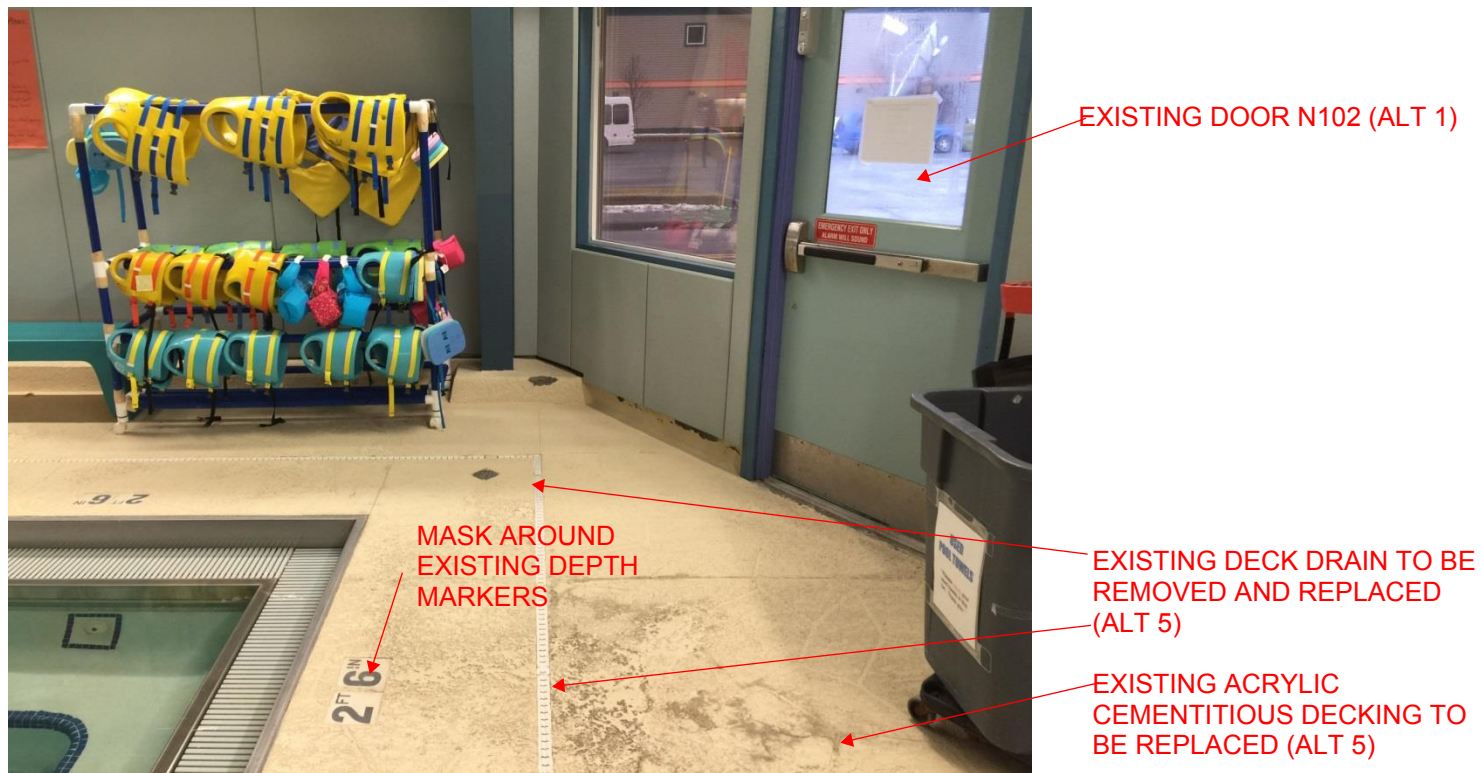
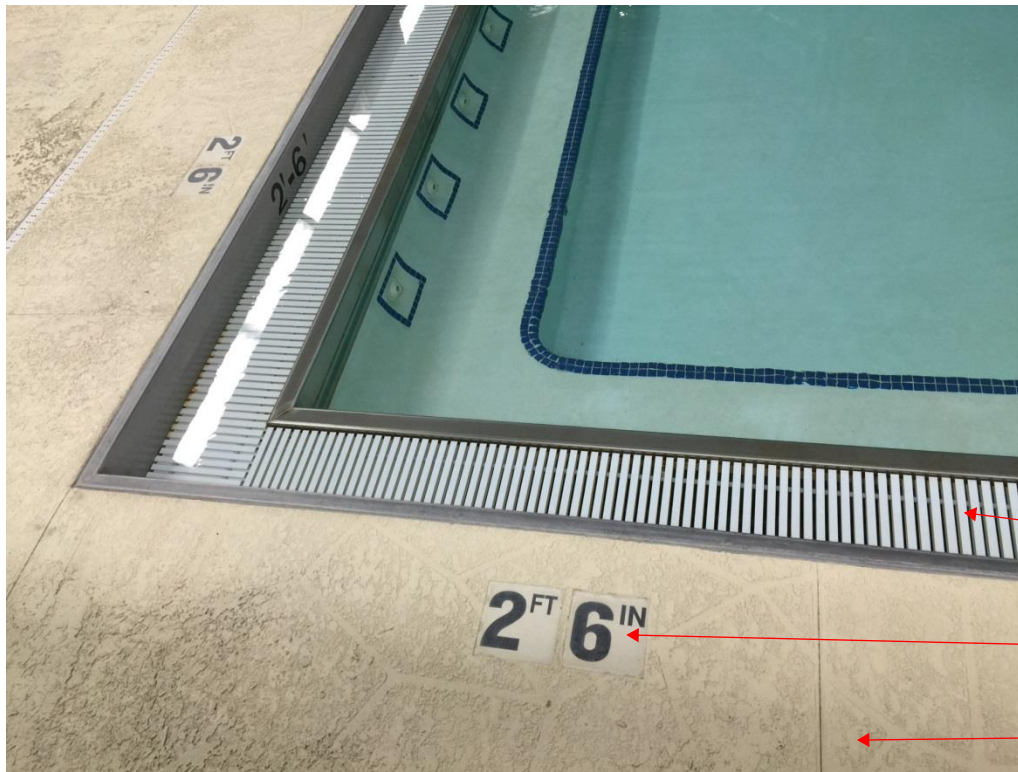


IMAGE 1. (SOUTHWEST CORNER OF NATATORIUM)



EXISTING PERIMETER POOL
GUTTER TO REMAIN

DEPTH MARKERS TO
REMAIN- NEW DECKING
MATERIAL TO BE FLUSH

EXISTING ACRYLIC
CEMENTITIOUS DECKING TO
BE REPLACED (ALT 5)

IMAGE 2.

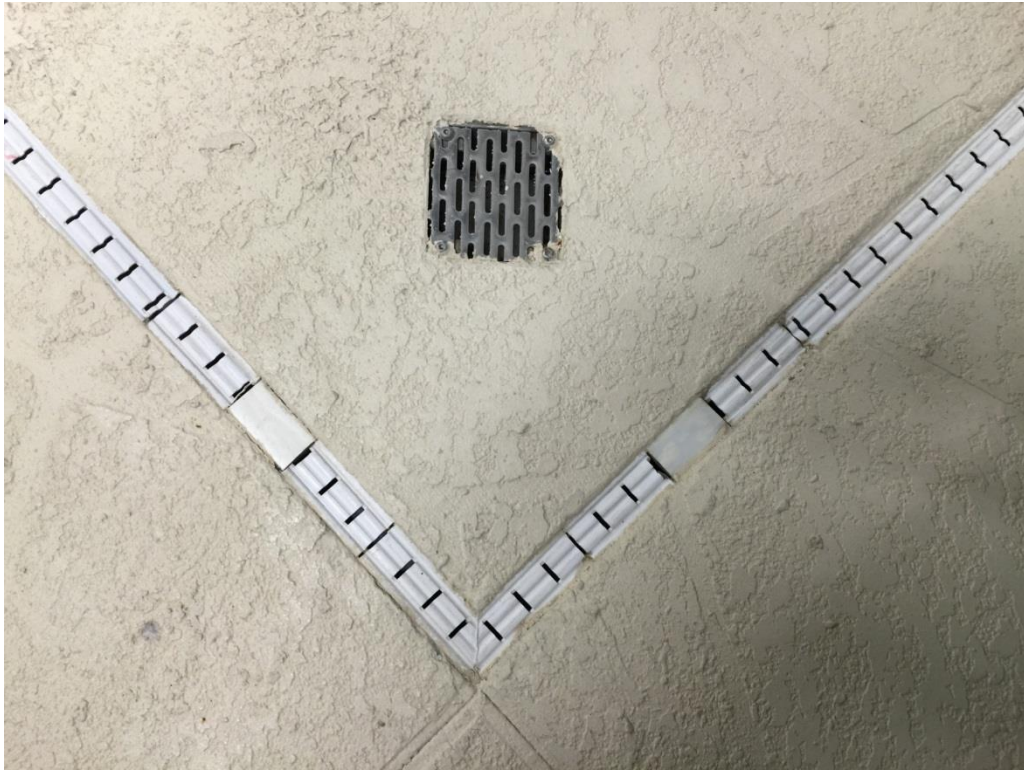


IMAGE 4.



EXISTING DECKING MATERIAL INTERFACE
WITH GUTTER, TYPICAL CONDITION
IMAGE 5.



REMOVE EXISTING WALL
MOUNTED BOARD. INSTALL NEW
TIMER BOARD IN THIS LOCATION

REMOVE ALL LADDERS,
LIFEGUARD CHAIRS, DRAINS,
STARTING BLOCKS, AND
OTHER PENETRATIONS AS
REQUIRED TO INSTALL NEW
DECK, (ALT 5) - REINSTALL
EXISTING ITEMS AFTER
DECKING INSTALL IS
COMPLETE

VIEW OF NATATORIUM LOOKING EAST
IMAGE 6.



IMAGE 7.



IMAGE 8.

REMOVE EXISTING WALL MOUNTED
DISPLAY

INSTALL NEW ELECTRONIC TIMER IN
THIS LOCATION

REMOVE EXISTING START BLOCKS

1.) GROUT EXISTING HOLES SOLID -
RESURFACE WITH ACRYLIC CEMENTITIOUS
DECKING, MATCHING SURROUNDING
SURFACE (BASE BID)

2.) CORE DRILL AND INSTALL NEW
STARTING BLOCK, RESURFACE WITH
ACRYLIC CEMENT DECKING MATERIAL
(BASE BID)

INSTALL NEW START BLOCKS.



NATATORIUM 121 - EAST WALL

IMAGE 9.



REMOVE EXISTING WALL MOUNTED DISPLAY

INSTALL NEW ELECTRONIC TIMER IN THIS LOCATION

REMOVE EXISTING START BLOCKS
1.) GROUT EXISTING HOLES SOLID - RESURFACE WITH ACRYLIC CEMENTITIOUS DECKING, MATCHING SURROUNDING SURFACE (BASE BID)
2.) CORE DRILL AND INSTALL NEW STARTING BLOCK, RESURFACE WITH ACRYLIC CEMENT DECKING MATERIAL (BASE BID)

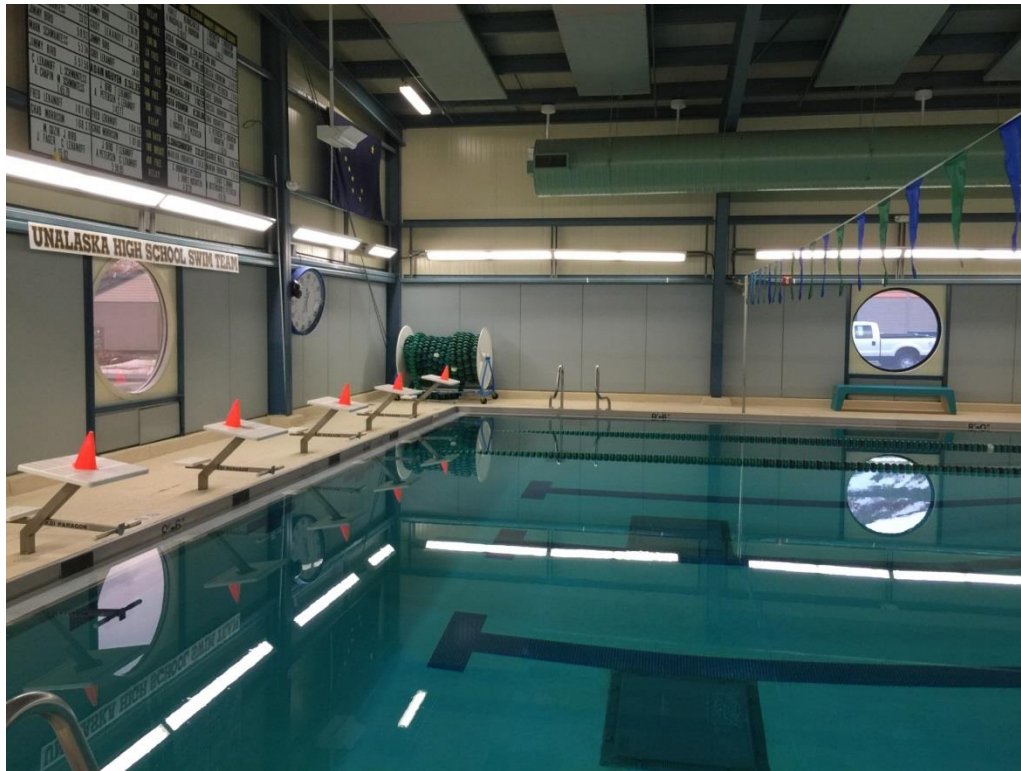
INSTALL NEW START BLOCKS.

NATATORIUM 121 - EAST WALL

IMAGE 10.



NATATORIUM 121 - EAST WALL
IMAGE 11



NATATORIUM 121 - SOUTH/EAST CORNER
IMAGE 12.



IMAGE 13.



IMAGE 14.



IMAGE 15.



IMAGE 16.



IMAGE 17.

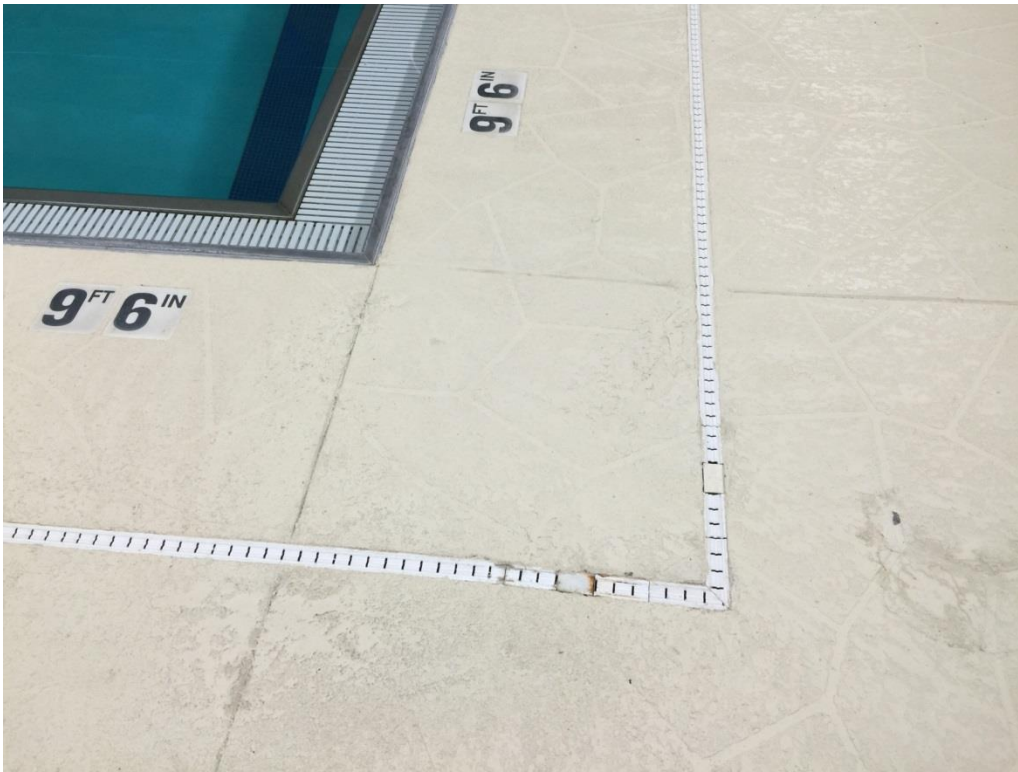
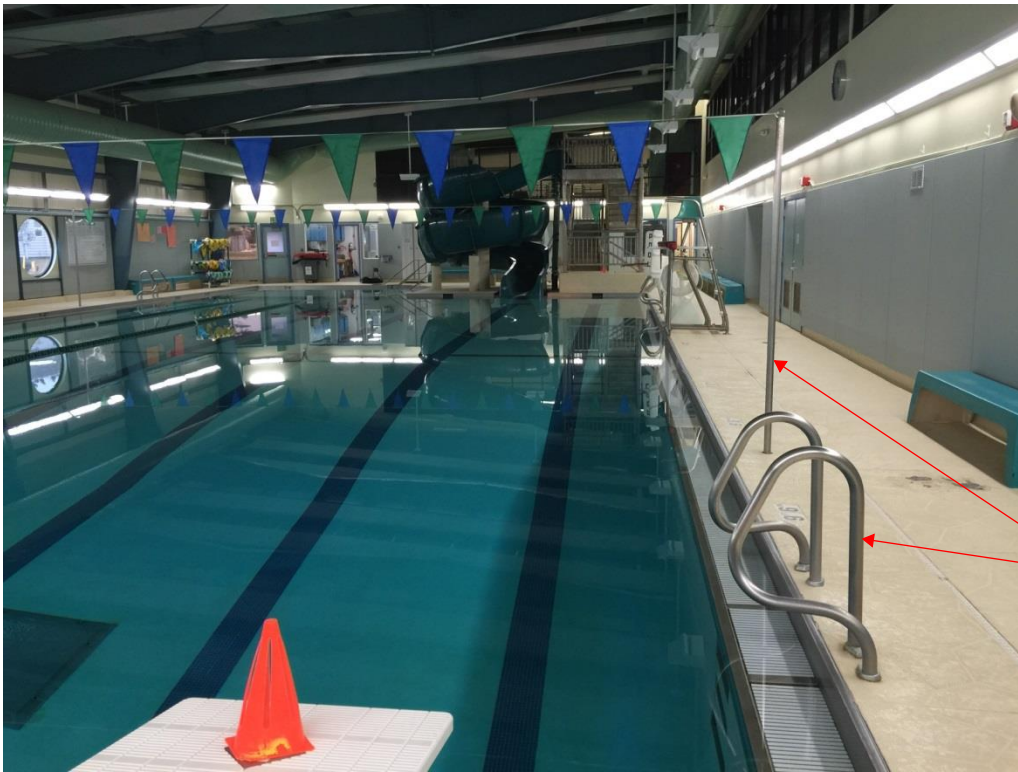


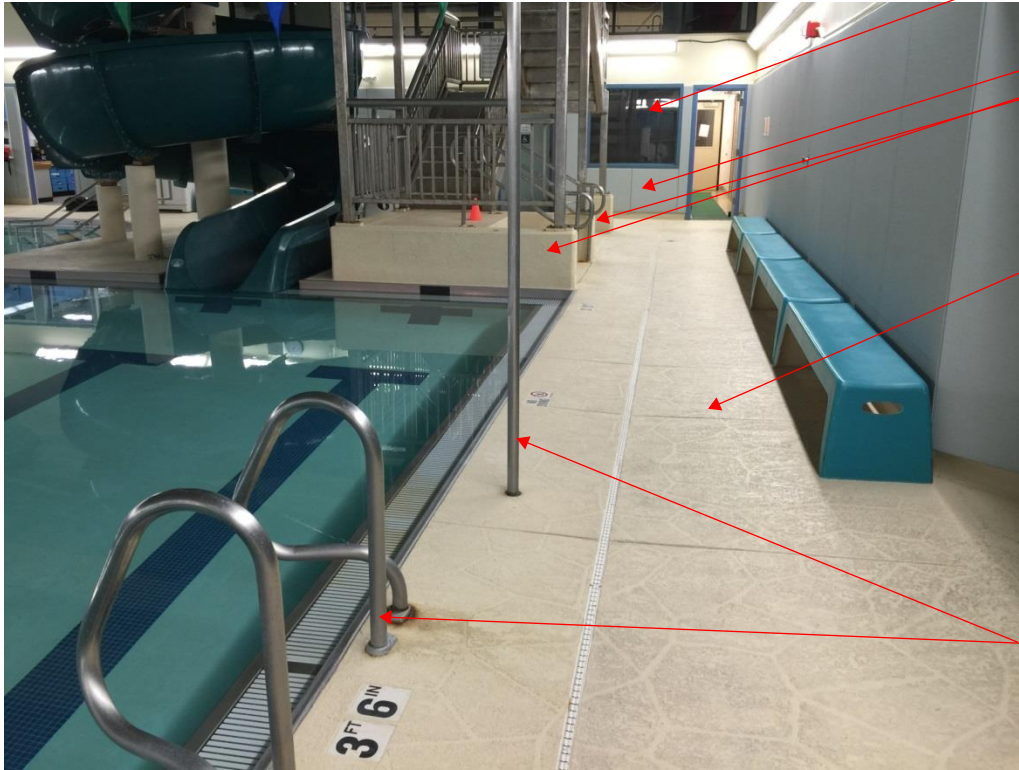
IMAGE 18.



REMOVE EXISTING POLES,
RAILS, DRAIN COVERS AND ALL
OTHER EXISTING
PENETRATIONS REQUIRED TO
INSTALL NEW DECKING -
REINSTALL ITEMS AFTER DECK
INSTALLATION

NATATORIUM 121 - VIEW FROM
NORTHEAST CORNER OF POOL LOOKING
SOUTH WEST

IMAGE 19.



EXISTING WINDOW TO BE
REMOVED
EXISTING ACOUSTICAL PANEL TO
BE REMOVED

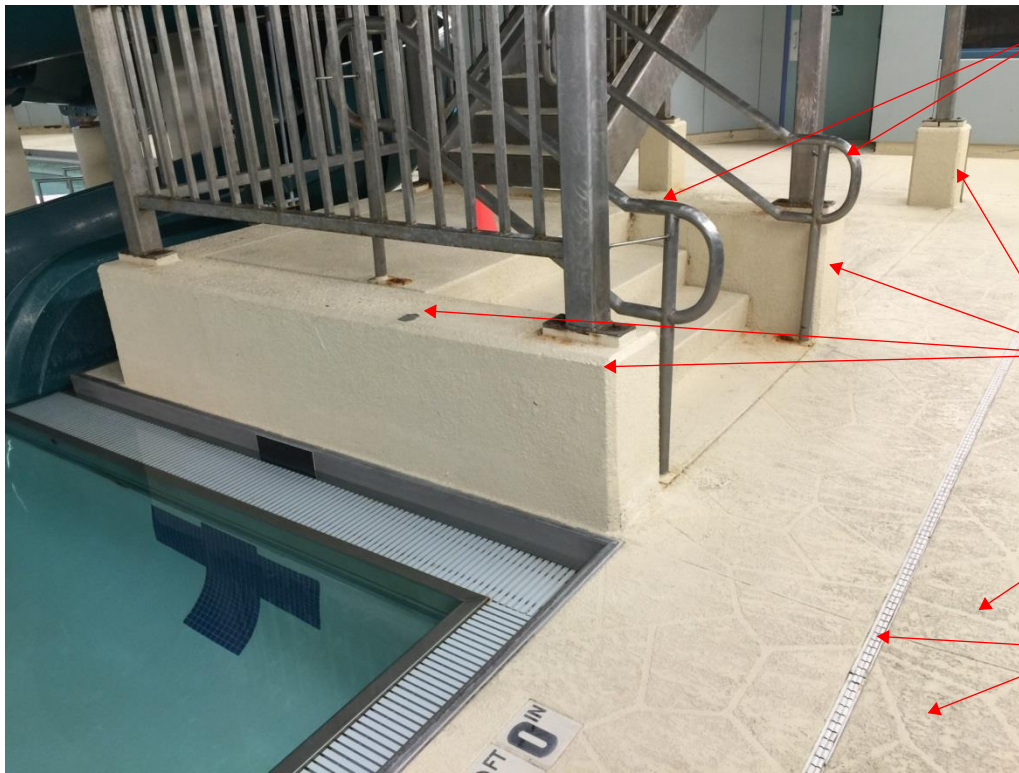
EXTEND NEW DECKING UP
ONTO AND OVER BASE OF
STAIR AND COLUMN BASES

EXISTING ACRYLIC CEMENT
DECKING TO REMAIN (BASE
BID)

REPLACE DECKING AND
DECK DRAIN (ALT 5)

REMOVE EXISTING POLES,
RAILS, DRAIN COVERS AND ALL
OTHER EXISTING
PENETRATIONS REQUIRED TO
INSTALL NEW DECKING -
REINSTALL ITEMS AFTER DECK
INSTALLATION

NATATORIUM 121 - VIEW FROM NORTH
SIDE OF POOL APPROXIMATELY AT MID
POINT LOOKING WEST
IMAGE 20.



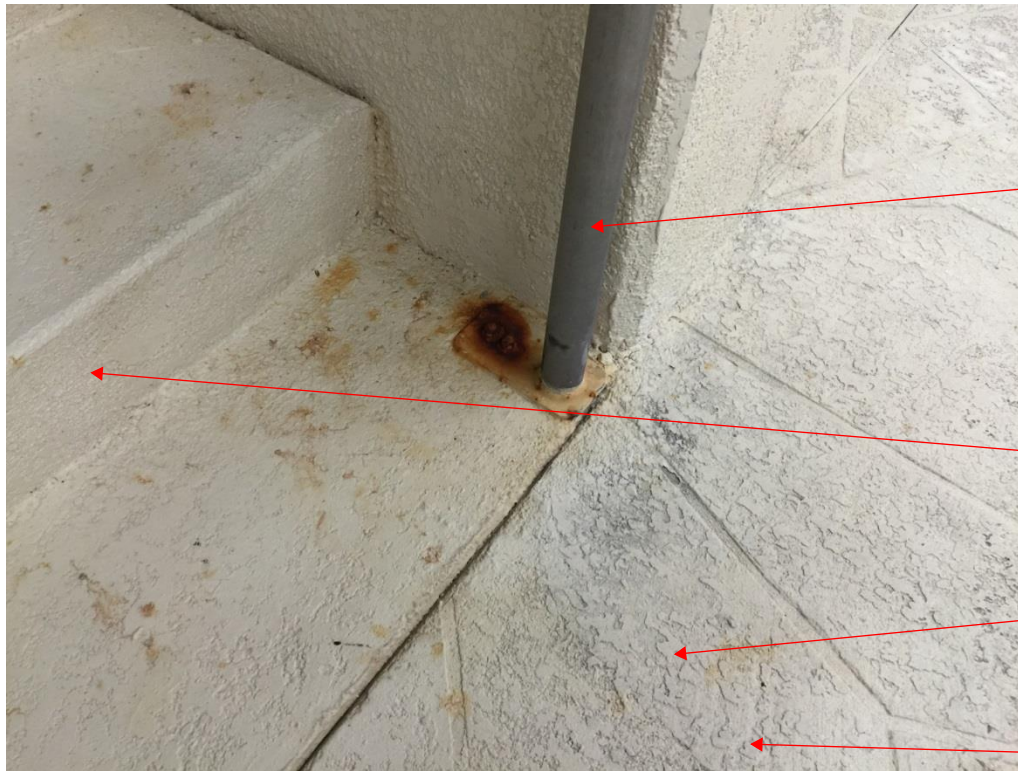
REMOVE EXISTING POLES,
RAILS, DRAIN COVERS AND ALL
OTHER EXISTING
PENETRATIONS REQUIRED TO
INSTALL NEW DECKING -
REINSTALL ITEMS AFTER DECK
INSTALLATION

EXTEND NEW DECKING UP
ONTO AND OVER BASE OF
STAIR AND COLUMN BASES

EXISTING ACRYLIC CEMENT
DECKING TO REMAIN (BASE
BID)

REPLACE DECKING AND
DECK DRAIN (ALT 5)

IMAGE 21.



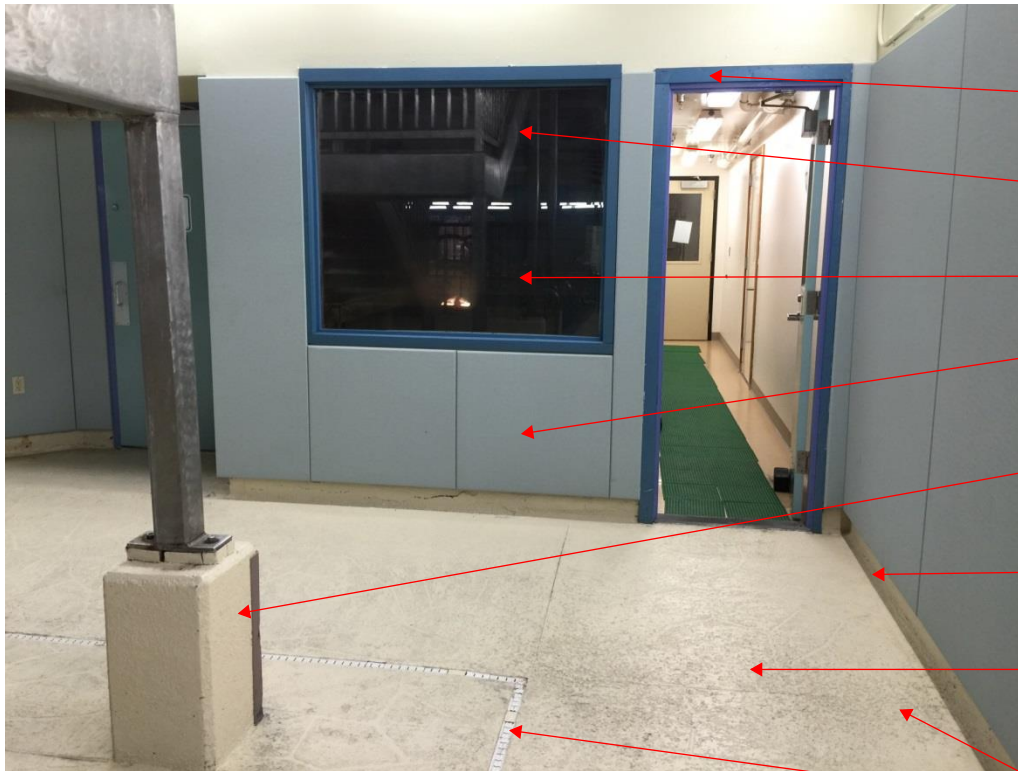
REMOVE EXISTING POLES,
RAILS, DRAIN COVERS AND ALL
OTHER EXISTING
PENETRATIONS REQUIRED TO
INSTALL NEW DECKING -
REINSTALL ITEMS AFTER DECK
INSTALLATION

EXTEND NEW DECKING UP
ONTO AND OVER BASE OF
STAIR AND COLUMN BASES

EXISTING ACRYLIC CEMENT
DECKING TO REMAIN (BASE
BID)

REPLACE DECKING AND
DECK DRAIN (ALT 5)

IMAGE 22.



REMOVE EXISTING DOOR AND
FRAME

EXISTING WINDOW TO BE
REMOVED

EXISTING SAUNA TO BE REMOVED

EXISTING ACOUSTICAL PANEL TO
BE REMOVED

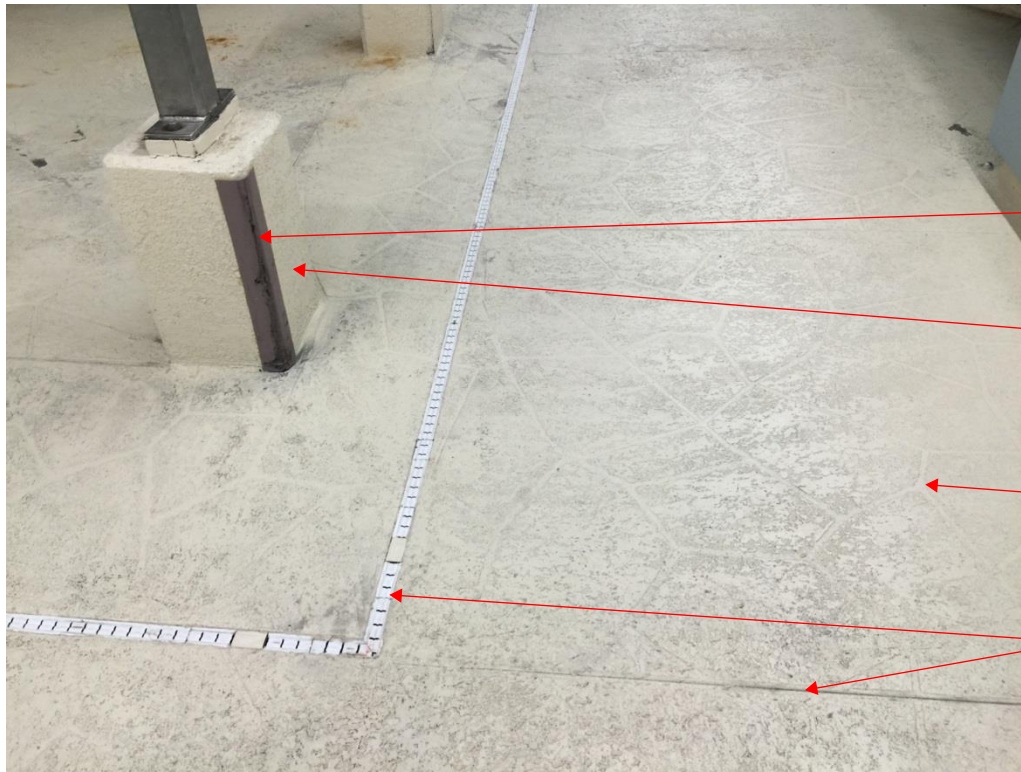
EXTEND NEW DECKING UP
ONTO AND OVER COLUMN
BASES

DECKING TO COVE UP WALL,
TYP

EXISTING ACRYLIC CEMENT
DECKING TO REMAIN (BASE
BID)

REPLACE DECKING AND
DECK DRAIN (ALT 5)

NATATORIUM 121
VIEW LOOKING WEST AT NORTHWEST
CORNER
IMAGE 23.



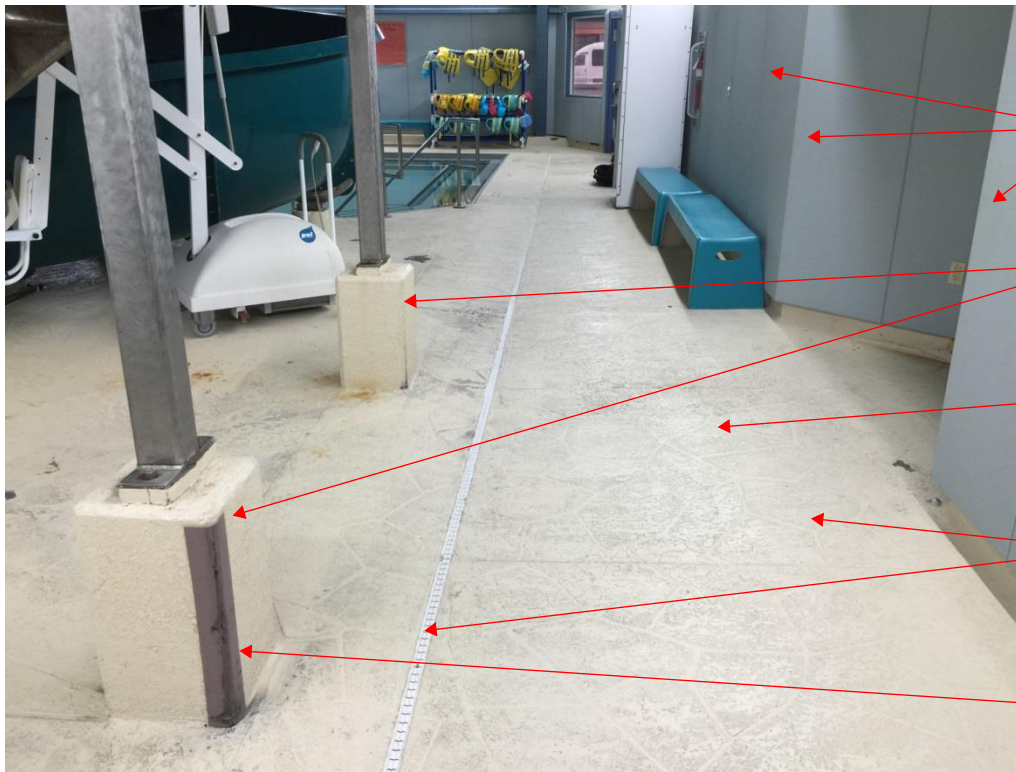
EXISTING STAINLESS TO REMAIN. ABUTT
DECKING TO STAINLESS CORNERGUARD

EXTEND NEW DECKING UP
ONTO AND OVER COLUMN
BASES

EXISTING ACRYLIC CEMENT
DECKING TO REMAIN (BASE
BID)

REPLACE DECKING AND
DECK DRAIN (ALT 5)

NATATORIUM 121 NORTHWEST CORNER
VIEW LOOKING SOUTH LOOKING AT NORTHWEST
POST BASE OF SLIDE
IMAGE 24.



EXISTING ACOUSTICAL WALL PANELS
TO REMAIN INTACT

EXTEND NEW DECKING UP
ONTO AND OVER COLUMN
BASES

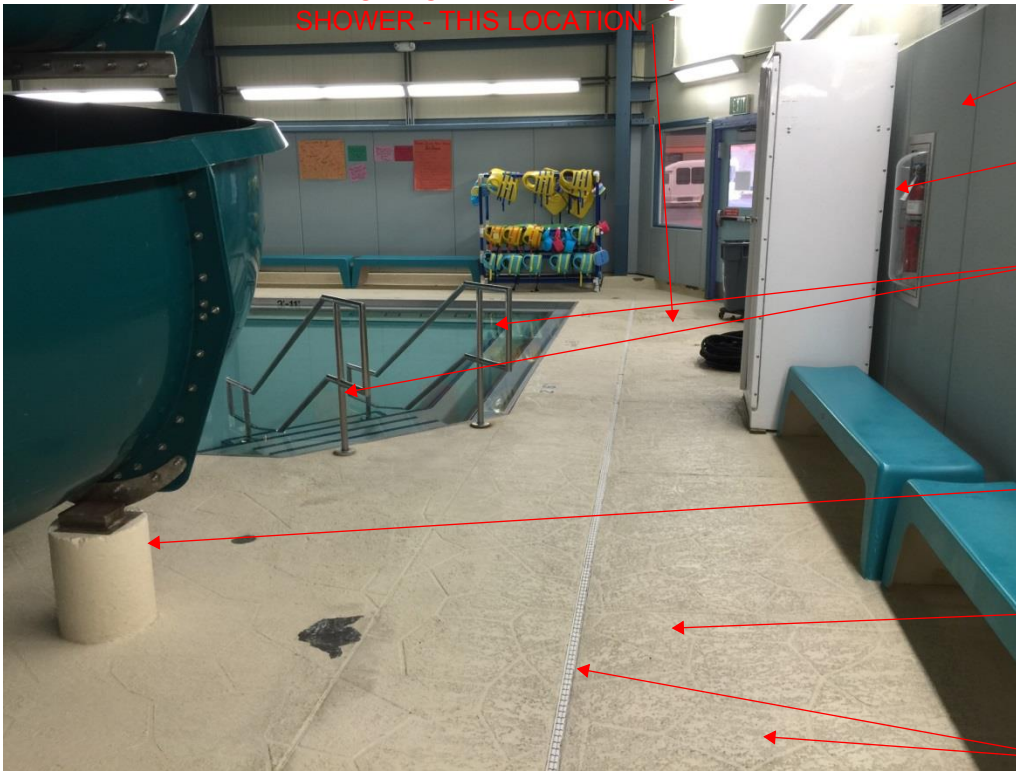
EXISTING ACRYLIC CEMENT
DECKING TO REMAIN (BASE
BID)

REPLACE DECKING AND
DECK DRAIN (ALT 5)

EXISTING STAINLESS TO REMAIN. ABUTT
DECKING TO STAINLESS CORNERGUARD

NATATORIUM 121
WEST END OF POOL (APPROXIMAGTELY 5' FROM
NORTH WALL ALONG WEST WALL
LOOKING SOUTH
IMAGE 25.

ARCRYLIC CEMENT FLOORING TO
BE BUILT UP AND EXTEND TO NEW
SHOWER - THIS LOCATION



EXISTING ACOUSTICAL WALL PANELS
TO REMAIN INTACT

EXISTING FIRE EXTINGUISHER TO
REMAIN

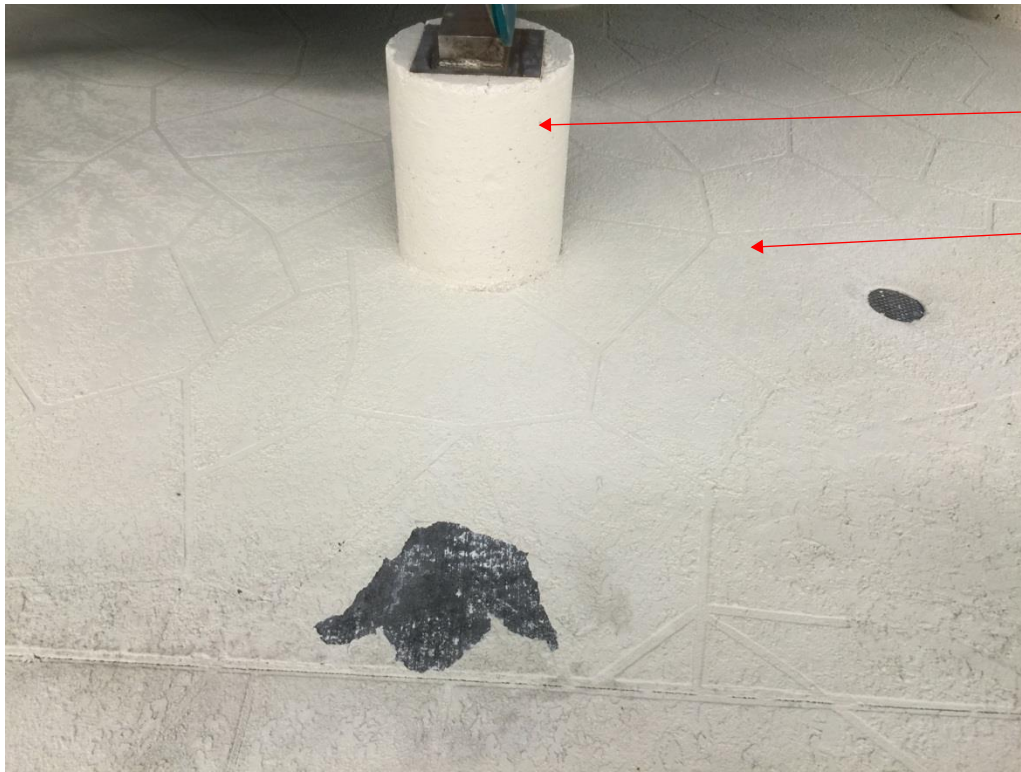
REMOVE EXISTING POLES,
RAILS, DRAIN COVERS AND ALL
OTHER EXISTING
PENETRATIONS REQUIRED TO
INSTALL NEW DECKING -
REINSTALL ITEMS AFTER DECK
INSTALLATION

EXTEND NEW DECKING UP
AND OVER COLUMN BASES

EXISTING ACRYLIC CEMENT
DECKING TO REMAIN (BASE
BID)

REPLACE DECKING AND
DECK DRAIN (ALT 5)

NATATORIUM 121
WEST END OF POOL (APPROXIMAGTELY 20' FROM
NORTH WALL ALONG WEST WALL -VIEW LOOKING
SOUTH
IMAGE 26.

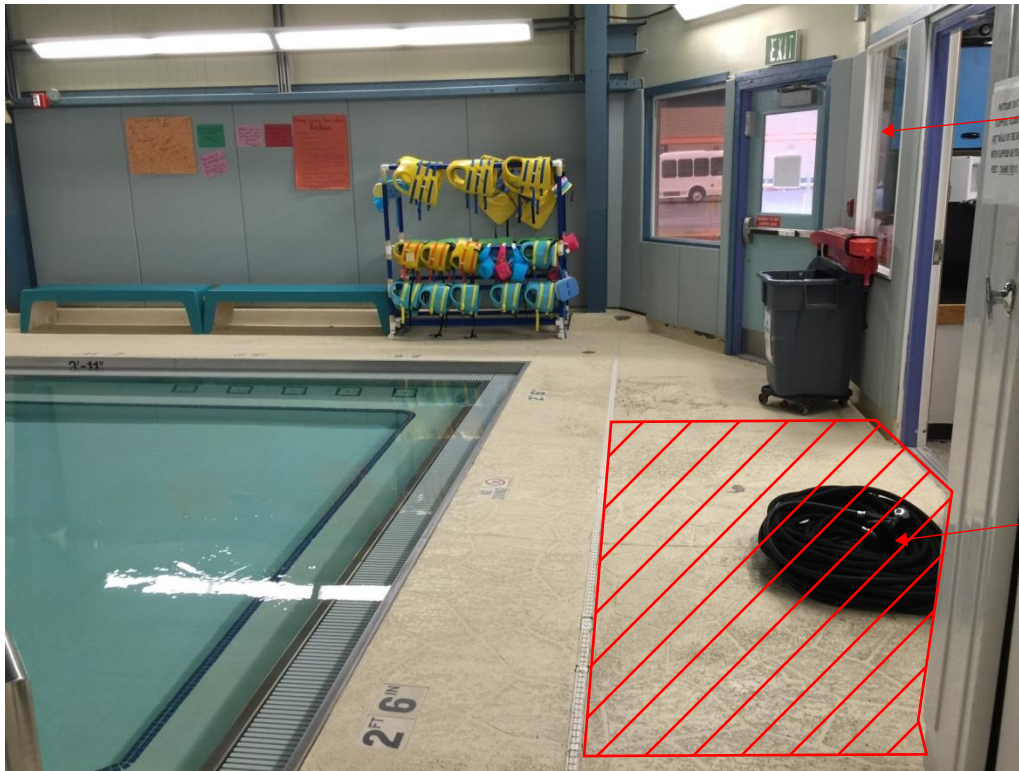


EXTEND NEW DECKING UP
AND OVER COLUMN BASES

EXISTING ACRYLIC CEMENT
DECKING TO REMAIN (BASE
BID)

REPLACE DECKING AND
DECK DRAIN (ALT 5)

IMAGE 27.



SEE PLANS FOR DEMOLITION
AND NEW CONSTRUCTION
REQUIRED IN THIS AREA

ARCRYLIC CEMENT FLOORING TO
BE BUILT UP AND EXTEND TO NEW
SHOWER - THIS LOCATION

NATATORIUM 121
WEST END OF POOL (APPROXIMATELY 30' FROM
SOUTH WALL ALONG WEST WALL - VIEW LOOKING
SOUTH

IMAGE 28.



NATATORIUM 121 (SOUTHWEST CORNER)

IMAGE 29



NATATORIUM 121 - VIEW LOOKING
FROM SOUTHWEST TOWARD NORTH
EAST
IMAGE 30



NATATORIUM 121 - VIEW LOOKING
FROM SOUTHWEST TOWARD NORTH
IMAGE 31



NATATORIUM 121 - VIEW LOOKING
FROM NORTHWEST TOWARD EAST
IMAGE 32