

ADDENDUM No. 4 TO THE CONTRACT DOCUMENTS

Project: City of Unalaska Lake & River Restoration Projects

Addendum Issue Date: December 29, 2015

Issued for Bid Date: November 13, 2015

Bid Due Date: January 6, 2016, 2:00pm (AK)

Previous Addenda Issued: Addendum #1-3

Issued By: Alexandra West
PND Engineers, Inc.
1506 West 36th Avenue
Anchorage, Alaska 99503

Notice to Bidders:

Bidders must acknowledge receipt of this addendum prior to the date set for bid opening by one of the following methods:

- (1) By acknowledging receipt of this addendum on the bid submitted.
- (2) By fax which includes a reference to the project and addendum number.

The bid documents require acknowledgment individually of all addenda to the drawings and/or specifications. This is a mandatory requirement and any bid received without acknowledgment of receipt of addenda may be classified as not being a responsive bid. If, by virtue of this addendum it is desired to modify a bid already submitted, such modification may be made by fax provided such a fax makes reference to this addendum and is received prior to the opening date specified above.

The contract Documents for the above project are amended as follows (all other terms and conditions remain unchanged):

ITEM 1

Contract: *City of Unalaska Lake & River Restoration Projects*
Section: *Part 4 – Minimum Rates of Pay*

See attached **federal** wage rates for Alaska building and heavy construction projects, modified 11/27/15.

ITEM 2

Contract: *City of Unalaska Lake & River Restoration Projects*
Section: *Part 9 – Project Permits*

Add attached permit (Nationwide Permit 43 # POA-2015-608, Iliuliuk River) to Part 9.

ITEM 3

Contract: *City of Unalaska Lake & River Restoration Projects*
Section: *Part 9 – Project Permits*

See attached lamp test form to be included with ADEC “Approval to Construct” for storm drain.

END OF ADDENDUM

General Decision Number: AK150001 11/27/2015 AK1

Superseded General Decision Number: AK20140001

State: Alaska

Construction Types: Building and Heavy

Counties: Alaska Statewide.

BUILDING AND HEAVY CONSTRUCTION PROJECTS (does not include residential construction consisting of single family homes and apartments up to and including 4 stories)

Note: Executive Order (EO) 13658 establishes an hourly minimum wage of \$10.10 for 2015 that applies to all contracts subject to the Davis-Bacon Act for which the solicitation is issued on or after January 1, 2015. If this contract is covered by the EO, the contractor must pay all workers in any classification listed on this wage determination at least \$10.10 (or the applicable wage rate listed on this wage determination, if it is higher) for all hours spent performing on the contract. The EO minimum wage rate will be adjusted annually. Additional information on contractor requirements and worker protections under the EO is available at www.dol.gov/whd/govcontracts.

Modification Number	Publication Date
0	01/02/2015
1	01/09/2015
2	01/23/2015
3	02/06/2015
4	02/20/2015
5	03/27/2015
6	04/03/2015
7	04/10/2015
8	05/29/2015
9	06/12/2015
10	07/10/2015
11	07/24/2015
12	08/07/2015
13	10/09/2015
14	11/13/2015
15	11/27/2015

ASBE0097-001 09/02/2013

	Rates	Fringes
Asbestos Workers/Insulator (includes application of all insulating materials protective coverings, coatings and finishings to all types of mechanical systems).....	\$ 34.88	18.67

ASBE0097-002 09/02/2013

	Rates	Fringes
HAZARDOUS MATERIAL HANDLER (includes preparati on,		

wetting, stripping, removal
scrapping, vacuuming, bagging,
and disposing of all
insulation materials, whether
they contain asbestos or not,
from mechanical systems).....\$ 34.88 18.67

BOIL0502-002 01/01/2013

	Rates	Fringes
BOILERMAKER.....	\$ 42.97	26.60

BRAK0001-002 07/01/2014

	Rates	Fringes
Bricklayer, Blocklayer, Stonemason, Marble Mason, Tile Setter, Terrazzo Worker.....	\$ 39.03	18.95
Tile & Terrazzo Finisher.....	\$ 33.27	18.95

CARP1501-001 09/01/2014

	Rates	Fringes
MI LLWRIGHT.....	\$ 35.74	21.29

CARP2520-003 09/01/2014

	Rates	Fringes
Diver		
Stand-by.....	\$ 41.65	23.34
Tender.....	\$ 40.65	23.34
Working.....	\$ 81.45	23.34
Piledriver		
Carpenter.....	\$ 37.34	23.34
Piledriver; Skiff Operator and Rigger.....	\$ 37.34	23.34
Sheet Stabber.....	\$ 36.59	22.59
Welder.....	\$ 42.90	23.34

DEPTH PAY PREMIUM FOR DIVERS BELOW WATER SURFACE:
50-100 feet \$1.00 per foot
101 feet and deeper \$2.00 per foot

ENCLOSURE PAY PREMIUM WITH NO VERTICAL ASCENT:
5-50 FEET \$1.00 PER FOOT/DAY
51-100 FEET \$2.00 PER FOOT/DAY
101 FEET AND ABOVE \$3.00 PER FOOT/DAY

SATURATION DIVING:

The standby rate applies until saturation starts. The saturation diving rate applies when divers are under pressure continuously until work task and decompression are complete. the diver rate shall be paid for all saturation hours.

WORK IN COMBINATION OF CLASSIFICATIONS:

Employees working in any combination of classifications within the diving crew (except dive supervisor) in a shift are paid in the classification with the highest rate for

that shift.

CARP4059-001 09/01/2014

	Rates	Fringes
CARPENTER		
Carpenter.....	\$ 37.34	23.34
Lather/Drywall Applicator...	\$ 36.59	22.59

ELEC1547-004 04/01/2015

	Rates	Fringes
CABLE SPLICER.....	\$ 39.82	3%+24.36
ELECTRICIAN.....	\$ 39.49	3%+24.36

ELEC1547-005 04/01/2015

Line Construction

	Rates	Fringes
CABLE SPLICER.....	\$ 52.27	3%+28.48
Linemen (Including Equipment Operators, Technician).....	\$ 50.52	3%+28.48
Powderman.....	\$ 48.52	3%+28.48
TREE TRIMMER.....	\$ 35.34	3%+21.66

ELEV0019-002 01/01/2015

	Rates	Fringes
ELEVATOR MECHANIC.....	\$ 51.34	28.38+a+b

FOOTNOTE: a. Employer contributes 8% of the basic hourly rate for over 5 year's service and 6% of the basic hourly rate for 6 months to 5 years' of service as vacation paid credit. b. Eight paid holidays: New Year's Day; Memorial Day; Independence Day; Labor Day; Veteran's Day; Thanksgiving Day; Friday after Thanksgiving and Christmas Day

ENGI 0302-002 01/01/2015

	Rates	Fringes
POWER EQUIPMENT OPERATOR		
GROUP 1.....	\$ 40.03	21.10
GROUP 1A.....	\$ 41.79	21.10
GROUP 2.....	\$ 39.26	21.10
GROUP 3.....	\$ 38.54	21.10
GROUP 4.....	\$ 32.33	21.10
TUNNEL WORK		
GROUP 1.....	\$ 44.03	21.10
GROUP 1A.....	\$ 45.97	21.10
GROUP 2.....	\$ 43.19	21.10
GROUP 3.....	\$ 42.39	21.10
GROUP 4.....	\$ 35.56	21.10

POWER EQUIPMENT OPERATOR CLASSIFICATIONS

GROUP 1: Asphalt Roller: Breakdown, Intermediate, and Finish; Back Filler; Barrier Machine (Zipper); Bel tcrete with power pack and similar conveyors; Bending Machine; Boat Coxwains; Bulldozers; Cableways, Highlines and Cablecars; Cleaning Machine; Coating Machine; Concrete Hydro Blaster; Cranes-45 tons and under or 150 foot boom and under (including jib and attachments): (a) Hydralifts or Transporters, all track or truck type, (b) Derricks; Crushers; Deck Winches-Double Drum; Ditching or Trenching Machine (16 inch or over); Drilling Machines, core, cable, rotary and exploration; Finishing Machine Operator, Concrete Paving, Laser Screed, Sidewalk, Curb and Gutter Machine; Helicopters; Hover Craft, Flex Craft, Loadmaster, Air Cushion, All Terrain Vehicle, Rollagon, Bargecable, Nodwell, and Snow Cat; Hydro Ax: Feller Buncher and similar; Loaders (2 1/2 yards through 5 yards, including all attachments): Forklifts with telescopic boom and swing attachment, Overhead and front end, 2 1/2 yards through 5 yards, Loaders with forks or pipe clamps; Loaders, elevating belt type, Euclid and similar types; Mechanics, Bodyman; Micro Tunneling Machine; Mixers: Mobile type w/hoist combination; Motor Patrol Grader; Mucking Machines: Mole, Tunnel Drill, Horizontal/Directional Drill Operator, and/or Shield; Operator on Dredges; Piledriver Engineers, L. B. Foster, Puller or similar Paving Breaker; Power Plant, Turbine Operator, 200 k.w. and over (power plants or combination of power units over 300 k.w.); Scrapers-through 40 yards; Service Oiler/Service Engineer; Sidebooms-under 45 tons; Shot Blast Machine; Shovels, Backhoes, Excavators with all attachments, and Gradealls (3 yards and under), Spreaders, Blaw Knox, Cedarapids, Barber Greene, Slurry Machine; Sub-grader (Gurries, Reclaimer, and similar types); Tack tractor; Truck mounted Concrete Pumps, Conveyor, Creter; Water Kote Machine; Unlicensed off road hauler

GROUP 1A: Camera/Tool /Video Operator (Slipline), Cranes-over 45 tons or 150 foot (including jib and attachments): (a) Clamshells and Draglines (over 3 yards), (b) Tower cranes; Licensed Water/Waste Water Treatment Operator; Loaders over 5 yds.; Certified Welder, Electrical Mechanic, Camp Maintenance Engineer, Mechanic (over 10,000 hours); Motor Patrol Grader, Dozer, Grade Tractor, Roto-mill/Profiler (finish: when finishing to final grade and/or to hubs, or for asphalt); Power Plants: 1000 k.w. and over; Quad; Screed; Shovels, Backhoes, Excavators with all attachments (over 3 yards), Sidebooms over 45 tons; Slip Form Paver, C.M.I. and similar types; Scrapers over 40 yards;

GROUP 2: Boiler-fireman; Cement Hog and Concrete Pump Operator; Conveyors (except as listed in group 1); Hoist on steel erection; Towermobiles and Air Tuggers; Horizontal /Directional Drill Locator; Licensed Grade Technician; Loaders, (i.e., Elevating Grader and Material Transfer Vehicle); Locomotives: rod and geared engines; Mixers; Screening, Washing Plant; Sideboom (cradling rock drill regardless of size); Skidder; Trencing Machine under 16 inches; Waste/ Waste Water Treatment Operator.

GROUP 3: "A" Frame Trucks, Deck Winches: single power drum; Bombardier (tack or tow rig); Boring Machine; Brooms-power;

ak1.dvb.txt

Bump Cutter; Compressor; Farm tractor; Forklift, industrial type; Gin Truck or Winch Truck with poles when used for hoisting; Grade Checker and Stake Hopper; Hoist, Air Tuggers, Elevators; Loaders: (a) Elevating-Athey, Barber Green and similar types (b) Forklifts or Lumber Carrier (on construction job site) (c) Forklifts with Tower (d) Overhead and Front-end, under 2 1/2 yds. Locomotives: Dinkey (air, steam, gas and electric) Speeders; Mechanics (light duty); Oil, Blower Distribution; Post Hole Diggers, mechanical; Pot Fireman (power agitated); Power Plant, Turbine Operator, under 200 k.w.; Pumps-water; Roller-other than Plantmix; Saws, concrete; Skid Steer with all attachments; Straightening Machine; Tow Tractor

GROUP 4: Rig Oiler/Crane Assistant Engineer; Parts and Equipment Coordinator; Swamper (on trenching machines or shovel type equipment); Spotter; Steam Cleaner; Drill Helper.

FOOTNOTE: Groups 1-4 receive 10% premium while performing tunnel or underground work. Rig Oiler/Crane Assistant Engineer shall be required on cranes over 85 tons or over 100 feet of boom.

IRON0751-003 07/01/2015

	Rates	Fringes
Ironworkers:		
BRIDGE, STRUCTURAL,		
ORNAMENTAL, REINFORCING		
MACHINERY MOVER, RIGGER,		
SHEETER, STAGE RIGGER,		
BENDER OPERATOR.....	\$ 36.25	28.05
FENCE, BARRIER INSTALLER....	\$ 32.75	28.05
GUARDRAIL INSTALLERS.....	\$ 33.75	28.05
GUARDRAIL LAYOUT MAN.....	\$ 33.49	28.05
HELICOPTER, TOWER.....	\$ 37.25	28.05

LAB00341-005 04/01/2015

	Rates	Fringes
Laborers: South of the 63rd		
Parallel & West of Longitude		
138 Degrees		
GROUP 1.....	\$ 29.79	24.83
GROUP 2.....	\$ 30.79	24.83
GROUP 3.....	\$ 31.69	24.83
GROUP 3A.....	\$ 34.97	24.83
GROUP 3B.....	\$ 35.80	24.83
GROUP 4.....	\$ 19.36	24.83
TUNNELS, SHAFTS, AND RAISES		
GROUP 1.....	\$ 32.77	24.83
GROUP 2.....	\$ 33.87	24.83
GROUP 3.....	\$ 34.86	24.83
GROUP 3A.....	\$ 38.47	24.83
GROUP 3B.....	\$ 39.38	24.83

LABORERS CLASSIFICATIONS

GROUP 1: Asphalt Workers (shovel man, plant crew); Brush
Page 5

ak1.dvb.txt

Cutters; Camp Maintenance Laborer; Carpenter Tenders; Choke Setters; Hook Tender, Rigger, Signaller; Concrete Laborer (curb and gutter, chute handler, grouting, curing, screeding); Crusher Plant Laborer; Demolition Laborer; Ditch Diggers; Dump Man; Environmental Laborer (asbestos (limited to nonmechanical systems), hazardous and toxic waste, oil spill); Fence Installer; Fire Watch Laborer; Flagman; Form Strippers; General Laborer; Guardrail Laborer, Bridge Rail Installers; Hydro-Seeder Nozzlemans; Laborers (building); Landscape or Planter; Laying of Decorative Block (retaining walls, flowered decorative block 4 feet and below); Material Handlers; Pneumatic or Power Tools; Portable or Chemical Toilet Serviceman; Pump Man or Mixer Man; Railroad Track Laborer; Sandblast, Pot Tender; Saw Tenders; Scaffold Building and Erecting; Slurry Work; Stake Hopper; Steam Point or Water Jet Operator; Steam Cleaner Operator; Tank Cleaning; Utiliwalk, Utilidor Laborer and Conduit Installer; Watchman (construction projects); Window Cleaner

GROUP 2: Burning and Cutting Torch; Cement or Lime Dumper or Handler (sack or bulk); Choker Splicer; Chucktender (wagon, airtrack and hydraulic drills); Concrete Laborers (power buggy, concrete saws, pumpcrete nozzlemans, vibratormans); Culvert Pipe Laborer; Cured in place Pipelayer; Environmental Laborer (marine work, oil spill skimmer operator, small boat operator); Foam Gun or Foam Machine Operator; Green Cutter (dam work); Gunnite Operator; Hod Carriers; Jackhammer or Pavement Breakers (more than 45 pounds); Laying of Decorative Block (retaining walls, flowered decorative block above 4 feet); Mason Tender and Mud Mixer (sewer work); Pilot Car; Plasterer, Bricklayer and Cement Finisher Tenders; Power Saw Operator; Railroad Switch Layout Laborer; Sandblaster; Sewer Caulkers; Sewer Plant Maintenance Man; Thermal Plastic Applicator; Timber Faller, chain saw operator, filer; Timberman

GROUP 3: Alarm Installer; Bit Grinder; Guardrail Machine Operator; High Rigger and tree topper; High Scaler; Multiplate; Slurry Seal Squeegee Man

GROUP 3A: Asphalt Raker, Asphalt Belly dump lay down; Drill Doctor (in the field); Drillers (including, but not limited to, wagon drills, air track drills; hydraulic drills); Powderman; Pioneer Drilling and Drilling Off Tugger (all type drills); Pipelayers

GROUP 3B: Grade checker (setting or transferring of grade marks, line and grade)

GROUP 4: Final Building Cleanup

TUNNELS, SHAFTS, AND RAISES CLASSIFICATIONS

GROUP 1: Brakeman; Muckers; Nippers; Topman and Bull Gang; Tunnel Track Laborer

GROUP 2: Burning and Cutting Torch; Concrete Laborers; Jackhammers; Nozzlemans, Pumpcrete or Shotcrete.

GROUP 3: Miner; Retimberman

GROUP 3A: Asphalt Raker, Asphalt Belly dump lay down; Drill

ak1.dvb.txt

Doctor (in the field); Drillers (including, but not limited to, wagon drills, air track drills; hydraulic drills); Powderman; Pioneer Drilling and Drilling Off Tugger (all type drills); Pipelayers.

GROUP 3B: Grade checker (setting or transferring of grade marks, line and grade)

Tunnel shaft and raise rates only apply to workers regularly employed inside a tunnel portal or shaft collar.

LAB00942-001 04/01/2015

	Rates	Fringes
Laborers: North of the 63rd Parallel & East of Longitude 138 Degrees		
GROUP 1.....	\$ 29.79	24.83
GROUP 2.....	\$ 30.79	24.83
GROUP 3.....	\$ 31.69	24.83
GROUP 3A.....	\$ 34.97	24.83
GROUP 3B.....	\$ 35.80	24.83
GROUP 4.....	\$ 19.36	24.83
TUNNELS, SHAFTS, AND RAISES		
GROUP 1.....	\$ 32.77	24.83
GROUP 2.....	\$ 33.87	24.83
GROUP 3.....	\$ 34.86	24.83
GROUP 3A.....	\$ 38.47	24.83
GROUP 3B.....	\$ 39.38	24.83

LABORERS CLASSIFICATIONS

GROUP 1: Asphalt Workers (shovelman, plant crew); Brush Cutters; Camp Maintenance Laborer; Carpenter Tenders; Choke Setters, Hook Tender, Rigger, Signalman; Concrete Laborer (curb and gutter, chute handler, grouting, curing, screeding); Crusher Plant Laborer; Demolition Laborer; Ditch Diggers; Dump Man; Environmental Laborer (asbestos (limited to nonmechanical systems), hazardous and toxic waste, oil spill); Fence Installer; Fire Watch Laborer; Flagman; Form Strippers; General Laborer; Guardrail Laborer, Bridge Rail Installers; Hydro-Seeder Nozzlemans; Laborers (building); Landscape or Planter; Laying of Decorative Block (retaining walls, flowered decorative block 4 feet and below); Material Handlers; Pneumatic or Power Tools; Portable or Chemical Toilet Serviceman; Pump Man or Mixer Man; Railroad Track Laborer; Sandblast, Pot Tender; Saw Tenders; Scaffold Building and Erecting; Slurry Work; Stake Hopper; Steam Point or Water Jet Operator; Steam Cleaner Operator; Tank Cleaning; Utiliwalk, Utilidor Laborer and Conduit Installer; Watchman (construction projects); Window Cleaner

GROUP 2: Burning and Cutting Torch; Cement or Lime Dumper or Handler (sack or bulk); Choker Splicer; Chucktender (wagon, airtrack and hydraulic drills); Concrete Laborers (power buggy, concrete saws, pumpcrete nozzle man, vibratorman); Culvert Pipe Laborer; Cured in place Pipelayer; Environmental Laborer (marine work, oil spill skimmer operator, small boat operator); Foam Gun or Foam Machine Operator; Green Cutter (dam work); Gunnite Operator; Hod

ak1.dvb.txt

Carriers; Jackhammer or Pavement Breakers (more than 45 pounds); Laying of Decorative Block (retaining walls, flowered decorative block above 4 feet); Mason Tender and Mud Mixer (sewer work); Pilot Car; Plasterer, Bricklayer and Cement Finisher Tenders; Power Saw Operator; Railroad Switch Layout Laborer; Sandblaster; Sewer Caulkers; Sewer Plant Maintenance Man; Thermal Plastic Applicator; Timber Faller, chain saw operator, filer; Timberman

GROUP 3: Alarm Installer; Bit Grinder; Guardrail Machine Operator; High Rigger and tree topper; High Scaler; Multiplate; Slurry Seal Squeegee Man

GROUP 3A: Asphalt Raker, Asphalt Belly dump lay down; Drill Doctor (in the field); Drillers (including, but not limited to, wagon drills, air track drills; hydraulic drills); Powderman; Pioneer Drilling and Drilling Off Tugger (all type drills); Pipelayers

GROUP 3B: Grade checker (setting or transferring of grade marks, line and grade)

GROUP 4: Final Building Cleanup

TUNNELS, SHAFTS, AND RAISES CLASSIFICATIONS

GROUP 1: Brakeman; Muckers; Nippers; Topman and Bull Gang; Tunnel Track Laborer

GROUP 2: Burning and Cutting Torch; Concrete Laborers; Jackhammers; Nozzlemans, Pumpcrete or Shotcrete.

GROUP 3: Miner; Retimberman

GROUP 3A: Asphalt Raker, Asphalt Belly dump lay down; Drill Doctor (in the field); Drillers (including, but not limited to, wagon drills, air track drills; hydraulic drills); Powderman; Pioneer Drilling and Drilling Off Tugger (all type drills); Pipelayers.

GROUP 3B: Grade checker (setting or transferring of grade marks, line and grade)

Tunnel shaft and raise rates only apply to workers regularly employed inside a tunnel portal or shaft collar.

PAIN1959-001 09/01/2015

NORTH OF THE 63RD PARALLEL

	Rates	Fringes
PAINTER		
BRUSH/ROLLER PAINT OR WALL COVERER.....	\$ 32.07	20.01
TAPING, TEXTURING, STRUCTURAL PAINTING, SANDBLASTING, POT TENDER, FINISH METAL, SPRAY, BUFFER OPERATOR, RADON MITIGATION, LEAD BASED PAINT ABATEMENT, HAZARDOUS		

MATERIAL HANDLER. \$ 32.59 20.01

PAIN1959-002 07/01/2015

SOUTH OF THE 63RD PARALLEL

Rates Fri nges

PAINTER

Brush, Roller, Sign, Paper
and Vinyl, Swing Stage,
Hand Taper/Drywall,
Structural Steel, and
Commercial Spray. \$ 29.71 19.61
Machine Taper/Drywall. \$ 30.96 19.61
Spray-Sand/Blast, Epoxy
and Tar Applicator. \$ 31.06 19.61

PAIN1959-003 07/01/2015

NORTH OF THE 63RD PARALLEL

Rates Fri nges

GLAZIER. \$ 37.88 20.04

PAIN1959-004 07/01/2012

Rates Fri nges

FLOOR LAYER: Carpet. \$ 30.09 13.02

PAIN1959-006 07/01/2015

SOUTH OF THE 63RD PARALLEL

Rates Fri nges

GLAZIER. \$ 37.88 20.04

PLAS0867-001 02/01/2015

Rates Fri nges

PLASTERER

North of the 63rd parallel.. \$ 36.94 20.22
South of the 63rd parallel.. \$ 36.69 20.22

PLAS0867-004 02/01/2015

Rates Fri nges

CEMENT MASON/CONCRETE FINISHER

North of the 63rd parallel.. \$ 36.69 20.22
South of the 63rd parallel.. \$ 36.44 20.22

PLUM0262-002 07/01/2013

East of the 141st Meridian

Rates Fri nges

Plumber; Steamfitter. \$ 36.02 25.62

 PLUM0367-002 07/01/2013

South of the 63rd Parallel

	Rates	Fri nges
Plumber; Steamfitter.....	\$ 38.46	20.74

* PLUM0375-002 07/01/2015

North of the 63rd Parallel

	Rates	Fri nges
Plumber; Steamfitter.....	\$ 41.21	22.45

PLUM0669-002 07/01/2013

	Rates	Fri nges
SPRINKLER FITTER.....	\$ 42.05	21.67

SHEE0023-003 07/01/2015

South of the 63rd Parallel

	Rates	Fri nges
SHEET METAL WORKER.....	\$ 40.79	22.38

SHEE0023-004 07/01/2015

North of the 63rd Parallel

	Rates	Fri nges
SHEET METAL WORKER.....	\$ 45.93	21.44

TEAM0959-003 09/01/2015

	Rates	Fri nges
TRUCK DRIVER		
GROUP 1.....	\$ 39.29	21.17
GROUP 1A.....	\$ 30.56	21.17
GROUP 2.....	\$ 38.03	21.17
GROUP 3.....	\$ 37.21	21.17
GROUP 4.....	\$ 36.63	21.17
GROUP 5.....	\$ 35.87	21.17

GROUP 1: Semi with Double Box Mixer; Dump Trucks (including rockbuggy and trucks with pups) over 40 yards up to and including 60 yards; Del tas, Commanders, Rolligans and similar equipment when pulling sleds, trailers or similar equipment; Boat Coxswain; Lowboys including attached trailers and jeeps, up to and including 12 axles; Ready-mix over 12 yards up to and including 15 yards); Water Wagon (250 Bbls and above); Tireman, Heavy Duty/Fueler

GROUP 1A: Dump Trucks (including Rockbuggy and Trucks with pups) over 60 yards up to and including 100 yards; Jeeps (driver under load)

GROUP 2: Turn-0-Wagon or DW-10 not self-loading; All Deltas, Commanders, Rollogans, and similar equipment; Mechanics; Dump Trucks (including Rockbuggy and Trucks with pups) over 20 yards up to and including 40 yards; Lowboys including attached trailers and jeeps up to and including 8 axles; Super vac truck/cacasco truck/heat stress truck; Ready-mix over 7 yards up to and including 12 yards; Partsman; Stringing Truck

GROUP 3: Dump Trucks (including Rockbuggy and Trucks with pups) over 10 yards up to and including 20 yards; batch trucks 8 yards and up; Oil distributor drivers; Oil Distributor Drivers; Trucks/Jeeps (push or pull); Traffic Control Technician

GROUP 4: Buggymobile; Semi or Truck and trailer; Dumpster; Tireman (light duty); Dump Trucks (including Rockbuggy and Truck with pups) up to and including 10 yards; Track Truck Equipment; Grease Truck; Flat Beds, dual rear axle; Hyster Operators (handling bulk aggregate); Lumber Carrier; Water Wagon, semi; Water Truck, dual axle; Gin Pole Truck, Winch Truck, Wrecker, Truck Mounted "A" Frame manufactured rating over 5 tons; Bull Lifts and Fork Lifts with Power Boom and Swing attachments, over 5 tons; Front End Loader with Forks; Bus Operator over 30 passengers; All Terrain Vehicles; Boom Truck/Knuckle Truck over 5 tons; Foam Distributor Truck/dual axle; Hydro-seeders, dual axle; Vacuum Trucks, Truck Vacuum Sweepers; Loadmaster (air and water); Air Cushion or similar type vehicle; Fire Truck/Ambulance Driver; Combination Truck-fuel and grease; Compactor (when pulled by rubber tired equipment); Rigger (air/water/oil field); Ready Mix, up to and including 7 yards;

GROUP 5: Gravel Spreader Box Operator on Truck; Flat Beds, single rear axle; Boom Truck/Knuckle Truck up to and including 5 tons; Pickups (Pilot Cars and all light duty vehicles); Water Wagon (Below 250 Bbls); Gin Pole Truck, Winch Truck, Wrecker, Truck Mounted "A" Frame, manufactured rating 5 tons and under; Bull Lifts and Fork Lifts (fork lifts with power broom and swing attachments up to and including 5 tons); Buffer Truck; Tack Truck; Farm type Rubber Tired Tractor (when material handling or pulling wagons on a construction project); Foam Distributor, single axle; Hydro-Seeders, single axle; Team Drivers (horses, mules and similar equipment); Fuel Handler (station/bulk attendant); Batch Truck, up to and including 7 yards; Gear/Supply Truck; Bus Operator, Up to 30 Passengers; Rigger/Swamper

WELDERS - Receive rate prescribed for craft performing operation to which welding is incidental.

=====
Unlisted classifications needed for work not included within the scope of the classifications listed may be added after award only as provided in the labor standards contract clauses (29CFR 5.5 (a) (1) (ii)).

The body of each wage determination lists the classification and wage rates that have been found to be prevailing for the cited type(s) of construction in the area covered by the wage determination. The classifications are listed in alphabetical order of "identifiers" that indicate whether the particular rate is a union rate (current union negotiated rate for local), a survey rate (weighted average rate) or a union average rate (weighted union average rate).

Union Rate Identifiers

A four letter classification abbreviation identifier enclosed in dotted lines beginning with characters other than "SU" or "UAVG" denotes that the union classification and rate were prevailing for that classification in the survey. Example: PLUM0198-005 07/01/2014. PLUM is an abbreviation identifier of the union which prevailed in the survey for this classification, which in this example would be Plumbers. 0198 indicates the local union number or district council number where applicable, i.e., Plumbers Local 0198. The next number, 005 in the example, is an internal number used in processing the wage determination. 07/01/2014 is the effective date of the most current negotiated rate, which in this example is July 1, 2014.

Union prevailing wage rates are updated to reflect all rate changes in the collective bargaining agreement (CBA) governing this classification and rate.

Survey Rate Identifiers

Classifications listed under the "SU" identifier indicate that no one rate prevailed for this classification in the survey and the published rate is derived by computing a weighted average rate based on all the rates reported in the survey for that classification. As this weighted average rate includes all rates reported in the survey, it may include both union and non-union rates. Example: SULA2012-007 5/13/2014. SU indicates the rates are survey rates based on a weighted average calculation of rates and are not majority rates. LA indicates the State of Louisiana. 2012 is the year of survey on which these classifications and rates are based. The next number, 007 in the example, is an internal number used in producing the wage determination. 5/13/2014 indicates the survey completion date for the classifications and rates under that identifier.

Survey wage rates are not updated and remain in effect until a new survey is conducted.

Union Average Rate Identifiers

Classification(s) listed under the UAVG identifier indicate that no single majority rate prevailed for those classifications; however, 100% of the data reported for the classifications was union data. EXAMPLE: UAVG-OH-0010 08/29/2014. UAVG indicates that the rate is a weighted union average rate. OH indicates the state. The next number, 0010 in the example, is an internal number used in producing the wage

determination. 08/29/2014 indicates the survey completion date for the classifications and rates under that identifier.

A UAVG rate will be updated once a year, usually in January of each year, to reflect a weighted average of the current negotiated/CBA rate of the union locals from which the rate is based.

WAGE DETERMINATION APPEALS PROCESS

1.) Has there been an initial decision in the matter? This can be:

- * an existing published wage determination
- * a survey underlying a wage determination
- * a Wage and Hour Division letter setting forth a position on a wage determination matter
- * a conformance (additional classification and rate) ruling

On survey related matters, initial contact, including requests for summaries of surveys, should be with the Wage and Hour Regional Office for the area in which the survey was conducted because those Regional Offices have responsibility for the Davis-Bacon survey program. If the response from this initial contact is not satisfactory, then the process described in 2.) and 3.) should be followed.

With regard to any other matter not yet ripe for the formal process described here, initial contact should be with the Branch of Construction Wage Determinations. Write to:

Branch of Construction Wage Determinations
Wage and Hour Division
U. S. Department of Labor
200 Constitution Avenue, N. W.
Washington, DC 20210

2.) If the answer to the question in 1.) is yes, then an interested party (those affected by the action) can request review and reconsideration from the Wage and Hour Administrator (See 29 CFR Part 1.8 and 29 CFR Part 7). Write to:

Wage and Hour Administrator
U. S. Department of Labor
200 Constitution Avenue, N. W.
Washington, DC 20210

The request should be accompanied by a full statement of the interested party's position and by any information (wage payment data, project description, area practice material, etc.) that the requestor considers relevant to the issue.

3.) If the decision of the Administrator is not favorable, an interested party may appeal directly to the Administrative Review Board (formerly the Wage Appeals Board). Write to:

Administrative Review Board
U. S. Department of Labor
200 Constitution Avenue, N. W.

Washington, DC 20210

4.) All decisions by the Administrative Review Board are final.

=====

END OF GENERAL DECISION



DEPARTMENT OF THE ARMY
ALASKA DISTRICT, U.S. ARMY CORPS OF ENGINEERS
REGULATORY DIVISION
44669 STERLING HIGHWAY, SUITE B
SOLDOTNA, ALASKA 99669

December 23, 2015

Regulatory Division
POA-2015-608

Mr. Robert Lund
City of Unalaska
P.O. Box 610
Unalaska, Alaska 99685

Dear Mr. Lund:

This letter responds to your November 16, 2015 application (received November 24, 2015) for a Department of the Army (DA) permit to discharge 706 cubic yards of dredged and fill material into 0.2 acre of wetlands adjacent to the Iliuliuk River to construct a settling pond for the purpose of reducing sediment entering Unalaska Lake. The project would include modification to the existing storm drain system adjacent to Steward Road. The modified storm drain system would outlet into an existing depression adjacent to the Iliuliuk River. The outlet would be placed on an energy dissipater, which includes a concrete barrel and riprap. Additionally, a berm with a weir overflow would be constructed to allow settling and increase infiltration. It has been assigned file number POA-2015-608, Iliuliuk River, which should be referred to in all future correspondence with this office. The project site is located within Section 14, Township 73 S., Range 118 W., Seward Meridian; USGS Quad Map AK-Unalaska C-2; Latitude 53.861 ° N., Longitude 166.512 ° W.; Aleutians West Borough, in Unalaska, Alaska.

Based on our review of the information you furnished and available to us, we have preliminarily determined the above project area contains waters of the United States (U.S.), including wetlands, under the Corps' regulatory jurisdiction. Please see the attached Preliminary Jurisdictional Determination Form.

DA permit authorization is necessary because your project would involve placement of dredged and fill material into waters of the U.S. under our regulatory jurisdiction.

Based upon the information and plans you provided, we hereby verify that the work described above, which would be performed in accordance with the enclosed plan,

Sheets 1-3, dated November 13, 2015, is authorized by Nationwide Permit (NWP) No. 43, Stormwater Management Facilities. NWP No. 43 and its associated Regional and General Conditions can be accessed at our website at: www.poa.usace.army.mil/Missions/Regulatory/Permits.aspx. Regional Conditions E, F and G apply to your project. You must comply with all terms and conditions associated with NWP No. 43.

Further, please note General Condition 30 requires that you submit a signed certification to us once any work and required mitigation are completed. Enclosed is the form for you to complete and return to us.

The Nationwide Permits are due to expire on March 18, 2017, unless the NWP is modified, reissued, or revoked. It is incumbent upon you to remain informed of changes to the NWPs. Nothing in this letter excuses you from compliance with other Federal, State, or local statutes, ordinances, or regulations.

Please contact me via email at Michael.t.setering@usace.army.mil, by mail at the address above, or by phone at (907) 753-2627 if you have questions or to request paper copies of the regional and/or general conditions. For more information about the Regulatory Program, please visit our website at <http://www.poa.usace.army.mil/Missions/Regulatory.aspx>.

Sincerely,

A handwritten signature in black ink, appearing to read "Michael Setering". The signature is fluid and cursive, with the first name "Michael" being more prominent than the last name "Setering".

Michael Setering
Regulatory Specialist

Enclosures

CF:

ADEC: james.rypkema@alaska.gov
ADEC: shannon.dewandel@alaska.gov
ADF&G: megan.marie@alaska.gov
ADNR-DMLW: michael.walton@alaska.gov
ADNR-DMLW: dnr.scro.dcom.cor@alaska.gov
SHPO-OHA: oha.revcomp@alaska.gov
USEPA: AOOARU.R10@epamail.epa.gov
NMFS-Anchorage: HCD.Anchorage@noaa.gov
USFWS-Kenai: R7_Kenai_Fish_Comment@fws.gov
USFWS: john_hudson@fws.gov

ENCLOSURE



US Army Corps of Engineers
Alaska District

Permit Number: POA-2015-608

Name of Permittee: Mr. Robert Lund

Date of Issuance: December 23, 2015

Upon completion of the activity authorized by this permit and any mitigation required by the permit, sign this certification and return it to Mr. Michael Setering at the following address:

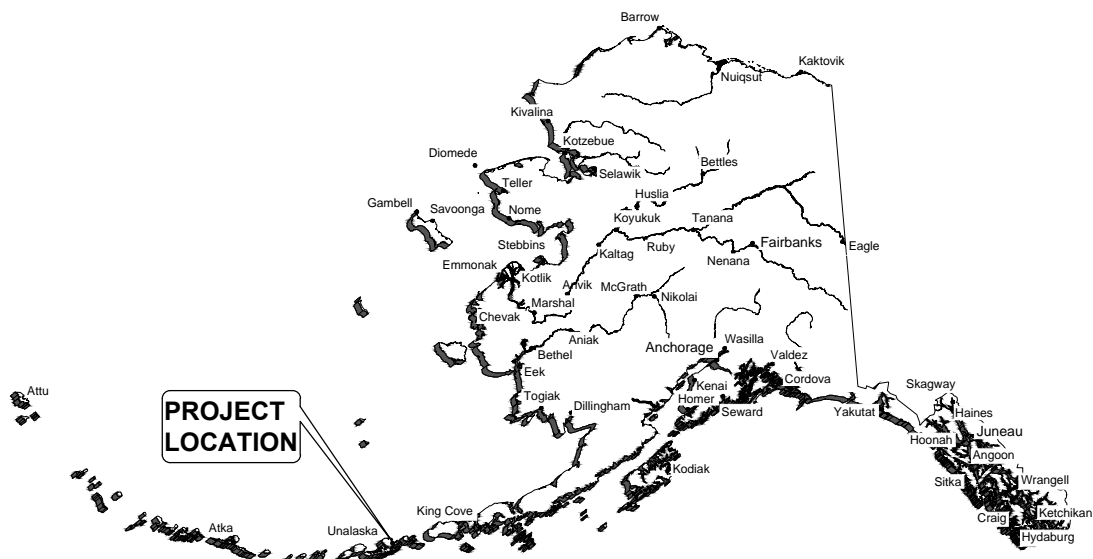
U.S. Army Corps of Engineers
Alaska District
Regulatory Division
44669 Sterling Highway, Suite B
Soldotna, Alaska 99669-7915

Please note that your permitted activity is subject to a compliance inspection by an U.S. Army Corps of Engineers representative. If you fail to comply with this permit you are subject to permit suspension, modification, or revocation.

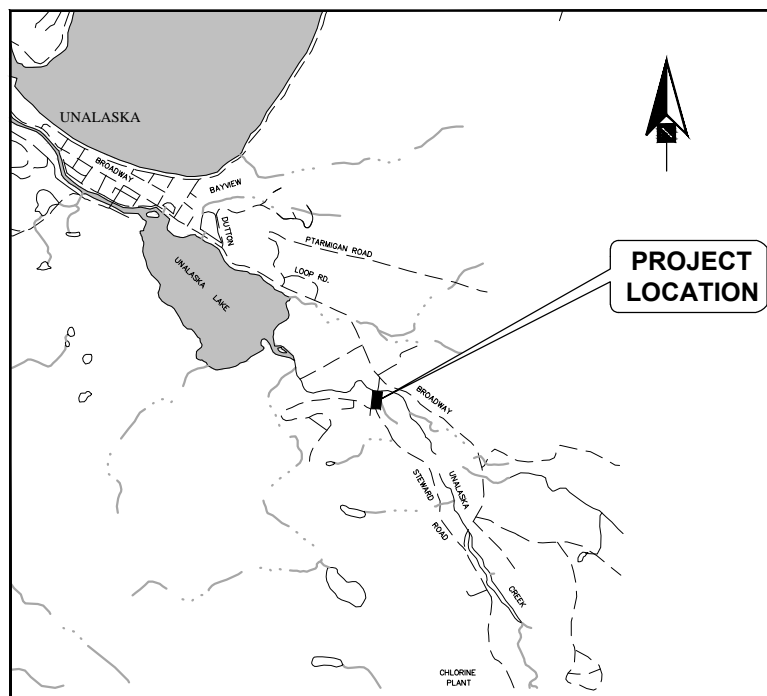
I hereby certify that the work authorized by the above-referenced permit has been completed in accordance with the terms and conditions of the said permit, and required mitigation was completed in accordance with the permit conditions.

Signature of Permittee

Date



STATE OF ALASKA



PROJECT VICINITY

PROPOSED ACTIVITY:
CONSTRUCT A BERM AND
ENERGY DISSIPATER FOR A
NEW SETTLING POND

DATUM: 0.0' MLLW
PROJECT LOCATION:
53.861°N LAT. -166.512°W LONG.
S13, T73S R118W
SEWARD MERIDIAN

VICINITY MAP

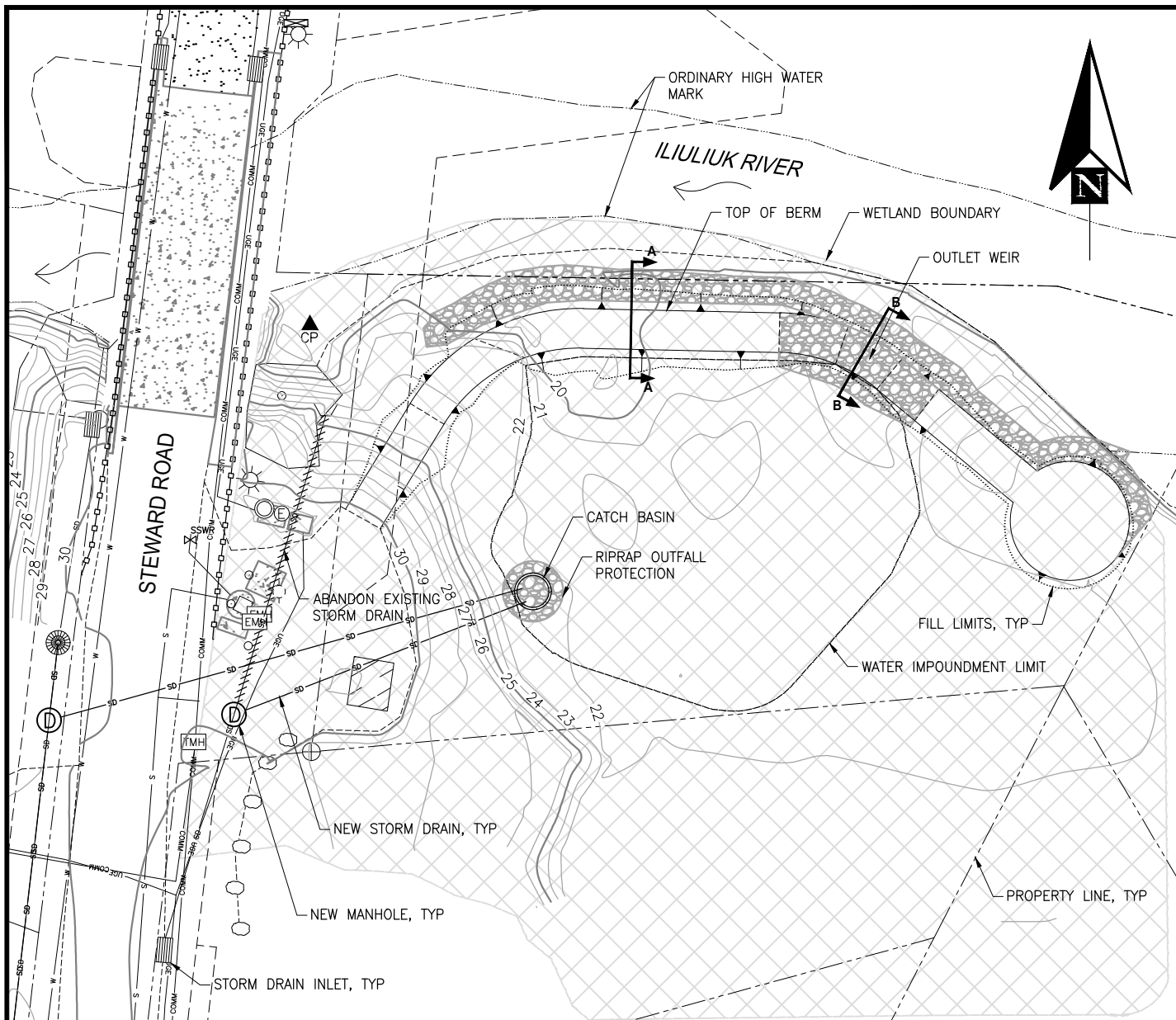
CITY OF UNALASKA
DEPARTMENT OF PUBLIC WORKS/
PUBLIC UTILITIES
PO BOX 610
UNALASKA, ALASKA 99685

UNALASKA STEWART ROAD SETTLING POND

POA-XXXX-XXXX
AT: UNALASKA, AK

11/13/15

SHEET **1 of 3**



LEGEND



PROJECT COMPONENT	GRAVEL FILL IN WETLANDS (CY)	RIPRAP ROCK IN WETLANDS (CY)	EXCAVATION IN WETLANDS (CY)	TOTAL FOOTPRINT IN WETLANDS (ACRE)
STORM DRAIN	10	21	150	0.02
BERM	390	135	0	0.18
TOTAL PROJECT	400	156	150	0.20

PROPOSED ACTIVITY:
CONSTRUCT A BERM AND
ENERGY DISSIPATER FOR A
NEW SETTLING POND

DATUM: 0.0' MLLW
PROJECT LOCATION:
53.861°N LAT. -166.512°W LONG.
S13, T73S R118W
SEWARD MERIDIAN

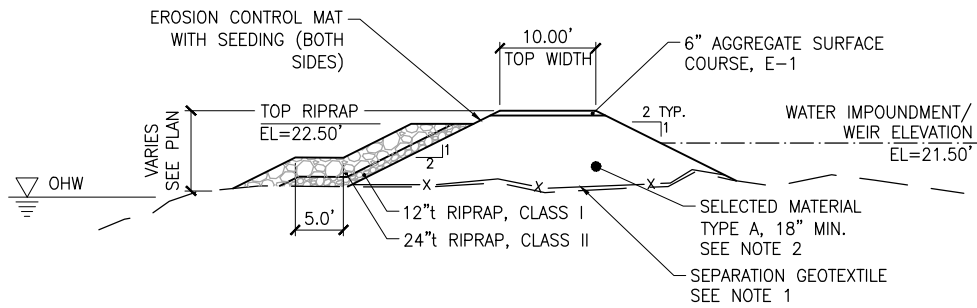
PLAN

CITY OF UNALASKA
DEPARTMENT OF PUBLIC WORKS/
PUBLIC UTILITIES
PO BOX 610
UNALASKA, ALASKA 99685

UNALASKA STEWART ROAD SETTLING POND

POA-XXXX-XXXX
AT: UNALASKA, AK

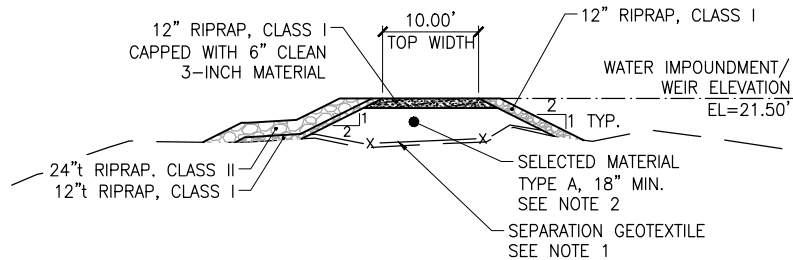
11/13/15 SHEET **2 of 3**



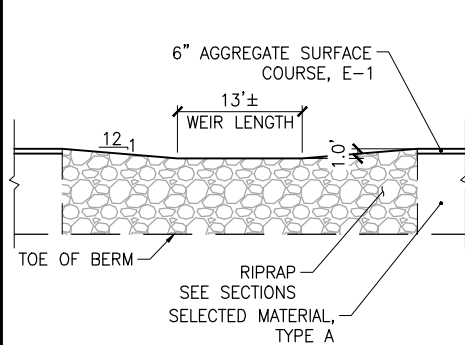
A-A BERM SECTION

NOTES:

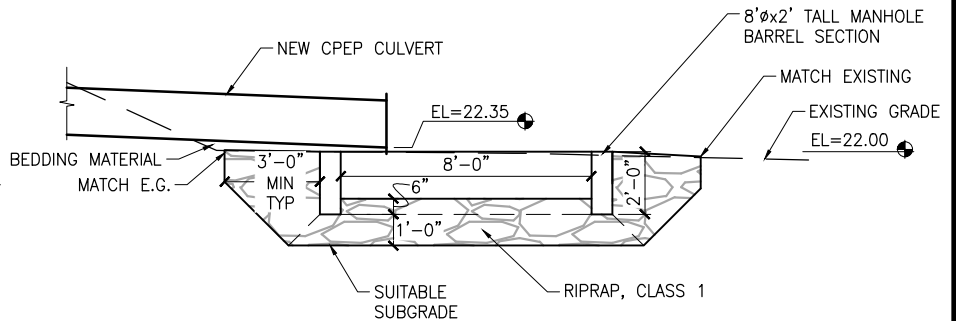
1. EXISTING GRADE MAY BE SOFT AND SATURATED. CONTRACTOR SHALL PROVIDE ANY ADDITIONAL MEASURES REQUIRED TO CONSTRUCT THE EARTHEN BERM AT THEIR OWN COST.
2. EXCAVATE AS NECESSARY TO PROVIDE MINIMUM THICKNESS.



B-B WEIR SECTION



OUTLET WEIR ELEVATION



STORM DRAIN DETAIL

PROPOSED ACTIVITY:
CONSTRUCT A BERM AND
ENERGY DISSIPATER FOR A
NEW SETTLING POND

DATUM: 0.0' MLLW
PROJECT LOCATION:
53.861°N LAT. -166.512°W LONG.
S13, T73S R118W
SEWARD MERIDIAN

DETAILS

CITY OF UNALASKA
DEPARTMENT OF PUBLIC WORKS/
PUBLIC UTILITIES
PO BOX 610
UNALASKA, ALASKA 99685

**UNALASKA
STEWART ROAD
SETTLING POND**

POA-XXXX-XXXX
AT: UNALASKA, AK

11/13/15 SHEET **3 of 3**

Preliminary Jurisdictional Determination Form

Page 1 of 2

This preliminary JD find that there "may be" waters of the United States on the subject project site that could be affected by the proposed activity based on the following information:

District Office		Kenai Field Office		File/ORM #		POA-2015-608		PJD Date		Dec 23, 2015					
State				City/County		Unalaska/ABW		Name and Address of Person Requesting PJD Mr. Robert Lund City of Unalaska PO Box 610 Unalaska, Alaska 99685							
Nearest Waterbody		Iliuliuk River													
Project Location		Section(s)		Township											
		14		73		S									
Meridian		Seward		Range		118		W							
USGS Quad Map		AK-Unalaska C-2		Latitude		53.861		N		Longitude		166.512		W	
Subdivision Name, Block, Lot, Directions to Project Site															

Identify (Estimate) Amount of Waters in the Review Area				Stream Flow		Name of Any Water Bodies on the Site Identified as Section 10 Waters:		Tidal:			
<u>Non-Wetland Waters:</u>								Non-Tidal:			
		Linear ft		Width		Acres					
<u>Wetlands</u>								<input type="checkbox"/> Office (Desk) Determination <input type="checkbox"/> Field Determination		Date of Site Visit:	
2		Acres		Cowardin Class:		Palustrine, emergent					

SUPPORTING DATA: Data Review for Preliminary JD (check all that apply - checked items should be included in case file and, where checked and requested, appropriately reference sources below)

☒ Maps, plans, plots or plat submitted by or on behalf of the applicant/consultant:

☐ Data sheets prepared/submitted by or on behalf of the applicant/consultant.

☐ Office concurs with data sheets/delineation report.

☐ Office does not concur with data sheets/delineation report.

☐ Data Sheet prepared by the Corps

☐ Corps navigable waters' study:

☐ USGS NHD Data.

☐ USGS 8 and 12 digit HUC maps.

☐ U.S. Geological Survey map(s) Cite quad name:

☐ USDA Natural Resources Conservation Service Soil Survey. Citation:

☐ National Wetlands Inventory map(s):

☐ State/Local Wetland Inventory map(s):

☐ FEMA/FIRM map(s):

☐ 100-year Floodplain Elevation:

☒ Photographs:

☒ Aerial (Name & Date) Google Earth - Unknown

☐ Other (Name & Date)

☐ Previous determination(s). File # and date of response letter:

☐ Other Information:

IMPORTANT NOTE: The information recorded on this form has not necessarily been verified by the Corps and should not be relied upon for later jurisdictional determinations.

 20151223
 Signature and Date of Regulatory Project Manager
 (REQUIRED)

 Signature and Date of Person Requesting Preliminary JD
 (REQUIRED, unless obtaining the signature is impracticable)

EXPLANATION OF PRELIMINARY AND APPROVED JURISDICTIONAL DETERMINATIONS: 1. The Corps of Engineers believes that there may be jurisdictional waters of the United States on the subject site, and the permit applicant or other affected party who requested this preliminary JD is hereby advised of his or her option to request and obtain an approved jurisdictional determination (JD) for that site. Nevertheless, the permit applicant or other person who requested this preliminary JD has declined to exercise the option to obtain an approved JD in this instance and at this time. 2. In any circumstance where a permit applicant obtains an individual permit, or a Nationwide General Permit (NWP) or other general permit verification requiring "preconstruction notification" (PCN), or requests verification for a non-reporting NWP or other general permit, and the permit applicant has not requested an approved JD for the activity, the permit applicant is hereby made aware of the following: (1) the permit applicant has elected to seek a permit authorization based on a preliminary JD, which does not make an official determination of jurisdictional waters; (2) that the applicant has the option to request an approved JD before accepting the terms and conditions of the permit authorization, and that basing a permit authorization on an approved JD could possibly result in less compensatory mitigation being required or different special conditions; (3) that the applicant has the right to request an individual permit rather than accepting the terms and conditions of the NWP or other general permit authorization; (4) that the applicant can accept a permit authorization and thereby agree to comply with all the terms and conditions of that permit, including whatever mitigation requirements the Corps has determined to be necessary; (5) that undertaking any activity in reliance upon the subject permit authorization without requesting an approved JD constitutes the applicant's acceptance of the use of the preliminary JD, but that either form of JD will be processed as soon as is practicable; (6) accepting a permit authorization (e.g., signing a proffered individual permit) or undertaking any activity in reliance on any form of Corps permit authorization based on a preliminary JD constitutes agreement that all wetlands and other water bodies on the site affected in any way by that activity are jurisdictional waters of the United States, and precludes any challenge to such jurisdiction in any administrative or judicial compliance or enforcement action, or in any administrative appeal or in any Federal court; and (7) whether the applicant elects to use either an approved JD or a preliminary JD, that JD will be processed as soon as is practicable. Further, an approved JD, a proffered individual permit (and all terms and conditions contained therein), or individual permit denial can be administratively appealed pursuant to 33 C.F.R. Part 331, and that in any administrative appeal, jurisdictional issues can be raised (see 33 C.F.R. 331.5(a)(2)). If, during that administrative appeal, it becomes necessary to make an official determination whether CWA jurisdiction exists over a site, or to provide an official delineation of jurisdictional waters on the site, the Corps will provide an approved JD to accomplish that result, as soon as is practicable.

SEWER LINE LAMP TEST - CERTIFICATION FORM - v.2/06

Reference: Alaska Area Native Health Service (IHS) Sanitation Facilities Guideline No. C-39 (dated 1988)

Community: _____

Test Procedure:

Project Number(s): _____

Superintendent: _____

Printed Name

Superintendent: _____

Signature

Engineer: _____

Printed Name

Engineer: _____

Signature

1. Lamping shall be done after trench is compacted and complete.
2. Shine light at one end (lamped manhole) of each pipe section between manholes.
3. "Full Moon" must be visible (at observation manhole) to "Pass" for grade alignment.
4. At least "Half Moon" must be visible (at observation manhole) to "Pass" for horizontal alignment.
5. Repair poor alignment, displaced pipe, or other defects as needed.
6. Perform new lamp test on any repaired sections.
7. Record final test results in table using abbreviations shown at bottom of this sheet (e.g. "H-3/4" etc.).

Grade
Horizontal Alignment

Date	Street Name	Lamped Manhole I.D. Number	Lamped Manhole Station	Observation Manhole I.D. Number	Observation Manhole Station	Length Between Manholes (feet)	Test Results "Pass" or "Fail"	Printed name of Person Performing Test	A	H
									<input type="radio"/>	<input type="radio"/>
									<input type="radio"/>	<input type="radio"/>
									<input type="radio"/>	<input type="radio"/>
									<input type="radio"/>	<input type="radio"/>
									<input type="radio"/>	<input type="radio"/>
									<input type="radio"/>	<input type="radio"/>
									<input type="radio"/>	<input type="radio"/>

Grade Alignment Test Result Samples:

"G-FULL" "G-1/4" "G-HALF" "G-3/4"



"Pass"



"Fail"



"Fail"



"Fail"

Horizontal Alignment Test Result Samples:

"H-FULL" "H-1/4" "H-HALF" "H-3/4"



"Pass"



"Fail"



"Pass"



"Pass"