

City of Unalaska
SEWAGE LIFT STATION #3 FORCE MAIN REPLACEMENT (FM)
DELTA WAY STORM DRAIN (SD)
DPW Project No. 11503-01
Addendum 1
Page 1 of 2

Addendum No. 1

Owner: City of Unalaska

Project: **SEWAGE LIFT STATION #3 FORCE MAIN REPLACEMENT (FM)**
DELTA WAY STORM DRAIN (SD)
DPW Project No. 11503-01

Date: April 2, 2014

Please acknowledge receipt of this Addendum No. 1 in the appropriate blanks on the bid form.

The following corrections, changes, additions, deletions, revisions, and/or clarifications are hereby made a part of the contract documents for the **SEWAGE LIFT STATION #3 FORCE MAIN REPLACEMENT (FM) / DELTA WAY STORM DRAIN (SD)**. In case of conflicts between this Addendum and previously issued documents, this Addendum shall take precedence.

Item 1: PROJECT MANUAL, Section 00300 BID FORM;

Replace the Bid Proposal – Sewage Lift Station #3 Force Main Replacement (FM) with the attachment..

Narrative: A pay item was added to replace the piping in the existing pump station wet well.

Item 2: PROJECT MANUAL, Technical Specification 01025 MEASUREMENT AND PAYMENT;

Delete this specification in its entirety and replace it with the specification attached to this Addendum.

Narrative: A pay item was added to replace the piping in the existing pump station wet well.

Item 3: PROJECT MANUAL, Technical Specification 02730 SANITARY AND STORM SEWERAGE;

Delete this specification in its entirety and replace it with the specification attached to this Addendum.

Narrative: The pressure test requirements for the storm drain pipe were reduced to match the requirements for a standard gravity sanitary sewer pipe. Waterproofing for storm drain manholes was added to match the requirements provided on the drawings.

Item 4: PROJECT MANUAL, Part 4, Laborers' and Mechanics' MINIMUM RATES OF PAY;

Delete this section in its entirety and replace it with the updated Version Effective April 1, 2014 attached to this Addendum.

Narrative: Title 36 Wage Rates changed on April 1 and the latest set is applicable to this Contract.

City of Unalaska
SEWAGE LIFT STATION #3 FORCE MAIN REPLACEMENT (FM)
DELTA WAY STORM DRAIN (SD)
DPW Project No. 11503-01
Addendum 1
Page 2 of 2

Item 5: DESIGN DRAWINGS, Sheet C-5 of 10 DETAILS – PUMP STATION UPGRADES & NEW VALVE VAULT;

Delete this drawing in its entirety and replace it with the Revised Sheet C-5 attached to this Addendum.

Narrative: The piping in the valve vault was raised. One check valve was relocated. Some requirements were added for work in or near the existing wetwell.

Item 6: DESIGN DRAWINGS, Sheet C-5A of 10 DETAILS – PUMP STATION WETWELL PIPING REPLACEMENT;

Add the newly developed Sheet C-5A attached to this Addendum.

Narrative: The piping in the existing wetwell was observed to be corroded and in immediate need of replacement. This drawing adds work to the project scope including replacement of all of the pump discharge piping in the wetwell. The discharge elevation was raised to make the piping in the valve vault at a more serviceable elevation. Cathodic protection was added to prolong the life of the piping.

Attachments

- Item 1: Revised Bid Proposal Form, Sewage Lift Station #3 Force Main Replacement (FM) (1page)
- Item 2: Revised Specification 01025 Measurement and Payment (8 pages)
- Item 3: Revised Specification 02730 Sanitary and Storm Sewerage (5 pages)
- Item 4: Laborers' and Mechanics' Minimum Rates of Pay, Effective April 1, 2014 (35 pages)
- Item 5: Revised Drawing C-5 DETAILS – PUMP STATON UPGRADES & NEW VALVE VAULT
- Item 6: New Drawing C-5A DETAILS – PUMP STATON WETWELL PIPING REPLACEMENT

End of Addendum No. 1

BID PROPOSAL

City of Unalaska - **SEWAGE LIFT STATION #3 FORCE MAIN REPLACEMENT (FM)**

ITEM NO.	EST. QUANT.	DESCRIPTION (Write Unit Bid Price in Words)	UNIT PRICE	TOTAL PRICE
1	600 Ton	Bedding and Surfacing Material (includes disposal of unsuitable material) _____per ton		
2	700 Ton	Backfill Material (includes disposal of unsuitable material) _____per ton		
3	556 LF	Furnish and Install 6" Ductile Iron Sewer Pipe, Class 52 _____per linear foot		
4	All	Construct Valve Vault _____per lump sum		
5	4 EA	Raise Sanitary Sewer Manhole _____per each		
6	All	Relocate Hydrant and Bollards _____per lump sum		
7	All	Stormwater Pollution Prevention Plan _____per lump sum		
8	All	Site Mobilization and Demobilization _____per lump sum		
9	All	Traffic Maintenance _____per lump sum		
10	All	Replace Wet Well Pump Discharge Piping _____per lump sum		

Bid Price Force Main: _____

**SEWAGE LIFT STATION #3 FORCE MAIN REPLACEMENT -
DELTA WAY STORM DRAIN**

**DIVISION 1
GENERAL
Section 01025
MEASUREMENT AND PAYMENT**

PART 1 - GENERAL

1.1 SCOPE

- A. Payment for the various items of the Bid Schedule, as further specified herein, shall include full compensation to be received by the CONTRACTOR for furnishing all tools, equipment, supplies, and manufactured articles, and for all materials, labor, operations, and incidentals appurtenant to the items of work being described, as necessary to complete the various items of the WORK in accordance with the requirements of the Contract Documents, including all appurtenances thereto, and including all costs of permits and cost of compliance with the regulations of public agencies having jurisdiction, including Safety and Health Requirements of the Occupational Safety and Health Administration of the U.S. Department of Labor (OSHA). No separate payment will be made for any item that is not specifically set forth in the Bid Schedule, and all costs therefore shall be included in the prices named in the Bid Schedule for the various appurtenant items of WORK.

1.2 PAY ITEMS

- A. Pay items indicated in the Bid Form are for bidding and contract purposes only. For Lump Sum bid items, required quantities and measurements supplied or placed in the WORK shall be the full responsibility of the CONTRACTOR.

1.3 PAYMENT

- A. Payment includes full compensation for furnishing all required labor, materials, products, tools, equipment, plant, transportation, services, incidentals, erection, application, or installation of all items of the WORK described or required, and all other costs for the items of WORK completed in place.
- B. Payment for Lump Sum and Unit Cost pay items will be in accordance with the General Conditions and Section 00800 - Supplementary General Conditions.

1.4 NON-PAYMENT FOR REJECTED ITEMS

- A. Payment will not be made for any of the following:
 - 1. Products wasted or disposed of in a manner that is not acceptable.
 - 2. Products determined as unacceptable before or after placement.
 - 3. Products placed beyond the lines and grades of the required WORK.
 - 4. Products remaining on hand at the completion of the WORK.
 - 5. Loading, hauling, and disposing of rejected products.
 - 6. Overly wet or frozen material.
 - 7. Excavation or fill made for the convenience of the CONTRACTOR for any purpose or reason.

PART 2 - PRODUCTS (Not Used)

PART 3- MEASUREMENT AND PAYMENT

3.1 Incidental Work

- A. Several items of work not specifically covered in the Contract Documents will be considered incidental to the cost of the contract. These items include, but are not limited to the following:

**SEWAGE LIFT STATION #3 FORCE MAIN REPLACEMENT -
DELTA WAY STORM DRAIN**

**DIVISION 1
GENERAL
Section 01025
MEASUREMENT AND PAYMENT**

1. Temporary pumping and/or maintenance of service during construction.
2. Restoration of disturbed areas and final grading to restore the ground to uniform grades.
3. Site Safety.
4. Dewatering.
5. Board Insulation.
6. Other items not specifically called out but otherwise necessary for proper construction.

Surveying and as-built drawings are included with furnishing and installing pipe. These items are not associated with pay items and are considered incidental to other work performed under this contract. No separate payment will be made.

“FM” and “SD” designations below refer to the Force Main and/or the Storm Drain portions of the Bid Forms.

3.2 Bedding and Surfacing Material

- A. Measurement: Measurement for Bedding and Surfacing Material shall be per ton of material placed and compacted as detailed in the typical trench section. Bedding material installed with the sewer pipes, valve vault, manholes, hydrant relocation, encountered utilities, and other items will be paid for with this item. Disposal of unsuitable material is incidental to this item.

When any vehicle delivers to the project bedding, classified fill, backfill, or surfacing material of any kind, or any other material measured by weight, the driver of the vehicle shall give to the inspector a legible "original" computer-generated or machine-printed weight ticket with the following information:

1. Vehicle identification number.
2. License number & associated trailer license number(s).
3. Tare weight of the vehicle(s).
4. Gross weight of the loaded vehicle(s) as registered on the scale.
5. Maximum allowable vehicle weight (MAVW) or legal gross weight of the vehicle(s) as permitted by AMC 9.46.090 or AMC 9.46.100.
6. Sequential ticket number, date, time of weight, pay item in words, and project location.
7. Bid Schedule and Number of Item
8. Pit location and name of scale operator.

The Owner will not pay for that portion of the load in excess of the legal gross weight. Vehicle(s) shall be tared a minimum of once daily by the scale operator. The Engineer may request additional tares to be done at any time the scale is operational. The Engineer may also require that he be present when tares are done. The accuracy of all scales is the responsibility of the Contractor. The Contractor shall maintain scales according to the specifications, tolerances and regulations for commercial weighing and measuring devices contained in the National Bureau of Standards, Handbook 44, as adopted by AS 45.75.050(d).

- B. Basis of Payment: Payment for this work shall be in accordance with the General Conditions and shall include full payment for all work described. Payment will be made under the following Units:

**SEWAGE LIFT STATION #3 FORCE MAIN REPLACEMENT -
DELTA WAY STORM DRAIN**

**DIVISION 1
GENERAL
Section 01025
MEASUREMENT AND PAYMENT**

<u>ITEM No.</u>	<u>DESCRIPTION</u>	<u>UNIT</u>
1(FM & SD)	Bedding and Surfacing Material	ton

3.3 Backfill Material

- A. Measurement: Measurement for Backfill Material shall be per ton of imported backfill material placed in the trench and compacted as detailed in the typical trench section. Imported backfill will only be required when the excavated materials are unsuitable for backfill as determined by the Engineer. Backfill material installed with the sewer pipe trench, valve vault, manholes, hydrant relocation and other items will be paid for with this item. Disposal of unsuitable material is incidental to this item.

Requirements for measuring the imported material weight and scale tickets are the same as those outlined above for Bedding and Surfacing Material.

- B. Basis of Payment: Payment for this work shall be in accordance with the General Conditions and shall include full payment for all work described. Payment will be made under the following Units:

<u>ITEM No.</u>	<u>DESCRIPTION</u>	<u>UNIT</u>
2 (FM)	Backfill Material	ton

3.4 Furnish and Install Sewer Pipe

- A. Measurement: Measurement for Furnish and Install Sanitary Sewer Pipe shall be based on the horizontal distances along the centerline of the pipe to center of manholes and bends, from the valve vault to the discharge connection. Measurement will start at the outside face of the existing wetwell and continue through the valve vault.

The unit price bid for Furnish and Install pipe shall include all labor, equipment and materials to install a functional piping system, including but not limited to the following items: trench excavation and backfill; excavation dewatering; trench support system; compaction; installation of pipe, fittings, adapters, joint restraint and other necessary appurtenances; locator ribbon; locator targets; polyethylene encasement; surveying; testing; protecting, bracing and/or shoring of existing utilities; restoration of existing drainage patterns; removal and replacement of existing culverts, fences, landscaping, and other public or private improvements or natural features affected by the work; preparation of as-built drawings; finish grading; and cleanup.

In the event oil contaminated materials are encountered during excavation, the Special Procedure specification requirements apply and payment will be made under that section.

- B. Basis of Payment: Payment for this work shall be in accordance with the General Conditions and shall include full payment for all work described. Payment will be made under the following Units:

<u>ITEM No.</u>	<u>DESCRIPTION</u>	<u>UNIT</u>
3 (FM)	Furnish and Install 6" Ductile Iron Sewer Pipe, Class 52	linear foot
2 (SD)	Furnish and Install 24" Ductile Iron Sewer Pipe, Class 52	linear foot

**SEWAGE LIFT STATION #3 FORCE MAIN REPLACEMENT -
DELTA WAY STORM DRAIN**

**DIVISION 1
GENERAL
Section 01025
MEASUREMENT AND PAYMENT**

3.5 Construct Valve Vault

- A. Measurement: No measurement will be made. Payment for Construct Valve Vault will be made on a lump sum basis.

The lump sum price for Construct Valve Vault shall include all labor, equipment and materials to install a complete functional system, including but not limited to the following items: excavation and backfill; excavation dewatering; excavation support system; demolition of existing piping and valves; installation of pipe sections where valves are removed in the existing wet well; installation of a concrete valve vault with ladder, drains and access hatch; installation of pipe, valves, fittings, adapters, joint restraint and other necessary appurtenances; drywell; compaction; surveying; testing; protecting, bracing and/or shoring of existing utilities; restoration of existing drainage patterns; removal and replacement of existing culverts, guardrails, fences, landscaping, and other public or private improvements or natural features affected by the work; finish grading; and cleanup. Imported earthen materials will be paid for separately. Temporary piping and diversion of the existing sewage flows will be considered incidental to this work.

In the event oil contaminated materials are encountered during excavation, the Special Procedure specification requirements apply and payment will be made under that section.

- B. Basis of Payment: Payment for this work shall be in accordance with the General Conditions and shall include full payment for all work described. Payment will be made under the following Units:

<u>ITEM No.</u>	<u>DESCRIPTION</u>	<u>UNIT</u>
4 (FM)	Construct Valve Vault	lump sum

3.6 Raise Sanitary Sewer Manhole

- A. Measurement: Measurement will be per each for raising sanitary sewer manholes as shown on the plans.

The unit price for Raise Sanitary Sewer Manhole includes equipment and materials to adjust the manholes, including but not limited to the following items: exposure and evaluation of as-built conditions and required manhole components; excavation and backfill; excavation dewatering; excavation support system; protecting, bracing and/or shoring of existing utilities; removal of existing manhole components including frames, lids, flow inserts, adjustment rings, cones or reducing slabs; installation of new barrel section(s); reinstallation of cone or reducing slab, adjustment rings, frame and lid and flow insert; compaction; and restoration of existing road section. Measurement also includes waterproofing measures and joint sealing as detailed on the drawings.

- B. Basis of Payment: Payment for this work shall be in accordance with the General Conditions and shall include full payment for all work described. Payment will be made under the following Units:

<u>ITEM No.</u>	<u>DESCRIPTION</u>	<u>UNIT</u>
5 (FM)	Raise Sanitary Sewer Manhole	each

3.7 Relocate Hydrant and Bollards

- A. Measurement: No measurement of quantities will be made. Imported backfill will be paid for separately.

Relocation of the hydrant and bollards may or may not be required depending on the exposed dimensions once everything is uncovered. Removal and replacement of the bollards will be considered incidental to other work if the hydrant is not relocated. Relocation will not be required if shoring maintains the existing installation. If hydrant relocation is required, the completed product shall comply with the City of Unalaska standard specifications for new hydrants. The Engineer will designate a new location for the hydrant in the event it needs to be relocated.

- B. Basis of Payment: Payment for this work shall be in accordance with the General Conditions and shall include full payment for all work described. Payment will be made under the following Units:

<u>ITEM No.</u>	<u>DESCRIPTION</u>	<u>UNIT</u>
6 (FM)	Relocate Hydrant and Bollards	lump sum

3.8 Stormwater Pollution Prevention Plan

- A. Measurement: No measurement of quantities will be made. This item includes all work associated with Specification 02370 Erosion, Sediment and Pollution Control.

- B. Basis of Payment: Payment for this work shall be in accordance with the General Conditions and shall include full payment for all work described. Payment will be made under the following Units:

<u>ITEM No.</u>	<u>DESCRIPTION</u>	<u>UNIT</u>
7 (FM), 11 (SD)	Stormwater Pollution Prevention Plan	lump sum

3.9 Site Mobilization and Demobilization

- A. Measurement: No measurement of quantities will be made. Mobilization and Demobilization includes costs of transporting, mobilizing, and demobilizing all materials, construction equipment, and personnel necessary to complete this project, bonds, and insurance. No measurement of quantities will be made. The measurement will be split so that 50% of the payment is made with mobilization and 50% is made with Demobilization. Demobilization will be paid for after the project is complete and the site is cleaned up and fully restored.

- B. Basis of Payment: Payment for this work shall be in accordance with the General Conditions and shall include full payment for all work described. Payment will be made under the following Units:

<u>ITEM No.</u>	<u>DESCRIPTION</u>	<u>UNIT</u>
8 (FM), 12 (SD)	Site Mobilization and Demobilization	lump sum

3.10 Traffic Maintenance

- A. Measurement: No measurement of quantities will be made. Traffic Maintenance includes all signage, flaggers, candles, cones, barricades and other work to perform traffic control in accordance with the

**SEWAGE LIFT STATION #3 FORCE MAIN REPLACEMENT -
DELTA WAY STORM DRAIN**

**DIVISION 1
GENERAL
Section 01025
MEASUREMENT AND PAYMENT**

2011 Alaska Traffic Manual (ATM) and Alaska Traffic Manual Supplement (Supplement) effective January 13, 2012. The 2011 Supplement modifies the 2009 Edition of the federal Manual on Uniform Traffic Control Devices (MUTCD).

The ATM is comprised of the Supplement and the federal MUTCD. Signs, pavement markings, traffic signals, and other traffic control devices on public roads in Alaska are required to conform to the ATM (AS 28.01.010(d)). Both documents are necessary to correctly apply traffic control devices in conformance with Alaska statute.

The 2011 Supplement is available at: <http://www.dot.state.ak.us/stwddes/dcstraffic/atmintro.shtml>.
The 2009 federal MUTCD is available at: http://mutcd.fhwa.dot.gov/kno_2009.htm.

- B. Basis of Payment: Payment for this work shall be in accordance with the General Conditions and shall include full payment for all work described. Payment will be made under the following Units:

<u>ITEM No.</u>	<u>DESCRIPTION</u>	<u>UNIT</u>
9 (FM), 13 (SD)	Traffic Maintenance	lump sum

3.11 Furnish and Install Storm Drain Manhole

- A. Measurement: Measurement will be per each. Measurement includes demolition and disposal of existing manhole(s), excavation and backfill,
- B. Basis of Payment: Payment for this work shall be in accordance with the General Conditions and shall include full payment for all work described. Payment will be made under the following Units:

<u>ITEM No.</u>	<u>DESCRIPTION</u>	<u>UNIT</u>
3 (SD)	Furnish and Install Storm Drain Manhole, Type I	each
4 (SD)	Furnish and Install Storm Drain Manhole, Type II	each

3.12 Connect to Existing Storm Drain Lines

- A. Measurement: Measurement shall be per each and includes all work necessary to grout the pipes in place for a watertight connection.
- B. Basis of Payment: Payment for this work shall be in accordance with the General Conditions and shall include full payment for all work described. Payment will be made under the following Units:

<u>ITEM No.</u>	<u>DESCRIPTION</u>	<u>UNIT</u>
5 (SD)	Connect to Existing Storm Drain Lines	each

3.13 Relocate Waterline

- A. Measurement: Measurement shall be per each and includes all work to relocate the waterlines to get adequate clearances from the new storm sewer pipe.
- B. Basis of Payment: Payment for this work shall be in accordance with the General Conditions and shall include full payment for all work described. Payment will be made under the following Units:

**SEWAGE LIFT STATION #3 FORCE MAIN REPLACEMENT -
DELTA WAY STORM DRAIN**

**DIVISION 1
GENERAL
Section 01025
MEASUREMENT AND PAYMENT**

<u>ITEM No.</u>	<u>DESCRIPTION</u>	<u>UNIT</u>
6 (SD)	Relocate Waterline, 6" Diameter	each
7 (SD)	Relocate Waterline, 12" Diameter	each

3.14 Install Electrical Conduits

- A. Measurement: Measurement will be per linear foot for all conduits (not each conduit), and includes glued joints, capping the ends, installation of targets on the buried ends and installation of locator ribbon.
- B. Basis of Payment: Payment for this work shall be in accordance with the General Conditions and shall include full payment for all work described. Payment will be made under the following Units:

<u>ITEM No.</u>	<u>DESCRIPTION</u>	<u>UNIT</u>
8 (SD)	Install (2) 6" & (1) 2" Schedule 40 PVC Electrical Conduits	linear foot

3.15 Construct Contaminated Material Containment Cell

- A. Measurement: No measurement of quantities will be made. This item includes surface preparation, construction of the berms, spreading City supplied fabric and liner, and covering the liner and stockpiled materials as detailed. This item also includes covering the cell, managing water, and covering with top liner as detailed in the design. Stockpiling, material management, handling, survey, sampling, and other requirements outlined in Specification 03500 item 3.7 are included with this item. Payment for imported earthen materials will be made separately. No payment will be made in the event there are no surplus contaminated materials to be disposed of.
- B. Basis of Payment: Payment for this work shall be in accordance with the General Conditions and shall include full payment for all work described. Payment will be made under the following Units:

<u>ITEM No.</u>	<u>DESCRIPTION</u>	<u>UNIT</u>
9 (SD)	Construct Contaminated Material Containment Cell	lump sum

3.16 Special Procedures

- A. Measurement: Measurement for this item includes all Work required by specification section 03500 Special Provisions, except for Work associated with the contaminated material storage cell.
- B. Basis of Payment: Payment for this work shall be in accordance with the General Conditions and shall include full payment for all work described. Payment will be made under the following Units:

<u>ITEM No.</u>	<u>DESCRIPTION</u>	<u>UNIT</u>
10 (SD)	Special Procedures (Specification 03500)	lump sum

3.17 Wet Well Piping Replacement

- A. Measurement: No measurement of quantities will be made. Payment for this item includes all Work required to replace the existing 4" diameter pump discharge piping in the existing wetwell, remove the existing piping, install the anode system, patch holes in the wetwell wall and perform other work for a complete workable system.

**SEWAGE LIFT STATION #3 FORCE MAIN REPLACEMENT -
DELTA WAY STORM DRAIN**

DIVISION 1
GENERAL
Section 01025
MEASUREMENT AND PAYMENT

- B. Basis of Payment: Payment for this work shall be in accordance with the General Conditions and shall include full payment for all work described. Payment will be made under the following Units:

<u>ITEM No.</u>	<u>DESCRIPTION</u>	<u>UNIT</u>
10 (FM)	Replace Wet Well Pump Discharge Piping	lump sum

END OF SECTION

MEASUREMENT AND PAYMENT
01025-8

PART 1 - GENERAL

1.1 RELATED DOCUMENTS

- A. Drawings and general provisions of the Contract, including General and Supplementary Conditions apply to this Section.

1.2 SUMMARY

- A. This Section includes sanitary and storm sewerage system piping, manholes and appurtenances.

1.3 RELATED SECTIONS

- A. The following Sections contain requirements that relate to this Section:
 - 1. Plan Sheets
 - 2. Section 02200 Earthwork for excavation and backfill required for sewerage piping and appurtenances.

1.4 SUBMITTALS

- A. General: Submit the following in accordance with Conditions of Contract and Division 1 Specification Sections.
 - 1. Product data for sewer piping and specialties.
 - 2. Shop drawings for precast concrete manholes, including frames, covers, and concrete reducing slabs.
 - 3. As-built drawings of the completed sewer system showing exact location (with swing ties) of all piping, bends, manholes, utility crossings, and other obstructions encountered during the work. Provide swing ties to a minimum of two permanent locations.

1.5 QUALITY ASSURANCE

- A. Environmental Compliance: Comply with applicable portions of Alaska Department of Environmental Conservation regulations pertaining to sewerage systems.
- B. Utility Compliance: Comply with local utility regulations and standards pertaining to sewerage systems.

1.6 DELIVERY, STORAGE, AND HANDLING

- A. Delivery and Storage: Inspect materials for damage. Unload and store with minimum handling. Store materials on site in enclosures or under protective covering. Store jointing materials and rubber gaskets under cover out of direct sunlight. Do not store materials directly on the ground. Keep inside of pipes and fittings free of dirt and debris.
- B. Handling: Handle pipe, fittings, and other accessories in a manner to ensure delivery to the trench in sound undamaged condition. Take special care to avoid injury to coatings and linings on pipe and fittings; make repairs if coatings or linings are damaged. Carry, do not drag the pipe to the trench.

1.7 PROJECT CONDITIONS

- A. Site Information: Perform site survey, research public utility records, and verify existing utility locations.
- B. Obtain utility locates in all areas influenced by construction.

1.8 SEQUENCING AND SCHEDULING

- A. Coordinate shutdown of existing pump station with utility company. Any shut-downs shall be scheduled for periods of low flow.
- B. Coordinate with other utility work.

PART 2 - PRODUCTS

2.1 PIPING MATERIALS (Storm and Sanitary Sewerage)

- A. PIPE: Asphalt coated Class 52 ductile iron pipe manufactured in accordance with ANSI/AWWA C151/A21.5 for push-on joint pipe, ANSI/AWWA C111/A21.11 for mechanical joint pipe or ANSI/AWWA C110/A21.10 for flanged pipe. Pipe shall be cement mortar lined in accordance with AWWA C- 104.
- B. Rubber gasket joints for Sanitary Sewerage: Conform to AWWA C- 111.
- C. Rubber gaskets for Storm Sewerage: NBR Nitrile Rubber Gaskets to resist petroleum based fluids meeting ANSI/AWWA C111, ASTM C1619.
- D. Polyethylene encasement shall be in accordance with AWWA C-105.
- E. Pipe Tyton Joint" pipe or approved equal shall be used for all sewer pipe. Mechanical joint pipe shall be used for the restrained joint portion of the pressure sewer line. See the drawings for valve vault/wet well piping and fitting requirements.
- F. Interior Fittings: Provide cement lined and seal coated flanged ductile iron fittings conforming to AWWA C-110 or AWWA C104.
- F. Exterior Restrained Joint Pipe and Fittings: Asphalt coated, cement lined Mechanical Joint, ductile iron conforming to AWWA C-110 or AWWA C-153. Mechanical joint fittings shall have "Megalug" retainer glands by EBBA iron or approved equal. Bolts for mechanical joint fittings shall be ductile iron "Ebaalloy" or equal. Field Loc gaskets can be used on straight runs of pipe.
- G. Joint restraint shall be required on pressure sewer piping either side of a fitting not be less than 60-feet from any fittings or bends.

2.2 PRECAST MANHOLES (Storm and Sanitary Sewerage)

- A. Material used for the construction of manholes shall conform to ASTM C-478.
- B. Cement for mortar used in the construction of manholes shall conform to the requirements of ASTM C-150, Type II. Sand shall conform to AASHTO M-45. The mortar shall be composed of one part cement and three parts sand.
- C. Each precast concrete barrel and cone section shall be set upon and sealed with a pre-molded plastic gasket that meets the requirements of ASTM C-990.
- D. Concrete reducing slabs shall be constructed with reinforcement as detailed.
- E. Provide a waterproof bitumastic coating on the exterior surface of all manholes and vaults.
- F. Provide "Mac-Wrap" at all manhole joints.

2.3 MANHOLE ADJUSTMENT (Sanitary Sewerage)

- A. All materials used in the adjustment of manholes including mortar, steps, barrel sections, premolded plastic gaskets, etc., shall conform to the requirements for manholes as outlined in this section.

2.4 IDENTIFICATION

- A. Plastic Underground Warning Tapes: Polyethylene plastic tape, 6 inches wide by 4 mils thick, solid green in color with continuously printed caption in black letters "CAUTION - SEWER LINE BURIED BELOW."

PART 3 - EXECUTION

3.1 PREPARATION OF BURIED PIPE FOUNDATION

- A. Excavation and backfill for furnishing and installing sewer line shall be in accordance with the specifications for Earthwork.
 - 1. Grade trench bottom to provide a smooth, firm, stable foundation throughout the length of the piping.
 - 2. Backfill trench bottoms with bedding material to dimensions shown on the drawings.
 - 3. Compact bedding material prior to installation of pipe.
 - 4. At no time shall the next layer of bedding material exceed the spring line of the pipe.
- B. Shape bedding material to fit bottom of pipe. Dig bell holes at each pipe joint to relieve the bells of all loads and to ensure continuous bearing of the pipe barrel on the foundation.

3.2 PIPING INSTALLATION

- A. General Locations and Arrangements: Drawings (plans and details) indicate the location and arrangement of the underground sewerage system piping.
- B. All piping shall be bedded and backfilled as required by the specification for Earthwork.
- C. Install piping true to grades and alignment indicated with unbroken continuity of invert. Place bell ends of piping facing direction of flows from pump station. All sanitary sewer pipe shall be laid with grades sloping continuously upward towards the discharge connection. Storm sewer pipe shall be installed at the slopes shown within a tolerance of 0.02' per 20' pipe joint.
- D. Install gaskets, seals, sleeves, and couplings in accordance with manufacturer's recommendations. Maintain swab or drag in line and pull past each joint as it is completed.
- E. Install polyethylene encasement in accordance with AWWA C 105.
- F. Provide survey for pipe installation.
- G. Where the project outfalls into an existing sewer, construction of physical connection to the existing line shall be delayed until all new underground construction, including pressure testing, is complete and accepted. Care shall be exercised during construction, flushing, and testing operations of the connecting link to assure that water is not diverted into any portion of a sewer line in service or a sewer line which is not a portion of the construction project for which the Contractor is responsible.
- H. Install continuous plastic underground warning tape during backfilling of trench for underground sewer piping. Locate directly over pipe at dimension shown on the drawing.
- I. Provide restrained joint pipe and fittings on the pressure sewer where indicated.

SANITARY AND STORM SEWERAGE

3.3 MANHOLES

- A. Excavation and backfill for furnishing and installing manholes and the valve vault shall be in accordance with the specifications for Earthwork.
- B. The manhole frames and grates shall be brought to the grades shown on the drawings. Adjustments shall be made after surveyed ground elevations are available to assure the top of the manhole lid is 6" below the surface of surrounding grades. Manhole adjusting rings shall be set in and made secure by use of a plastic gasket pipe joint sealer. Storm drain grate elevations shall be as provided in the drawings and/or as required to drain surrounding surface water.
- C. Manholes shall be installed at the locations shown on the drawings, such that primary leads enter radially as detailed. The base section shall be set plumb on a prepared surface.
- D. Exterior surfaces of exposed portions of sanitary and storm manholes shall be painted with a bitumastic coating. All joints, including adjusting rings, shall be wrapped with "Mac-Wrap" as required by the drawings.
- E. The exterior of the new portions of sanitary and storm manhole(s) shall be wrapped with three layers of 8-mil thick polyethylene plastic.

3.4 ADJUST EXISTING MANHOLE TO FINISHED GRADE

- A. The Contractor shall remove the existing cone or reducing slab and add barrel sections to each sanitary sewer manhole requiring a cone adjustment. Each precast concrete barrel and cone section shall be set upon and sealed with a premolded plastic gasket which shall meet AASHTO M-198, ASTM C990, or Federal Specification SS-SS-210. Any damage to manholes resulting from construction under this Contract shall be repaired or the damaged portion replaced at the Contractor's expense. All inverts, benchwalls, and/or catch areas shall be left clean and free from any foreign materials. Work shall comply with the requirements for new manholes as described above.

3.5 FIELD QUALITY CONTROL

- A. Cleaning: Clean interior of piping and structures of dirt and other superfluous material as work progresses. Maintain swab or drag in piping and pull past each joint as it is completed.
- B. Place plugs in ends of uncompleted pipe at end of day or whenever work stops.
- C. Flush piping to remove collected debris.

3.6 TESTING

- A. General: The Contractor shall clean and flush all installed sanitary and storm sewer pipe prior to testing and final inspection. All newly installed piping shall be tested. All tests shall be witnessed by a representative of the Owner. The Contractor shall provide all necessary equipment, labor, materials, supplies, and assistance necessary to complete the tests. Remove all air from the lines prior to pressure tests. The Contractor shall furnish to the Owner an affidavit outlining the dates and times of the flushing and pressure tests with testing results. The names of witnesses as well as the Owner's representative shall be included with signatures on the certificate. Final payment will not be made until this information is provided.
- B. Pressure Sewer or Force Main Pipe Pressure Test: All sanitary sewer piping shall be hydrostatically tested. Vent air from all high parts of the system while filling. All hydrostatic testing shall be preformed through test copper. Test prior to connection to the existing sewer. Securely plug and brace the ends of the line. Pressure test at 150 psi for two hours. After the required test pressure has been reached, the pumping will be terminated. If the pressure remains constant for 30-minutes without

the aid of a pump, the line will not be subjected to any future hydrostatic tests. Leakage must be less than the calculated value

$$L = \frac{ND(P)^{0.5}}{7,400}$$

Where: L = allowable leakage in gallons per hour
N = summation of mechanical and push on joints in length of pipe being tested
D = diameter of pipe in inches.
P = test pressure in pounds per square inch

The duration of each leakage test shall be two (2) hours, and during the tests the main shall be subjected to the constant test pressure as defined above. The test pump shall be valved to ensure that constant test pressure is maintained throughout the test and all excess water returned to the supply tank.

If the pressure decreases below the required test pressure during the two (2) hour period, the proceeding portion of that test will be declared void. Cracked or defective pipe, gaskets, mechanical joints or fittings discovered as a consequence of the hydrostatic tests shall be removed and replaced with sound material at the Contractor's expense. The test shall then be repeated until the results are satisfactory. A report with dates, times, procedures, witnesses, and other relevant information documenting performance of the tests shall be provided to the Engineer.

C. Storm Sewer Pressure Test: Within one day after the pipe is determined to be clean, and the pipe is backfilled and compacted in place, the pipe shall be pressure tested for leakage.

1. The Contractor may desire to make an air test prior to backfilling for his own purpose. However, the acceptance air test shall be made after backfilling and compaction has been completed.
2. Safety braces shall be required to hold plugs in place and to prevent the sudden release of the compressed air. Due to the large forces that could be exerted by an escaping plug during the testing of the pipe, workmen will not be allowed in the manholes in which plugs have been placed while tests are being conducted. The Contractor's testing equipment shall be arranged in such a manner that a pressure relief device will prohibit the pressure in the pipeline from exceeding 10 psi.
3. Air shall be slowly supplied to the plugged pipe installation until the internal air pressure reaches 5 psi. The air pressure gage shall be incremented in minimum 1/2-pound increments.
4. Five minutes will be allowed for the air temperature in the pipe to stabilize. The pipe line shall be considered acceptable if the pressure does not drop more than the value in the table below in ten minutes.

Pipe Diameter (inches)	Allowable Pressure Drop in 10-Minutes (P.S.I.)
24	0.9

5. If the installation fails to meet test requirements, the Contractor shall determine at his own expense the source or sources of leakage, and he shall repair or replace the source of the leakage in a method approved by the Engineer.

END OF SECTION 02730



Laborers' & Mechanics' Minimum Rates of Pay

Effective April 1, 2014
Issue 28

**Title 36. Public Contracts
AS 36.05 & AS 36.10
Wage & Hour Administration
Pamphlet No. 600**



**ALASKA DEPARTMENT OF LABOR
& WORKFORCE DEVELOPMENT**



THE STATE
of **ALASKA**
GOVERNOR SEAN PARNELL

**Department of Labor and
Workforce Development**

Office of the Commissioner

Post Office Box 111149
Juneau, Alaska 99811
Main: 907.465.2700
fax: 907.465-2784

April 1, 2014

TO ALL CONTRACTING AGENCIES:

At the Alaska Department of Labor and Workforce Development, our goal is putting Alaskans to work. This pamphlet is designed to help contractors awarded public construction contracts understand the most significant laws of the State of Alaska pertaining to prevailing wage and resident hire requirements.

This pamphlet identifies current prevailing wage rates and resident hire classifications for public construction contracts (any construction projects awarded by the State of Alaska or its political subdivisions, such as local governments and certain non-profit organizations).

Because these rates may change, this publication is printed in the spring and fall of every year, so please be sure you are using the appropriate rates. The rates published in this edition become effective April 1, 2014.

All projects with a final bid date of April 11, 2014, or later, must pay the prevailing wage rates contained in this pamphlet. As the law now provides, these rates will remain stable during the life of a contract or for 24 calendar months, whichever is shorter. **The date the prime contract is awarded is the date from which the 24 months will be counted.** Upon expiration of the initial 24-month period, the latest wage rates issued by the department shall become effective for a subsequent 24-month period or until the original contract is completed, whichever occurs first. This process shall be repeated until the original contract is completed.

The term "original contract", as used herein, means the signed contract that resulted from the original bid and any amendments, including changes of work scope, additions, extensions, change orders, and other instruments agreed to by the parties that have not been subject to subsequent open bid procedures.

If a higher federal rate is required due to partial federal funding or other federal participation, the higher rate must be paid.

For additional copies of this pamphlet, contact the nearest office of the Division of Labor Standards and Safety, Wage and Hour office or visit the Internet site at:

<http://labor.state.ak.us/lss/pamp600.htm>

For questions regarding prevailing wage or resident hire requirements, please contact the nearest Wage and Hour office. These offices are listed on Page xi.

Sincerely,

A handwritten signature in cursive script that reads "Dianne Blumer".
Dianne Blumer
Commissioner

Table of Contents

Excerpts from Alaska Law

Sec. 36.05.005. Applicability.....	iii
Sec. 36.05.010. Wage rates on public construction.	iii
Sec. 36.05.040. Filing schedule of employees, wages paid and other information	iii
Sec. 36.05.045. Notice of work and completion; withholding of payment	iii
Sec. 36.05.060. Penalty for violation of this chapter	iv
Sec. 36.05.070. Wage rates in specifications and contracts for public works	iv
Sec. 36.05.080. Failure to pay agreed wages.....	iv
Sec. 36.05.090. Payment of wages from withheld payments and listing contractors who violate contracts	iv
Sec. 36.05.900. Definition.. ..	v

Additional Information

Laborer Classification Clarification.....	v
Accommodations and Per Diem	v
Apprentice Hiring Requirements	vi
Apprentice Rates.....	vi
Fringe Benefit Plans.....	vii
Special Prevailing Wage Rate Determination.....	vii
Request for Notice of Proposed Change of Labor Standards Regulations	viii
Alaska Hire Employment Preference.....	ix
Debarment List	xi

Wage Rates	Pages 1-23
-------------------------	-------------------

Note to Readers: The statutes and administrative regulations listed in this publication were taken from the official codes, as of the effective date of the publication. However, there may be errors or omissions that have not been identified and changes that occurred after the publication was printed. This publication is intended as an informational guide only and is not intended to serve as a precise statement of the statutes and regulations of the State of Alaska. To be certain of the current laws and regulations, please refer to the official codes.

EXCERPTS FROM ALASKA LAW

(The following statute (36.05.005) applies to projects bid on or after October 20, 2011)

Sec. 36.05.005. Applicability.

This chapter applies only to a public construction contract that exceeds \$25,000.

Sec. 36.05.010. Wage rates on public construction.

A contractor or subcontractor who performs work on a public construction contract in the state shall pay not less than the current prevailing rate of wages for work of a similar nature in the region in which the work is done. The current prevailing rate of wages is that contained in the latest determination of prevailing rate of wages issued by the Department of Labor and Workforce Development at least 10 days before the final date for submission of bids for the contract. The rate shall remain in effect for the life of the contract or for 24 calendar months, whichever is shorter. At the end of the initial 24-month period, if new wage determinations have been issued by the department, the latest wage determination shall become effective for the next 24-month period or until the contract is completed, whichever occurs first. This process shall be repeated until the contract is completed.

Sec. 36.05.040. Filing schedule of employees, wages paid, and other information.

All contractors or subcontractors who perform work on a public construction contract for the state or for a political subdivision of the state shall, before the Friday of every second week, file with the Department of Labor and Workforce Development a sworn affidavit for the previous reporting period, setting out in detail the number of persons employed, wages paid, job classification of each employee, hours worked each day and week, and other information on a form provided by the Department of Labor and Workforce Development.

Sec. 36.05.045. Notice of work and completion; withholding of payment.

- (a) Before commencing work on a public construction contract, the person entering into the contract with a contracting agency shall designate a primary contractor for purposes of this section. Before work commences, the primary contractor shall file a notice of work with the Department of Labor and Workforce Development. The notice of work must list work to be performed under the public construction contract by each contractor who will perform any portion of work on the contract and the contract price being paid to each contractor. The primary contractor shall pay all filing fees for each contractor performing work on the contract, including a filing fee based on the contract price being paid for work performed by the primary contractor's employees. The filing fee payable shall be the sum of all fees calculated for each contractor. The filing fee shall be one percent of each contractor's contract price. The total filing fee payable by the primary contractor under this subsection may not exceed \$5,000. In this subsection, "contractor" means an employer who is using employees to perform work on the public construction contract under the contract or a subcontract.
- (b) Upon completion of all work on the public construction contract, the primary contractor shall file with the Department of Labor and Workforce Development a notice of completion together with payment of any additional filing fees owed due to increased contract amounts. Within 30 days after the department's receipt of the primary contractor's notice of completion, the department shall inform the contracting agency of the amount, if any, to be withheld from the final payment.
- (c) A contracting agency
 - (1) may release final payment of a public construction contract to the extent that the agency has received verification from the Department of Labor and Workforce Development that
 - (A) the primary contractor has complied with (a) and (b) of this section;
 - (B) the Department of Labor and Workforce Development is not conducting an investigation under this title; and
 - (C) the Department of Labor and Workforce Development has not issued a notice of a violation of this chapter to the primary contractor or any other contractors working on the public construction contract; and

- (2) shall withhold from the final payment an amount sufficient to pay the department's estimate of what may be needed to compensate the employees of any contractors under investigation on this construction contract, and any unpaid filing fees.
- (d) The notice and filing fee required under (a) of this section may be filed after work has begun if
 - (1) The public construction contract is for work undertaken in immediate response to an emergency; and
 - (2) The notice and fees are filed not later than 14 days after the work has begun.
- (e) A false statement made on a notice required by this section is punishable under AS 11.56.210.

Sec. 36.05.060. Penalty for violation of this chapter.

A contractor who violates this chapter is guilty of a misdemeanor and upon conviction is punishable by a fine of not less than \$100 nor more than \$1,000, or by imprisonment for not less than 10 days nor more than 90 days, or by both. Each day a violation exists constitutes a separate offense.

Sec. 36.05.070. Wage rates in specifications and contracts for public works.

- (a) The advertised specifications for a public construction contract that requires or involves the employment of mechanics, laborers, or field surveyors must contain a provision stating the minimum wages to be paid various classes of laborers, mechanics, or field surveyors and that the rate of wages shall be adjusted to the wage rate under AS 36.05.010.
- (b) Repealed by §17 ch 142 SLA 1972.
- (c) A public construction contract under (a) of this section must contain provisions that
 - (1) the contractor or subcontractors of the contractor shall pay all employees unconditionally and not less than once a week;
 - (2) wages may not be less than those stated in the advertised specifications, regardless of the contractual relationship between the contractor or subcontractors and laborers, mechanics, or field surveyors;
 - (3) the scale of wages to be paid shall be posted by the contractor in a prominent and easily accessible place at the site of the work;
 - (4) the state or a political subdivision shall withhold so much of the accrued payments as is necessary to pay to laborers, mechanics, or field surveyors employed by the contractor or subcontractors the difference between
 - (A) the rates of wages required by the contract to be paid laborers, mechanics, or field surveyors on the work; and
 - (B) the rates of wages in fact received by laborers, mechanics, or field surveyors.

Sec. 36.05.080. Failure to pay agreed wages.

Every contract within the scope of AS 36.05.070 shall contain a provision that if it is found that a laborer, mechanic, or field surveyor employed by the contractor or subcontractor has been or is being paid a rate of wages less than the rate of wages required by the contract to be paid, the state or its political subdivision may, by written notice to the contractor, terminate the contractor's right to proceed with the work or the part of the work for which there is a failure to pay the required wages and to prosecute the work to completion by contract or otherwise, and the contractor and the contractor's sureties are liable to the state or its political subdivision for excess costs for completing the work.

Sec. 36.05.090. Payment of wages from withheld payments and listing contractors who violate contracts.

- (a) The state disbursing officer in the case of a state public construction contract and the local fiscal officer in the case of a political subdivision public construction contract shall pay directly to laborers, mechanics, or field surveyors from accrued payments withheld under the terms of the contract the wages due laborers, mechanics, or field surveyors under AS 36.05.070.
- (b) The state disbursing officer or the local fiscal officer shall distribute to all departments of the state government and to all political subdivisions of the state a list giving the names of persons who have disregarded their obligations to employees. A person appearing on this list and a firm, corporation,

partnership, or association in which the person has an interest may not work as a contractor or subcontractor on a public construction contract for the state or a political subdivision of the state until three years after the date of publication of the list. If the accrued payments withheld under the contract are insufficient to reimburse all the laborers, mechanics, or field surveyors with respect to whom there has been a failure to pay the wages required under AS 36.05.070, the laborers, mechanics, or field surveyors have the right of action or intervention or both against the contractor and the contractor's sureties conferred by law upon persons furnishing labor or materials, and in the proceedings it is not a defense that the laborers, mechanics, or field surveyors accepted or agreed to accept less than the required rate of wages or voluntarily made refunds.

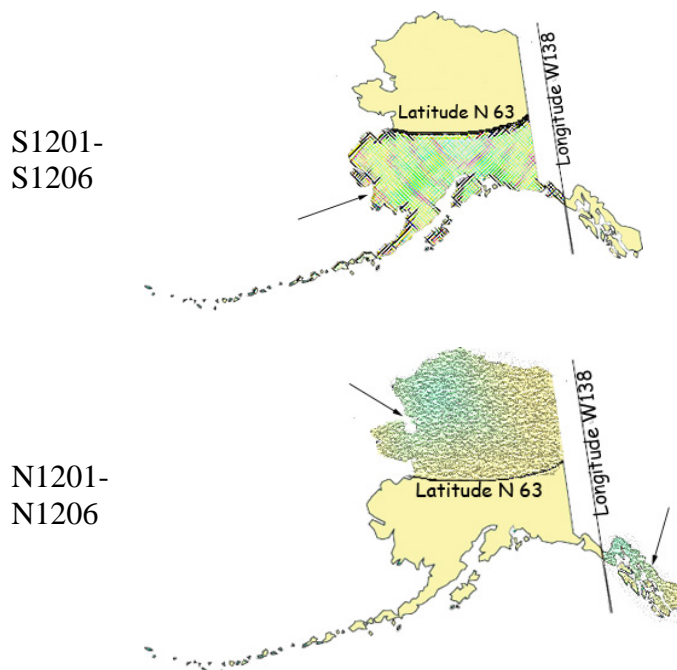
Sec. 36.05.900. Definition.

In this chapter, "contracting agency" means the state or a political subdivision of the state that has entered into a public construction contract with a contractor.

ADDITIONAL INFORMATION

LABORER CLASSIFICATION CLARIFICATION

The laborer rates categorized in class code S1201-S1206 apply in one area of Alaska; the area that is south of N63 latitude and west of W138 Longitude. The laborer rates categorized in class code N1201-N1206 apply in two areas of Alaska; the Alaska areas north of N63 latitude and east of W138 longitude. The following graphic representations should assist with clarifying the applicable wage rate categories:



ACCOMMODATIONS AND PER DIEM

The Alaska Department of Labor and Workforce Development has adopted a per diem requirement for blocklayers, bricklayers, carpenters, dredgemen, heat & frost insulators/asbestos workers, ironworkers, laborers, operative plasterers & cement masons, painters, piledrivers, power equipment operators, roofers, surveyors, truck

drivers/surveyors, and tunnel workers. This per diem rate creates an allowable alternative to providing board and lodging under the following conditions:

Employer-Provided Camp or Suitable Accommodations

Unless otherwise approved by the Commissioner, the employer shall ensure that a worker who is employed on a project that is 65 road miles or more from the international airport in either Fairbanks, Juneau or Anchorage or is inaccessible by road in a 2-wheel drive vehicle and who is not a domiciled resident of the locality of the project shall receive meals and lodging. Lodging shall be in accordance with all applicable state and federal laws. In cases where the project site is not road accessible, but the employee can reasonably get to the project worksite from their permanent residence within one hour, the Commissioner may waive these requirements for that employee upon a written request from the employer.

The term “domiciled resident” means a person living within 65 road miles of the project, or in the case of a highway project, the mid-point of the project, for at least 12 consecutive months prior to the award of the project. However, if the employer or person provides sufficient evidence to convince the department that a person has established a permanent residence and an intent to remain indefinitely within the distance to be considered a “domiciled resident,” the employer shall not be required to provide meals and lodging or pay per diem.

Where the employer provides or furnishes board, lodging or any other facility, the cost or amount thereof shall not be considered or included as part of the required prevailing wage basic hourly rate and cannot be applied to meet other fringe benefit requirements. The taxability of employer provided board and lodging shall be determined by the appropriate taxation enforcement authority.

Per Diem

Employers are encouraged to use commercial facilities and lodges; however, when such facilities are not available, per diem in lieu of meals and lodging must be paid at the basic rate of \$75.00 per day, or part thereof, the worker is employed on the project. Per diem shall not be allowed on highway projects west of Livengood on the Elliott Highway, at Mile 0 of the Dalton Highway to the North Slope of Alaska, north of Mile 20 on the Taylor Highway, east of Chicken, Alaska, on the Top of the World Highway and south of Tetlin Junction to the Alaska-Canada border.

The above-listed standards for room and board and per diem only apply to the crafts as identified in Pamphlet 600, *Laborers' and Mechanics' Minimum Rates of Pay*. Other crafts working on public construction projects shall be provided room and board at remote sites based on the department's existing policy guidelines. In the event that a contractor provides lodging facilities, but no meals, the department will accept payment of \$36 per day for meals to meet the per diem requirements.

APPRENTICE HIRING REQUIREMENTS

On July 24, 2005, Administrative Order No. 226 established a 15 percent goal for hiring apprentices in certain job categories on highway, airport, harbor, dam, tunnel, utility or dredging projects awarded by the Alaska Department of Transportation and Public Facilities that exceed \$2.5 million. This Order will apply to all projects in the referenced categories that are advertised after September 1, 2005. On these projects, the hours worked by apprentices will be compared to the hours worked by journeyman level workers to determine if the 15 percent goal has been met. This on-the-job training goal is critical to ensure that the Alaska work force is prepared for the future. For additional details, contact the nearest Wage and Hour office at the address listed on Page xi of this publication. Administrative Order No. 226 may be viewed in its entirety on the Internet at <http://www.gov.state.ak.us/admin-orders/226.html> or call any Wage and Hour office to receive a copy.

APPRENTICE RATES

Apprentice rates at less than the minimum prevailing rates may be paid to apprentices according to an apprentice program which has been registered and approved by the Commissioner of the Alaska Department of Labor and Workforce Development in writing or according to a bona fide apprenticeship program registered with the U.S. Department of Labor, Office of Apprenticeship. **Any employee listed on a payroll at an apprentice wage rate who is not registered as above shall be paid the journeyman prevailing minimum wage in that work classification.** Wage rates are based on prevailing crew makeup practices in Alaska and apply to work performed regardless of either the quality of the work performed by the employee or the titles or classifications which may be assigned to individual employees.

FRINGE BENEFIT PLANS

Contractors/subcontractors may compensate fringe benefits to their employees in any one of three methods. The fringe benefits may be paid into a union trust fund, into an approved benefit plan, or paid directly on the paycheck as gross wages.

Where fringe benefits are paid into approved plans, funds, or programs including union trust funds, the payments must be contributed at least monthly. If contractors submit their own payroll forms and are paying fringe benefits into approved plans, funds, or programs, the employer's certification must include, in addition to those requirements of 8 AAC 30.020(c), a statement that fringe benefit payments have been or will be paid at least monthly. Contractors who pay fringe benefits to a plan must ensure the plan is one approved by the Internal Revenue Service and that the plan meets the requirements of 8 AAC 30.025 (eff. 3/2/08) in order for payments to be credited toward the prevailing wage obligation.

SPECIAL PREVAILING WAGE RATE DETERMINATION

Special prevailing wage rate determinations may be requested for special projects or a special worker classification if the work to be performed does not conform to traditional public construction for which a prevailing wage rate has been established under 8 AAC 30.050(a) of this section. Requests for special wage rate determinations must be in writing and filed with the Commissioner at least 30 days before the award of the contract. An applicant for a special wage rate determination shall have the responsibility to support the necessity for the special rate. An application for a special wage rate determination filed under this section must contain:

- (1) a specification of the contract or project on which the special rates will apply and a description of the work to be performed;
- (2) a brief narrative explaining why special wage rates are necessary;
- (3) the job class or classes involved;
- (4) the special wage rates the applicant is requesting, including survey or other relevant wage data to support the requested rates;
- (5) the approximate number of employees who would be affected; and
- (6) any other information which might be helpful in determining if special wage rates are appropriate.

Requests made pursuant to the above should be addressed to:

Director
Alaska Department of Labor and Workforce Development
Labor Standards & Safety Division
Wage and Hour Administration
P.O. Box 111149
Juneau, AK 99811-1149

-or-

Email: anchorage.lss-wh@alaska.gov

LABOR STANDARDS REGULATIONS
NOTICE REQUEST

If you would like to receive *notices of proposed changes to regulations* for Wage and Hour or Mechanical Inspection, please indicate below the programs for which you are interested in receiving such notices, print your name and email or mailing address in the space provided, and send this page to:

Alaska Department of Labor and Workforce Development
Labor Standards & Safety Division
Wage and Hour Administration
1251 Muldoon Road, Suite 113
Anchorage, AK 99504-2098
Email: anchorage.lss-wh@alaska.gov

For *REGULATIONS* information relating to any of the following:

- ☐ Wage and Hour Title 23 Employment Practices
- ☐ Wage and Hour Title 36 Public Works
- ☐ Employment Agencies
- ☐ Child Labor
- ☐ Employment Preference (Local Hire)
- ☐ Plumbing Code
- ☐ Electrical Code
- ☐ Boiler/Pressure Vessel Construction Code
- ☐ Elevator Code
- ☐ Certificates of Fitness
- ☐ Recreational Devices

Request any of the following *PUBLICATIONS* by checking below:

- | | |
|--|---|
| <input type="checkbox"/> Wage and Hour Title 23 Employment Practices | <input type="checkbox"/> Public Construction Pamphlet |
| <input type="checkbox"/> Minimum Wage & Overtime Poster | <input type="checkbox"/> Public Construction Wage Rates |
| <input type="checkbox"/> Child Labor Poster | <input type="checkbox"/> Child Labor Pamphlet |

PLEASE NOTE: DUE TO INCREASED MAILING AND PRINTING COSTS, ONLY ONE OF EACH PUBLICATION REQUESTED WILL BE MAILED TO YOU. IF YOU WISH TO RECEIVE ADDITIONAL COPIES OR SUBSEQUENT PUBLICATIONS, PLEASE CONTACT OUR OFFICE AT (907) 269-4900.

Name: _____

Mailing Address: _____

Email Address: _____

EMPLOYMENT PREFERENCE INFORMATION
(EFFECTIVE August 16, 2013)

By authority of AS 36.10.150 and 8 AAC 30.064, the Commissioner of Labor and Workforce Development has determined the 15 boroughs and census areas listed below to be Zones of Underemployment. A Zone of Underemployment requires that Alaska residents who are eligible under AS 36.10.140 be given a minimum of 90 percent employment preference on public works contracts throughout the state in certain job classifications. This hiring preference applies on a project-by-project, craft-by-craft or occupational basis and must be met each workweek by each contractor/subcontractor.

For additional information about the Alaska resident hire requirements, contact the nearest Wage and Hour Office in Anchorage at (907) 269-4900, in Fairbanks at (907) 451-2886 or in Juneau at (907) 465-4248.

The following classifications qualify for a minimum of 90 percent Alaska resident hire preference:

Aleutians East Borough: Plumbers and Pipefitters

Aleutians West Borough: Painters

Bethel Census Area: Culinary Workers, Foremen and Supervisors, Mechanics, Painters, Surveyors, Tug Boat Workers

Denali Borough: Carpenters

Dillingham Census Area: Carpenters, Culinary Workers, Electricians, Equipment Operators, Foremen and Supervisors, Laborers, Mechanics, Truck Drivers, Tug Boat Workers

Hoonah-Angoon Census Area: Carpenters, Culinary Workers, Electricians, Equipment Operators, Foremen and Supervisors, Laborers, Mechanics, Painters, Truck Drivers

Nome Census Area: Carpenters, Culinary Workers, Electricians, Equipment Operators, Foremen and Supervisors, Laborers, Mechanics, Surveyors, Truck Drivers, Tug Boat Workers, Welders

Northwest Arctic Borough: Carpenters, Culinary Workers, Electricians, Equipment Operators, Foremen and Supervisors, Plumbers and Pipefitters, Surveyors, Truck Drivers, Tug Boat Workers, Welders

Petersburg Borough: Culinary Workers, Engineers and Architects, Foremen and Supervisors, Laborers

Prince of Wales-Hyder Census Area: Carpenters, Culinary Workers, Electricians, Equipment Operators, Foremen and Supervisors, Laborers, Mechanics, Surveyors, Truck Drivers, Welders

Skagway: None

Southeast Fairbanks Census Area: Carpenters, Culinary Workers, Equipment Operators, Laborers, Painters, Truck Drivers

Wade Hampton Census Area: Carpenters, Electricians, Engineers and Architects, Mechanics, Roofers

Yakutat: None

Yukon-Koyukuk Census Area: Culinary Workers, Electricians, Foremen and Supervisors, Painters, Plumbers and Pipefitters, Surveyors, Truck Drivers, Tug Boat Workers, Welders

This determination is effective August 16, 2013, and remains in effect until June 30, 2015.

The first person on a certified payroll in any classification is called the "first worker" and is not required to be an Alaskan resident. However, once the contractor adds any more workers in the classification, then all workers in the classification are counted, and the 90 percent is applied to compute the number of required Alaskans to be in compliance. To compute the number of Alaskan residents required in a workweek in a particular classification, multiply the number of workers in the classification by 90 percent. The result is then rounded down to the nearest whole number to determine the number of Alaskans that must be employed.

If a worker works in more than one classification during a week, the classification in which they spent the most time would be counted for employment preference purposes. If the time is split evenly between two classifications, the worker is counted in both classifications.

If you have difficulty meeting the 90 percent requirement, an approved waiver must be obtained before a non-Alaskan resident is hired who would put the contractor/subcontractor out of compliance (8 AAC 30.081 (e) (f)). The waiver process requires proof of an intensive search for qualified Alaskan workers. To apply for a waiver, contact the nearest Wage and Hour Office for instructions.

Here is an example to apply the 90 percent requirement to four carpenter workers. Multiply four workers by 90% and drop the fraction ($.90 \times 4 = 3.6 - .6 = 3$). The remaining number is the number of Alaskan resident carpenters required to be in compliance in that particular classification for that week.

The penalties for being out of compliance are serious. AS 36.10.100 (a) states "A contractor who violates a provision of this chapter shall have deducted from amounts due to the contractor under the contract the prevailing wages which should have been paid to a displaced resident, and these amounts shall be retained by the contracting agency." If a contractor/subcontractor is found to be out of compliance, penalties accumulate until they come into compliance.

If you have difficulty determining whether a worker is an Alaska resident, you should contact the nearest Wage and Hour Office. Contact Wage and Hour in Anchorage at (907) 269-4900, in Fairbanks at (907) 451-2886, or in Juneau at (907) 465-4842.

Alaska Department of Labor and Workforce Development
Labor Standards & Safety Division
Wage and Hour Administration
Web site: <http://labor.state.ak.us/lss/pamp600.htm>

Anchorage

1251 Muldoon Road, Suite 113
Anchorage, Alaska 99504-2098
Phone: (907) 269-4900

Email:
anchorage.lss-wh@alaska.gov

Juneau

1111 W. 8th Street, Suite 302
Juneau, Alaska 99801
Phone: (907) 465-4842

Email:
juneau.lss-wh@alaska.gov

Fairbanks

Regional State Office Building
675 7th Ave., Station J-1
Fairbanks, Alaska 99701-4593
Phone: (907) 451-2886

Email:
fairbanks.lss@alaska.gov

DEBARMENT LIST

AS 36.05.090(b) states that “the state disbursing officer or the local fiscal officer shall distribute to all departments of the state government and to all political subdivisions of the state a list giving the names of persons who have disregarded their obligations to employees.”

A person appearing on the following debarment list and a firm, corporation, partnership, or association in which the person has an interest may not work as a contractor or subcontractor on a public construction contract for the state or a political subdivision of the state for three years from the date of debarment.

Company Name

Date of Debarment

Debarment Expires

No companies are currently debarred.

Laborers' & Mechanics' Minimum Rates of Pay

Class Code	Classification of Laborers & Mechanics	BHR	H&W	PEN	TRN	Other Benefits	THR
------------	--	-----	-----	-----	-----	----------------	-----

Boilermakers

A0101	Boilermaker (journeyman)	44.01	8.57	15.34	0.75	VAC 3.00 SAF 0.34	72.01
--------------	--------------------------	-------	------	-------	------	----------------------	-------

Bricklayers & Blocklayers

**See note on last page if remote site

A0201	Blocklayer	39.03	9.53	8.50	0.55	L&M 0.15	0.28	58.04
	Bricklayer							
	Marble or Stone Mason							
	Refractory Worker (Firebrick, Plastic, Castable, and Gunitite Refractory Applications)							
	Terrazzo Worker							
	Tile Setter							

A0202	Tuck Pointer Caulker	39.03	9.53	8.50	0.55	L&M 0.15	0.28	58.04
	Cleaner (PCC)							

A0203	Marble & Tile Finisher	33.27	9.53	8.50	0.55	L&M 0.15	0.28	52.28
	Terrazzo Finisher							

A0204	Torginal Applicator	37.14	9.53	8.50	0.55	L&M 0.15	0.28	56.15
--------------	---------------------	-------	------	------	------	----------	------	-------

Carpenters, Statewide

**See note on last page if remote site

					L&M	SAF		
A0301	Carpenter (journeyman)	36.59	9.78	12.11	0.70	0.10	0.15	59.43
	Lather/Drywall/Acoustical							

Cement Masons, Region I (North of N63 latitude)

**See note on last page if remote site

N0401	Group I, including:	35.69	7.24	11.80	0.85	L&M 0.10		55.68
	Application of Sealing Compound							
	Application of Underlayment							
	Building, General							
	Cement Mason (journeyman)							
	Concrete							
	Concrete Paving							
	Curb & Gutter, Sidewalk							
	Curing of All Concrete							
	Grouting & Caulking of Tilt-Up Panels							

Wage benefits key: BHR=basic hourly rate; H&W=health and welfare; IAF=industry advancement fund; LEG=legal fund; L&M=labor/management fund; LML=labor/management fund & LEG combined; ONT=overnight; PEN=pension fund; SAF=safety; SUI=supplemental unemployment insurance; S&L=SUI & LEG combined; TRN=training; THR=total hourly rate; VAC=vacation

Class Code	Classification of Laborers & Mechanics	BHR	H&W	PEN	TRN	Other Benefits	THR
Cement Masons, Region I (North of N63 latitude)							
**See note on last page if remote site							
						L&M	
N0401	Group I, including:	35.69	7.24	11.80	0.85	0.10	55.68
	Grouting of All Plates						
	Patching Concrete						
	Screed Pin Setter						
	Spackling/Skim Coating						
						L&M	
N0402	Group II, including:	35.69	7.24	11.80	0.85	0.10	55.68
	Form Setter						
						L&M	
N0403	Group III, including:	35.69	7.24	11.80	0.85	0.10	55.68
	Concrete Saw (self-powered)						
	Curb & Gutter Machine						
	Floor Grinder						
	Pneumatic Power Tools						
	Power Chipping & Bushing						
	Sand Blasting Architectural Finish						
	Screed & Rodding Machine Operator						
	Troweling Machine Operator						
						L&M	
N0404	Group IV, including:	35.69	7.24	11.80	0.85	0.10	55.68
	Application of All Composition Mastic						
	Application of All Epoxy Material						
	Application of All Plastic Material						
	Finish Colored Concrete						
	Guniting Nozzleman						
	Hand Powered Grinder						
	Tunnel Worker						
						L&M	
N0405	Group V, including:	35.94	7.24	11.80	0.85	0.10	55.93
	Plasterer						
Cement Masons, Region II (South of N63 latitude)							
**See note on last page if remote site							
						L&M	
S0401	Group I, including:	35.44	7.24	11.80	0.85	0.10	55.43
	Application of Sealing Compound						
	Application of Underlayment						
	Building, General						
	Cement Mason (journeyman)						
	Concrete						
	Concrete Paving						
	Curb & Gutter, Sidewalk						
	Curing of All Concrete						
Wage benefits key: BHR=basic hourly rate; H&W=health and welfare; IAF=industry advancement fund; LEG=legal fund; L&M=labor/management fund; LML=labor/management fund & LEG combined; ONT=overnight; PEN=pension fund; SAF=safety; SUI=supplemental unemployment insurance; S&L=SUI & LEG combined; TRN=training; THR=total hourly rate; VAC=vacation							

Class Code	Classification of Laborers & Mechanics	BHR	H&W	PEN	TRN	Other Benefits	THR
Cement Masons, Region II (South of N63 latitude)							
**See note on last page if remote site							
						L&M	
S0401	Group I, including:	35.44	7.24	11.80	0.85	0.10	55.43
	Grouting & Caulking of Tilt-Up Panels						
	Grouting of All Plates						
	Patching Concrete						
	Screed Pin Setter						
	Spackling/Skim Coating						
						L&M	
S0402	Group II, including:	35.44	7.24	11.80	0.85	0.10	55.43
	Form Setter						
						L&M	
S0403	Group III, including:	35.44	7.24	11.80	0.85	0.10	55.43
	Concrete Saw (self-powered)						
	Curb & Gutter Machine						
	Floor Grinder						
	Pneumatic Power Tools						
	Power Chipping & Bushing						
	Sand Blasting Architectural Finish						
	Screed & Rodding Machine Operator						
	Troweling Machine Operator						
						L&M	
S0404	Group IV, including:	35.44	7.24	11.80	0.85	0.10	55.43
	Application of All Composition Mastic						
	Application of All Epoxy Material						
	Application of All Plastic Material						
	Finish Colored Concrete						
	Guniting Nozzleman						
	Hand Powered Grinder						
	Tunnel Worker						
						L&M	
S0405	Group V, including:	35.69	7.24	11.80	0.85	0.10	55.68
	Plasterer						
Culinary Workers * See note on last page							
						LEG	
A0501	Baker/Cook	24.67	5.37	5.73		0.05	35.82
						LEG	
A0503	General Helper	21.62	5.37	5.73		0.05	32.77
	Housekeeper						
	Janitor						
	Kitchen Helper						
						LEG	
A0504	Head Cook	25.22	5.37	5.73		0.05	36.37
Wage benefits key: BHR=basic hourly rate; H&W=health and welfare; IAF=industry advancement fund; LEG=legal fund; L&M=labor/management fund; LML=labor/management fund & LEG combined; ONT=overnight; PEN=pension fund; SAF=safety; SUI=supplemental unemployment insurance; S&L=SUI & LEG combined; TRN=training; THR=total hourly rate; VAC=vacation							

Class Code	Classification of Laborers & Mechanics	BHR	H&W	PEN	TRN	Other	Benefits	THR
Culinary Workers * See note on last page								
							LEG	
A0505	Head Housekeeper	22.04	5.37	5.73			0.05	33.19
	Head Kitchen Help							
Dredgemen								
**See note on last page if remote site								
							L&M	
A0601	Assistant Engineer, including:	38.51	9.35	10.00	1.00		0.10	58.96
	Craneman							
	Electrical Generator Operator (primary pump/power barge/dredge)							
	Engineer							
	Welder							
							L&M	
A0602	Assistant Mate (deckhand)	37.35	9.35	10.00	1.00		0.10	57.80
							L&M	
A0603	Fireman	37.79	9.35	10.00	1.00		0.10	58.24
							L&M	
A0605	Leverman Clamshell	41.04	9.35	10.00	1.00		0.10	61.49
							L&M	
A0606	Leverman Hydraulic	39.28	9.35	10.00	1.00		0.10	59.73
							L&M	
A0607	Mate & Boatman	38.51	9.35	10.00	1.00		0.10	58.96
							L&M	
A0608	Oiler (dredge)	37.79	9.35	10.00	1.00		0.10	58.24
Electricians								
							L&M	LEG
A0701	Inside Cable Splicer	39.82	11.06	12.59	0.95		0.20	0.15 64.77
							L&M	LEG
A0702	Inside Journeyman Wireman, including:	38.79	11.06	12.81	0.95		0.20	0.15 63.96
	Technicians							
							LML	SAF
A0703	Power Cable Splicer	51.52	11.06	16.62	0.95		0.35	0.50 81.00
							L&M	LEG
A0704	Tele Com Cable Splicer	47.45	11.06	14.57	0.95		0.20	0.15 74.38
							LML	SAF
A0705	Power Journeyman Lineman, including:	49.77	11.06	16.56	0.95		0.35	0.50 79.19
	Power Equipment Operator							
	Technician							
							L&M	LEG
A0706	Tele Com Journeyman Lineman, including:	45.70	11.06	14.52	0.95		0.20	0.15 72.58
	Technician							
	Tele Com Equipment Operator							

Wage benefits key: BHR=basic hourly rate; H&W=health and welfare; IAF=industry advancement fund; LEG=legal fund; L&M=labor/management fund; LML=labor/management fund & LEG combined; ONT=overnight; PEN=pension fund; SAF=safety; SUI=supplemental unemployment insurance; S&L=SUI & LEG combined; TRN=training; THR=total hourly rate; VAC=vacation

Class Code	Classification of Laborers & Mechanics	BHR	H&W	PEN	TRN	Other Benefits	THR
Electricians							
						L&M	LEG
A0707	Straight Line Installer - Repairman	45.70	11.06	14.52	0.95	0.20	0.15 72.58
						LML	SAF
A0708	Powderman	47.77	11.06	16.50	0.95	0.35	0.50 77.13
						L&M	LEG
A0710	Material Handler	26.28	10.26	4.54	0.15	0.15	0.15 41.53
						L&M	LEG
A0712	Tree Trimmer Groundman	26.67	11.06	9.45	0.15	0.15	0.15 47.63
						L&M	LEG
A0713	Journeyman Tree Trimmer	35.34	11.06	9.71	0.15	0.15	0.15 56.56
						L&M	LEG
A0714	Vegetation Control Sprayer	38.79	11.06	9.81	0.15	0.15	0.15 60.11
						L&M	
A0715	Inside Journeyman Communications CO/PBX	38.07	11.06	12.54	0.95	0.20	0.15 62.97
Elevator Workers							
						L&M	VAC
A0802	Elevator Constructor	35.29	12.73	13.46	0.60	0.30	3.21 65.59
						L&M	VAC
A0803	Elevator Constructor Mechanic	50.42	12.73	13.46	0.60	0.30	5.59 83.10
Heat & Frost Insulators/Asbestos Workers							
**See note on last page if remote site							
						SAF	
A0902	Asbestos Abatement-Mechanical Systems	34.88	8.44	9.51	0.60	0.12	53.55
						SAF	
A0903	Asbestos Abatement/General Demolition All Systems	34.88	8.44	9.51	0.60	0.12	53.55
						SAF	
A0904	Insulator, Group II	34.88	8.44	9.51	0.60	0.12	53.55
						SAF	
A0905	Fire Stop	34.88	8.44	9.51	0.60	0.12	53.55
IronWorkers							
**See note on last page if remote site							
						L&M	IAF
A1101	Ironworkers, including:	33.55	7.58	17.00	0.95	0.43	0.10 59.61
	Bender Operators						
	Bridge & Structural						
	Machinery Mover						
	Ornamental						
	Reinforcing						
	Rigger						
	Sheeter						

Wage benefits key: BHR=basic hourly rate; H&W=health and welfare; IAF=industry advancement fund; LEG=legal fund; L&M=labor/management fund; LML=labor/management fund & LEG combined; ONT=overnight; PEN=pension fund; SAF=safety; SUI=supplemental unemployment insurance; S&L=SUI & LEG combined; TRN=training; THR=total hourly rate; VAC=vacation

Class Code	Classification of Laborers & Mechanics	BHR	H&W	PEN	TRN	Other	Benefits	THR
IronWorkers								
**See note on last page if remote site								
						L&M	IAF	
A1101	Ironworkers, including:	33.55	7.58	17.00	0.95	0.43	0.10	59.61
	Signalman							
	Stage Rigger							
	Toxic Haz-Mat Work							
	Welder							
						L&M	IAF	
A1102	Helicopter	34.55	7.58	17.00	0.95	0.43	0.10	60.61
	Tower (energy producing windmill type towers to include nacelle and blades)							
						L&M	IAF	
A1103	Fence/Barrier Installer	30.05	7.58	16.75	0.95	0.43	0.10	55.86
	Guard Rail Installer							
						L&M	IAF	
A1104	Guard Rail Layout Man	30.79	7.58	16.75	0.95	0.43	0.10	56.60
Laborers (The Alaska areas north of N63 latitude and east of W138 longitude)								
**See note on last page if remote site								
						L&M	LEG	
N1201	Group I, including:	29.25	7.24	13.73	1.20	0.20	0.15	51.77
	Asphalt Worker (shovelman, plant crew)							
	Brush Cutter							
	Camp Maintenance Laborer							
	Carpenter Tender or Helper							
	Choke Setter, Hook Tender, Rigger, Signalman							
	Concrete Labor (curb & gutter, chute handler, grouting, curing, screeding)							
	Crusher Plant Laborer							
	Demolition Laborer							
	Ditch Digger							
	Dumpman							
	Environmental Laborer (hazard/toxic waste, oil spill)							
	Fence Installer							
	Fire Watch Laborer							
	Flagman							
	Form Stripper							
	General Laborer							
	Guardrail Laborer, Bridge Rail Installer							
	Hydro-seeder Nozzleman							
	Laborer, Building							
	Landscaper or Planter							
	Laying of Mortarless Decorative Block (retaining walls, flowered decorative block 4 feet or less - highway or landscape work)							
	Material Handler							

Wage benefits key: BHR=basic hourly rate; H&W=health and welfare; IAF=industry advancement fund; LEG=legal fund; L&M=labor/management fund; LML=labor/management fund & LEG combined; ONT=overnight; PEN=pension fund; SAF=safety; SUI=supplemental unemployment insurance; S&L=SUI & LEG combined; TRN=training; THR=total hourly rate; VAC=vacation

Laborers (The Alaska areas north of N63 latitude and east of W138 longitude)

**See note on last page if remote site

						L&M	LEG	
N1201	Group I, including:	29.25	7.24	13.73	1.20	0.20	0.15	51.77
	Pneumatic or Power Tools							
	Portable or Chemical Toilet Serviceman							
	Pump Man or Mixer Man							
	Railroad Track Laborer							
	Sandblast, Pot Tender							
	Saw Tender							
	Slurry Work							
	Stake Hopper							
	Steam Cleaner Operator							
	Steam Point or Water Jet Operator							
	Tank Cleaning							
	Utiliwalk & Utilidor Laborer							
	Watchman (construction projects)							
	Window Cleaner							

						L&M	LEG	
N1202	Group II, including:	30.25	7.24	13.73	1.20	0.20	0.15	52.77
	Burning & Cutting Torch							
	Cement or Lime Dumper or Handler (sack or bulk)							
	Choker Splicer							
	Chucktender (wagon, air-track & hydraulic drills)							
	Concrete Laborer (power buggy, concrete saws, pumpcrete nozzleman, vibratorman)							
	Culvert Pipe Laborer							
	Cured Inplace Pipelayer							
	Environmental Laborer (asbestos, marine work)							
	Foam Gun or Foam Machine Operator							
	Green Cutter (dam work)							
	Guniting Operator							
	Hod Carrier							
	Jackhammer or Pavement Breaker (more than 45 pounds)							
	Laser Instrument Operator							
	Laying of Mortarless Decorative Block (retaining walls, flowered decorative block over 4 feet - highway or landscape work)							
	Mason Tender & Mud Mixer (sewer work)							
	Pilot Car							
	Pipelayer Helper							
	Plasterer, Bricklayer & Cement Finisher Tender							
	Powderman Helper							
	Power Saw Operator							
	Railroad Switch Layout Laborer							
	Sandblaster							
	Scaffold Building & Erecting							

Wage benefits key: BHR=basic hourly rate; H&W=health and welfare; IAF=industry advancement fund; LEG=legal fund; L&M=labor/management fund; LML=labor/management fund & LEG combined; ONT=overnight; PEN=pension fund; SAF=safety; SUI=supplemental unemployment insurance; S&L=SUI & LEG combined; TRN=training; THR=total hourly rate; VAC=vacation

Class Code	Classification of Laborers & Mechanics	BHR	H&W	PEN	TRN	Other	Benefits	THR
------------	--	-----	-----	-----	-----	-------	----------	-----

Laborers (The Alaska areas north of N63 latitude and east of W138 longitude)

**See note on last page if remote site

						L&M	LEG	
N1202	Group II, including:	30.25	7.24	13.73	1.20	0.20	0.15	52.77
	Sewer Caulker							
	Sewer Plant Maintenance Man							
	Thermal Plastic Applicator							
	Timber Faller, Chainsaw Operator, Filer							
	Timberman							

						L&M	LEG	
N1203	Group III, including:	31.15	7.24	13.73	1.20	0.20	0.15	53.67
	Bit Grinder							
	Camera/Tool/Video Operator							
	Guardrail Machine Operator							
	High Rigger & Tree Topper							
	High Scaler							
	Multiplate							
	Plastic Welding							
	Slurry Seal Squeegee Man							
	Traffic Control Supervisor							
	Welding Certified (in connection with laborer's work)							

						L&M	LEG	
N1204	Group IIIA	34.43	7.24	13.73	1.20	0.20	0.15	56.95
	Asphalt Raker, Asphalt Belly Dump Lay Down							
	Drill Doctor (in the field)							
	Driller (including, but not limited to, wagon drills, air-track drills, hydraulic drills)							
	Licensed Powderman							
	Pioneer Drilling & Drilling Off Tugger (all type drills)							
	Pipelayers							

						L&M	LEG	
N1205	Group IV	18.82	7.24	13.73	1.20	0.20	0.15	41.34
	Final Building Cleanup							
	Permanent Yard Worker							

						L&M	LEG	
N1206	Group IIIB	35.26	7.24	13.73	1.20	0.20	0.15	57.78
	Federally Licensed Powderman (Responsible Person in Charge)							
	Grade Checking (setting or transferring of grade marks, line and grade)							

Laborers (The area that is south of N63 latitude and west of W138 longitude)

**See note on last page if remote site

						L&M	LEG	
S1201	Group I, including:	29.25	7.24	13.73	1.20	0.20	0.15	51.77
	Asphalt Worker (shovelman, plant crew)							
	Brush Cutter							
	Camp Maintenance Laborer							

Wage benefits key: BHR=basic hourly rate; H&W=health and welfare; IAF=industry advancement fund; LEG=legal fund; L&M=labor/management fund; LML=labor/management fund & LEG combined; ONT=overnight; PEN=pension fund; SAF=safety; SUI=supplemental unemployment insurance; S&L=SUI & LEG combined; TRN=training; THR=total hourly rate; VAC=vacation

Laborers (The area that is south of N63 latitude and west of W138 longitude)

**See note on last page if remote site

						L&M	LEG	
S1201	Group I, including:	29.25	7.24	13.73	1.20	0.20	0.15	51.77
	Carpenter Tender or Helper							
	Choke Setter, Hook Tender, Rigger, Signalman							
	Concrete Labor (curb & gutter, chute handler, grouting, curing, screeding)							
	Crusher Plant Laborer							
	Demolition Laborer							
	Ditch Digger							
	Dumpman							
	Environmental Laborer (hazard/toxic waste, oil spill)							
	Fence Installer							
	Fire Watch Laborer							
	Flagman							
	Form Stripper							
	General Laborer							
	Guardrail Laborer, Bridge Rail Installer							
	Hydro-seeder Nozzleman							
	Laborer, Building							
	Landscape or Planter							
	Laying of Mortarless Decorative Block (retaining walls, flowered decorative block 4 feet or less - highway or landscape work)							
	Material Handler							
	Pneumatic or Power Tools							
	Portable or Chemical Toilet Serviceman							
	Pump Man or Mixer Man							
	Railroad Track Laborer							
	Sandblast, Pot Tender							
	Saw Tender							
	Slurry Work							
	Stake Hopper							
	Steam Cleaner Operator							
	Steam Point or Water Jet Operator							
	Tank Cleaning							
	Utiliwalk & Utilidor Laborer							
	Watchman (construction projects)							
	Window Cleaner							
S1202	Group II, including:	30.25	7.24	13.73	1.20	0.20	0.15	52.77
	Burning & Cutting Torch							
	Cement or Lime Dumper or Handler (sack or bulk)							
	Choker Splicer							
	Chucktender (wagon, air-track & hydraulic drills)							

Wage benefits key: BHR=basic hourly rate; H&W=health and welfare; IAF=industry advancement fund; LEG=legal fund; L&M=labor/management fund; LML=labor/management fund & LEG combined; ONT=overnight; PEN=pension fund; SAF=safety; SUI=supplemental unemployment insurance; S&L=SUI & LEG combined; TRN=training; THR=total hourly rate; VAC=vacation

Laborers (The area that is south of N63 latitude and west of W138 longitude)

**See note on last page if remote site

						L&M	LEG	
S1202	Group II, including:	30.25	7.24	13.73	1.20	0.20	0.15	52.77
	Concrete Laborer (power buggy, concrete saws, pumpcrete nozzleman, vibratorman)							
	Culvert Pipe Laborer							
	Cured Inplace Pipelayer							
	Environmental Laborer (asbestos, marine work)							
	Foam Gun or Foam Machine Operator							
	Green Cutter (dam work)							
	Guniting Operator							
	Hod Carrier							
	Jackhammer or Pavement Breaker (more than 45 pounds)							
	Laser Instrument Operator							
	Laying of Mortarless Decorative Block (retaining walls, flowered decorative block over 4 feet - highway or landscape work)							
	Mason Tender & Mud Mixer (sewer work)							
	Pilot Car							
	Pipelayer Helper							
	Plasterer, Bricklayer & Cement Finisher Tender							
	Powderman Helper							
	Power Saw Operator							
	Railroad Switch Layout Laborer							
	Sandblaster							
	Scaffold Building & Erecting							
	Sewer Caulker							
	Sewer Plant Maintenance Man							
	Thermal Plastic Applicator							
	Timber Faller, Chainsaw Operator, Filer							
	Timberman							

						L&M	LEG	
S1203	Group III, including:	31.15	7.24	13.73	1.20	0.20	0.15	53.67
	Bit Grinder							
	Camera/Tool/Video Operator							
	Guardrail Machine Operator							
	High Rigger & Tree Topper							
	High Scaler							
	Multiplate							
	Plastic Welding							
	Slurry Seal Squeegee Man							
	Traffic Control Supervisor							
	Welding Certified (in connection with laborer's work)							

						L&M	LEG	
S1204	Group IIIA	34.43	7.24	13.73	1.20	0.20	0.15	56.95
	Asphalt Raker, Asphalt Belly Dump Lay Down							

Wage benefits key: BHR=basic hourly rate; H&W=health and welfare; IAF=industry advancement fund; LEG=legal fund; L&M=labor/management fund; LML=labor/management fund & LEG combined; ONT=overnight; PEN=pension fund; SAF=safety; SUI=supplemental unemployment insurance; S&L=SUI & LEG combined; TRN=training; THR=total hourly rate; VAC=vacation

Class Code	Classification of Laborers & Mechanics	BHR	H&W	PEN	TRN	Other	Benefits	THR
------------	--	-----	-----	-----	-----	-------	----------	-----

Laborers (The area that is south of N63 latitude and west of W138 longitude)

**See note on last page if remote site

						L&M	LEG	
S1204	Group IIIA	34.43	7.24	13.73	1.20	0.20	0.15	56.95

Drill Doctor (in the field)
Driller (including, but not limited to, wagon drills, air-track drills, hydraulic drills)
Licensed Powderman
Pioneer Drilling & Drilling Off Tugger (all type drills)
Pipelayers

						L&M	LEG	
S1205	Group IV	18.82	7.24	13.73	1.20	0.20	0.15	41.34

Final Building Cleanup
Permanent Yard Worker

						L&M	LEG	
S1206	Group IIIB	35.26	7.24	13.73	1.20	0.20	0.15	57.78

Federally Licensed Powderman (Responsible Person in Charge)
Grade Checking (setting or transferring of grade marks, line and grade)

Millwrights

						L&M		
A1251	Millwright (journeyman)	34.99	9.78	9.76	1.00	0.25	0.15	55.93

						L&M		
A1252	Millwright Welder	35.58	9.78	9.76	1.00	0.25	0.15	56.52

Painters, Region I (North of N63 latitude)

**See note on last page if remote site

						L&M		
N1301	Group I, including:	31.10	7.55	11.10	0.83	0.07		50.65

Brush
General Painter
Hand Taping
Hazardous Material Handler
Lead-Based Paint Abatement
Roll

						L&M		
N1302	Group II, including:	31.62	7.55	11.10	0.83	0.07		51.17

Bridge Painter
Epoxy Applicator
General Drywall Finisher
Hand/Spray Texturing
Industrial Coatings Specialist
Machine/Automatic Taping
Pot Tender
Sandblasting

Wage benefits key: BHR=basic hourly rate; H&W=health and welfare; IAF=industry advancement fund; LEG=legal fund; L&M=labor/management fund; LML=labor/management fund & LEG combined; ONT=overnight; PEN=pension fund; SAF=safety; SUI=supplemental unemployment insurance; S&L=SUI & LEG combined; TRN=training; THR=total hourly rate; VAC=vacation

Class Code	Classification of Laborers & Mechanics	BHR	H&W	PEN	TRN	Other Benefits	THR
Painters, Region I (North of N63 latitude)							
**See note on last page if remote site							
						L&M	
N1302	Group II, including:	31.62	7.55	11.10	0.83	0.07	51.17
	Specialty Painter						
	Spray						
	Structural Steel Painter						
	Wallpaper/Vinyl Hanger						
N1304	Group IV, including:	36.51	7.55	10.96	0.80	0.05	55.87
	Glazier						
	Storefront/Automatic Door Mechanic						
N1305	Group V, including:	29.79	7.55	5.02	0.83	0.07	43.26
	Carpet Installer						
	Floor Coverer						
	Heat Weld/Cove Base						
	Linoleum/Soft Tile Installer						
Painters, Region II (South of N63 latitude)							
**See note on last page if remote site							
						L&M	
S1301	Group I, including :	29.34	7.55	10.85	0.83	0.07	48.64
	Brush						
	General Painter						
	Hand Taping						
	Hazardous Material Handler						
	Lead-Based Paint Abatement						
	Roll						
	Spray						
						L&M	
S1302	Group II, including :	30.59	7.55	10.85	0.83	0.07	49.89
	General Drywall Finisher						
	Hand/Spray Texturing						
	Machine/Automatic Taping						
	Wallpaper/Vinyl Hanger						
						L&M	
S1303	Group III, including :	30.69	7.55	10.85	0.83	0.07	49.99
	Bridge Painter						
	Epoxy Applicator						
	Industrial Coatings Specialist						
	Pot Tender						
	Sandblasting						
	Specialty Painter						
	Structural Steel Painter						

Wage benefits key: BHR=basic hourly rate; H&W=health and welfare; IAF=industry advancement fund; LEG=legal fund; L&M=labor/management fund; LML=labor/management fund & LEG combined; ONT=overnight; PEN=pension fund; SAF=safety; SUI=supplemental unemployment insurance; S&L=SUI & LEG combined; TRN=training; THR=total hourly rate; VAC=vacation

Class Code	Classification of Laborers & Mechanics	BHR	H&W	PEN	TRN	Other	Benefits	THR
Painters, Region II (South of N63 latitude)								
**See note on last page if remote site								
		L&M						
S1304	Group IV, including:	36.51	7.55	10.21	0.83	0.07		55.17
	Glazier							
	Storefront/Automatic Door Mechanic							
		L&M						
S1305	Group V, including:	29.79	7.55	5.02	0.83	0.07		43.26
	Carpet Installer							
	Floor Coverer							
	Heat Weld/Cove Base							
	Linoleum/Soft Tile Installer							
Piledrivers								
**See note on last page if remote site								
		L&M IAF						
A1401	Piledriver	36.59	9.78	12.11	0.70	0.10	0.15	59.43
	Assistant Dive Tender							
	Carpenter/Piledriver							
	Rigger							
	Sheet Stabber							
	Skiff Operator							
		L&M IAF						
A1402	Piledriver-Welder/Toxic Worker	37.59	9.78	12.11	0.70	0.10	0.15	60.43
		L&M IAF						
A1403	Remotely Operated Vehicle Pilot/Technician	40.90	9.78	12.11	0.70	0.10	0.15	63.74
	Single Atmosphere Suit, Bell or Submersible Pilot							
		L&M IAF						
A1404	Diver (working) ***See note on last page	80.70	9.78	12.11	0.70	0.10	0.15	103.54
		L&M IAF						
A1405	Diver (standby) ***See note on last page	40.90	9.78	12.11	0.70	0.10	0.15	63.74
		L&M IAF						
A1406	Dive Tender ***See note on last page	39.90	9.78	12.11	0.70	0.10	0.15	62.74
		L&M IAF						
A1407	Welder (American Welding Society, Certified Welding Inspector)	42.15	9.78	12.11	0.70	0.10	0.15	64.99
Plumbers, Region I (North of N63 latitude)								
		L&M S&L						
N1501	Journeyman Pipefitter	39.96	7.05	12.70	0.95	1.10		61.76
	Plumber							
	Welder							
Plumbers, Region II (South of N63 latitude)								

Wage benefits key: BHR=basic hourly rate; H&W=health and welfare; IAF=industry advancement fund; LEG=legal fund; L&M=labor/management fund; LML=labor/management fund & LEG combined; ONT=overnight; PEN=pension fund; SAF=safety; SUI=supplemental unemployment insurance; S&L=SUI & LEG combined; TRN=training; THR=total hourly rate; VAC=vacation

Class Code	Classification of Laborers & Mechanics	BHR	H&W	PEN	TRN	Other Benefits	THR
------------	--	-----	-----	-----	-----	----------------	-----

Plumbers, Region II (South of N63 latitude)

						L&M	
S1501	Journeyman Pipefitter	38.46	8.42	10.82	1.50	0.20	59.40
	Plumber						
	Welder						

Plumbers, Region IIA (1st Judicial District)

						L&M	
X1501	Journeyman Pipefitter	36.52	12.47	11.00	2.50	0.24	62.73
	Plumber						
	Welder						

Power Equipment Operators

**See note on last page if remote site

						L&M	
A1601	Group I, including:	39.28	9.35	10.00	1.00	0.10	59.73
	Asphalt Roller: Breakdown, Intermediate, and Finish						
	Back Filler						
	Barrier Machine (Zipper)						
	Beltcrete with Power Pack & similar conveyors						
	Bending Machine						
	Boat Coxswain						
	Bulldozer						
	Cableways, Highlines & Cablecars						
	Cleaning Machine						
	Coating Machine						
	Concrete Hydro Blaster						
	Cranes (45 tons & under or 150 feet of boom & under (including jib & attachments))						
	(a) Hydralifts or Transporters, (all track or truck type)						
	(b) Derricks						
	Crushers						
	Deck Winches, Double Drum						
	Ditching or Trenching Machine (16 inch or over)						
	Drag Scraper, Yarder, and similar types						
	Drilling Machines, Core, Cable, Rotary and Exploration						
	Finishing Machine Operator, Concrete Paving, Laser Screed, Sidewalk, Curb & Gutter Machine						
	Helicopters						
	Hover Craft, Flex Craft, Loadmaster, Air Cushion, All-Terrain Vehicle, Rollagon, Bargecable, Nodwell, & Snow Cat						
	Hydro Ax, Feller Buncher & similar						
	Licensed Line & Grade						
	Loaders (2 1/2 yards through 5 yards, including all attachments):						

Wage benefits key: BHR=basic hourly rate; H&W=health and welfare; IAF=industry advancement fund; LEG=legal fund; L&M=labor/management fund; LML=labor/management fund & LEG combined; ONT=overnight; PEN=pension fund; SAF=safety; SUI=supplemental unemployment insurance; S&L=SUI & LEG combined; TRN=training; THR=total hourly rate; VAC=vacation

Power Equipment Operators

**See note on last page if remote site

							L&M	
A1601	Group I, including:	39.28	9.35	10.00	1.00	0.10		59.73
	(a) Forklifts (with telescopic boom & swing attachment)							
	(b) Front End & Overhead, (2-1/2 yards through 5 yards)							
	(c) Loaders, (with forks or pipe clamp)							
	(d) Loaders, (elevating belt type, Euclid & similar types)							
	Mechanic, Welder, Bodyman, Electrical, Camp & Maintenance Engineer							
	Micro Tunneling Machine							
	Mixers: Mobile type with hoist combination							
	Motor Patrol Grader							
	Mucking Machine: Mole, Tunnel Drill, Horizontal/Directional Drill							
	Operator and/or Shield							
	Operator on Dredges							
	Piledriver Engineer, L.B. Foster, Puller or similar paving breaker							
	Plant Operator (Asphalt & Concrete)							
	Power Plant, Turbine Operator 200 k.w & over (power plants or combination of power units over 300 k.w.)							
	Remote Controlled Equipment							
	Scraper (through 40 yards)							
	Service Oiler/Service Engineer							
	Shot Blast Machine							
	Shovels, Backhoes, Excavators with all attachments, and Gradealls (3 yards & under)							
	Sideboom (under 45 tons)							
	Spreaders, Blaw Knox, Cedarapids, Barber Greene, Slurry Machine							
	Sub Grader (Gurries, Reclaimer & similar types)							
	Tack Tractor							
	Truck Mounted Concrete Pump, Conveyor & Creter							
	Unlicensed Off-Road Hauler							
	Wate Kote Machine							

							L&M	
A1602	Group IA, including:	41.04	9.35	10.00	1.00	0.10		61.49
	Camera/Tool/Video Operator (Slipline)							
	Certified Welder, Electrical Mechanic, Camp Maintenance Engineer, Mechanic (over 10,000 hours)							
	Cranes (over 45 tons or 150 feet including jib & attachments)							
	(a) Clamshells & Draglines (over 3 yards)							
	(b) Tower Cranes							
	Licensed Water/Waste Water Treatment Operator							
	Loaders (over 5 yards)							
	Motor Patrol Grader, Dozer, Grade Tractor, Roto-Mill/Profiler (finish: when finishing to final grade and/or to hubs, or for asphalt)							
	Power Plants (1000 k.w. & over)							
	Quad							

Wage benefits key: BHR=basic hourly rate; H&W=health and welfare; IAF=industry advancement fund; LEG=legal fund; L&M=labor/management fund; LML=labor/management fund & LEG combined; ONT=overnight; PEN=pension fund; SAF=safety; SUI=supplemental unemployment insurance; S&L=SUI & LEG combined; TRN=training; THR=total hourly rate; VAC=vacation

Class Code	Classification of Laborers & Mechanics	BHR	H&W	PEN	TRN	Other	Benefits	THR
------------	--	-----	-----	-----	-----	-------	----------	-----

Power Equipment Operators

**See note on last page if remote site

						L&M		
A1602	Group IA, including:	41.04	9.35	10.00	1.00	0.10		61.49
	Scrapers (over 40 yards)							
	Screed							
	Shovels, Backhoes, Excavators with all attachments (over 3 yards)							
	Sidebooms (over 45 tons)							
	Slip Form Paver, C.M.I. & similar types							
						L&M		
A1603	Group II, including:	38.51	9.35	10.00	1.00	0.10		58.96
	Boiler - Fireman							
	Cement Hogs & Concrete Pump Operator							
	Conveyors (except those listed in Group I)							
	Hoists on Steel Erection, Towermobiles & Air Tuggers							
	Horizontal/Directional Drill Locator							
	Licensed Grade Technician							
	Loaders (i.e., Elevating Grader & Material Transfer Vehicle)							
	Locomotives, Rod & Geared Engines							
	Mixers							
	Screening, Washing Plant							
	Sideboom (cradling rock drill, regardless of size)							
	Skidder							
	Trenching Machines (under 16 inches)							
	Water/Waste Water Treatment Operator							
						L&M		
A1604	Group III, including:	37.79	9.35	10.00	1.00	0.10		58.24
	"A" Frame Trucks, Deck Winches							
	Bombardier (tack or tow rig)							
	Boring Machine							
	Brooms, Power							
	Bump Cutter							
	Compressor							
	Farm Tractor							
	Forklift, Industrial Type							
	Gin Truck or Winch Truck (with poles when used for hoisting)							
	Grade Checker & Stake Hopper							
	Hoists, Air Tuggers, Elevators							
	Loaders:							
	(a) Elevating-Athey, Barber Greene & similar types							
	(b) Forklifts or Lumber Carrier (on construction job sites)							
	(c) Forklifts, (with tower)							
	(d) Overhead & Front End, (under 2-1/2 yards)							
	Locomotives: Dinkey (air, steam, gas & electric) Speeders							
	Mechanics, Light Duty							
	Oil, Blower Distribution							

Wage benefits key: BHR=basic hourly rate; H&W=health and welfare; IAF=industry advancement fund; LEG=legal fund; L&M=labor/management fund; LML=labor/management fund & LEG combined; ONT=overnight; PEN=pension fund; SAF=safety; SUI=supplemental unemployment insurance; S&L=SUI & LEG combined; TRN=training; THR=total hourly rate; VAC=vacation

Class Code	Classification of Laborers & Mechanics	BHR	H&W	PEN	TRN	Other	Benefits	THR
------------	--	-----	-----	-----	-----	-------	----------	-----

Power Equipment Operators

**See note on last page if remote site

						L&M	
A1604	Group III, including:	37.79	9.35	10.00	1.00	0.10	58.24
	Posthole Digger, Mechanical						
	Pot Fireman (power agitated)						
	Power Plant, Turbine Operator, (under 200 k.w.)						
	Pumps, Water						
	Roller (other than Asphalt)						
	Saws, Concrete						
	Skid Hustler						
	Skid Steer (with all attachments)						
	Straightening Machine						
	Tow Tractor						

						L&M	
A1605	Group IV, including:	31.58	9.35	10.00	1.00	0.10	52.03
	Crane Assistant Engineer/Rig Oiler						
	Drill Helper						
	Parts & Equipment Coordinator						
	Spotter						
	Steam Cleaner						
	Swamper (on trenching machines or shovel type equipment)						

Roofers

**See note on last page if remote site

						L&M	
A1701	Roofer & Waterproofer	41.45	7.43	2.91	0.81	0.10	52.72
						L&M	
A1702	Roofer Material Handler	29.02	7.43	2.91	0.81	0.10	40.29

Sheet Metal Workers, Region I (North of N63 latitude)

						L&M	
N1801	Sheet Metal Journeyman	44.93	8.30	10.34	1.32	0.25	65.14
	Air Balancing and duct cleaning of HVAC systems						
	Brazing, soldering or welding of metals						
	Demolition of sheet metal HVAC systems						
	Fabrication and installation of exterior wall sheathing, siding, metal roofing, flashing, decking and architectural sheet metal work						
	Fabrication and installation of heating, ventilation and air conditioning ducts and equipment						
	Fabrication and installation of louvers and hoods						
	Fabrication and installation of sheet metal lagging						
	Fabrication and installation of stainless steel commercial or industrial food service equipment						
	Manufacture, fabrication assembly, installation and alteration of all ferrous and nonferrous metal work						

Wage benefits key: BHR=basic hourly rate; H&W=health and welfare; IAF=industry advancement fund; LEG=legal fund; L&M=labor/management fund; LML=labor/management fund & LEG combined; ONT=overnight; PEN=pension fund; SAF=safety; SUI=supplemental unemployment insurance; S&L=SUI & LEG combined; TRN=training; THR=total hourly rate; VAC=vacation

Class Code	Classification of Laborers & Mechanics	BHR	H&W	PEN	TRN	Other Benefits	THR
------------	--	-----	-----	-----	-----	----------------	-----

Sheet Metal Workers, Region I (North of N63 latitude)

						L&M	
N1801	Sheet Metal Journeyman	44.93	8.30	10.34	1.32	0.25	65.14
	Metal lavatory partitions						
	Preparation of drawings taken from architectural and engineering plans required for fabrication and erection of sheet metal work						
	Sheet Metal shelving						
	Sheet Metal venting, chimneys and breaching						
	Skylight installation						

Sheet Metal Workers, Region II (South of N63 latitude)

						L&M	
S1801	Sheet Metal Journeyman	39.99	8.30	11.20	1.10	0.33	60.92
	Air Balancing and duct cleaning of HVAC systems						
	Brazing, soldering or welding of metals						
	Demolition of sheet metal HVAC systems						
	Fabrication and installation of exterior wall sheathing, siding, metal roofing, flashing, decking and architectural sheet metal work						
	Fabrication and installation of heating, ventilation and air conditioning ducts and equipment						
	Fabrication and installation of louvers and hoods						
	Fabrication and installation of sheet metal lagging						
	Fabrication and installation of stainless steel commercial or industrial food service equipment						
	Manufacture, fabrication assembly, installation and alteration of all ferrous and nonferrous metal work						
	Metal lavatory partitions						
	Preparation of drawings taken from architectural and engineering plans required for fabrication and erection of sheet metal work						
	Sheet Metal shelving						
	Sheet Metal venting, chimneys and breaching						
	Skylight installation						

Sprinkler Fitters

						L&M	
A1901	Sprinkler Fitter	42.89	8.52	13.05	0.45	0.25	65.16

Surveyors

**See note on last page if remote site

						L&M	
A2001	Chief of Parties	42.11	7.38	9.99	1.20	0.10	60.78
						L&M	
A2002	Party Chief	40.52	7.38	9.99	1.20	0.10	59.19

Wage benefits key: BHR=basic hourly rate; H&W=health and welfare; IAF=industry advancement fund; LEG=legal fund; L&M=labor/management fund; LML=labor/management fund & LEG combined; ONT=overnight; PEN=pension fund; SAF=safety; SUI=supplemental unemployment insurance; S&L=SUI & LEG combined; TRN=training; THR=total hourly rate; VAC=vacation

Class Code	Classification of Laborers & Mechanics	BHR	H&W	PEN	TRN	Other Benefits	THR
Surveyors							
**See note on last page if remote site							
						L&M	
A2003	Line & Grade Technician/Office Technician	39.92	7.38	9.99	1.20	0.10	58.59
						L&M	
A2004	Associate Party Chief (including Instrument Person & Head Chain Person)	37.80	7.38	9.99	1.20	0.10	56.47
						L&M	
A2005	Stake Hop/Grademan	34.87	7.38	9.99	1.20	0.10	53.54
						L&M	
A2006	Chain Person (for crews with more than 2 people)	33.46	7.38	9.99	1.20	0.10	52.13
Truck Drivers							
**See note on last page if remote site							
						L&M	
A2101	Group I, including: Air/Sea Traffic Controllers Ambulance/Fire Truck Driver (EMT certified) Boat Coxswain Captains & Pilots (air & water) Deltas, Commanders, Rollagons, & similar equipment (when pulling sleds, trailers or similar equipment) Dump Trucks (including rockbuggy & trucks with pups) over 40 yards up to & including 60 yards Helicopter Transporter Lowboys, including attached trailers & jeeps, up to & including 12 axles (over 12 axles or 150 tons to be negotiated) Material Coordinator and Purchasing Agent Ready-mix (over 12 yards up to & including 15 yards) (over 15 yards to be negotiated) Semi with Double Box Mixer Tireman, Heavy Duty/Fueler Water Wagon (250 Bbls and above)	38.89	7.38	9.99	1.20	0.10	57.56
						L&M	
A2102	Group 1A including: Dump Trucks (including rockbuggy & trucks with pups) over 60 yards up to & including 100 yards (over 100 yards to be negotiated) Jeeps (driver under load)	40.16	7.38	9.99	1.20	0.10	58.83
						L&M	
A2103	Group II, including: All Deltas, Commanders, Rollagons, & similar equipment Construction and Material Safety Technician Dump Trucks (including rockbuggy & trucks with pups) over 20 yards up to & including 40 yards Lowboys (including attached trailers & jeeps up to & including 8 axles) Mechanics Partsman	37.63	7.38	9.99	1.20	0.10	56.30

Wage benefits key: BHR=basic hourly rate; H&W=health and welfare; IAF=industry advancement fund; LEG=legal fund; L&M=labor/management fund; LML=labor/management fund & LEG combined; ONT=overnight; PEN=pension fund; SAF=safety; SUI=supplemental unemployment insurance; S&L=SUI & LEG combined; TRN=training; THR=total hourly rate; VAC=vacation

Class Code	Classification of Laborers & Mechanics	BHR	H&W	PEN	TRN	Other Benefits	THR
------------	--	-----	-----	-----	-----	----------------	-----

Truck Drivers

**See note on last page if remote site

						L&M	
A2103	Group II, including:	37.63	7.38	9.99	1.20	0.10	56.30
	Ready-mix (over 7 yards up to & including 12 yards)						
	Stringing Truck						
	Super Vac Truck/Cacasco Truck/Heat Stress Truck						
	Turn-O-Wagon or DW-10 (not self loading)						
A2104	Group III, including:	36.81	7.38	9.99	1.20	0.10	55.48
	Batch Trucks (8 yards & up)						
	Dump Trucks (including rockbuggy & trucks with pups) over 10 yards up to & including 20 yards						
	Expeditor (electrical & pipefitting materials)						
	Greaser - Shop						
	Oil Distributor Driver						
	Thermal Plastic Layout Technician						
	Traffic Control Technician						
	Trucks/Jeeps (push or pull)						
A2105	Group IV, including:	36.23	7.38	9.99	1.20	0.10	54.90
	Air Cushion or similar type vehicle						
	All Terrain Vehicle						
	Boom Truck/Knuckle Truck (over 5 tons)						
	Buggymobile						
	Bull Lift & Fork Lift, Fork Lift with Power Boom & Swing Attachment (over 5 tons)						
	Bus Operator (over 30 passengers)						
	Combination Truck-Fuel & Grease						
	Compactor (when pulled by rubber tired equipment)						
	Dump Trucks (including Rockbuggy & trucks with pups up to & including 10 yards)						
	Dumpster						
	Expeditor (general)						
	Fire Truck/Ambulance Driver						
	Flat Beds, Dual Rear Axle						
	Foam Distributor Truck Dual Axle						
	Front End Loader with Fork						
	Gin Pole Truck, Winch Truck, Wrecker (truck mounted "A" frame manufactured rating over 5 tons)						
	Grease Truck						
	Hydro Seeder, Dual Axle						
	Hyster Operators (handling bulk aggregate)						
	Loadmaster (air & water operations)						
	Lumber Carrier						
	Ready-mix, (up to & including 7 yards)						

Wage benefits key: BHR=basic hourly rate; H&W=health and welfare; IAF=industry advancement fund; LEG=legal fund; L&M=labor/management fund; LML=labor/management fund & LEG combined; ONT=overnight; PEN=pension fund; SAF=safety; SUI=supplemental unemployment insurance; S&L=SUI & LEG combined; TRN=training; THR=total hourly rate; VAC=vacation

Class Code	Classification of Laborers & Mechanics	BHR	H&W	PEN	TRN	Other	Benefits	THR
------------	--	-----	-----	-----	-----	-------	----------	-----

Truck Drivers

**See note on last page if remote site

						L&M	
A2105	Group IV, including:	36.23	7.38	9.99	1.20	0.10	54.90
	Rigger (air/water/oilfield)						
	Semi or Truck & Trailer						
	Tireman, Light Duty						
	Track Truck Equipment						
	Vacuum Truck, Truck Vacuum Sweeper						
	Warehouseperson						
	Water Truck, Dual Axle						
	Water Wagon, Semi						

						L&M	
A2106	Group V, including:	35.47	7.38	9.99	1.20	0.10	54.14
	Batch Truck (up to & including 7 yards)						
	Boom Truck/Knuckle Truck (up to & including 5 tons)						
	Buffer Truck						
	Bull Lifts & Fork Lifts, Fork Lifts with Power Boom & Swing Attachments (up to & including 5 tons)						
	Bus Operator (up to 30 passengers)						
	Farm Type Rubber Tired Tractor (when material handling or pulling wagons on a construction project)						
	Flat Beds, Single Rear Axle						
	Foam Distributor Truck Single Axle						
	Fuel Handler (station/bulk attendant)						
	Gear/Supply Truck						
	Gin Pole Truck, Winch Truck, Wrecker (truck mounted "A" frame manufactured rating 5 tons & under)						
	Gravel Spreader Box Operator on Truck						
	Hydro Seeders, Single axle						
	Pickups (pilot cars & all light-duty vehicles)						
	Rigger/Swamper						
	Tack Truck						
	Team Drivers (horses, mules, & similar equipment)						
	Water Truck (Below 250 Bbls)						

Tunnel Workers, Laborers (The Alaska areas north of N63 latitude and east of W138 longitude)

**See note on last page if remote site

						L&M	LEG
N2201	Group I, including:	32.18	7.24	13.73	1.20	0.20	0.15 54.70
	Brakeman						
	Mucker						
	Nipper						
	Topman & Bull Gang						
	Tunnel Track Laborer						

Wage benefits key: BHR=basic hourly rate; H&W=health and welfare; IAF=industry advancement fund; LEG=legal fund; L&M=labor/management fund; LML=labor/management fund & LEG combined; ONT=overnight; PEN=pension fund; SAF=safety; SUI=supplemental unemployment insurance; S&L=SUI & LEG combined; TRN=training; THR=total hourly rate; VAC=vacation

Class Code	Classification of Laborers & Mechanics	BHR	H&W	PEN	TRN	Other	Benefits	THR
---------------	--	-----	-----	-----	-----	-------	----------	-----

Tunnel Workers, Laborers (The Alaska areas north of N63 latitude and east of W138 longitude)

**See note on last page if remote site

						L&M	LEG	
N2202	Group II, including:	33.28	7.24	13.73	1.20	0.20	0.15	55.80
	Burning & Cutting Torch							
	Concrete Laborer							
	Jackhammer							
	Laser Instrument Operator							
	Nozzlemen, Pumpcrete or Shotcrete							
	Pipelayer Helper							
						L&M	LEG	
N2203	Group III, including:	34.27	7.24	13.73	1.20	0.20	0.15	56.79
	Miner							
	Retimberman							
						L&M	LEG	
N2204	Group IIIA, including:	37.87	7.24	13.73	1.20	0.20	0.15	60.39
	Asphalt Raker, Asphalt Belly Dump Lay Down							
	Drill Doctor (in the field)							
	Driller (including, but not limited to wagon drills, air-track drills, hydraulic drills)							
	Licensed Powderman							
	Pioneer Drilling & Drilling Off Tugger (all type drills)							
	Pipelayer							
						L&M	LEG	
N2206	Group IIIB, including:	38.79	7.24	13.73	1.20	0.20	0.15	61.31
	Federally Licensed Powderman (Responsible Person in Charge)							
	Grade Checking (setting or transferring of grade marks, line and grade)							

Tunnel Workers, Laborers (The area that is south of N63 latitude and west of W138 longitude)

**See note on last page if remote site

						L&M	LEG	
S2201	Group I, including:	32.18	7.24	13.73	1.20	0.20	0.15	54.70
	Brakeman							
	Mucker							
	Nipper							
	Topman & Bull Gang							
	Tunnel Track Laborer							
						L&M	LEG	
S2202	Group II, including:	33.28	7.24	13.73	1.20	0.20	0.15	55.80
	Burning & Cutting Torch							
	Concrete Laborer							
	Jackhammer							
	Laser Instrument Operator							
	Nozzlemen, Pumpcrete or Shotcrete							
	Pipelayer Helper							

Wage benefits key: BHR=basic hourly rate; H&W=health and welfare; IAF=industry advancement fund; LEG=legal fund; L&M=labor/management fund; LML=labor/management fund & LEG combined; ONT=overnight; PEN=pension fund; SAF=safety; SUI=supplemental unemployment insurance; S&L=SUI & LEG combined; TRN=training; THR=total hourly rate; VAC=vacation

Class Code	Classification of Laborers & Mechanics	BHR	H&W	PEN	TRN	Other	Benefits	THR
------------	--	-----	-----	-----	-----	-------	----------	-----

Tunnel Workers, Laborers (The area that is south of N63 latitude and west of W138 longitude)

**See note on last page if remote site

						L&M	LEG	
S2203	Group III, including:	34.27	7.24	13.73	1.20	0.20	0.15	56.79
	Miner							
	Retimberman							
S2204	Group IIIA, including:	37.87	7.24	13.73	1.20	0.20	0.15	60.39
	Asphalt Raker, Asphalt Belly Dump Lay Down							
	Drill Doctor (in the field)							
	Driller (including, but not limited to wagon drills, air-track drills, hydraulic drills)							
	Licensed Powderman							
	Pioneer Drilling & Drilling Off Tugger (all type drills)							
	Pipelayer							
S2206	Group IIIB, including:	38.79	7.24	13.73	1.20	0.20	0.15	61.31
	Federally Licensed Powderman (Responsible Person in Charge)							
	Grade Checking (setting or transferring of grade marks, line and grade)							

Tunnel Workers, Power Equipment Operators

**See note on last page if remote site


						L&M	
A2207	Group I	43.21	9.35	10.00	1.00	0.10	63.66
A2208	Group IA	45.14	9.35	10.00	1.00	0.10	65.59
A2209	Group II	42.36	9.35	10.00	1.00	0.10	62.81
A2210	Group III	41.57	9.35	10.00	1.00	0.10	62.02
A2211	Group IV	34.74	9.35	10.00	1.00	0.10	55.19

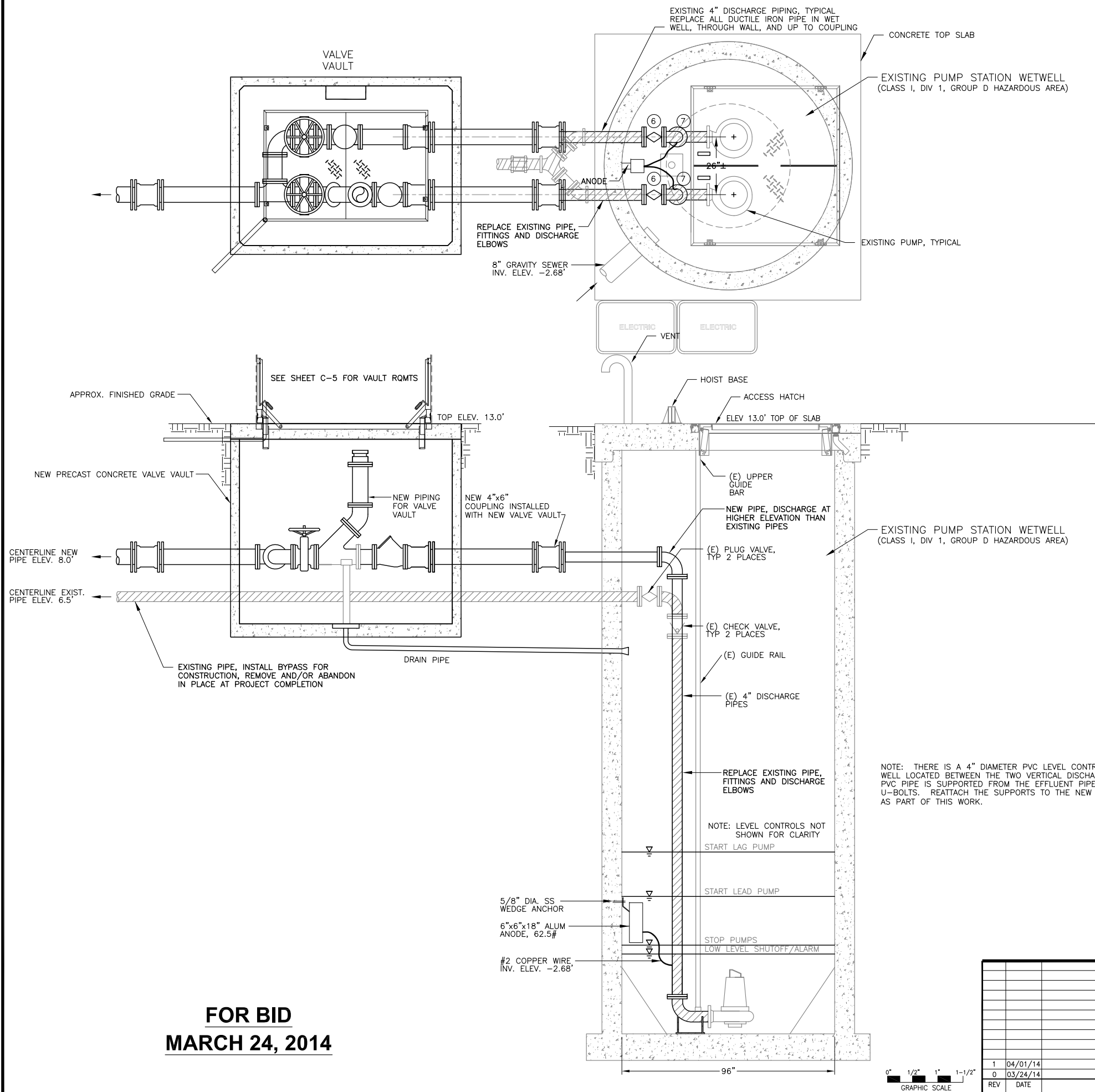
* A remote site is isolated and relatively distant from the amenities of civilization, and usually far from the employee's home. As a condition of employment, the workers must eat, sleep, and socialize at the worksite and remain there for extended periods.

** This classification must receive board and lodging under certain conditions. A per diem option of \$75 is an alternative to providing meals and lodging. See Page v for an explanation.

*** Work in combination of classifications: Employees working in any combination of classifications within the diving crew (working diver, standby diver, and tender) in a shift are paid in the classification with the highest rate for a minimum of 8 hours per shift.

Wage benefits key: BHR=basic hourly rate; H&W=health and welfare; IAF=industry advancement fund; LEG=legal fund; L&M=labor/management fund; LML=labor/management fund & LEG combined; ONT=overnight; PEN=pension fund; SAF=safety; SUI=supplemental unemployment insurance; S&L=SUI & LEG combined; TRN=training; THR=total hourly rate; VAC=vacation

 REGAN ENGINEERING, P.C.			
PROJECT:			
CITY OF UNALASKA SEWAGE LIFT STATION #3 FORCE MAIN MAIN REPLACEMENT - DELTA WAY STORM DRAIN			
TITLE:			
DETAILS - PUMP STATION UPGRADES & NEW VALVE VAULT			
DESIGNED BY:	TR	DATE: 03/24/14	SHEET NO:
CHECKED BY:	TR	DPW PROJECT NO: 11503-01	C-5 OF



GENERAL NOTES:

1. FIELD MEASUREMENT - THE ELEVATIONS PROVIDED ON THE DRAWINGS ARE FROM CH2MHILL AS-BUILT DRAWINGS PRODUCED IN 1989. THE CONTRACTOR SHALL FIELD VERIFY ALL DIMENSIONS AND ELEVATIONS PRIOR TO ORDERING MATERIALS.

INSTALLATION NOTES:

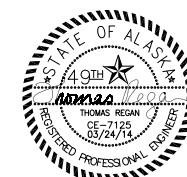
1. ALL MISCELLANEOUS NUTS, BOLTS, HARDWARE AND METALS IN THE WET WELL AND VALVE VAULT THAT ARE NOT IDENTIFIED OTHERWISE SHALL BE STAINLESS STEEL.

WET WELL UPGRADE REQUIREMENTS:

1. THE EXISTING PIPING IN THE WET WELL HAS BEEN NOTED TO BE CORRODED AND IN NEED OF REPLACEMENT. THE INTENT OF THIS WORK IS TO REPLACE THE DISCHARGE ELBOWS AND THE DUCTILE IRON PIPE & FITTINGS BETWEEN THE PUMPS AND THE EXTERIOR 4x6 COUPLINGS INSTALLED AS PART OF THE VALVE VAULT CONSTRUCTION.
2. ALL MISCELLANEOUS NUTS, BOLTS, METALS AND HARDWARE INSTALLED IN THE WET WELL THAT ARE NOT IDENTIFIED OTHERWISE SHALL BE STAINLESS STEEL.
3. ALL PIPE SHALL BE MINIMUM CLASS 52 DUCTILE IRON MEETING REQUIREMENTS OF ANSI/AWWA C110/A21.10. FITTINGS SHALL BE FLANGED AND SHALL BE FACED AND DRILLED IN ACCORDANCE WITH ANSI CLASS 125 B16.1. ALL DUCTILE IRON FITTINGS SHALL BE RATED FOR WATER PRESSURE OF 250 PSI. PIPE AND FITTINGS SHALL BE CEMENT LINED AND SEAL COATED IN ACCORDANCE WITH ANIS/AWWA C104/A21.4
4. AN ANODE SHALL BE INSTALLED WITH LEADS TO EACH PIPE RISER. THE ANODE SHALL BE CONNECTED TO THE RISERS WITH CADWELDED NUMBER 2 BRAIDED COPPER WIRES. ANODE TO BE MINIMUM 30 POUND ALUMINUM WITH A MINIMUM 4-AMPERE YEAR RATING. MOUNT TO TO WALL USING A MIN. 5/8" DIAMETER STAINLESS STEEL WEDGE ANCHOR THROUGH STEEL TAB. REPAIR CADWELD LOCATIONS ON PIPES WITH COAL TAR EPOXY COATING.
5. REINSTALL STILLING WELL SUPPORTS TO NEW PIPE.

FOR BID
MARCH 24, 2014

1	04/01/14	ADDENDUM 1
0	03/24/14	FOR PERMITTING
REV	DATE	DESCRIPTION



PROJECT:	CITY OF UNALASKA		
	SEWAGE LIFT STATION #3 FORCE MAIN MAIN REPLACEMENT - DELTA WAY STORM DRAIN		
TITLE:	DETAILS - PUMP STATION WETWELL PIPING REPLACEMENT		
DESIGNED BY:	TR	DATE:	03/24/14
CHECKED BY:	TR	DPW PROJECT NO:	11503-01
			SHEET NO: C-5A of 10