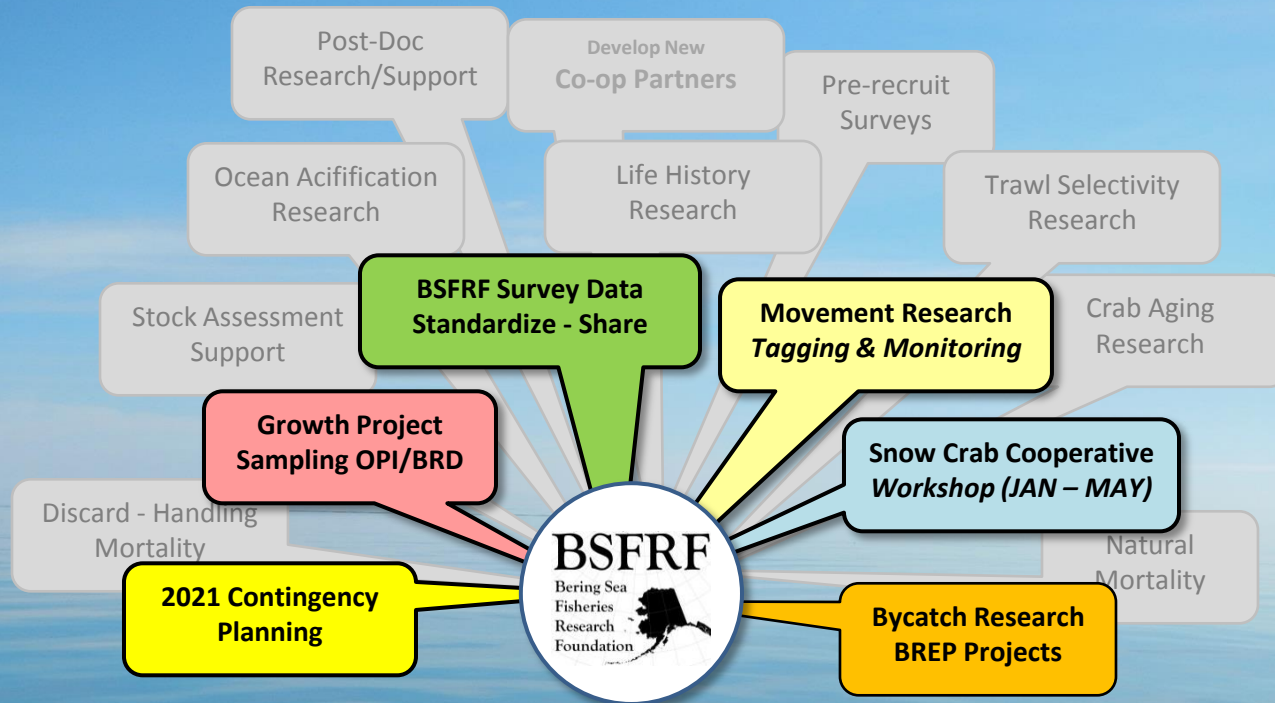


# BSFRF Research Update - 2021

Scott Goodman | Executive Director  
CPT September | 01.12.21



# BSFRF Research



*Who We Are...*





# Growth Studies – Sampling Update



2020 Sampling Cancelled





# Growth Studies – Sampling Update

## Bering Sea Sampling History

- 2011 Opilio Focus
- 2012 Opilio Focus
- 2013 Opi/Bairdi Focus
- 2015 Opilio Focus
- 2017 Opi/Bairdi Focus
- 2019 Opi/Bairdi Focus
- 2020 Cancelled
- 2021 Opi Focus – Earlier?  
Planning is underway...

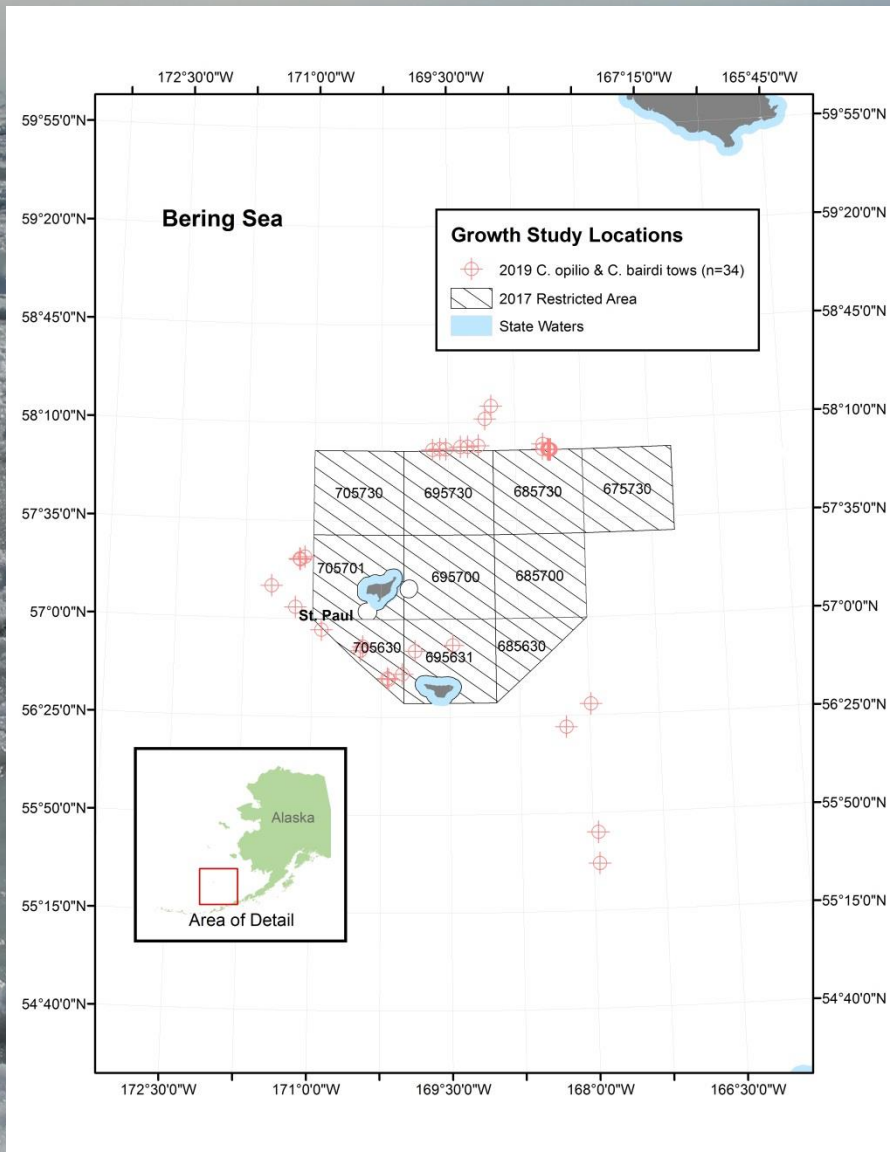
## Review - April 2019 Sampling

- *F/V Half Moon Bay*
- Nephrops trawl <4 m/tow
- 6 days total, 4/7-4/12
- 464 study crab retained
- Brd 113/132, Opi 100/119
- Special boat ride to KOD
- <50 at sea mortalities
- 4/17 @ KOD – crab condos
- Fill gaps / increase samples

“get stuff done in 2021”



# Growth Studies – Sampling Update



Highlight ability to combine objectives  
“Adding Projects”

- 1) OPI growth data
- 2) BRD growth data
- 3) OPI condition samples
- 4) OPI black eye samples
- 5) OPI <10 mm OA samples
- 6) Pollock juv. tissue samples

**FOR 2021, Coordinate w/  
Cody & Buck, NMFS/ADFG  
Kodiak, Sample Options?**

# Movement Research – Tagging Crabs

- New Approach – Tags R&D, Acoustics /Focused Project
  - Focusing on acoustic tech for maximizing “recovery”
  - Overcoming challenges of low recovery
  - Leveraging existing resources and tech
  - Coordinate/compare to satellite tags





# Movement Research – 2021 Options

- Options for summer charter for tagging focus are underway – but may be coordinated with other efforts
- Research may include crab survey project work, with specifics TBD
- Working closely with NMFS surveys
- Collaborations with ADFG for new options
- Reaching out to cooperative partners FEBRUARY



“get stuff done in 2021”

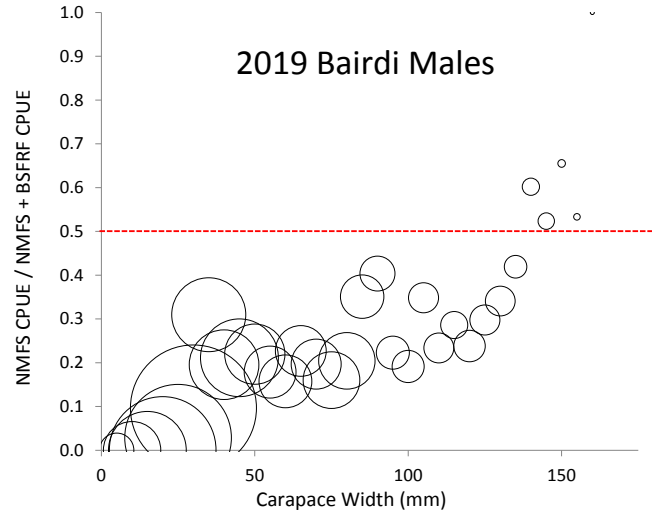
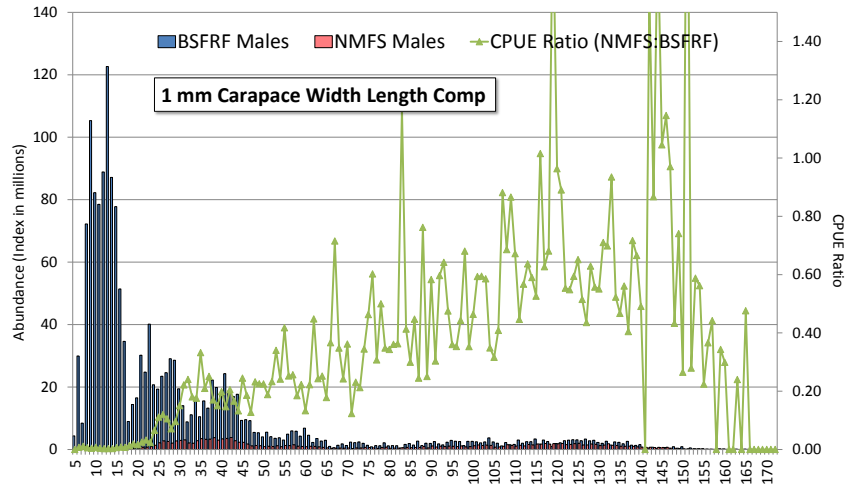


# BSFRF Crab Survey Info

- Compiling BSFRF survey data into consistent format
- Providing updates/access to research partners
  - Bairdi survey data – Buck Stockhausen
  - Opilio survey data – Cody Szuwalski
  - BBRKC survey data – Bob McConnaughey
  - Open to other inquiries...
- What are we working on?
  - cleaning up bairdi data -> recent SBS 2018
  - minor corrections to opilio data -> 2016-2018
  - simplified recalculation for RKC area swept, reviewing small relative changes...



# BSFRF Crab Survey Info



High Priority  
Focused on completing these tasks asap

“get stuff done in 2021”



# BREP PROJECT UPDATE

*Testing Pot Gear Modifications to  
Reduce Crab Bycatch in Cod and Halibut Fisheries*

**LAB RESULTS & FIELD WORK**

*Jan 2021*

- *Submitted for inclusion in NPFMC Executive Director written report for FEB*

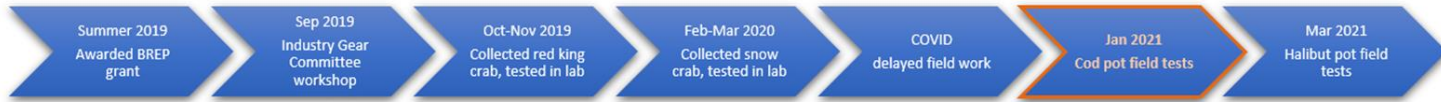




Bering Sea Pot Cod Cooperative



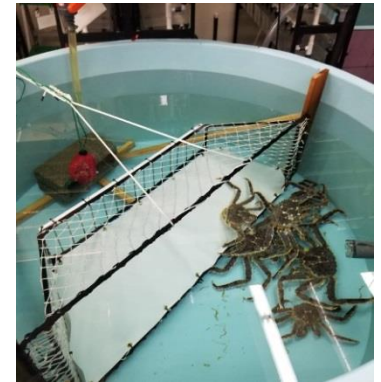
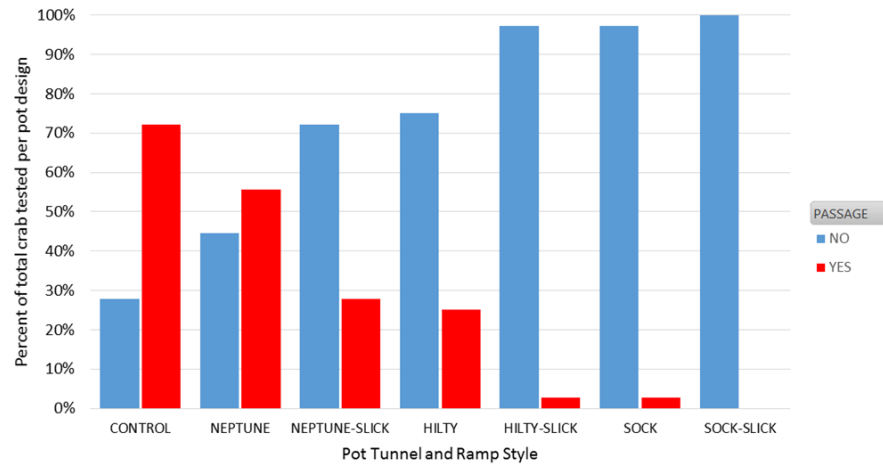
### BREP Grant 1



### BREP Grant 2

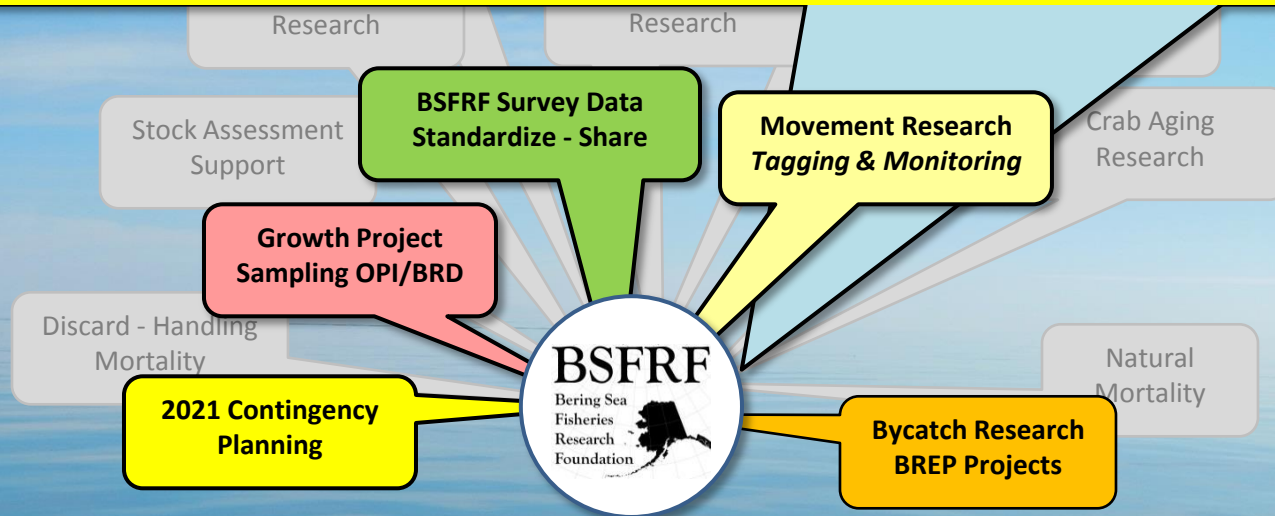


Red King Crab -- Cod pot testing (lab)



# BSFRF Research

# SNOW CRAB WORKSHOP



Who We Are...

Harvesters - Processors



Cooperative Research Partners





# Collaborative Snow Crab Workshop

---

BERING SEA FISHERIES RESEARCH FOUNDATION  
ALASKA DEPARTMENT OF FISH & GAME  
NATIONAL MARINE FISHERIES SERVICE

**JANUARY 21 – 22, 2021**

Virtual Workshop via ZOOM (Info Below)  
Agenda & Materials Attached

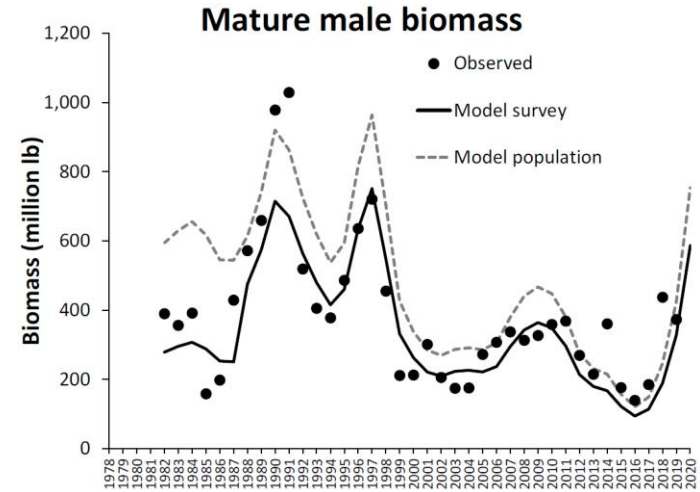
---

## Goals

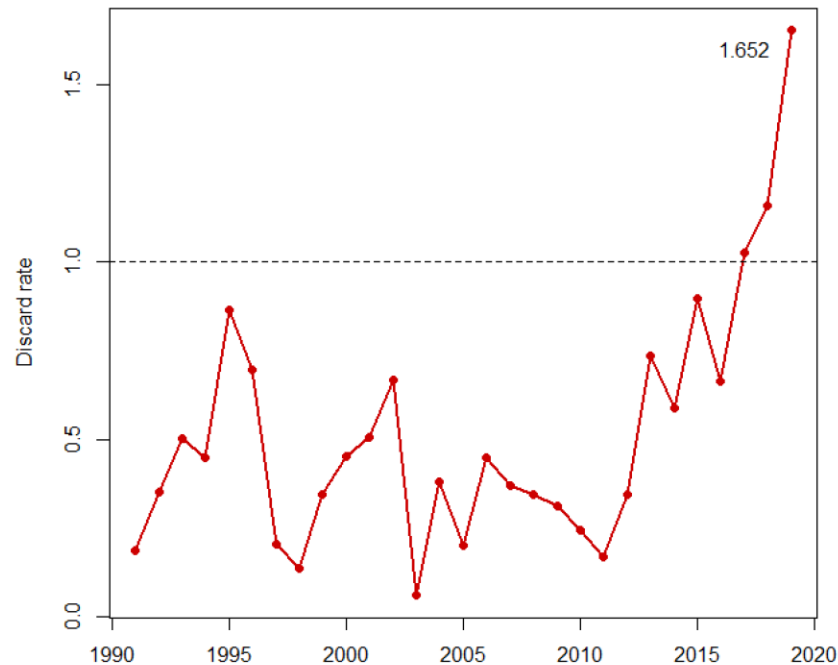
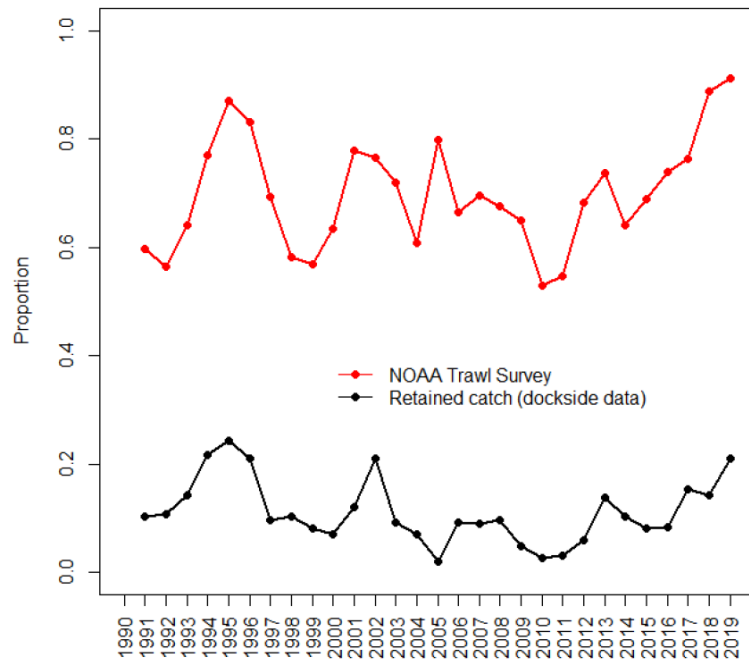
1. Consider population-level implications of a reduced male size at maturity.
2. Consider causes and effects of the high discarding rates seen in recent years in the fishery.
3. Refine eastern Bering Sea snow crab research priorities in the context of specific management improvements and recommendations.

# Collaborative Snow Crab Workshop

- Why are we looking?
- What's going on?



Proportion sub-industry-preferred legal males



Based on abundance of legal (+3.1 inches) male crab

High discarding sub-industry preferred legal crab



# Collaborative Snow Crab Workshop

- Review available information from research perspective (maturity, growth, etc., available data)
- Identify options for further research and next workshop steps (two workshops planned now)
- Won't try to answer too much (planning smaller steps first, won't try to address or answer all questions)
- Intended to build on Bairdi Workshop methods and outcomes as a pattern for successful collaboration -> this began in DEC 2017, led to MSE (UW Masters) project, extensive sharing w/ stakeholders, and was adopted into management MAR 2020

# Collaborative Snow Crab Workshop

- Steering Committee; BSFRF, ADFG, and NOAA
- Via ZOOM, chaired by BSFRF w/ co-hosts
- Open to snow crab researchers and managers
- CPT and similar peers are welcome
- Stakeholder input is planned – research focused
- Plans include 4 presenters; 2 from AK (Cody & Ben) and 2 from Canada (St.-Marie & Mallowney)
- There are some sensitive parts of this workshop – we'll stay focused on biological research (10p info)
- Please confirm with Scott Goodman your plans to attend and if you have questions (by email)



# BSFRF Outlook & Focus

- Seeking input on other research options
  - Broadening scope of projects
  - Coordinating w/ CPT and public this week
  - Board of Directors meets monthly, plans annually
  - Flexible to new opportunities...
- 
- CONTINGENCY PLANNING...

# BSFRF Research Update - 2021

Scott Goodman | Executive Director  
CPT Seattle | 01.12.21

