

# U.S. Commercial Fisheries and the Seafood Industry

## Landings and Values, 2019

### National Totals



**9.3**  
billion pounds  
-1% from 2018

**\$5.5**  
billion  
-2.0% from 2018

### Highest Value Species Groups\*



**SALMON**  
\$707 million



**LOBSTER**  
\$668 million



**CRABS**  
\$636 million



**SCALLOPS**  
\$572 million



**SHRIMP**  
\$467 million

### Regional Totals\*\*

#### PACIFIC

**11%**  
of landings

**12%**  
of value

#### ALASKA

**60%**  
of landings

**32%**  
of value

#### GULF OF MEXICO

**15%**  
of landings

**15%**  
of value

#### ATLANTIC

**13%**  
of landings

**39%**  
of value

\* Ex-vessel value

\*\* Hawaii contributed less than 1% of U.S. volume and 2% of U.S. landings value. The Great Lakes contributed less than 1% of U.S. landings and landings value.



**NOAA**  
FISHERIES

# Top Ports by Volume and Value of Seafood Landed, 2019

## Dutch Harbor, AK

1<sup>st</sup> 763 million pounds  
3<sup>rd</sup> \$190 million

Highest Volume

23<sup>rd</sup>  
Consecutive Year

Highest Value

20<sup>th</sup>  
Consecutive Year

AK

## Kodiak, AK

3<sup>rd</sup> 397 million pounds  
6<sup>th</sup> \$120 million

## Aleutian Islands (Other), AK

2<sup>nd</sup> 589 million pounds  
4<sup>th</sup> \$142 million

## New Bedford, MA

14<sup>th</sup> 116 million pounds  
1<sup>st</sup> \$451 million

MA

## Astoria, OR

10<sup>th</sup> 171 million pounds  
25<sup>th</sup> \$44 million

OR

## Reedville, VA

4<sup>th</sup> 365 million pounds  
27<sup>th</sup> \$37 million

VA

## Honolulu, HI

23<sup>rd</sup> 29 million pounds  
9<sup>th</sup> \$90 million

HI

## Empire-Venice, LA

7<sup>th</sup> 209 million pounds  
10<sup>th</sup> \$79 million

LA

## Intracoastal City, LA

6<sup>th</sup> 234 million pounds  
47<sup>th</sup> \$22 million

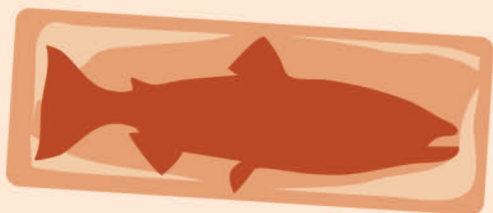


# U.S. Commercial Fisheries and the Seafood Industry

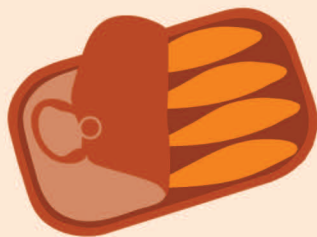
## How Our Catch is Used, 2019

### Human Food

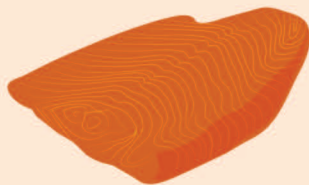
**78%**  
Fresh/Frozen



**<2%**  
Canned

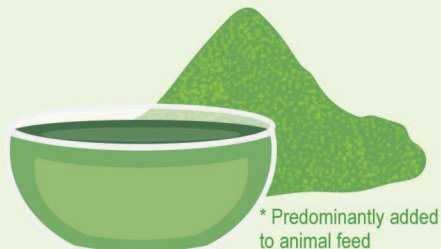


**<2%**  
Cured



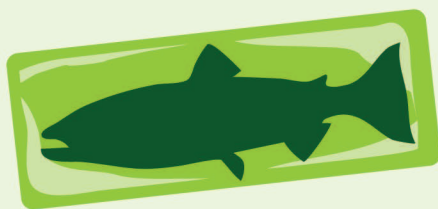
### Other Uses

**17%**  
Fish Meal and Oil\*



\* Predominantly added to animal feed

**2%**  
Fresh/Frozen Bait and Animal Food



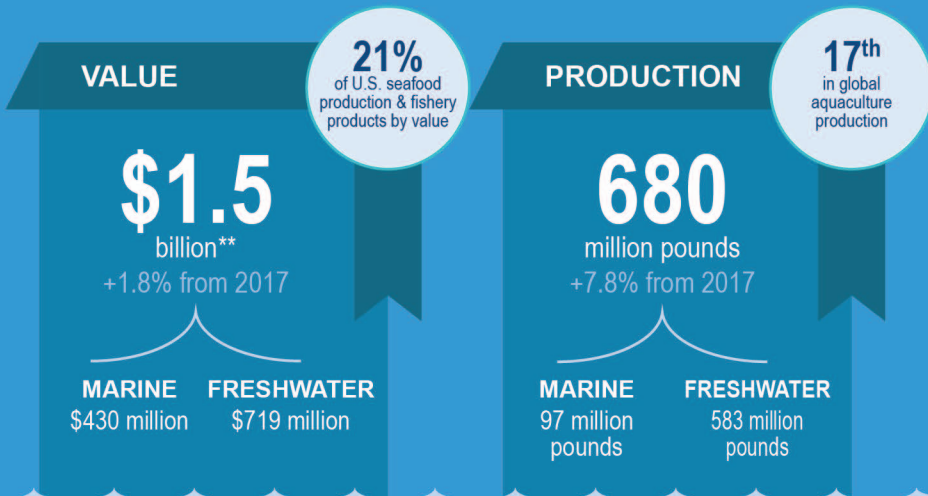
**<1%**  
Canned Animal Food



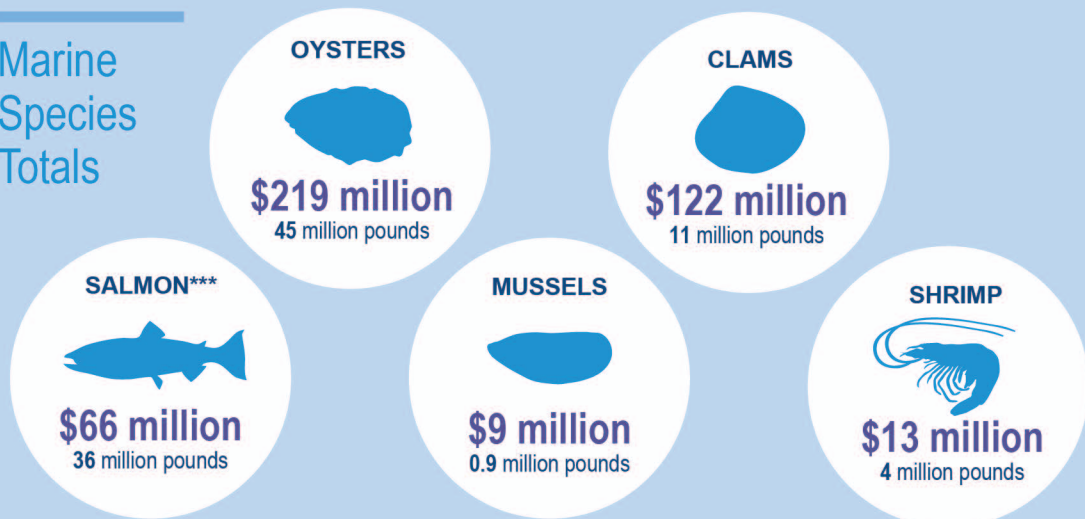
**NOAA**  
FISHERIES

# Aquaculture Production **Highlights, 2018\***

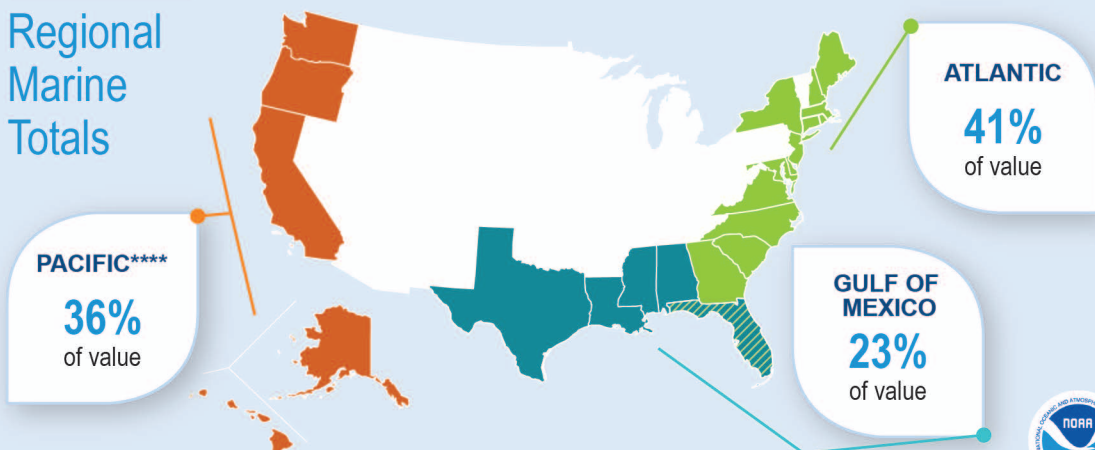
## Marine and Freshwater National Totals



## Marine Species Totals



## Regional Marine Totals



\* Data are from state agencies, industry groups, and the United States Department of Agriculture (USDA). Global data are from the FAO.

\*\* Figure includes value of misc. aquaculture items (e.g. ornamental fish, algae, etc.). Marine and freshwater values will not add to \$1.5 billion.

\*\*\* Estimated

\*\*\*\* Alaska and Hawaii are included in the Pacific region for aquaculture production.



**NOAA**  
FISHERIES

# U.S. Recreational Fisheries

## Saltwater Trips and Catch, 2019

### National Totals



**187**  
million fishing trips

**950**  
million fish caught  
64% released alive

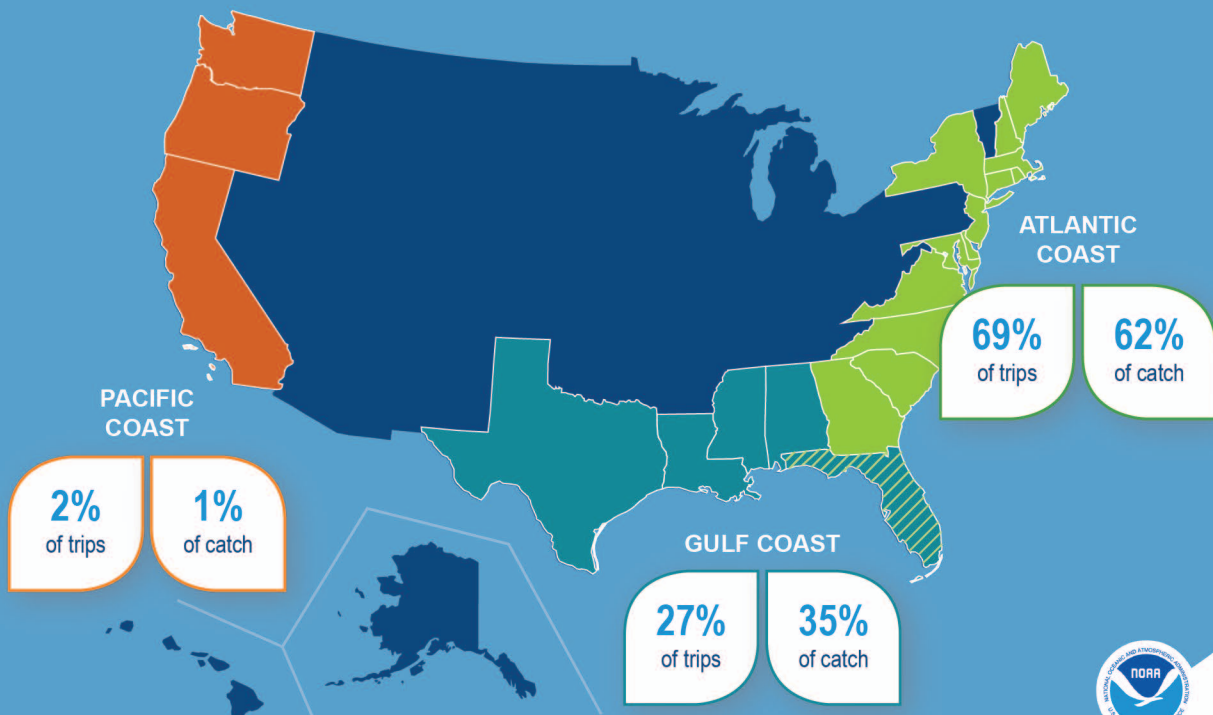
### WHERE OUR CATCH COMES FROM\*

**54%**  
Estuaries / Inland waters

**36%**  
State territorial seas

**9%**  
Federal waters  
(Exclusive Economic Zone)

### Regional Totals\*\*



\* Numbers of fish.

\*\* Alaska data not available for 2019. Hawaii contributed 2% and 1% of national trips and catch, respectively. Data from the east coast of Florida are included in the Atlantic, while Florida west coast data are included in the Gulf Coast. Puerto Rico data are not available for 2019.



**NOAA**  
FISHERIES

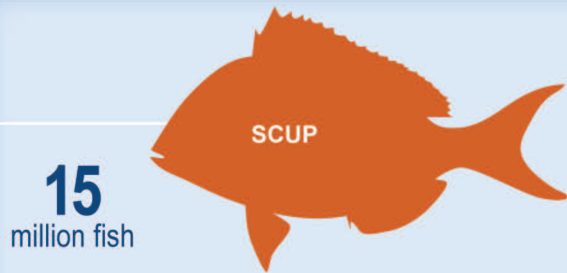
# U.S. Recreational Fisheries

## Top Species by Numbers of Fish\*, 2019

### Total Catch (Harvested + Released)



### Harvested



\* Fish counts do not include fish caught for bait.  
Alaska data are not available for 2019.

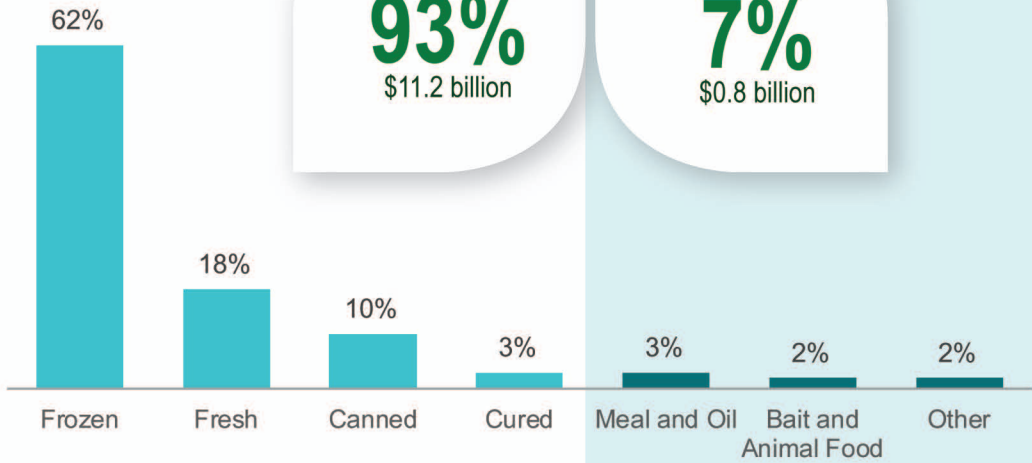


**NOAA**  
FISHERIES

# Value of Processed Fisheries Products, 2019\*

(Processed from domestic catch and imported products)

## Percent Value by Type



EDIBLE PRODUCTS  
**93%**  
\$11.2 billion

INDUSTRIAL PRODUCTS  
**7%**  
\$0.8 billion

## Top Species Processed



**SOCKEYE SALMON**



**\$1.03 billion**  
211 million pounds

**SHRIMP**



**\$966 million**  
301 million pounds

**TUNA**



**\$868 million**  
424 million pounds

**SEA SCALLOPS**



**\$746 million**  
140 million pounds

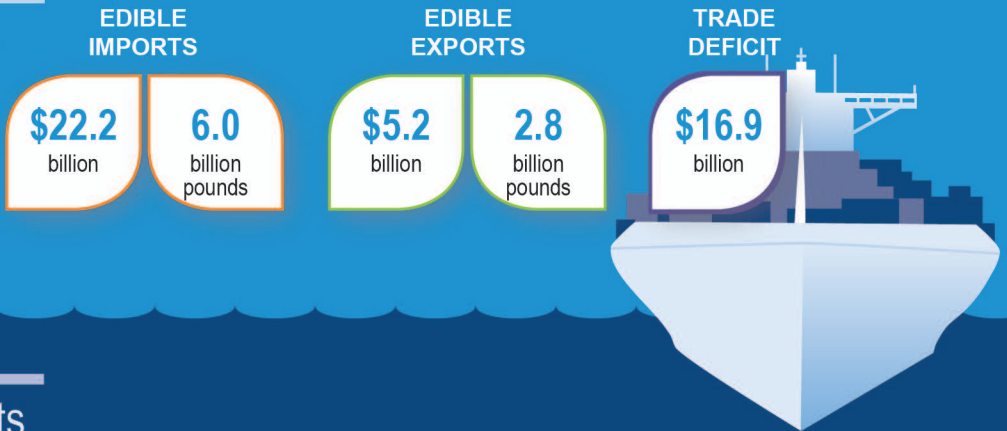


**NOAA FISHERIES**

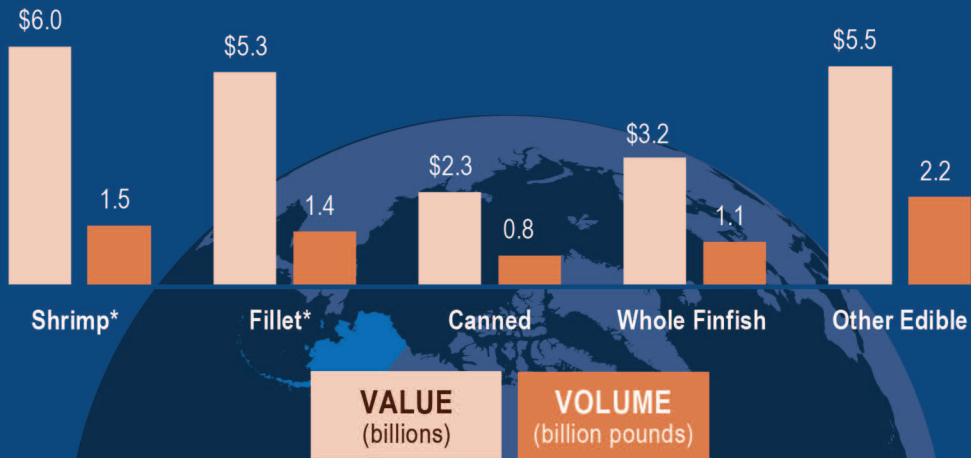
\* Free on Board (FOB) value of processed products.

# U.S. Seafood Trade, 2019

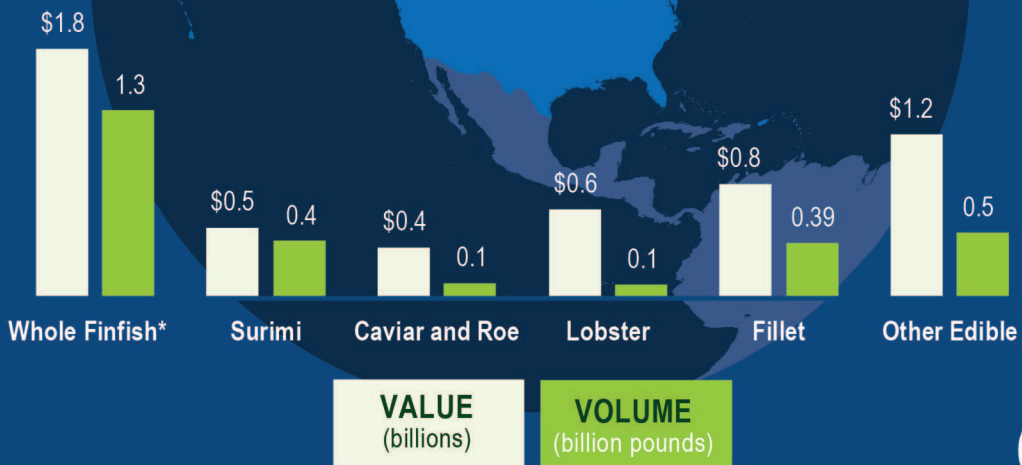
## Totals



## Imports



## Exports



\* Includes both fresh and frozen product.

